

Calkins

TRASHMASTER

**PARTS ILLUSTRATION &
ASSEMBLY INSTRUCTIONS**

J.E. LOVE COMPANY

LOVE®

309 W. CALIFORNIA STREET
P.O. BOX 188
GARFIELD, WASHINGTON 99130-0188
(509) 635-1321 FAX: (509) 635-1434
www.jeloveco.com

Revised 06/19/07 MRD
Revised 12/2010 JLL

CAUTION

BLOCK SECURELY

Do not place yourself under any equipment suspended hydraulically, with mechanical stops, jacks or hoists, without blocking securely.

Make sure machine cannot roll.

Table of Contents

Title	Page
Caution/warning -----	1
Table of Contents -----	2
Trashmaster, Model 1105-410 Manual lift -----	3A, 3B
Manual lift Sprocket & Transport lift Assembly -----	4A, 4B
Manual lift handle Assembly -----	4C
Trashmaster, Model 1105-510 Hydraulic lift -----	5A, 5B
Hydraulic lift components Frame members -----	6, 7
Boot drive components -----	8, 9
Boot bottom Assembly -----	10
Idler sprocket assemblies -----	11
Power idler pully -----	12
Frame members, Gooseneck, Weeder Rod & Square axle -----	13, 14
Shoe assemblies, Standard and rock -----	15
Cleated wheel, Tiller wheel, & Ratchet gear -----	16, 17
Hub ratchet gear & Cleated wheel assembly -----	18
Concaved Tiller wheel assembly -----	19
Part number page reference -----	I-IV

Trashmaster Model 1105-410, Manual lift

FRONT IDLER SPROCKET

REAR IDLER SPROCKET

SPLIT DRIVE SPROCKET

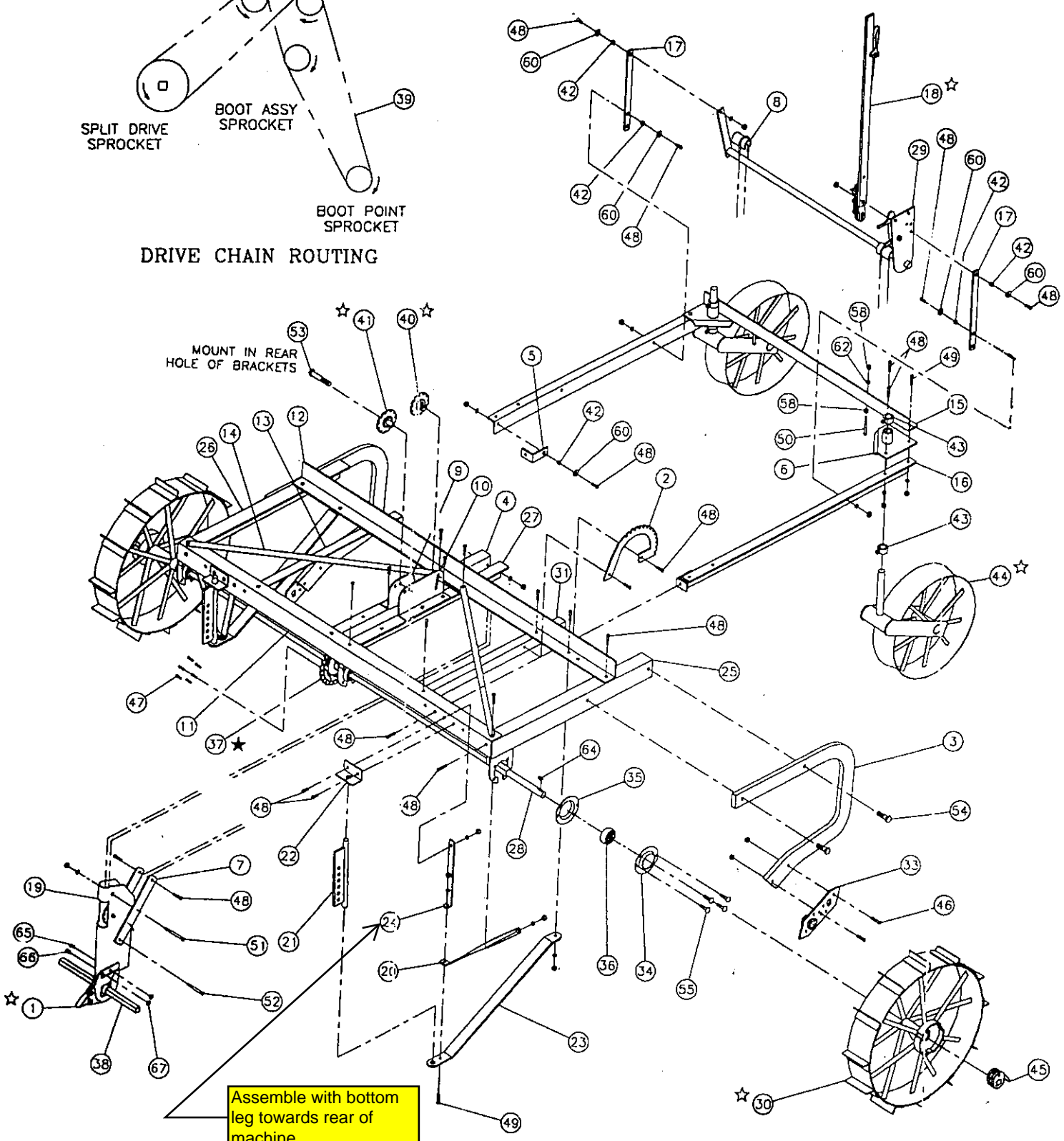
BOOT ASSY SPROCKET

BOOT POINT SPROCKET

DRIVE CHAIN ROUTING

MOUNT IN REAR HOLE OF BRACKETS

Assemble with bottom leg towards rear of machine.



Trashmaster Model 1105-410, Manual lift

REF. No.	PART NUMBER	DESCRIPTION	QTY.
1	103-515	1" STD BOOT BOTTOM ASSY	1
	103-516	1" ROCK BOOT BOTTOM ASSY	1
2	104-008	MANUAL LIFT SPROCKET	1
3	104-013	GOOSENECK (16" CENTER HOLES)	2
4	104-014	BOOT CROSSMEMBER RH	1
5	104-019	TRANSPORT PIVOT BRACKET	2
6	104-022	CASTER WHEEL BEARING	2
7	104-025	BOOT BRACE STRAP	2
8	104-027	TRANSPORT LIFT BEARING	2
9	104-032	IDLER SPROCKET BRACKET RH	1
10	104-033	IDLER SPROCKET BRACKET LH	1
11	104-041	FRONT FRAME MEMBER	1
12	104-042	REAR FRAME MEMBER	1
13	104-043	LIFT SUPPORT FRAME MEMBER RH	1
14	104-045	DIAGONAL BRACE	2
15	104-046	REAR TRANSPORT MEMBER	1
16	104-048	TRANSPORT LEAD BAR	2
17	104-049	TRANSPORT LIFT STRAP	2
18	104-054	HANDLE ASSEMBLY	1
19	104-081	BOOT BODY ASSY	1
20	104-102	BRACE DEPTH HITCH	2
21	104-109	DEPTH HITCH	2
22	104-110	BRACKET, DEPTH HITCH	2
23	104-111	BRACKET, DEPTH HITCH PULL	2
24	104-113	DEPTH HITCH SUPPORT	2
25	104-167	END CROSSMEMBER LH	1
26	104-168	END CROSSMEMBER RH	1
27	104-169	BOOT CROSSMEMBER LH	1
28	104-170	SQUARE AXLE	1
29	104-550	TRANSPORT LIFT ASSY	1
30	104-555	CLEATED 30" WHEEL ASSY	2
31	104-820	LIFT SUPPORT FRAME MEMBER LH	1
32	105-098	1" STANDARD SHOE ASSEMBLY	1
33	105-101	1" LOCKING STANDARD SHOE ASSEMBLY	1
34	5-499-010	BEARING FLANGE WITH ZERK	3
35	5-499-011	BEARING FLANGE	3
36	5-449-031	BEARING	3
37	5-919-698	SPROCKET SPLIT DRIVE HI-CHROME	1
38	5-966-110	WEEDER ROD 1" X 10' 6"	1
39	6-016-005	CHAIN ASSY, 2050 107 LINK	1
40	6-449-002	IDLER SPROCKET ASSY REAR	1
41	6-449-030	IDLER SPROCKET ASSY FRONT	1
42	6-133-007	BUSHING	6
43	6-486-001	SET COLLAR, 1-1/4" ROUND	4
44	6-639-002	CONCAVED 22" WHEEL ASSY	2
45	6-919-347	HUB RATCHET GEAR ASSY W-146 & 147	2
46	7-112-017	CAP SCREW, 7/16" NC X 2"	4
47	7-112-050	CAP SCREW, 3/8" NC X 1"	6
48	7-113-102	CAP SCREW, 1/2" NC X 1-1/2"	29
49	7-113-110	CAP SCREW, 1/2" NC X 2"	14
50	7-113-120	CAP SCREW, 1/2" NC X 3-1/2"	2
51	7-113-022	CAP SCREW, 1/2" NC X 4"	1
52	7-113-022	CAP SCREW, 1/2" NC X 4"	1
53	7-114-045	CAP SCREW, 5/8" NC X 4-1/2"	1
54	7-114-110	CAP SCREW, 5/8" NC X 2-1/4"	4
55	7-343-003	CARRIAGE BOLT, 1/2" NC X 1-1/4"	12
56	7-722-010	HEX NUT, 3/8" NC	6
57	7-722-015	HEX NUT, 7/16" NC	4
58	7-723-015	HEX NUT, 1/2" NC	65
59	7-724-005	HEX NUT, 5/8" NC	5
60	7-813-015	FLAT WASHER, 1/2"	6
61	7-842-010	LOCK WASHER, 3/8"	6
62	7-843-015	LOCK WASHER, 1/2"	63
63	7-844-020	LOCK WASHER, 5/8"	5
64	7-932-114	SQ KEY 3/8" x 1-1/4"	2
65	8-113-002	CAP SCREW, 1/2 NC X 1-1/2" TAPERED HEAD	1
66	8-113-003	CAP SCREW, 1/2 NC X 1-1/4" TAPERED HEAD	1
67	8-723-001	HEX NUT, 1/2 NC TAPERED	2

NOTE:

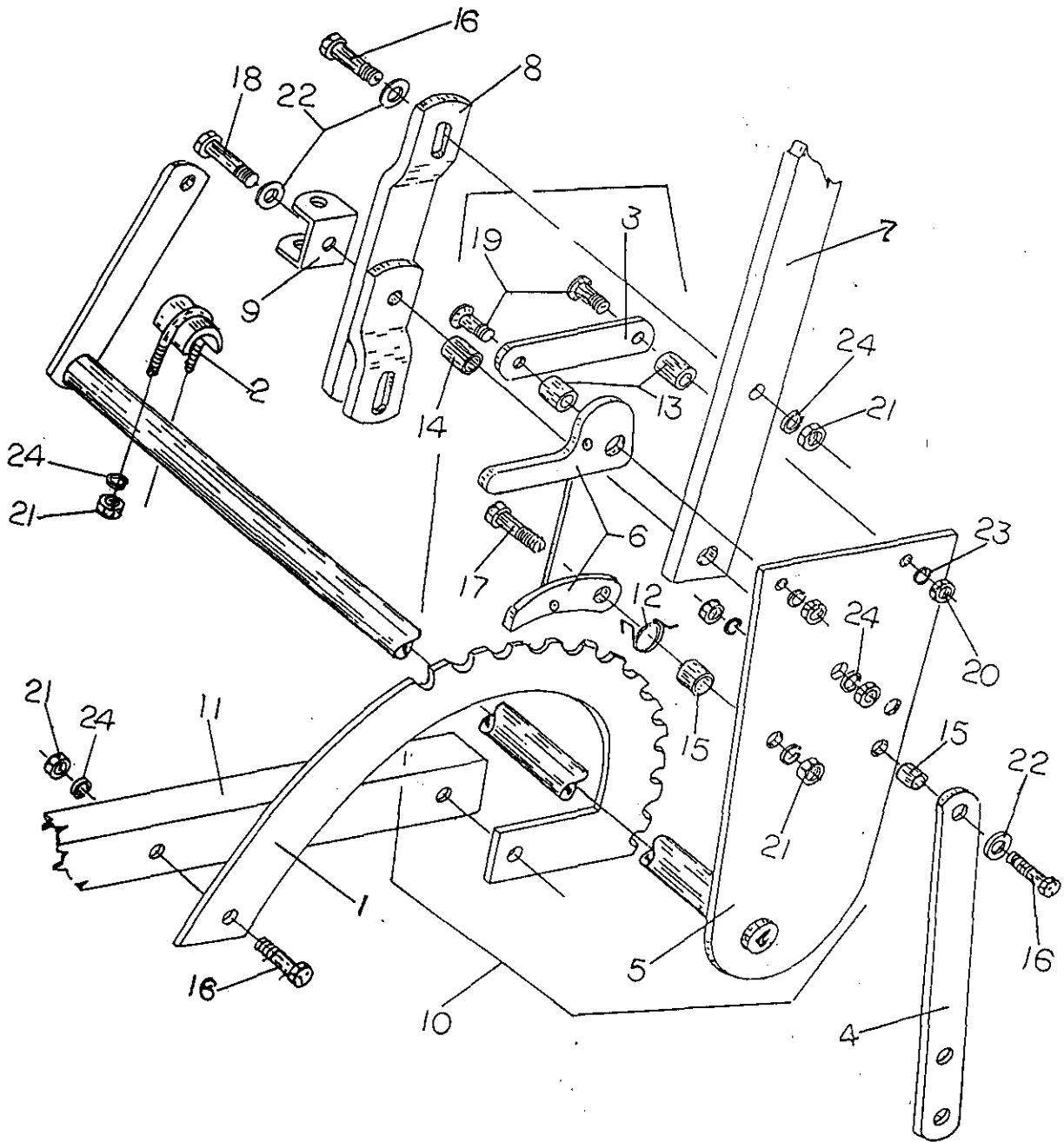
USE 1/2" x 1-1/2" CAP SCREWS WHEN JOINING TWO FRAME MEMBERS.
 USE 1/2" x 2" CAP SCREWS WHEN JOINING THREE FRAME MEMBERS.

ONE LOCK WASHER AND HEX NUT OF CORRECT SIZE TO
 BE USED WITH EACH CAP SCREW UNLESS OTHERWISE NOTED.

☆ SEE DETAIL ON SEPARATE PAGE.

★ INSTALL BEARING ON RIGHT HAND SIDE OF FRAME MEMBER.

Manual lift Sprocket & Transport lift assembly

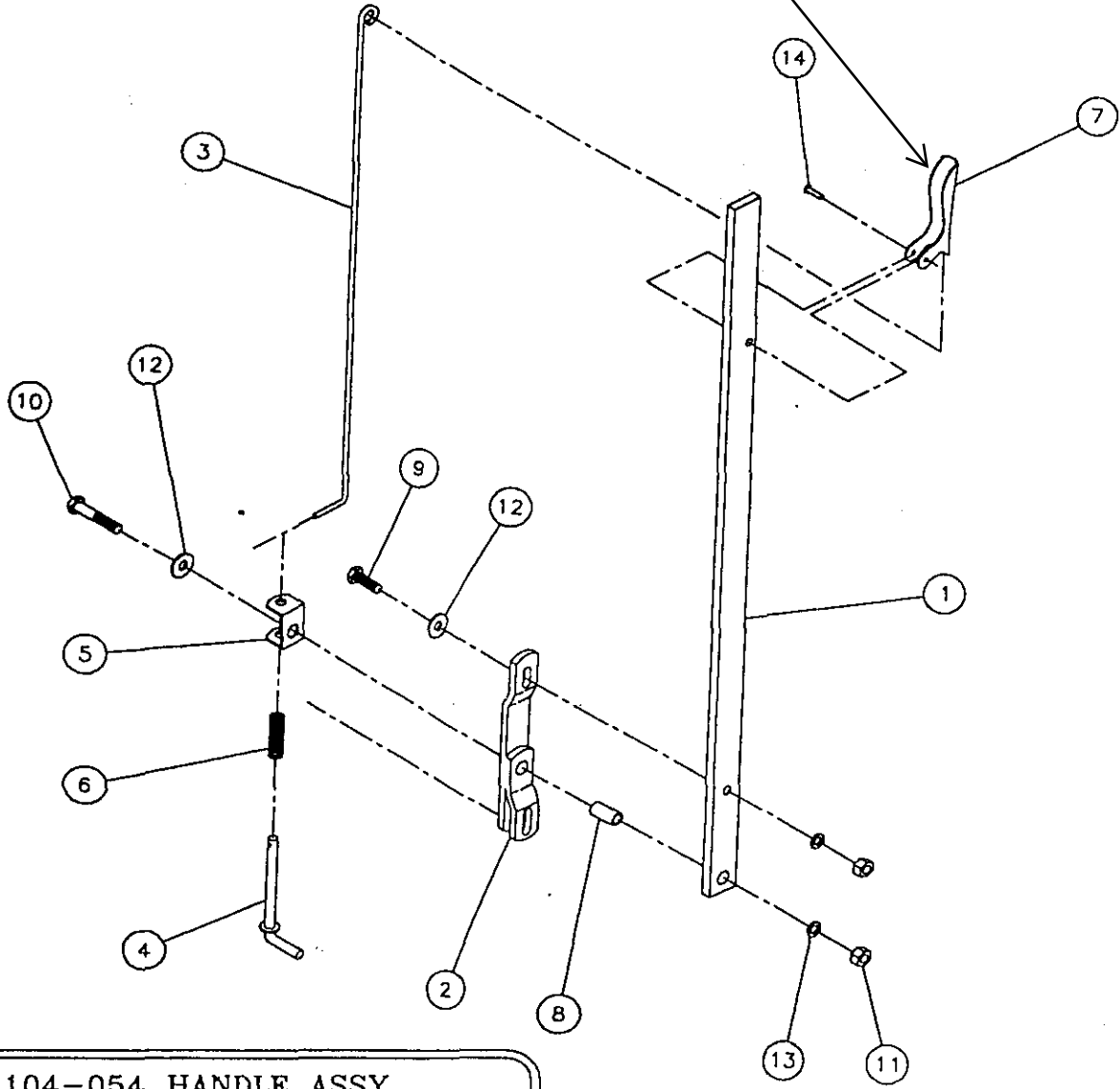


Manual lift Sprocket & Transport lift assembly

Key	Part No.	Description
1	0104-008	Manual lift sprocket
2	0104-027	Transport lift bearing
3	0104-028	Strap guide lever
4	0104-049	Transport lift strap
5	0104-050	Shaft transport lift
6	0104-052	Pawl & Lock lever handle
7	0104-053	Handle
8	0104-055	Linkage guide
9	0104-058	Spring tension bracket
10	0104-550	Transport lift assembly
11	0104-820	Lift support frame member, LH
12	5129-002	Torsion spring
13	6132-002	Bushing, 0.54" OD x 0.391" ID x 0.531"
14	6132-004	Bushing, 0.75" OD x 0.51" ID x 1.438"
15	6133-007	Bushing, 0.75" OD x 0.51" ID x 0.438"
16	7113-102	Cap screw, 1/2"NC x 1-1/2"
17	7113-103	Cap screw, 1/2"NC x 1-3/4"
18	7113-113	Cap screw, 1/2"NC x 2-3/4"
19	7142-052	Socket screw, 3/8"NC x 1-1/2", Flathead
20	7722-010	Hex nut, 3/8"NC
21	7723-015	Hex nut, 1/2"NC
22	7813-015	Flat washer, 1/2"
23	7842-010	Lock washer, 3/8"
24	7843-015	Lock washer, 1/2"

Calkins TRASHMASTER

Release lever may be placed in a forward position for easier operation



104-054 HANDLE ASSY

REF No.	PART No.	DESCRIPTION	QTY
1	104-053	HANDLE	1
2	104-055	LINKAGE GUIDE	1
3	104-056	RELEASE CONNECTOR ROD	1
4	104-057	LINKAGE LOCK PIN	1
5	104-058	SPRING TENSION BRACKET	1
6	5-119-002	COMPRESSION SPRING	1
7	5-589-030	HANDLE RELEASE LEVER	1
8	6-132-004	BUSHING, .7500 X .5110 X 1.438	1
9	7-113-102	CAP SCREW, 1/2" NC X 1-1/2"	1
10	7-113-113	CAP SCREW, 1/2" NC X 2-3/4"	1
11	7-723-015	HEX NUT, 1/2" NC	2
12	7-813-015	FLAT WASHER, 1/2"	2
13	7-843-015	LOCK WASHER, 1/2"	2
14	7-969-001	IRON RIVET, 1/4" X 1" RH	3

J.E. LOVE COMPANY
LOVE®

308 W. CALIFORNIA STREET
P.O. BOX 188
GARFIELD, WASHINGTON 99130-0188

Trashmaster Model -1105-510, Hydraulic lift

DRIVE CHAIN ROUTING

FRONT IDLER SPROCKET

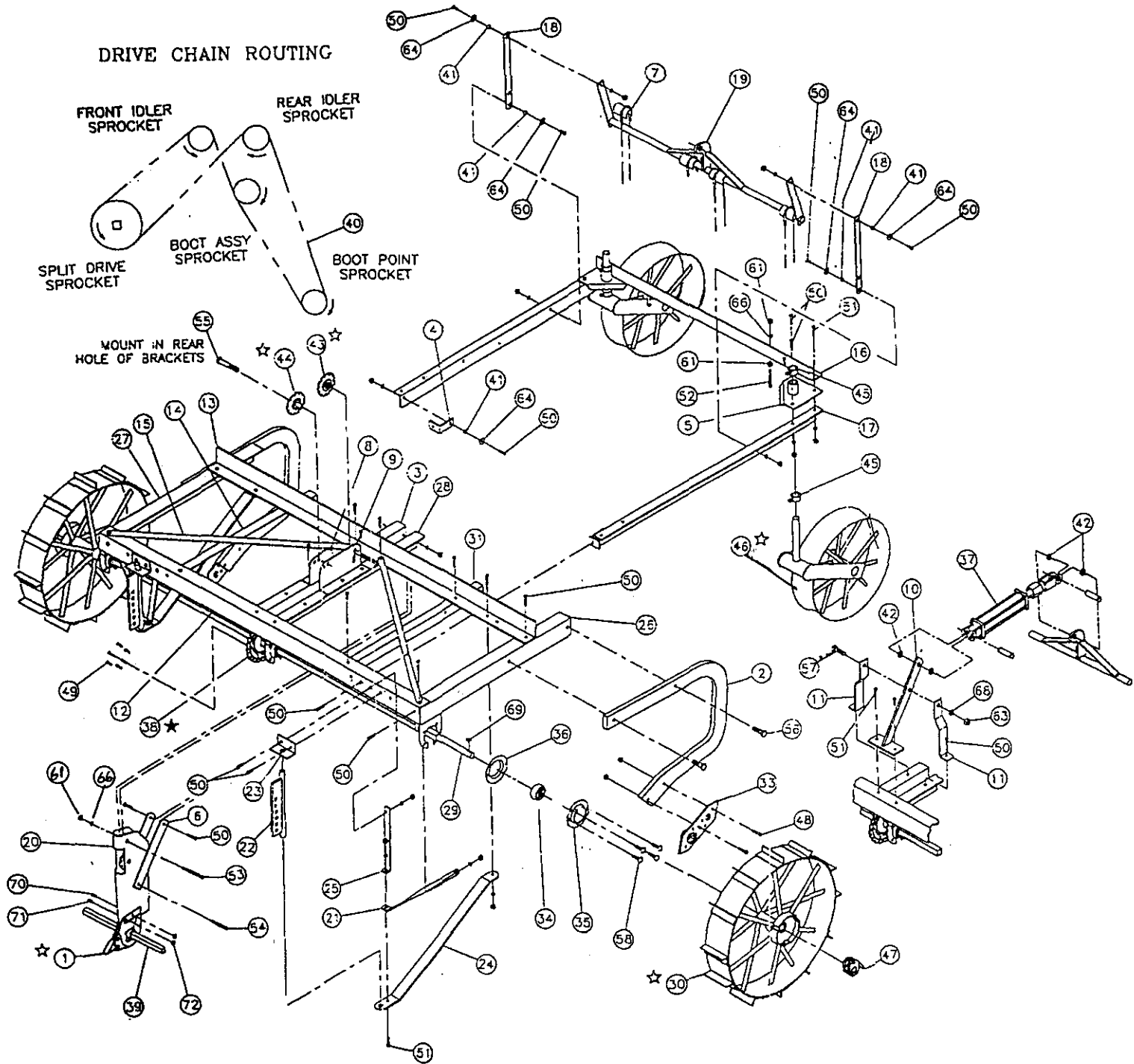
REAR IDLER SPROCKET

SPLIT DRIVE SPROCKET

BOOT ASSY SPROCKET

BOOT POINT SPROCKET

MOUNT IN REAR HOLE OF BRACKETS



5A

Calkins

1600 SERIES
CHISEL PLOW

Trashmaster Model -1105-510, Hydraulic lift

REF. No.	PART NUMBER	DESCRIPTION	QTY.
1	103-515	1" STD BOOT BOTTOM ASSY	1
	103-515	1" ROCK BOOT BOTTOM ASSY	1
2	104-013	GOOSENECK (16" CENTER HOLES)	2
3	104-014	BOOT CROSSMEMBER RH	1
4	104-019	TRANSPORT PIVOT BRACKET	2
5	104-022	CASTER WHEEL BEARING	2
6	104-025	BOOT BRACE STRAP	2
7	104-027	TRANSPORT LIFT BEARING	4
8	104-032	IDLER SPROCKET BRACKET RH	1
9	104-033	IDLER SPROCKET BRACKET LH	1
10	104-034	CYLINDER MOUNT BRACKET	1
11	104-039	SUPPORT BRACKET	2
12	104-041	FRONT FRAME MEMBER	1
13	104-042	REAR FRAME MEMBER	1
14	104-043	LIFT SUPPORT FRAME MEMBER RH	1
15	104-045	DIAGONAL BRACE	2
16	104-046	REAR TRANSPORT MEMBER	1
17	104-048	TRANSPORT LEAD BAR	2
18	104-049	TRANSPORT LIFT STRAP	2
19	104-051	TRANSPORT LIFT	2
20	104-081	BOOT BODY ASSY	1
21	104-102	BRACE DEPTH HITCH	2
22	104-109	DEPTH HITCH	2
23	104-110	BRACKET, DEPTH HITCH	2
24	104-111	BRACKET, DEPTH HITCH PULL	2
25	104-113	DEPTH HITCH SUPPORT	2
26	104-167	END CROSSMEMBER LH	1
27	104-168	END CROSSMEMBER RH	1
28	104-169	BOOT CROSSMEMBER LH	1
29	104-170	SQUARE AXLE	1
30	104-555	CLEATED 30" WHEEL ASSY	2
31	104-620	LIFT SUPPORT FRAME MEMBER LH	1
32	105-098	1" STANDARD SHOE ASSEMBLY	1
33	105-101	1" LOCKING STANDARD SHOE ASSEMBLY	1
34	5-449-031	BEARING	3
35	5-499-010	BEARING FLANGE WITH ZERK	3
36	5-499-011	BEARING FLANGE	3
37	5-818-629	CYLINDER STOP	2
38	5-818-630	CYLINDER, 2-1/2" x 5" ASAE	1
39	5-919-598	SPROCKET SPLIT DRIVE 1/2" CHROME	1
40	5-966-110	WEEDER ROD 1" x 10' 6"	1
41	6-016-005	CHAIN ASSY, 2050 107 LINK	1
42	6-133-007	BUSHING	6
43	6-143-050	BUSHING	6
44	6-449-002	IDLER SPROCKET ASSY REAR	1
45	6-449-030	IDLER SPROCKET ASSY FRONT	1
46	5-486-001	SET COLLAR, 1-1/4" ROUND	1
47	6-639-002	CONCAVED 22" WHEEL ASSY	2
48	6-919-347	HUB RATCHET GEAR ASSY W-146 & 147	2
49	7-112-017	CAP SCREW, 7/16" NC X 2"	4
50	7-112-050	CAP SCREW, 3/8" NC X 1"	2
51	7-113-102	CAP SCREW, 1/2" NC X 1-1/2"	27
52	7-113-110	CAP SCREW, 1/2" NC X 2"	16
53	7-113-120	CAP SCREW, 1/2" NC X 3-1/2"	2
54	7-113-122	CAP SCREW, 1/2" NC X 4"	2
55	7-113-122	CAP SCREW, 1/2" NC X 4"	2
56	7-114-045	CAP SCREW, 5/8" NC X 4-1/2"	1
57	7-114-110	CAP SCREW, 5/8" NC X 2-1/4"	4
58	7-115-022	CAP SCREW, 3/4" NC X 2-1/4"	4
59	7-343-003	CARRIAGE BOLT, 1/2" NC X 1-1/4"	12
60	7-722-010	HEX NUT, 3/8" NC	6
61	7-722-015	HEX NUT, 7/16" NC	4
62	7-723-015	HEX NUT, 1/2" NC	69
63	7-724-005	HEX NUT, 5/8" NC	3
64	7-725-002	HEX NUT, 3/4" NC	1
65	7-813-015	FLAT WASHER, 1/2"	5
66	7-842-010	LOCK WASHER, 5/8"	6
67	7-843-015	LOCK WASHER, 1/2"	67
68	7-844-020	LOCK WASHER, 5/8"	5
69	7-845-020	LOCK WASHER, 3/4"	1
70	7-932-114	SQ KEY 3/8" x 1-1/4"	2
71	8-113-002	CAP SCREW, 1/2" NC X 1-1/2" TAPERED HEAD	1
72	8-113-003	CAP SCREW, 1/2" NC X 1-1/4" TAPERED HEAD	1
	8-723-001	HEX NUT, 1/2" NC TAPERED	2

NOTE:

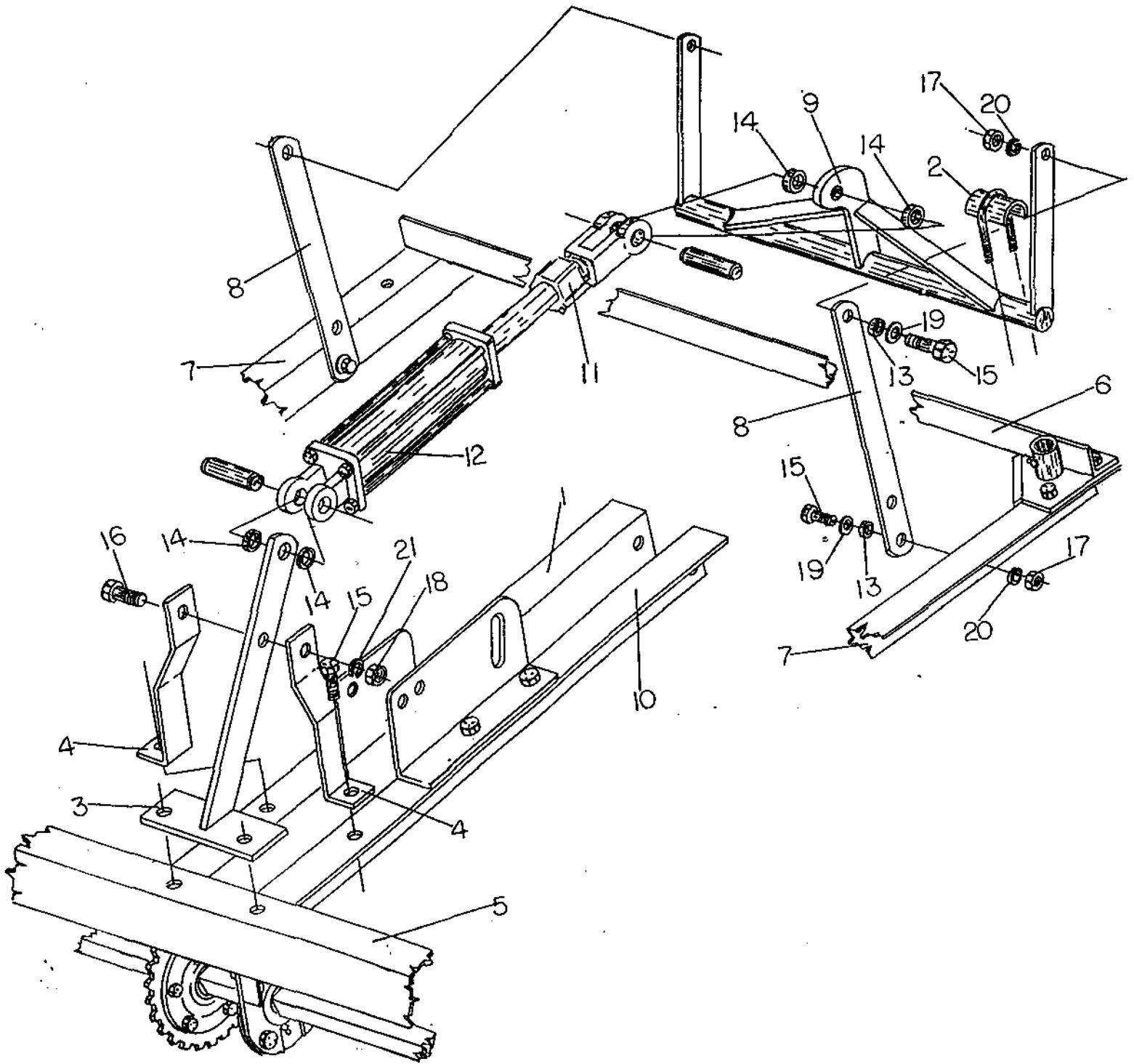
USE 1/2" x 1-1/2" CAP SCREWS WHEN JOINING TWO FRAME MEMBERS.
 USE 1/2" x 2" CAP SCREWS WHEN JOINING THREE FRAME MEMBERS.

ONE LOCK WASHER AND HEX NUT OF CORRECT SIZE TO
 BE USED WITH EACH CAP SCREW UNLESS OTHERWISE NOTED.

★ SEE DETAIL ON SEPARATE PAGE.

★ INSTALL BEARING ON RIGHT HAND SIDE OF FRAME MEMBER.

HYDRAULIC LIFT COMPONENTS & FRAME MEMBERS



Calkins
TRASHMASTER

J.E. LOVE COMPANY
LOVE
309 W. CALIFORNIA STREET
P.O. BOX 198
GARFIELD, WASHINGTON 99130-0198

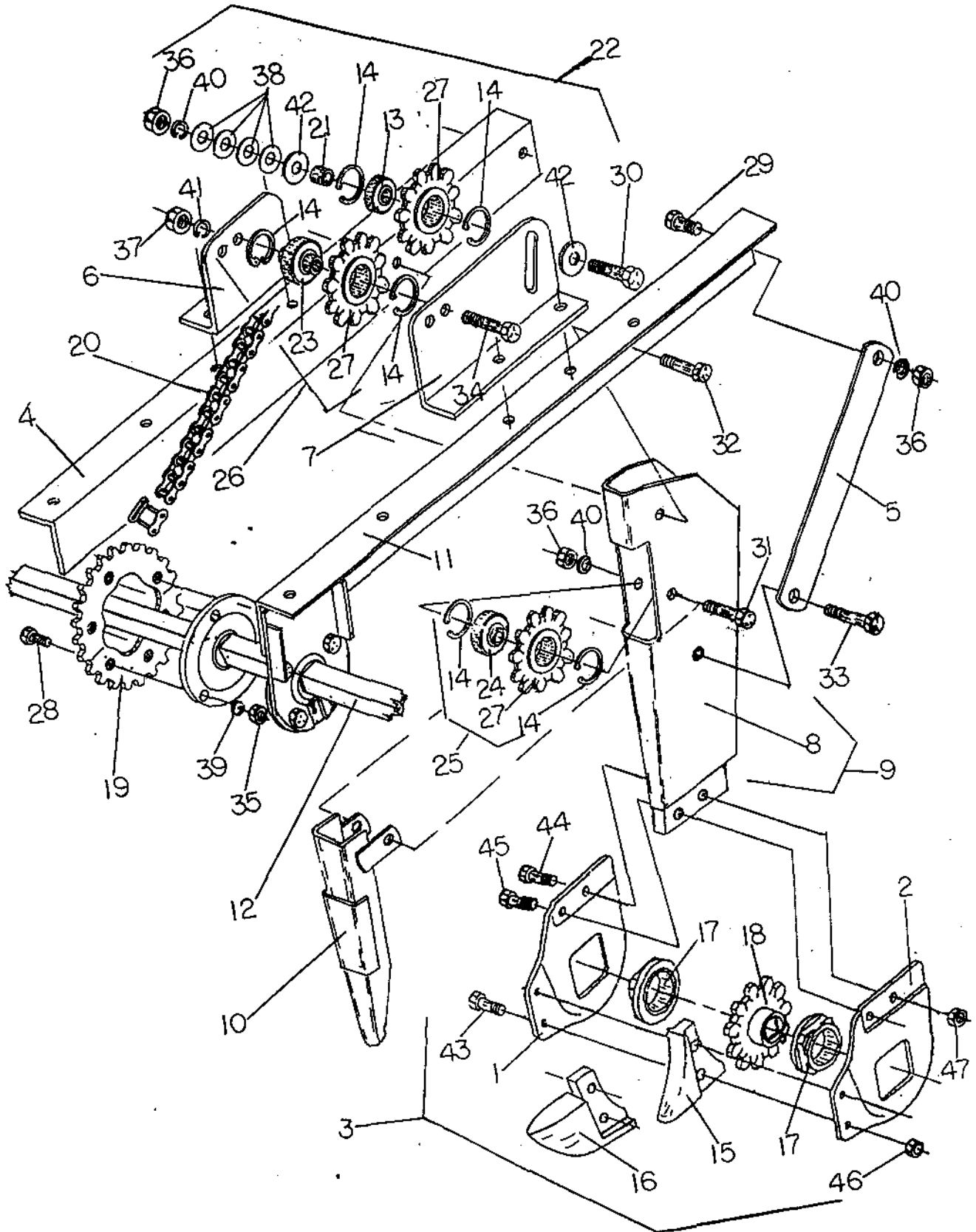
HYDRAULIC LIFT COMPONENTS & FRAME MEMBERS

KEY	PART NO.	DESCRIPTION
1.	0104-014	BOOT CROSSMEMBER, RH
2.	0104-027	TRANSPORT LIFT BEARING
3.	0104-034	CYLINDER MOUNT BRACKET
4.	0104-039	SUPPORT BRACKET
5.	0104-041	FRONT FRAME MEMBER
6.	0104-046	REAR TRANSPORT MEMBER
7.	0104-048	TRANSPORT LEAD BAR
8.	0104-049	TRANSPORT LIFT STRAP
9.	0104-051	TRANSPORT LIFT
10.	0104-169	BOOT CROSSMEMBER, LH
11.	5818-629	CYLINDER STOP
12.	5818-630	HYDRAULIC CYLINDER, 2-1/2" X 8" W/STOP
13.	6133-007	BUSHING
14.	6143-050	BUSHING
15.	7113-102	CAP SCREW, 1/2" NC X 1-1/2"
16.	7115-022	CAP SCREW, 3/4" NC X 2-1/4"
17.	7723-015	HEX NUT, 1/2" NC
18.	7725-002	HEX NUT, 3/4" NC
19.	7813-015	FLATWASHER, 1/2"
20.	7843-015	LOCK WASHER, 1/2"
21.	7845-020	LOCK WASHER, 3/4"



J.E. LOVE COMPANY
LOVE
308 W. CALIFORNIA STREET
P.O. BOX 183
GARFIELD, WASHINGTON 99130-0183

BOOT DRIVE COMPONENTS



Calkins
TRASHMASTER

J.E. LOVE COMPANY
LOVE

308 W. CALIFORNIA STREET
P.O. BOX 188
GARFIELD, WASHINGTON 99130-0188

BOOT DRIVE COMPONENTS

KEY	PART NO.	DESCRIPTION
1.	0103-062	BOOT BOTTOM, RH (FORMED, GREEN)
2.	0103-063	BOOT BOTTOM, LH (FORMED, GREEN)
3.	0103-515	BOOT BOTTOM ASSY, 1" SQ STANDARD
	0103-516	BOOT BOTTOM ASSY, 1" SQ ROCK
4.	0104-014	CROSSMEMBER, BOOT, RH (FRAMEMEMBER)
5.	0104-025	BRACE, BOOT
6.	0104-032	BRACKET, IDLER SPROCKET, RH
7.	0104-033	BRACKET, IDLER SPROCKET, LH
8.	0104-080	BOOT BODY WELDMENT
9.	0104-081	BOOT BODY ASSEMBLY
10.	0104-103	CHAIN GUARD (OPTIONAL)
11.	0104-169	CROSSMEMBER, BOOT, LH (FRAMEMEMBER)
12.	0104-170	AXLE, SQUARE
13.	5449-020	BEARING
14.	5489-002	SNAP RING
15.	5919-606	BOOT POINT, STANDARD
16.	5919-607	BOOT POINT, ROCK, NARROW
	5919-608	BOOT POINT, ROCK, WIDE
17.	5919-609	BLOCK, BOOT
18.	5919-679	SPROCKET, BOOT, 1" SQ
19.	5919-698	SPROCKET, SPLIT DRIVE
20.	6016-005	CHAIN ASSEMBLY
21.	6133-007	BUSHING, IDLER SPROCKET, REAR
22.	6449-002	IDLER SPROCKET ASSEMBLY, REAR
23.	6449-007	BEARING W/BUSHING
24.	6449-008	BEARING W/BUSHING
25.	6449-009	IDLER SPROCKET ASSEMBLY, BOOT
26.	6449-030	IDLER SPROCKET ASSEMBLY, FRONT
27.	6919-384	IDLER SPROCKET
28.	7112-050	CAP SCREW, 3/8" NC X 1"
29.	7113-102	CAP SCREW, 1/2" NC X 1-1/2"
30.	7113-111	CAP SCREW, 1/2" NC X 2-1/4"
31.	7113-115	CAP SCREW, 1/2" NC X 3"
32.	7113-122	CAP SCREW, 1/2" NC X 4"
33.	7113-122	CAP SCREW, 1/2" NC X 4"
34.	7114-045	CAP SCREW, 5/8" NC X 4-1/2"
35.	7722-010	HEX NUT, 3/8" NC
36.	7723-015	HEX NUT, 1/2" NC
37.	7723-119	HEX NUT, 5/8" NC
38.	7813-015	FLAT WASHER, 1/2"
39.	7842-010	LOCK WASHER, 3/8"
40.	7843-015	LOCK WASHER, 1/2"
41.	7844-020	LOCK WASHER, 5/8"
42.	7893-004	MACHINE BUSHING, 1/2"
43.	8112-001	CAP SCREW, 3/8" NC X 1-1/4" TAPERED HEAD
44.	8113-002	CAP SCREW, 1/2" NC X 1-1/2" TAPERED HEAD
45.	8113-003	CAP SCREW, 1/2" NC X 1-1/4" TAPERED HEAD
46.	8722-001	HEX NUT, 3/8" NC TAPERED
47.	8723-001	HEX NUT, 1/2" NC TAPERED

Calkins

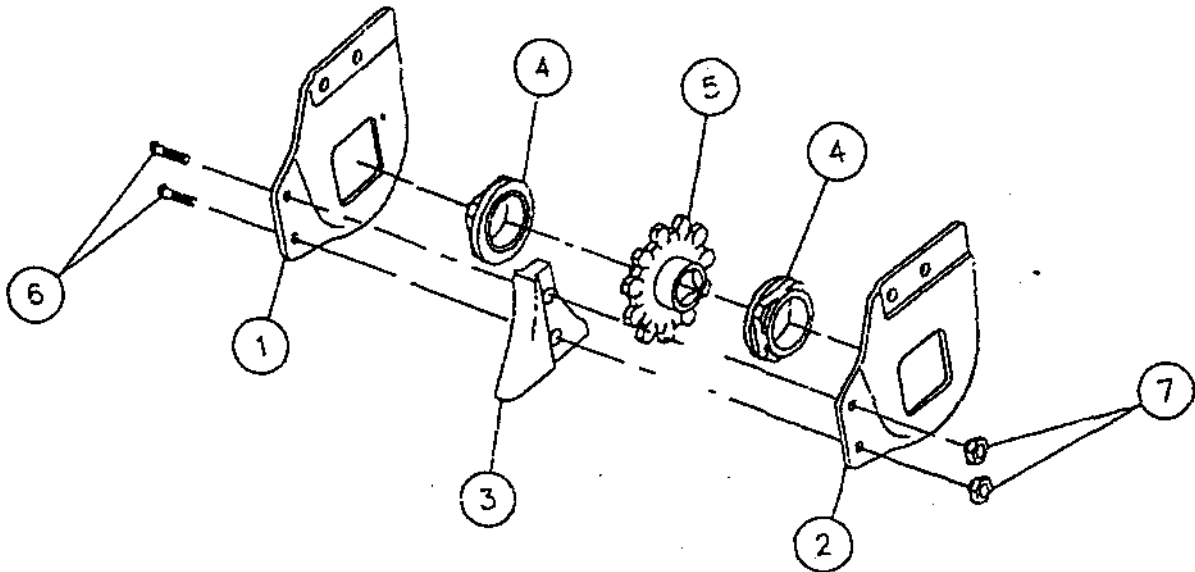
TRASHMASTER

J.E. LOVE COMPANY

LOVE

300 W. CALIFORNIA STREET
P.O. BOX 100
GARFIELD, WASHINGTON 99130-0100

Calkins
TRASHMASTER



0103-515 1" BOOT BOTTOM ASSY

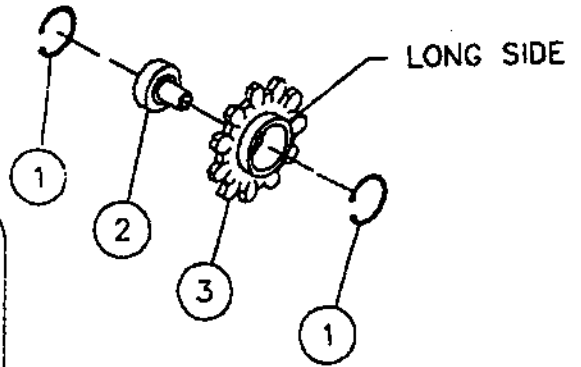
REF No.	PART No.	DESCRIPTION	QTY
1	103-062	BOOT BOTTOM RH	1
2	103-063	BOOT BOTTOM LH	1
	5-919-606	STANDARD BOOT POINT	1
3	5-919-607	NARROW ROCK BOOT POINT	1
	5-919-608	WIDE ROCK BOOT POINT	
4	5-919-609	BLOCK BOOT, NARROW	2
5	5-919-679	1" BOOT SPROCKET	1
6	8-112-001	CAP SCREW, 3/8" NC X 1-1/4" TAPERED	2
7	8-722-001	NUT, 3/8" NC TAPERED	2

J.E. LOVE COMPANY

LOVE®

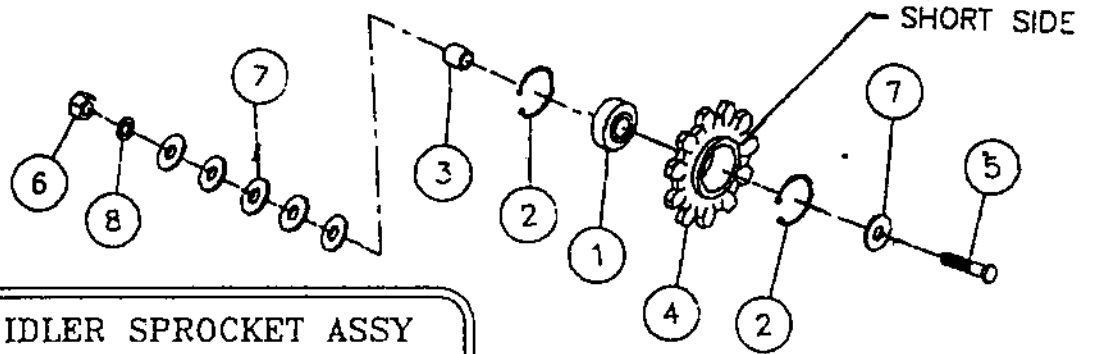
309 W. CALIFORNIA STREET
 P.O. BOX 185
 GARFIELD, WASHINGTON 99130-0185

Calkins
TRASHMASTER



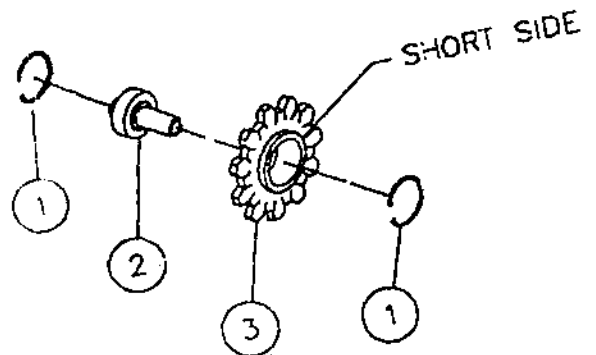
6-449-009 IDLER SPROCKET ASSY

REF No.	PART No.	DESCRIPTION	QTY
1	5-489-002	SNAP RING, 1.85 BORE	2
2	6-449-002	BEARING W/BUSHING	1
3	6-919-384	IDLER SPROCKET	1



6-449-002 IDLER SPROCKET ASSY

REF No.	PART No.	DESCRIPTION	QTY
1	5-449-020	BEARING #88120	1
2	5-489-002	SNAP RING, 1.85 BORE	2
3	6-133-007	BUSHING, .750D X .51ID X .438	1
4	6-919-384	IDLER SPROCKET	1
5	7-113-111	CAP SCREW, 1/2" NC X 2-1/4"	1
6	7-723-015	HEX NUT, 1/2" NC	1
7	7-813-015	FLAT WASHER, 1/2"	6
8	7-843-015	LOCK WASHER, 1/2"	1



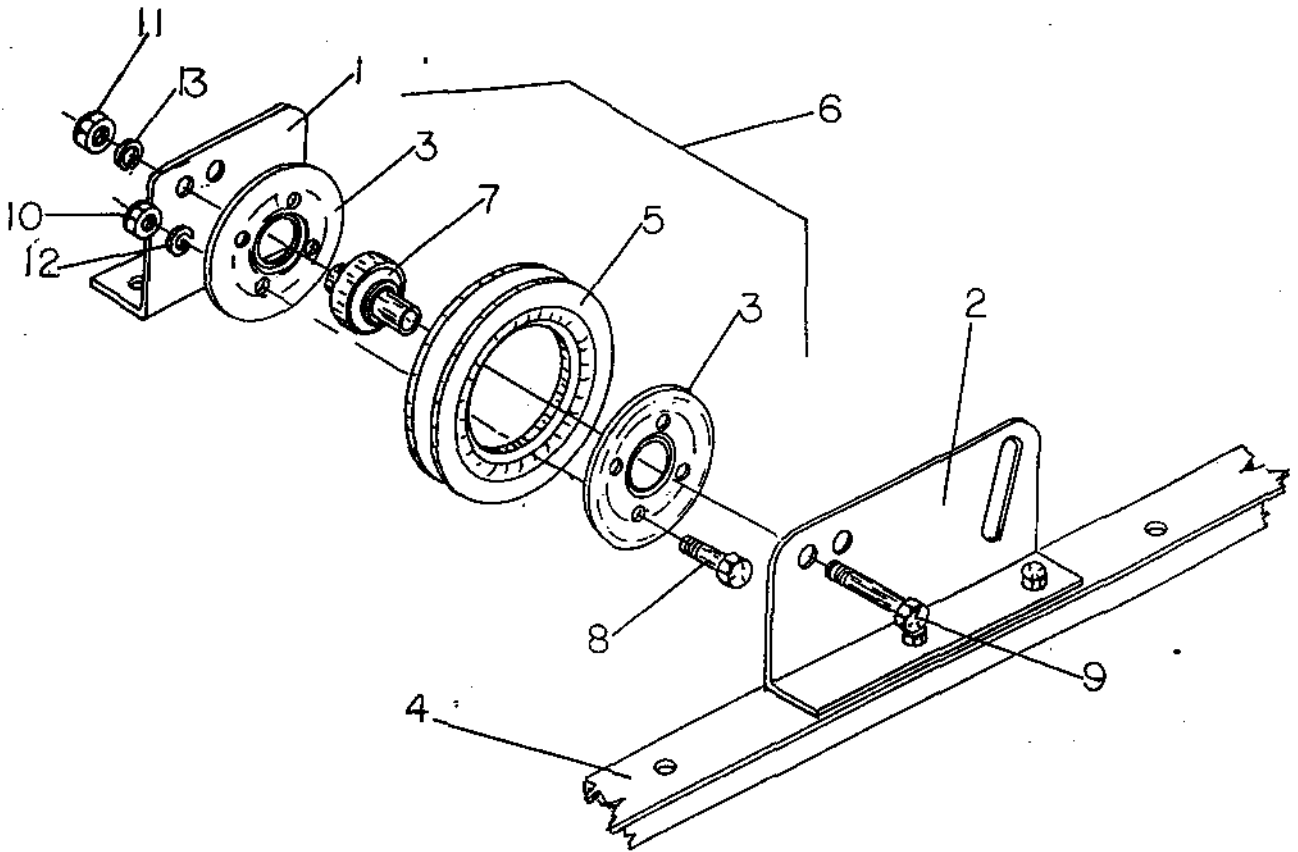
6-449-030 IDLER SPROCKET ASSY

REF No.	PART No.	DESCRIPTION	QTY
1	5-489-002	SNAP RING, 1.85 BORE	2
2	6-449-007	BEARING W/BUSHING	1
3	6-919-384	IDLER SPROCKET	1

J.E. LOVE COMPANY
LOVE®

309 W. CALIFORNIA STREET
P.O. BOX 188
GARFIELD, WASHINGTON 99130-0188

POWER IDLER PULLEY



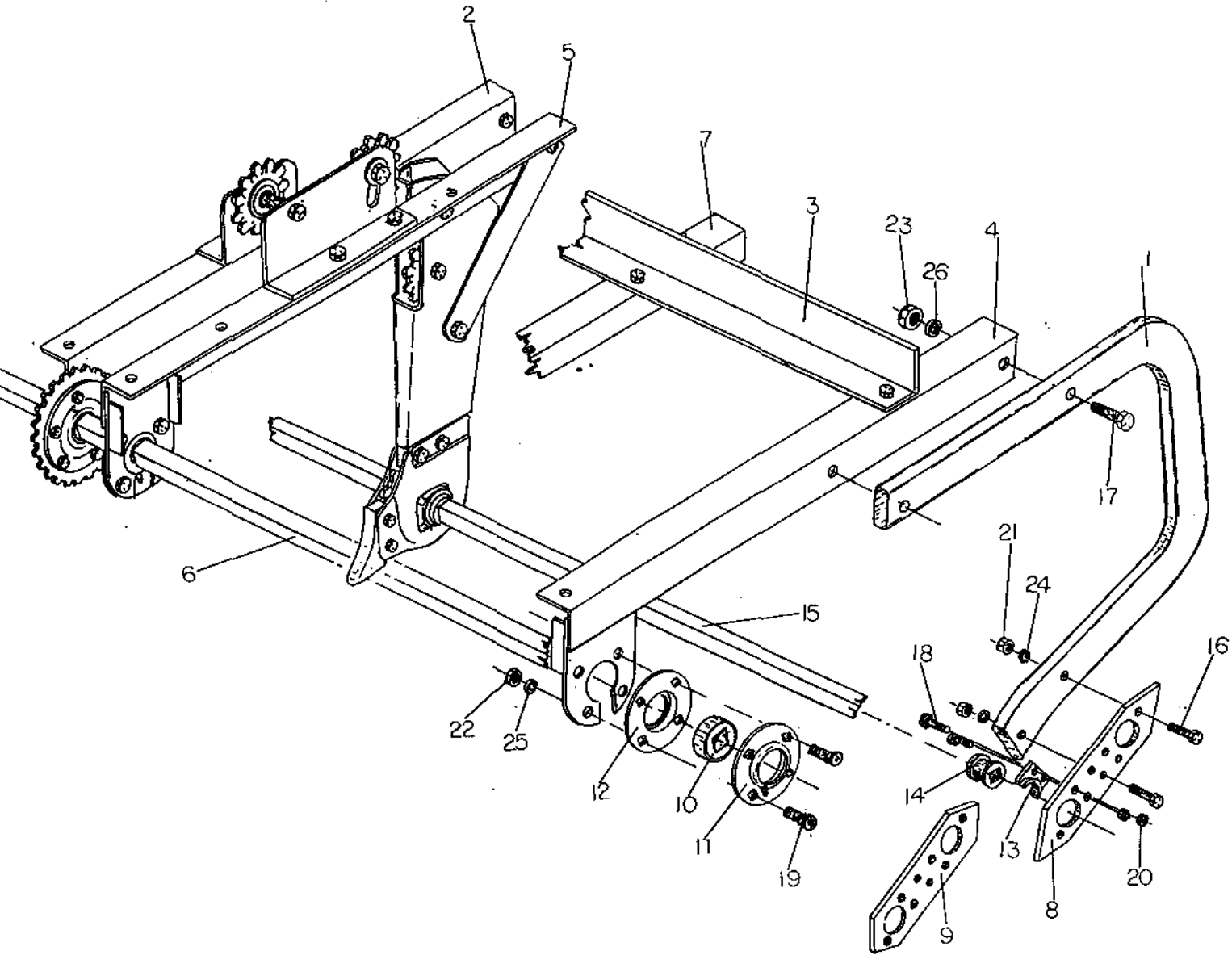
KEY	PART NO.	DESCRIPTION
1.	0104-032	BRACKET, POWER IDLER, RH
2.	0104-033	BRACKET, POWER IDLER, LH
3.	0104-079	DISK, IDLER PULLEY
4.	0104-169	CROSSMEMBER, BOOT, LH
5.	5919-199	RIM, IDLER PULLEY
6.	5919-400	POWER IDLER PULLEY ASSEMBLY
7.	6449-007	BEARING W/BUSHING
8.	7111-023	CAP SCREW, 5/16" NC X 1-1/2"
9.	7114-045	CAP SCREW, 5/8" NC X 4-1/2"
10.	7721-005	HEX NUT, 5/16" NC
11.	7723-119	HEX NUT, 5/8" NC
12.	7841-015	LOCK WASHER, 5/16"
13.	7844-020	LOCK WASHER, 5/8"

Calkins
TRASHMASTER

J.E. LOVE COMPANY
LOVE

309 W. CALIFORNIA STREET
P.O. BOX 188
GARFIELD, WASHINGTON 99130-0188

FRAMEMEMBERS-GOOSENECK-WEEDER ROD-SQUARE AXLE BEARING



Calkins
TRASHMASTER

J.E. LOVE COMPANY
LOVE

309 W. CALIFORNIA STREET
P.O. BOX 188
GARFIELD, WASHINGTON 99130-0188

FRAMEMEMBERS-GOOSENECK-WEEDER ROD-SQUARE AXLE BEARING

KEY	PART NO.	DESCRIPTION
1.	0104-013	GOOSENECK (16" C/C HOLES)
2.	0104-014	BOOT CROSSMEMBER, RH
3.	0104-042	REAR FRAME MEMBER
4.	0104-167	END CROSSMEMBER, LH
5.	0104-169	BOOT CROSSMEMBER, LH
6.	0104-170	SQUARE AXLE
7.	0104-820	LIFT SUPPORT MEMBER, LH
8.	0105-062	STANDARD SHOE FOR GOOSENECK
9.	0105-078	ROCK SHOE FOR GOOSENECK
10.	5449-031	BEARING, SQUARE AXLE
11.	5499-010	BEARING FLANGE W/ZERK
12.	5499-011	BEARING FLANGE
13.	5919-612	BLOCK
14.	5919-617	SPOOL, 1" SQUARE
	6919-355	LOCKING SPOOL ASSY, 1"
15.	5966-110	WEEDER ROD, 1" SQUARE X 10-1/2'
16.	7112-017	CAP SCREW, 7/16" NC X 2"
17.	7114-110	CAP SCREW, 5/8" NC X 2-1/4"
18.	7342-012	CARRIAGE BOLT, 3/8" NC X 1-1/4"
19.	7343-003	CARRIAGE BOLT, 1/2" NC X 1-1/4"
20.	7722-010	HEX NUT, 3/8" NC
21.	7722-015	HEX NUT, 7/16" NC
22.	7723-015	HEX NUT, 1/2" NC
23.	7723-119	HEX NUT, 5/8" NC
24.	7842-015	LOCK WASHER, 7/16"
25.	7843-015	LOCK WASHER, 1/2"
26.	7844-020	LOCK WASHER, 5/8"

Calkins

TRASHMASTER

J.E. LOVE COMPANY

LOVE

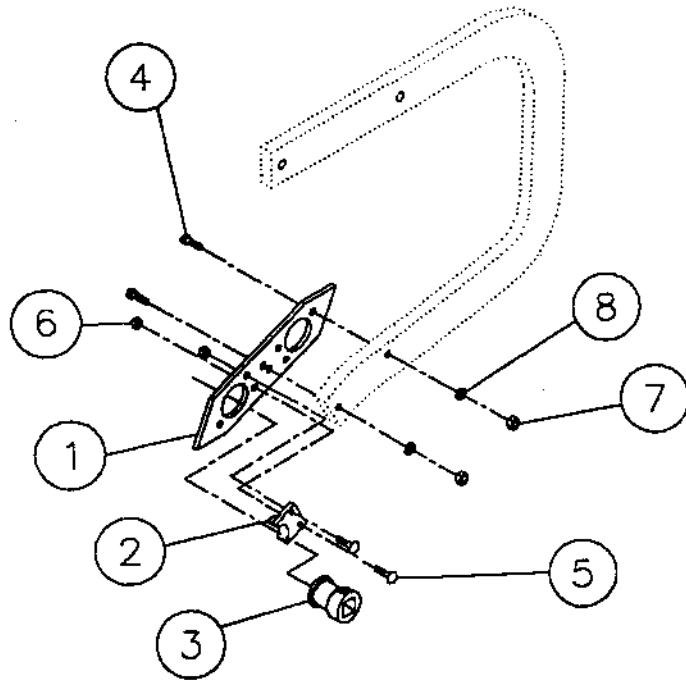
309 W. CALIFORNIA STREET
P.O. BOX 188
GARFIELD, WASHINGTON 99130-0188

Calkins

TRASHMASTER

STANDARD SHOE ASSEMBLY

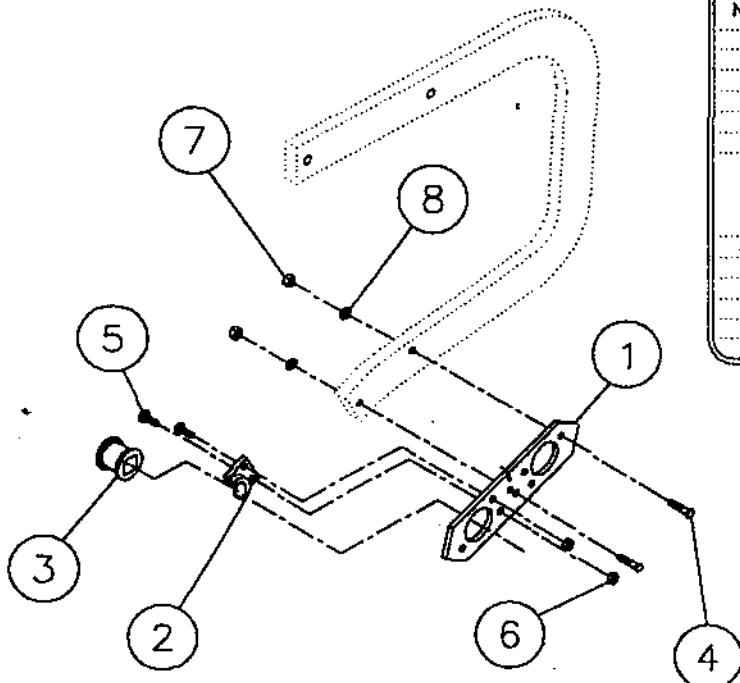
REF. No.	PART NUMBER	DESCRIPTION	QTY.
	105-097	7/8" STANDARD SHOE ASSEMBLY	
	105-098	1" STANDARD SHOE ASSEMBLY	
	105-101	1" LOCKING SHOE ASSEMBLY	
	105-102	7/8" LOCKING SHOE ASSEMBLY	
1	105-082	STANDARD SHOE FOR GOOSENECK	1
2	5-919-612	BLOCK, HI-CHROME	1
	5-919-616	SPOOL 7/8" SQ HI-CHROME	
	5-919-617	SPOOL 1" SQ HI-CHROME	
3	6-919-350	LOCKING SPOOL ASSY 7/8" HI-CROME	1
	6-919-355	LOCKING SPOOL ASSY 1" HI-CROME	
4	7-112-017	7/16" X 2" CAP SCREW	2
5	7-342-012	3/8" X 1-1/4" CARRIAGE BOLT	2
6	7-722-010	3/8" HEX NUT	2
7	7-722-015	7/16" HEX NUT	2
8	7-842-015	7/16" LOCK WASHER	2



STANDARD SHOE RH

ROCK SHOE ASSEMBLY

REF. No.	PART NUMBER	DESCRIPTION	QTY.
	105-099	7/8" ROCK SHOE ASSEMBLY	
	105-100	1" ROCK SHOE ASSEMBLY	
	105-103	1" LOCKING ROCK SHOE ASSEMBLY	
	105-105	7/8" LOCKING ROCK SHOE ASSEMBLY	
1	105-078	ROCK SHOE FOR GOOSENECK	1
2	5-919-612	BLOCK, HI-CHROME	1
	5-919-616	SPOOL 7/8" SQ HI-CHROME	
	5-919-617	SPOOL 1" SQ HI-CHROME	
3	6-919-350	LOCKING SPOOL ASSY 7/8" HI-CROME	1
	6-919-355	LOCKING SPOOL ASSY 1" HI-CROME	
4	7-112-017	7/16" X 2" CAP SCREW	2
5	7-342-012	3/8" X 1-1/4" CARRIAGE BOLT	2
6	7-722-010	3/8" HEX NUT	2
7	7-722-015	7/16" HEX NUT	2
8	7-842-015	7/16" LOCK WASHER	2



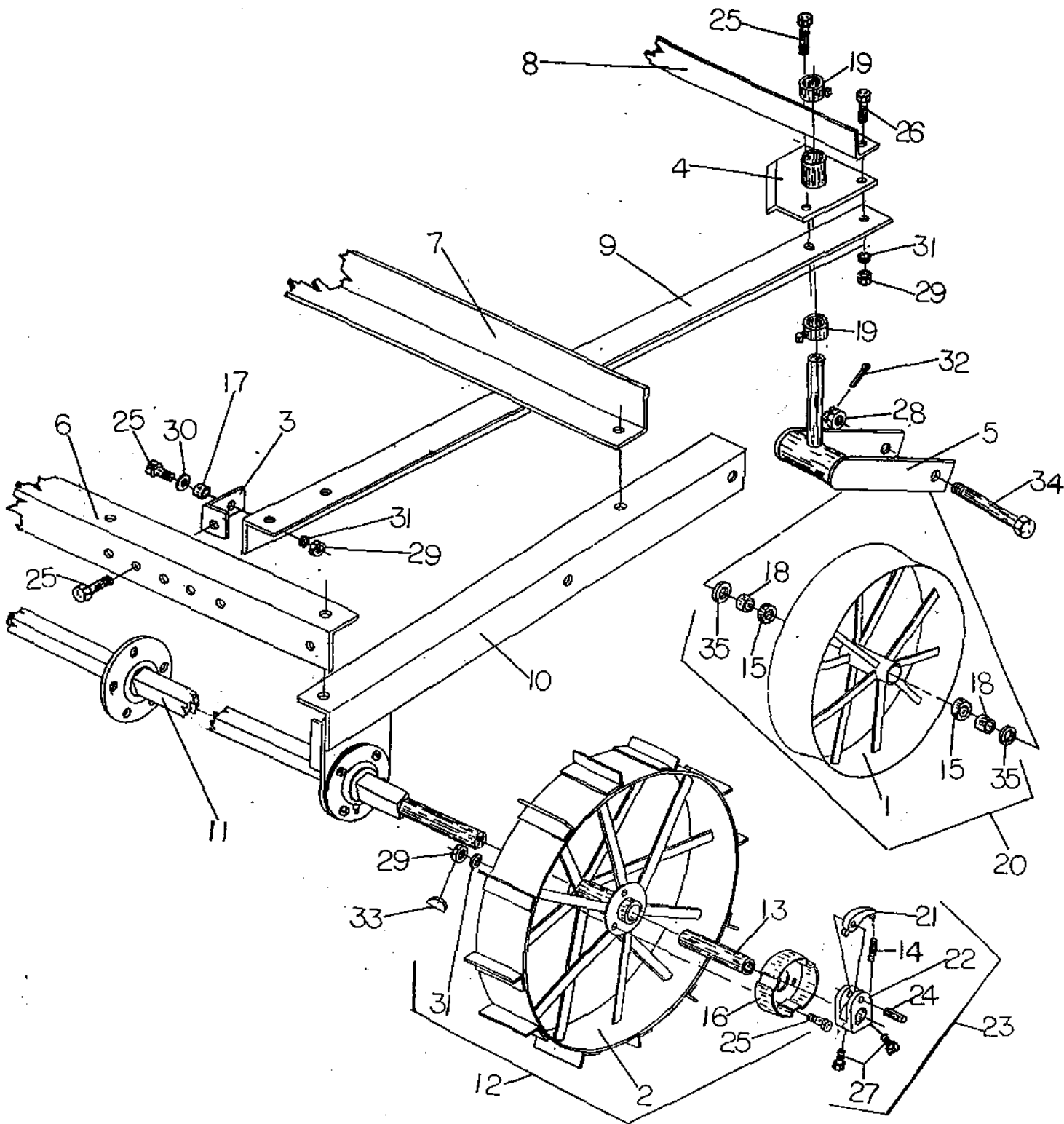
ROCK SHOE LH

J.E. LOVE COMPANY

LOVE

309 W. CALIFORNIA STREET
P.O. BOX 188
GARFIELD, WASHINGTON 99130-0188

CLEATED WHEEL - TILLER WHEEL - RATCHET GEAR & FRAME MEMBERS



Calkins
TRASHMASTER

J.E. LOVE COMPANY
LOVE

309 W. CALIFORNIA STREET
P.O. BOX 188
GARFIELD, WASHINGTON 99130-0188

CLEATED WHEEL – TILLER WHEEL – RATCHET GEAR & FRAMEMEMBERS

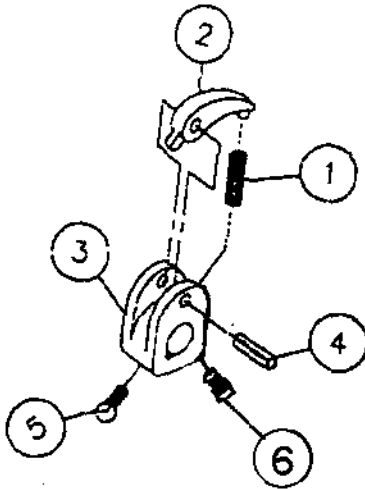
KEY	PART NO.	DESCRIPTION
1.	0104-004	22" CONCAVE TILLER WHEEL
2.	0104-007	30" CLEATED WHEEL
3.	0104-019	TRANSPORT PIVOT BRACKET
4.	0104-022	TILLER WHEEL BRACKET & BEARING
5.	0104-040	FORK, TILLER WHEEL
6.	0104-041	FRONT FRAMEMEMBER
7.	0104-042	REAR FRAMEMEMBER
8.	0104-046	REAR TRANSPORT MEMBER
9.	0104-048	TRANSPORT LEAD BAR
10.	0104-167	END CROSSMEMBER, LH
11.	0104-170	SQUARE AXLE
12.	0104-555	CLEATED 30" WHEEL ASSEMBLY
13.	0104-897	NYLATRON BUSHING
14.	5110-001	COMPRESSION SPRING
15.	5449-012	BEARING
16.	5919-905	CLUTCH HOUSING
17.	6133-007	BUSHING
18.	6135-025	BUSHING
19.	6486-001	SET COLLAR, 1-1/4" ROUND
20.	6639-002	TILLER WHEEL ASSEMBLY (CONCAVE)
21.	6919-146	PAWL
22.	6919-147	RATCHET HOUSING
23.	6919-347	HUB RATCHET GEAR ASSEMBLY
24.	7023-001	ROLL PIN
25.	7113-102	CAPSCREW, 1/2" NC X 1-1/2"
26.	7113-110	CAPSCREW, 1/2" NC X 2"
27.	7513-012	SETSCREW, 1/2" NC X 1"
	7513-014	SETSCREW, 1/2" NC X 1-1/4"
28.	7715-850	CASTLE NUT, 3/4" NF
29.	7723-015	HEX NUT, 1/2" NC
30.	7813-015	FLAT WASHER, 1/2"
31.	7843-015	LOCK WASHER, 1/2"
32.	7910-150	COTTER PIN, 1/8" X 1-1/2"
33.	7932-114	SQ. KEY, 3/8" x 1-1/4"
34.	8115-005	AXLE BOLT, 3/4" NF X 8-1/8" W/PIN HOLE
35.	8885-001	DISHED WASHER, 3/4" X 20 GA



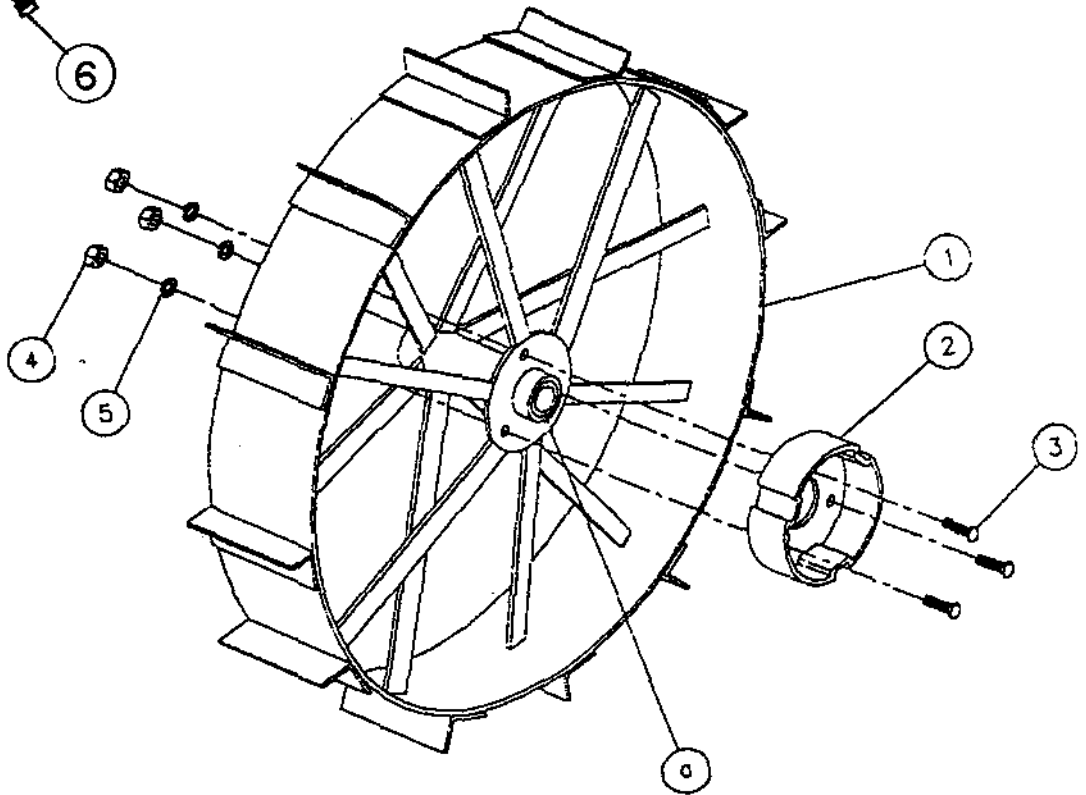
Calkins

TRASHMASTER

6-919-347 HUB RATCHET GEAR ASSY



REF No.	PART No.	DESCRIPTION	QTY
1	5-110-001	COMPRESSION SPRING	1
2	6-919-146	PAWL	1
3	6-919-147	RATCHET HOUSING	1
4	7-023-001	ROLL PIN	1
5	7-513-012	SET SCREW, 1/2" NC X 1"	1
6	7-513-014	SET SCREW, 1/2" NC X 1-1/4"	1



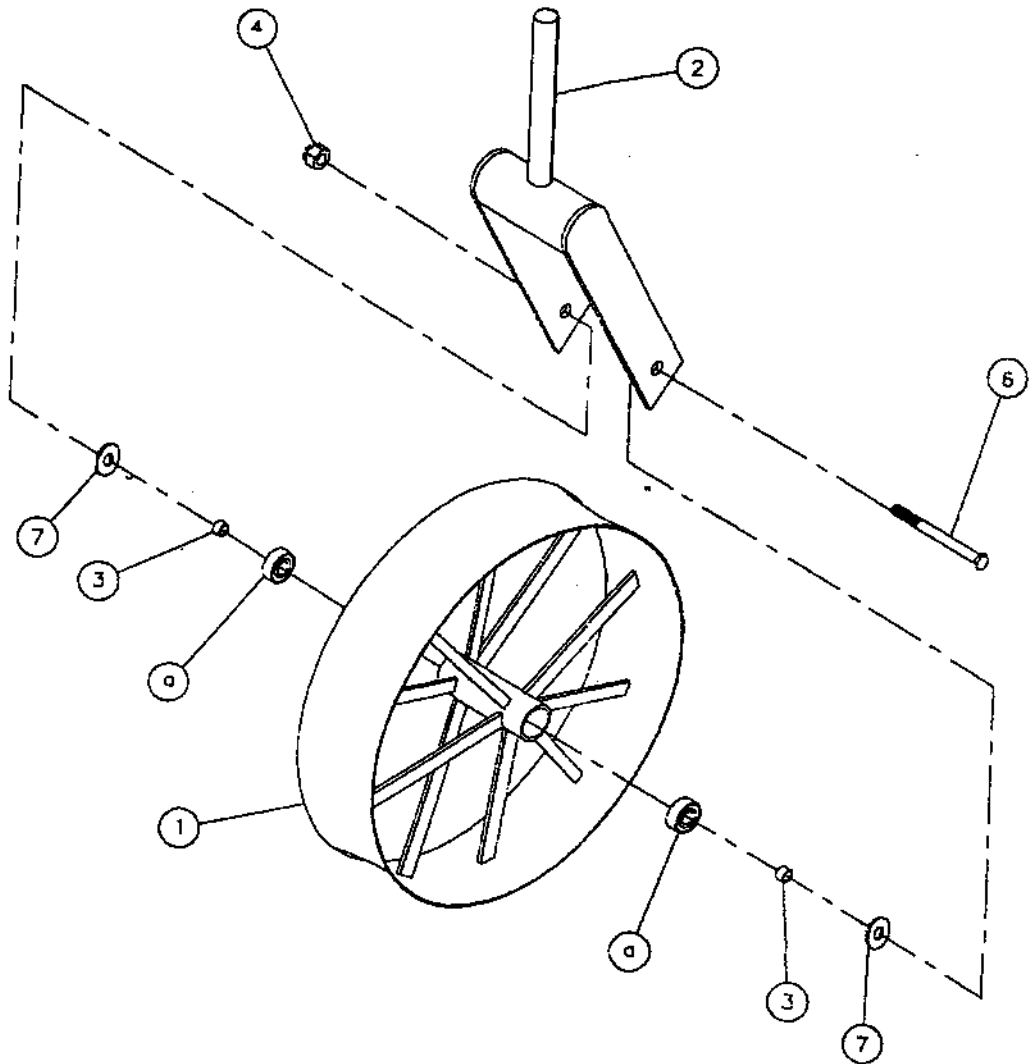
0104-555 CLEATED WHEEL ASSY

REF No.	PART No.	DESCRIPTION	QTY
1	104-007	30" CLEATED WHEEL	1
a	104-897	NYLATRON BUSHING	
2	5-919-905	CLUTCH HOUSING	1
3	7-113-102	CAP SCREW, 1/2" NC X 1-1/2"	3
4	7-723-015	HEX NUT, 1/2" NC	3
5	7-843-015	LOCK WASHER, 1/2"	3

J.E. LOVE COMPANY
LOVE

309 W. CALIFORNIA STREET
P.O. BOX 188
GARFIELD, WASHINGTON 99130-0188

Calkins
TRASHMASTER



6-639-002 CONCAVED WHEEL ASSY			
REF No.	PART No.	DESCRIPTION	QTY
1	104-004	22" TILLER WHEEL	1
a	5-449-012	BEARING	1
2	104-040	TILLER WHEEL FORK	1
3	6-135-025	BUSHING, 1 OD X .75 ID X .56	2
4	7-715-850	CASTLE NUT, 3/4" NF	1
5	7-910-150	COTTER PIN, 1/8" X 1-1/2"	1
6	8-115-005	BOLT, 3/4" NF X 8-1/8"	1
7	8-885-001	DISHED WASHER, 3/4" 20 GA	2

J.E. LOVE COMPANY
LOVE®

309 W. CALIFORNIA STREET
P.O. BOX 188
GARFIELD, WASHINGTON 99130-6188

Part Number Page Reference

PART NUMBER PAGE REFERENCE

<u>PART NO.</u>	<u>DESCRIPTION</u>	<u>PAGE(S)</u>
0103-515	1" STD BOOT BOTTOM ASSY	3, 5, 9
0103-516	1" ROCK BOOT BOTTOM ASSY	3, 5, 9
0103-062	BOOT BOTTOM, RH	9, 10
0103-063	BOOT BOTTOM, LH	9, 10
0104-004	22" CONCAVE TILLER WHEEL	17, 19
0104-007	30" CLEATED WHEEL	17, 18
0104-008	MANUAL LIFT SPROCKET	3
0104-013	GOOSENECK (16" C/C)	3, 5, 14
0104-014	BOOT CROSSMEMBER, RH	3, 5, 7, 9, 14
0104-019	TRANSPORT PIVOT BRACKET	3, 5, 17
0104-022	BEARING BRACKET, TILLER WHEEL	3, 5, 17
0104-025	BOOT BRACE STRAP	3, 5, 9
0104-027	TRANSPORT LIFT BEARING	3, 5, 7
0104-032	IDLER SPROCKET BRACKET, RH	3, 5, 9, 12
0104-033	IDLER SPROCKET BRACKET, LH	3, 5, 9, 12
0104-034	CYLINDER MOUNT BRACKET	5, 7
0104-039	SUPPORT BRACKET	5, 7
0104-040	FORK, TILLER WHEEL	17, 19
0104-041	FRONT FRAME MEMBER	3, 5, 7, 17
0104-042	REAR FRAME MEMBER	3, 5, 14, 17
0104-043	LIFT SUPPORT FRAME MEMBER, RH	3
0104-045	DIAGONAL BRACE	3, 5
0104-046	REAR TRANSPORT MEMBER	3, 5, 7, 17
0104-048	TRANSPORT LEAD BAR	3, 5, 7, 17
0104-049	TRANSPORT LIFT STRAP	3, 5, 7
0104-051	TRANSPORT LIFT	5, 7
0104-053	HANDLE	4
0104-054	HANDLE ASSY	3, 4
0104-055	LINKAGE, GUIDE	4
0104-056	RELEASE CONNECTOR ROD	4
0104-057	LINKAGE LOCK PIN	4
0104-058	SPRING TENSION BRACKET	4
0104-079	DISK, IDLER PULLEY	12
0104-080	BOOT BODY WELDMENT	9
0104-081	BOOT BODY ASSEMBLY	3, 5, 9
0104-102	BRACE, DEPTH HITCH	3, 5
0104-103	CHAIN GUARD	9
0104-109	DEPTH HITCH	3, 5
0104-110	BRACKET, DEPTH HITCH	3, 5
0104-111	BRACKET, DEPTH HITCH PULL	3, 5
0104-113	DEPTH HITCH SUPPORT	3, 5
0104-167	END CROSSMEMBER, LH	3, 5, 14, 17
0104-168	END CROSSMEMBER, RH	3, 5
0104-169	BOOT CROSSMEMBER	3, 5, 7, 9

PART NUMBER PAGE REFERENCE

<u>PART NO.</u>	<u>DESCRIPTION</u>	<u>PAGE(S)</u>
0104-170	SQUARE AXLE	3, 5, 9, 14, 17
0104-550	TRANSPORT LIFT ASSEMBLY	3
0104-555	CLEATED 30" WHEEL ASSEMBLY	3, 5, 17, 18
0104-820	LIFT SUPPORT FRAME MEMBER, LH	3, 5, 14
0104-897	NYLATRON BUSHING	17, 18
0105-062	STANDARD SHOE FOR GOOSENECK	14, 15
0105-078	ROCK SHOE FOR GOOSENECK	14, 15
0105-097	7/8" STANDARD SHOE ASSEMBLY	15
0105-098	1" STANDARD SHOE ASSEMBLY	3, 5, 15
0105-099	7/8" ROCK SHOE ASSEMBLY	15
0105-100	1" ROCK SHOE ASSEMBLY	15
0105-101	1" LOCKING SHOE ASSEMBLY	3, 5, 15
0105-102	7/8" LOCKING SHOE ASSEMBLY	15
0105-103	1" LOCKING ROCK SHOE ASSEMBLY	15
0105-105	7/8" LOCKING ROCK SHOE ASSEMBLY	15
5110-001	COMPRESSION SPRING	17, 18
5119-002	COMPRESSION SPRING	4
5449-012	BEARING, TILLER WHEEL	17, 19
5449-020	BEARING, IDLER	9
5449-031	BEARING, SQUARE AXLE	3, 5, 14
5489-002	SNAP RING	9, 11
5499-010	BEARING FLANGE, W/ZERK	3, 5, 14
5449-011	BEARING FLANGE	3, 5, 14
5589-030	HANDLE RELEASE LEVER	4
5818-629	CYLINDER STOP	5, 7
5818-630	HYDRAULIC CYLINDER, 2-1/2" X 8" ASAE W/STOP	5, 7
5919-199	RIM, IDLER PULLEY	12
5919-400	POWER IDLER PULLEY ASSEMBLY	12
5919-606	BOOT POINT, STANDARD	9, 10
5919-607	BOOT POINT, ROCK, NARROW	9, 10
5919-608	BOOT POINT, ROCK, WIDE	9, 10
5919-609	BLOCK, BOOT	9, 10
5919-612	BLOCK	14
5919-616	SPOOL, 7/8" SQUARE	15
5919-617	SPOOL, 1" SQUARE	14, 15
5919-679	SPROCKET, BOOT, 1" SQUARE	9, 10
5919-698	SPROCKET, SPLIT DRIVE	3, 5, 9
5919-905	CLUTCH HOUSING	17, 18
5966-110	WEEDER ROD, 1" SQUARE X 10'6"	3, 5, 14

PART NUMBER PAGE REFERENCE

<u>PART NO.</u>	<u>DESCRIPTION</u>	<u>PAGE(S)</u>
6016-005	CHAIN ASSEMBLY	3, 5, 9
6132-004	BUSHING, 0.75" OD	4
6133-007	BUSHING, 0.75" OD	3, 5, 7, 9, 11, 17
6135-025	BUSHING, 1" OD	17, 19
6143-050	BUSHING, 1.32" OD	5, 7
6449-002	IDLER SPROCKET ASSEMBLY, REAR	3, 5, 9, 11
6449-007	BEARING W/BUSHING	9, 11, 12
6449-008	BEARING W/BUSHING	9, 11
6449-009	IDLER SPROCKET ASSEMBLY, BOOT	9, 11
6449-030	IDLER SPROCKET ASSEMBLY, FRONT	3, 5, 9, 11
6486-001	SET COLLAR, 1-1/4" ROUND	3, 5, 17
6639-002	CONCAVE TILLER WHEEL ASSEMBLY	3, 5, 17, 19
6919-146	PAWL	17, 18
6919-147	RATCHET HOUSING	17, 18
6919-347	HUB RATCHET GEAR ASSEMBLY	3, 5, 17, 18
6919-350	LOCKING SPOOL ASSEMBLY, 7/8" SQUARE	15
6919-355	LOCKING SPOOL ASSEMBLY, 1" SQUARE	14, 15
6919-384	IDLER SPROCKET	9, 11
7023-001	ROLL PIN	17, 18
7111-023	CAP SCREW, 5/16" NC X 1-1/2"	12
7112-017	CAP SCREW, 7/16" NC X 2"	3, 5, 14, 15
7112-050	CAP SCREW, 3/8" NC X 1"	3, 5, 9
7113-102	CAP SCREW, 1/2" NC X 1-1/2"	3, 4, 5, 7, 9, 17, 18
7113-110	CAP SCREW, 1/2" NC X 2"	3, 5, 17
7113-111	CAP SCREW, 1/2" NC X 2-1/4"	9, 11
7113-113	CAP SCREW, 1/2" NC X 2-3/4"	4
7113-115	CAP SCREW, 1/2" NC X 3"	9
7113-120	CAP SCREW, 1/2" NC X 3-1/2"	3, 5
7113-122	CAP SCREW, 1/2" NC X 4"	3, 5, 9
7114-045	CAP SCREW, 5/8" NC X 4-1/2"	3, 5, 9, 12
7114-110	CAP SCREW, 5/8" NC X 2-1/4"	3, 5, 14
7115-022	CAP SCREW, 3/4" NC X 2-1/4"	5, 7
7342-012	CARRIAGE BOLT, 3/8" NC X 1-1/4"	14, 15
7343-003	CARRIAGE BOLT, 1/2" NC X 1-1/4"	3, 5, 14
7513-012	SET SCREW, 1/2" NC X 1"	17, 18
7513-014	SET SCREW, 1/2" NC X 1-1/4"	17, 18
7715-850	SLOTTED NUT, 3/4" NF	17, 19
7721-005	HEX NUT, 5/16" NC	12
7722-010	HEX NUT, 3/8" NC	3, 5, 9, 14, 15
7722-015	HEX NUT, 7/16" NC	3, 5, 14, 15
7723-015	HEX NUT, 1/2" NC	3, 4, 5, 7, 9, 11, 14, 17, 18

PART NUMBER PAGE REFERENCE

<u>PART NO.</u>	<u>DESCRIPTION</u>	<u>PAGE(S)</u>
7723-119	LOCK NUT, 5/8" NC HALF HEIGHT	9, 12, 14
7724-005	HEX NUT, 5/8" NC	3, 5, 9, 12, 14
7725-002	HEX NUT, 3/4" NC	5, 7
7813-015	FLAT WASHER, 1/2"	3, 4, 5, 7, 9, 11, 17
7841-015	LOCK WASHER, 5/16"	12
7842-010	LOCK WASHER, 3/8"	3, 5, 7, 9
7843-015	LOCK WASHER, 1/2"	3, 4, 5, 7, 9, 11 12, 14, 17, 18
7844-020	LOCK WASHER, 5/8"	3, 5, 9, 12, 14
7845-020	LOCK WASHER, 3/4"	5, 7
7893-004	MACHINE BUSHING, 1/2" X 10 GA NR	9, 11
7910-150	COTTER PIN	17, 19
7932-114	SQ KEY, 3/8" x 1-1/4"	3, 5, 17
7969-001	IRON RIVET, 1/4" X 1" ROUND HEAD	4
8112-001	CAP SCREW, 3/8" NC X 1-1/4" TAPERED HD	9, 10
8113-002	CAP SCREW, 1/2" NC X 1-1/2" TAPERED HD	3, 5, 9
8113-003	CAP SCREW, 1/2" NC X 1-1/4" TAPERED HD	3, 5, 9
8115-005	AXLE BOLT, 3/4" NF X 8-1/8" CROSS-DRILLED	17, 19
8722-001	HEX NUT, 3/8" NC TAPERED	9, 10
8723-001	HEX NUT, 1/2" NC TAPERED	3, 5, 9
8885-001	DISHED WASHER, 3/4" X 20 GA	17, 19

