

PARTS CATALOG

D500

ROD TILLER

Serial No. 001 to _____

revised 4/81



Tillage Tool Group

Garfield, WA
(509) 635-1321

Windom, Minn.
(507) 831-4381

New Albany, Miss.
(601) 534-9541

CAUTION

BLOCK SECURELY

Do not place yourself under any equipment suspended hydraulically, with mechanical stops, jacks or hoists, without blocking securely.

Make sure machine cannot roll.

J. E. LOVE CO. WARRANTY

The J. E. Love Company warrants that it will repair F.O.B. its factory or furnish without charge F.O.B. its factory, a similar part to replace any material in its machinery which within one year after date of retail delivery is proved to the satisfaction of the Company to have been defective at the time it was delivered. Provided that all parts claimed defective shall be returned, properly identified, to the Company's branch having jurisdiction over the territory, charges prepaid.

This warranty to repairs applies only to new and unused machinery, which after shipment from the factory of the Company, has not been altered, changed, repaired or treated in any manner whatsoever, and does not extend to equipment or implements not manufactured by the J. E. Love Company, although sold or operated with the Company's machinery.

THIS WARRANTY TO REPAIR IS THE ONLY WARRANTY EITHER EXPRESS, IMPLIED OR STATUTORY, UPON WHICH SAID MACHINERY IS SOLD. SPECIFICALLY, THE J. E. LOVE COMPANY DISCLAIMS ANY IMPLIED WARRANTY OF MERCHANTABILITY OR IMPLIED WARRANTY OF FITNESS FOR PURPOSE.

The Company's liability in connection with this transaction is expressly limited to the repair or replacement of defective parts; all other damages and warranties, statutory or otherwise, being hereby expressly waived by the purchaser.

No representative of the Company has the authority to change this warranty or this contract in any manner whatsoever, and no attempt to repair or promise to repair or improve the machinery covered by this contract by any representative of the Company shall waive any consideration of the contract or change or extend this warranty in any manner whatsoever.

The J. E. Love Company shall in no event be responsible or liable in damages for losses, delays or nonperformance caused by or due to current energy, fuel or material shortages or due to Labor Contracts beyond the control of the Company.



FEMA SEAL OF QUALITY

J. E. Love Company products carry the Farm Equipment Manufacturers Association "Seal of Quality" shown above. This seal identifies the J. E. Love Company as a manufacturer who has met the rigid manufacturing and service qualifying standards set by the Association, so is privileged to apply the "Seal of Quality" to its products.

TABLE OF CONTENTS

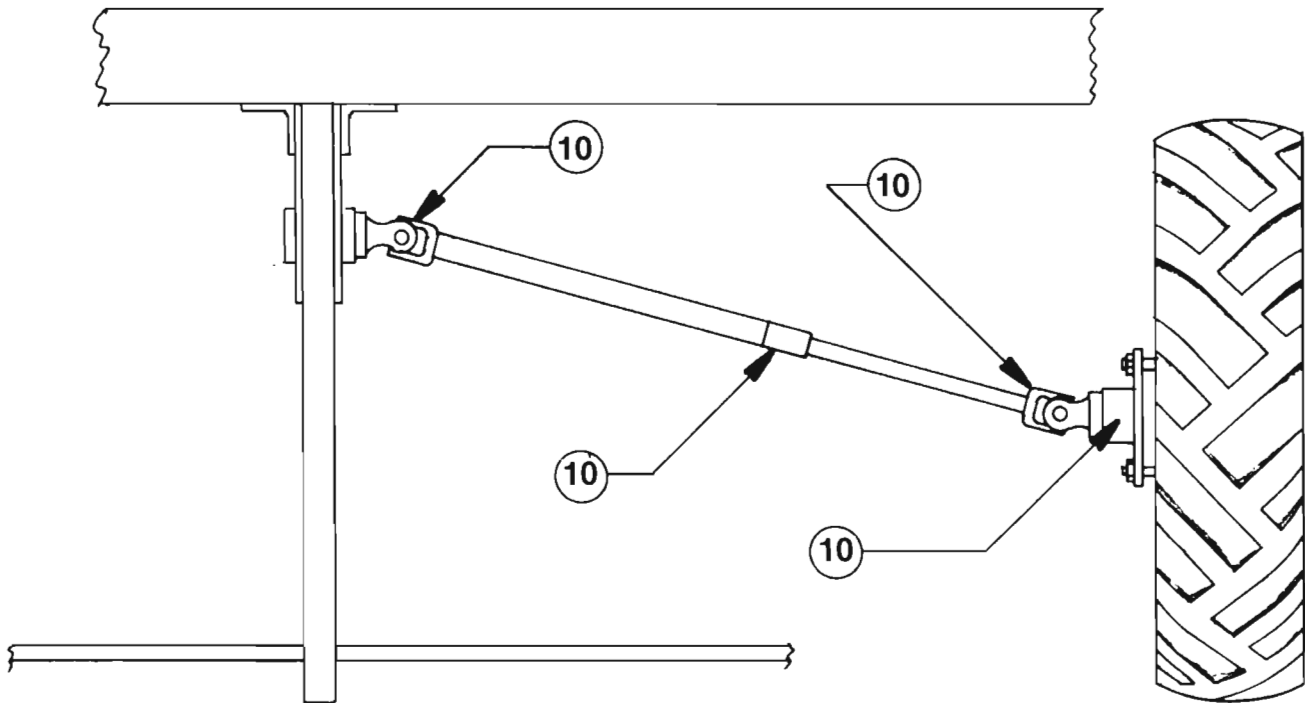
D500 Rod Tiller

Page	Item
1	Caution Warning
2	Warranty and FEMA Seal
3	Table of Contents
4	Lubrication Chart
5	Outrigger Wheel Package Parts
7	Main Frame
9	Outrigger, Hinge, Support Wheel and Stabilizer Wheel
11	Spring Trip Boot Assembly
13	Spring Trip Pendant, Drive and Shoes
15	Rigid Boot Assembly
17	Rigid Pendant, Drive and Shoes
19	Spring Trip Chisel Standard
20	Rigid Chisel Standard
21	Hub, Wheels, and Spindles
23	High Pressure Outrigger Lift and Wheel Cylinders
25	Low Pressure Outrigger Lift and Wheel Cylinders
27	Hydraulic Cylinders, Tie Rod
29	Hydraulic Cylinders, Tie Rod, Master
31	Hydraulic Cylinders, Tie Rod, Slave
33	Hydraulic Hoses and Fittings, 46'
35	Hydraulic Hoses and Fittings, 50'
37	Hydraulic Hoses and Fittings, 54' and 56'
39	Hydraulic Hoses and Fittings, Low Pressure
40	Hose Support
41	Sequence Valve
42	Decals
43	Numerical Cross Reference

Lubrication

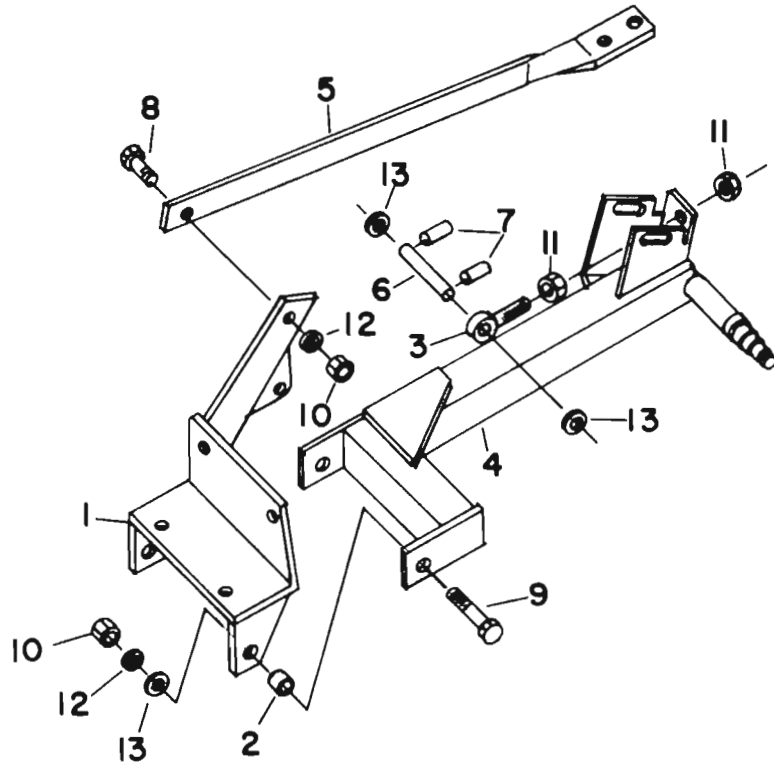
⚠ CAUTION: To avoid injury, always stop tractor, lower rod weeder, and stop tractor engine before lubricating implement.

TYPICAL GREASE LOCATIONS: The lubrication points shown below are the only areas that need lubrication on this implement. Make sure grease fittings are firmly installed and free of dirt before lubricating.



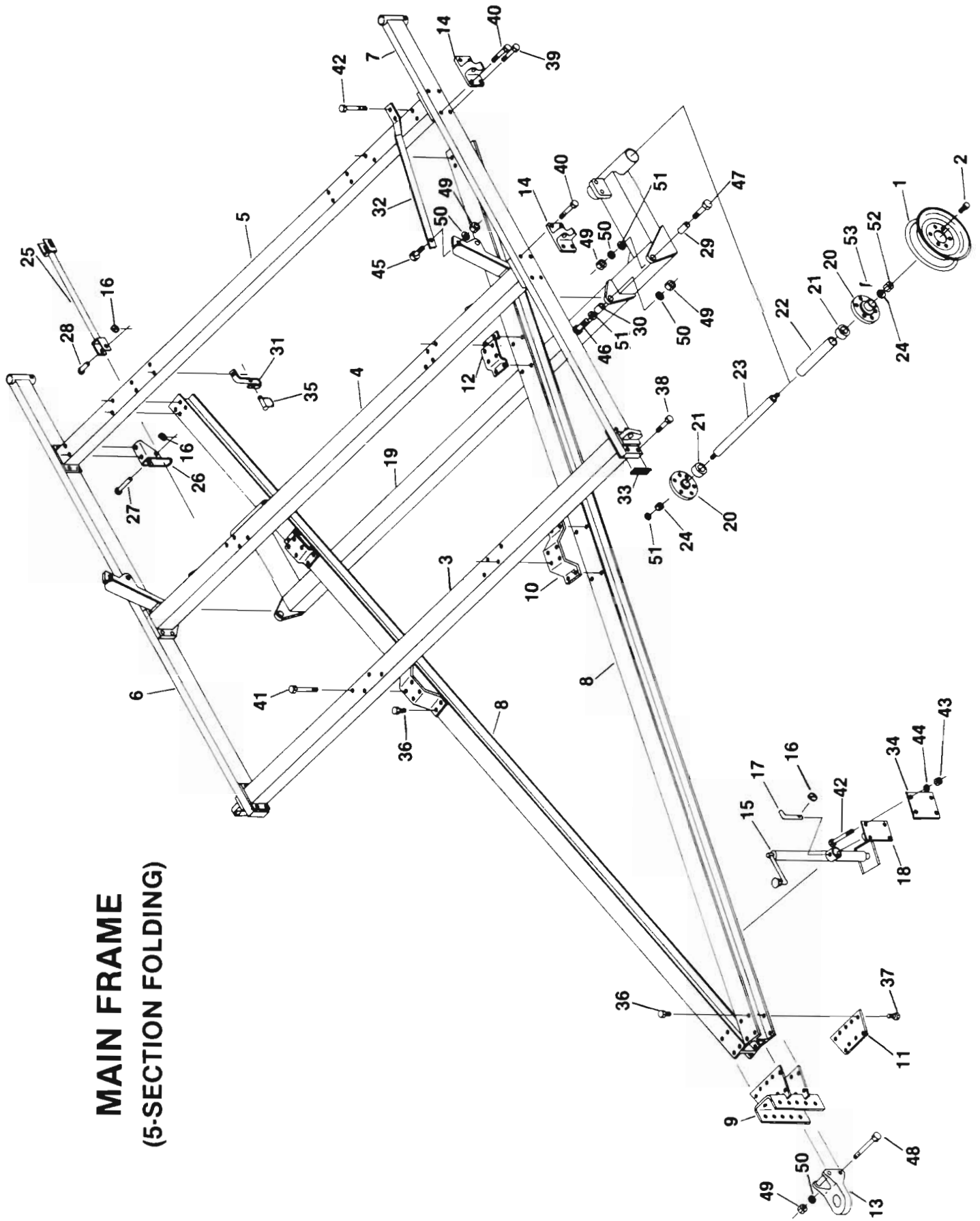
Lubricate with multi-purpose type grease at hourly intervals indicated.

OUTRIGGER WHEEL PACKAGE PARTS



KEY	PART NO.	DESCRIPTION
1	D10162	R.H. Wheel Support
	D10181	L.H. Wheel Support
2	D10163	O.R. Hinge Bushing
3	D10165	Eyebolt, 1"
4	D10164	R.H. Wheel Spindle
	D10184	L.H. Wheel Spindle
5	D10183	O.R. Support Strap
6	D10327	Outrigger Cylinder Pin
7		Spring Pin, 1/4 x 1-3/4
8		1-8 UNC x 2-1/2 Cap Screw
9		1-8 UNC x 3-1/4 Cap Screw
10		1-8 UNC Hex Nut
11		1-8 Hex Jam Nut
12		1" Lock Washer
13		1" SAE Washer

MAIN FRAME (5-SECTION FOLDING)

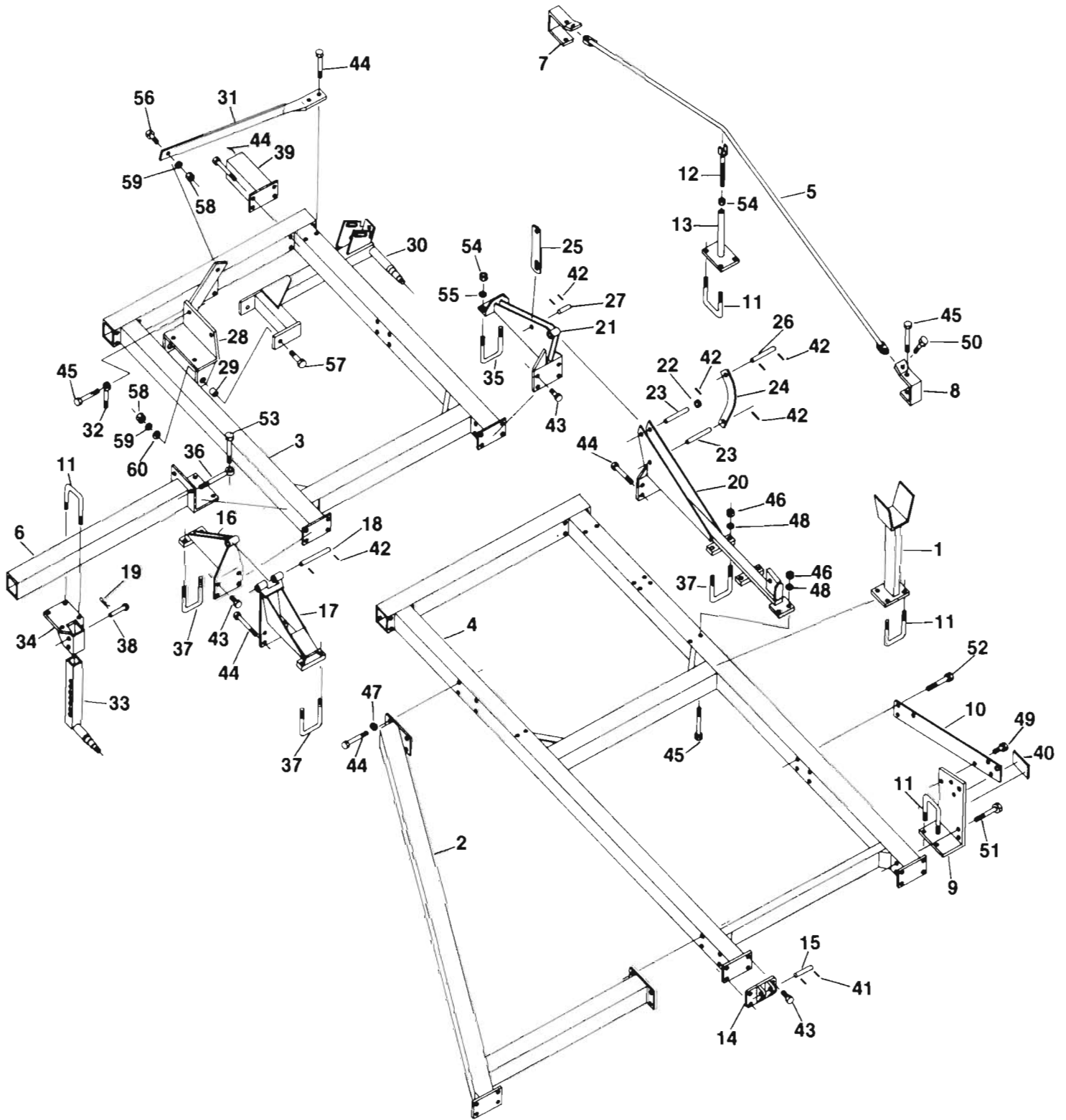


MAIN FRAME

(5-SECTION FOLDING)

KEY	PART NO.	DESCRIPTION
1	A1574	Wheel
2	B1616	Wheel Bolt
3	D10002	Main Frame Front Tube
4	D10003	Main Frame Center Tube
5	D10004	Main Frame Rear Tube
6	D10006	R. H. Main Frame End
7	D10007	L. H. Main Frame End
8	D10008	Hitch Beam
9	D10050	Hitch Bracket
10	D10051	Front Tongue Support
11	D10052	Shim
12	D10053	Center Tongue Support
13	D10078	Hitch Link
14	D10080	Outrigger Hinge
15	D10088	Jack Assembly
16	D10089	Quick-Lock Pin
17	D10090	Jack Pin
18	D10091	Jack Support
19	D10156	Axle Rockshaft, 5-Section
20	D10157	Live Axle Hub
21	D10158	Ball Bearing
22	D10159	Spacer
23	D10160	Live Axle
24	D10161	Thrust Washer
25	D10177	Lock-up Strut
26	D10178	Lock-up Anchor
27	D10179	Long Pin
28	D10180	Short Pin
29	D10223	Sleeve
30	D10225	Pivot Bushing
31	D10227	Drive Shaft Hanger
32	D10228	Main Frame Support Strap
33	D10332	Amber Reflector
34	D10382	Jack Attaching Plate
35	K3031	Snapper Pin
36		5/8-11 UNC x 1-1/2 Cap Screw
37		5/8-11 UNC x 1-3/4 Cap Screw
38		5/8-11 UNC x 3-1/2 Cap Screw
39		5/8-11 UNC x 4 Cap Screw
40		5/8-11 UNC x 4-1/2 Cap Screw
41		5/8-11 UNC x 5-1/2 Cap Screw
42		5/8-11 UNC x 6 Cap Screw
43		5/8-11 UNC Hex Nut
44		5/8 Lock Washer
45		1-8 UNC x 2-1/2 Cap Screw
46		1-8 UNC x 3-1/4 Cap Screw
47		1-8 UNC x 3-3/4 Cap Screw
48		1-8 UNC x 7 Cap Screw
49		1-8 UNC Hex Nut
50		1" Lock Washer
51		1" SAE Washer
52		1-14 UNS-2B Hex Slotted Nut
53		7/32 x 2-1/4 Cotter Pin

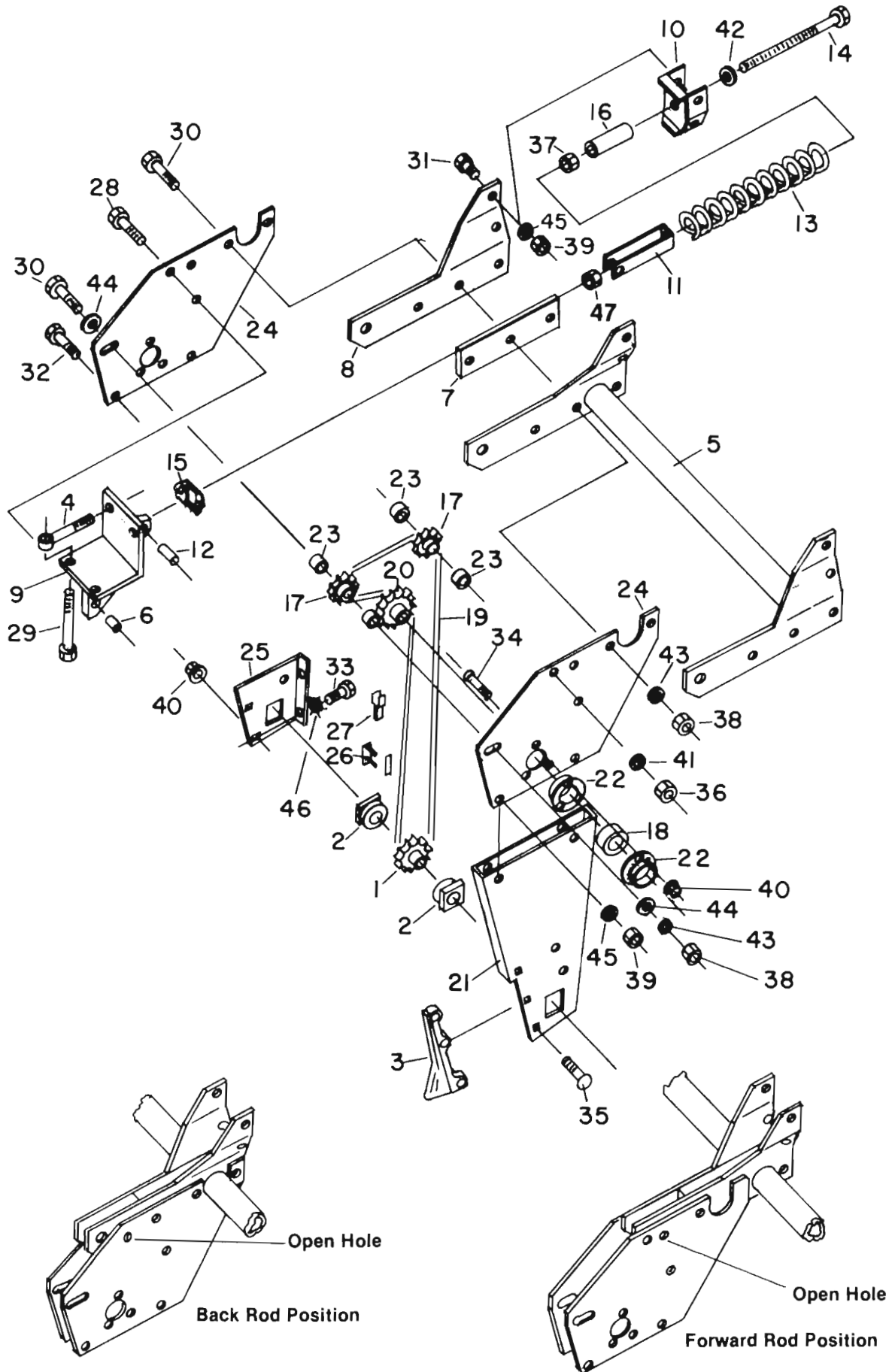
OUTRIGGER, HINGE, SUPPORT WHEEL SPINDLE AND STABILIZER WHEEL SPINDLE



OUTRIGGER, HINGE, SUPPORT WHEEL & STABILIZER WHEEL (5-SECTION FOLDING)

KEY	PART NO.	DESCRIPTION	KEY	PART NO.	DESCRIPTION
1	D10001	Stop Assembly	40	D10331	Red Reflector
2	D10016	"A" Frame	41		Spring Pin, 5/16 x 1-3/4
3	D10018	Outrigger, 6'	42		Spring Pin, 3/8 x 1-7/8
	D10019	Outrigger, 8'	43		5/8-11 UNC x 2 Cap Screw
4	D10020	Outrigger, 10'	44		5/8-11 UNC x 5-1/2 Cap Screw
	D10021	Outrigger, 12'	45		5/8-11 UNC x 6 Cap Screw
5	D10030	10' Truss Rod	46		5/8-11 UNC Hex Nut
	D10148	12' Truss Rod	47		5/8 Flat Washer
6	D10038	Stabilizer Wheel Support	48		5/8 Lock Washer
7	D10054	Anchor, 4 x 4	49		3/4-10 UNC x 2 Cap Screw
8	D10055	Anchor, 2 x 4	50		3/4-10 UNC x 2-1/2 Cap Screw
9	D10061	R. H. Angle	51		3/4-10 UNC x 5-1/2 Cap Screw
	D10062	L. H. Angle	52		3/4-10 UNC x 6 Cap Screw
10	D10063	Outrigger Lift Strap	53		3/4-10 UNC x 6-1/2 Cap Screw
11	D10068	U-Bolt	54		3/4-10 UNC Hex Nut
12	D10070	Truss Rod Support	55		3/4 Lock Washer
13	D10071	Truss Rod Stand	56		1-8 UNC x 2-1/2 Cap Screw
14	D10079	Main frame Hinge	57		1-8 UNC x 3-1/4 Cap Screw
15	D10133	Hinge Pin	58		1-8 UNC Hex Nut
16	D10134	Front Outer Hinge	59		1" Lock Washer
17	D10135	Front Inside Hinge	60		1" SAE Washer
18	D10136	Front Hinge Pin			
19	D10137	Spring Locking Pin			
20	D10147	Rear Inside Hinge			
21	D10149	Rear Outer Hinge			
22	D10150	Spacer			
23	D10151	Rear Hinge Pin			
24	D10152	Curved Link			
25	D10153	Lift Link			
26	D10154	Ram Pivot Pin			
27	D10155	Lift Link Pin			
28	D10162	R. H. Wheel Support			
	D10181	L. H. Wheel Support			
29	D10163	Outrigger Hinge Bushing			
30	D10164	R. H. Wheel Spindle			
	D10184	L. H. Wheel Spindle			
31	D10183	Outrigger Support Strap			
32	D10185	Eye Bolt, 5/8"			
33	D10187	Stabilizer Wheel Spindle			
34	D10188	Stabilizer Wheel Support			
35	D10189	U-Bolt, 3/4"			
36	D10190	Eye Bolt, 3/4"			
37	D10191	U-Bolt, 5/8"			
38	D10192	Stabilizer Wheel Pin			
39	D10193	7" Stub Member			
	D10194	11" Stub Member			

SPRING TRIP BOOT ASSEMBLY

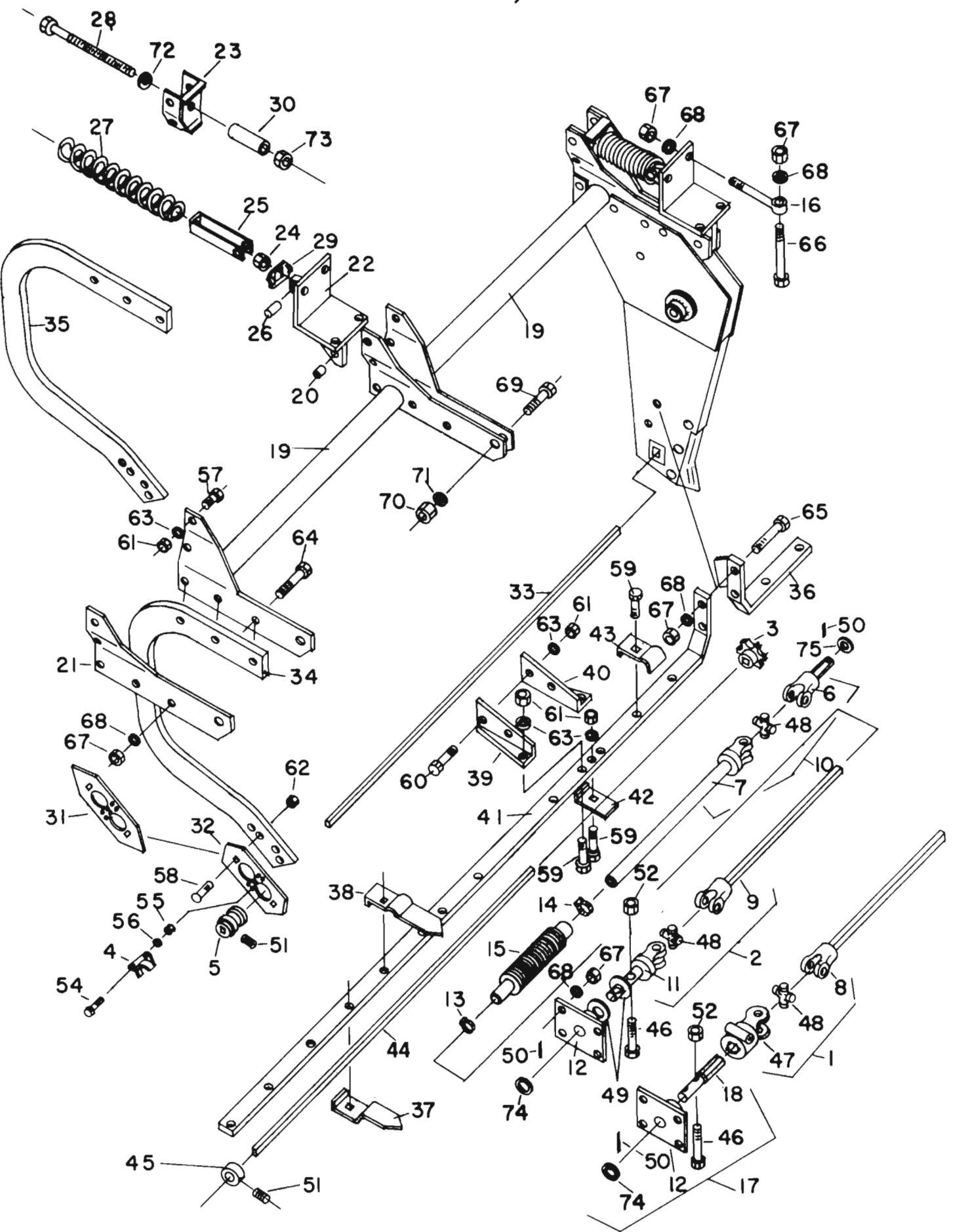


SPRING TRIP BOOT ASSEMBLY

(5 SECTION FOLDING)

KEY	PART NO.	DESCRIPTION
1	D10072	Lower Sprocket, 1"
	D10075	Lower Sprocket, 7/8"
2	D10073	Bearing
3	D10081	Boot Point
4	D10185	Eye Bolt, 5/8"
5	D10206	36" Rockshaft
	D10208	42" Rockshaft
	D10209	48" Rockshaft
6	D10211	Trunion
7	D10212	Boot Support
8	D10213	R.H. Rockshaft Strap
	D10214	L.H. Rockshaft Strap
9	D10217	Anchor Support
10	D10218	Spring Mounting Bracket
11	D10220	U-Strap
12	D10229	Pin
13	D10230	Compression Spring
14	D10231	Bolt
15	D10232	Washer
16	D10233	Spacer
17	D10235	Idler Sprocket
18	D10236	Bearing
19	D10237	Spring Trip Boot Chain Assembly
20	D10238	Sprocket, 16-1/2 Tooth
21	D10239	Spring Trip Boot
22	D10240	Flangette
23	D10241	Spacer
24	D10242	Spring Trip Boot Top Plate
25	D10243	Spring Trip Boot Lower Side
26	D10292	Connecting Link
27	D10293	Offset Link
28		3/4-10 UNC x 3 Cap Screw
29		5/8-11 UNC x 6 Cap Screw
30		5/8-11 UNC x 3 Cap Screw
31		1/2-13 UNC x 1-1/4 Cap Screw
32		1/2-13 UNC x 2-3/4 Cap Screw
33		3/8-16 UNC x 5/8 Cap Screw
34		3/8-16 UNC x 1 Carriage Screw
35		3/8-16 UNC x 2 Carriage Screw
36		3/4-10 UNC Hex Nut
37		3/4-10 UNC Hex Jam Nut
38		5/8-11 UNC Hex Nut
39		1/2-13 UNC Hex Nut
40		3/8-16 UNC Whiz Nut
41		3/4 Lock Washer
42		3/4 Standard Flat Washer
43		5/8 Lock Washer
44		5/8 Standard Flat Washer
45		1/2 Lock Washer
46		3/8 External Tooth Lock Washer
47	D10219	Locknut

SPRING TRIP PENDANT, DRIVES & SHOES

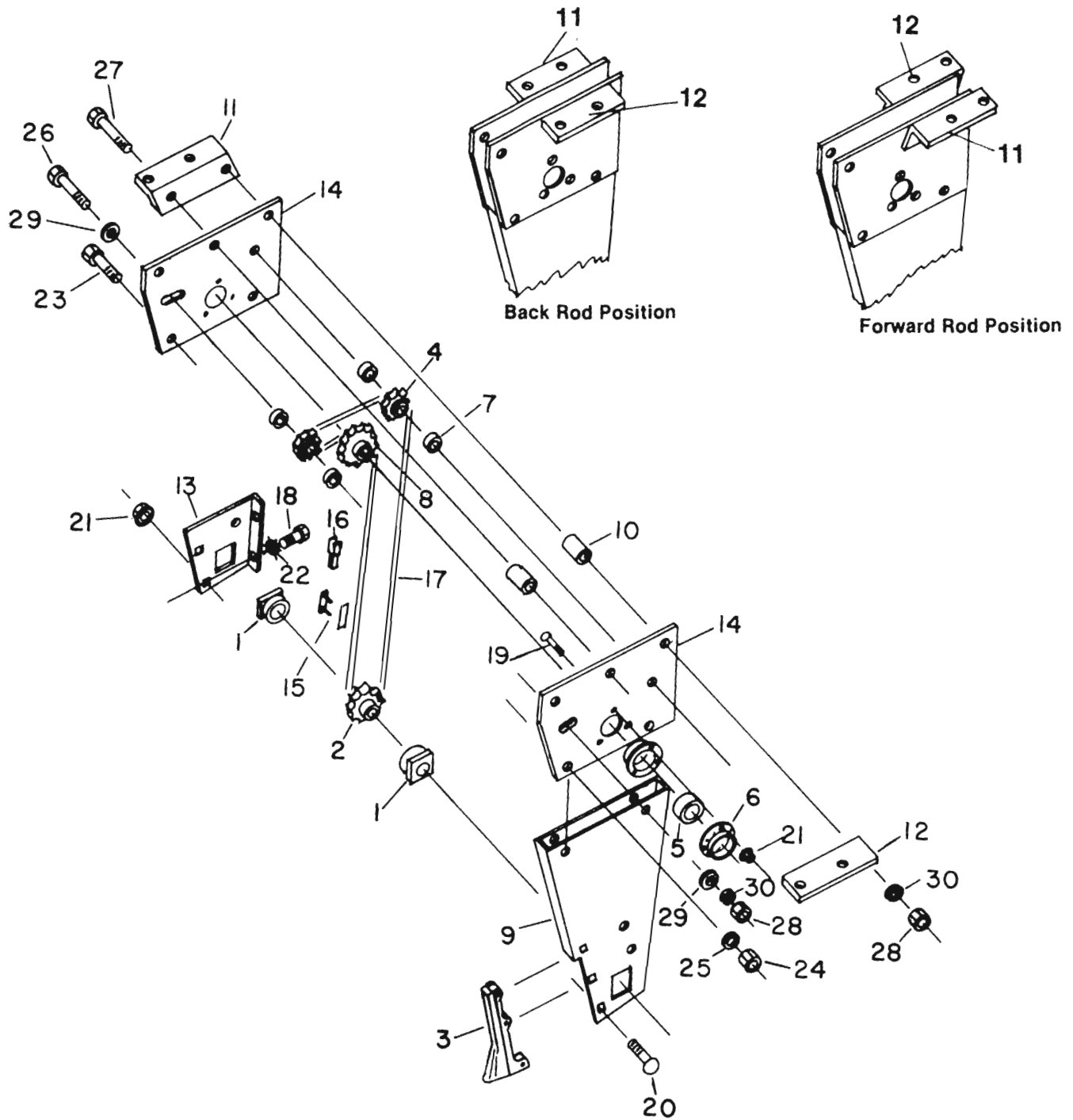


SPRING TRIP PENDANT, DRIVES & SHOES

(5-SECTION FOLDING)

KEY	PART NO.	DESCRIPTION	KEY	PART NO.	DESCRIPTION
1	D10022	Joint Assembly, Q. D. to Rectangular Shaft	40	D10266	Tiller Bar Mounting Angle, L. H.
2	D10023	30" Joint Assembly	41	D10269	R. H. Tiller Bar (60-1/2")
	D100373	48" Joint Assembly		D10273	R. H. Tiller Bar (108-1/2")
	D10374	71" Joint Assembly		D10306	R. H. Tiller Bar (96-1/2")
	D10385	40" Joint Assembly		D10308	R. H. Tiller Bar (84-1/2")
3	D10072	Lower Sprocket, 1"		D10309	R. H. Tiller Bar (87-1/2")
	D10075	Lower Sprocket, 7/8"		D10270	L. H. Tiller Bar (60-1/2")
4	D10074	Bearing Block		D10274	L. H. Tiller Bar (108-1/2")
5	D10077	1" Square Spool		D10305	L. H. Tiller Bar (84-1/2")
6	D10112	Hex Shaft and Yoke		D10307	L. H. Tiller Bar (45-1/2")
7	D10114	Yoke with Tube and Rectangular Sleeve	42	D10311	L. H. Tiller Bar (96-1/2")
8	D10117	Yoke and Rectangular Shaft, 56"	43	D10276	Bottom Clip
9	D10370	Yoke and Rectangular Shaft, 30"	44	D10277	Top Clip
	D10371	Yoke and Rectangular Shaft, 48"		D10278	Rod, 7/8 x 117"
	D10372	Yoke and Rectangular Shaft, 71"		D10313	Rod, 7/8 x 81"
	D10384	Yoke and Rectangular Shaft, 40"		D10314	Rod, 7/8 x 105"
10	D10119	Joint Assembly, Boot Input		D10316	Rod, 7/8 x 132"
11	D10120	Yoke and Shear Pin Shaft		D10317	Rod, 7/8 x 144"
12	D10122	Shear Pin Drive Plate		D10319	Rod, 7/8 x 156"
13	D10143	Hose Clamp	45	D10355	Set Collar
14	D10144	Hose Clamp	46	D10379	Shear Bolt and Nut
15	D10145	Rubber Boot		D10464	Box of 10 Shear Bolts and Nuts
16	D10185	Eye Bolt, 5/8"	47	R812	Quick Disconnect Yoke
17	D10204	Power Shaft Assembly	48	R816	Cross Kit
18	D10205	Splined Shaft	49	R4300SW	Washer
19	D10206	36" Rockshaft	50		Spring Pin, 1/4 x 2
	D10208	42" Rockshaft	51		3/8-16 UNC x 1/2 Hex Socket Set Screw
	D10209	48" Rockshaft	52		5/16-18 UNC Hex Lock Nut
20	D10211	Trunion	54		3/8-16 UNC x 1-1/4 Cap Screw
21	D10213	R. H. Rockshaft Strap	55		3/8-16 UNC Hex Nut
	D10214	L. H. Rockshaft Strap	56		3/8 Lock Washer
22	D10217	Anchor Support	57		1/2-13 UNC x 1-1/4 Cap Screw
23	D10218	Spring Mounting Bracket	58		1/2-13 UNC x 1-3/4 Grade 5 Carriage Screw
24	D10219	Locknut	59		1/2-13 UNC x 1-3/4 Cap Screw
25	D10220	U-Strap	60		1/2-13 UNC x 2-1/2 Cap Screw
26	D10229	Pin	61		1/2-13 UNC Hex Nut
27	D10230	Compression Spring	62		1/2-13 UNC Hex Self Locking Nut
28	D10231	Bolt	63		1/2 Lock Washer
29	D10232	Washer	64		5/8-11 UNC x 2-1/2 Cap Screw
30	D10233	Spacer	65		5/8-11 UNC x 3-3/4 Cap Screw
31	D10245	Pointed Shoe	66		5/8-11 UNC x 6 Cap Screw
32	D10248	Stub Point Shoe	67		5/8-11 UNC Hex Nut
33	D10254	Rod, 1 x 81"	68		5/8 Lock Washer
	D10255	Rod, 1 x 117"	69		3/4-11 UNC x 2-1/2, Rear Position
	D10282	Rod, 1 x 156"			3/4-10 UNC x 3, Front Position
	D10320	Rod, 1 x 105"	70		3/4-10 UNC Hex Nut
	D10322	Rod, 1 x 144"	71		3/4 Lock Washer
	D10324	Rod, 1 x 132"	72		3/4 Flat Washer
34	D10256	Short Pendant	73		3/4-10 UNC Hex Jam Nut
35	D10257	Long Pendant	74		1-1/4 SAE Washer
36	D10259	L. H. Tiller Bar (12-1/2")	75		Machinery Bushing, 0.060 x 1-5/32 x 1-3/4
	D10258	R. H. Tiller Bar (12-1/2")			
37	D10263	Bottom Chisel			
38	D10264	Top Chisel			
39	D10265	Tiller Bar Mounting Angle, R. H.			

RIGID BOOT ASSEMBLY

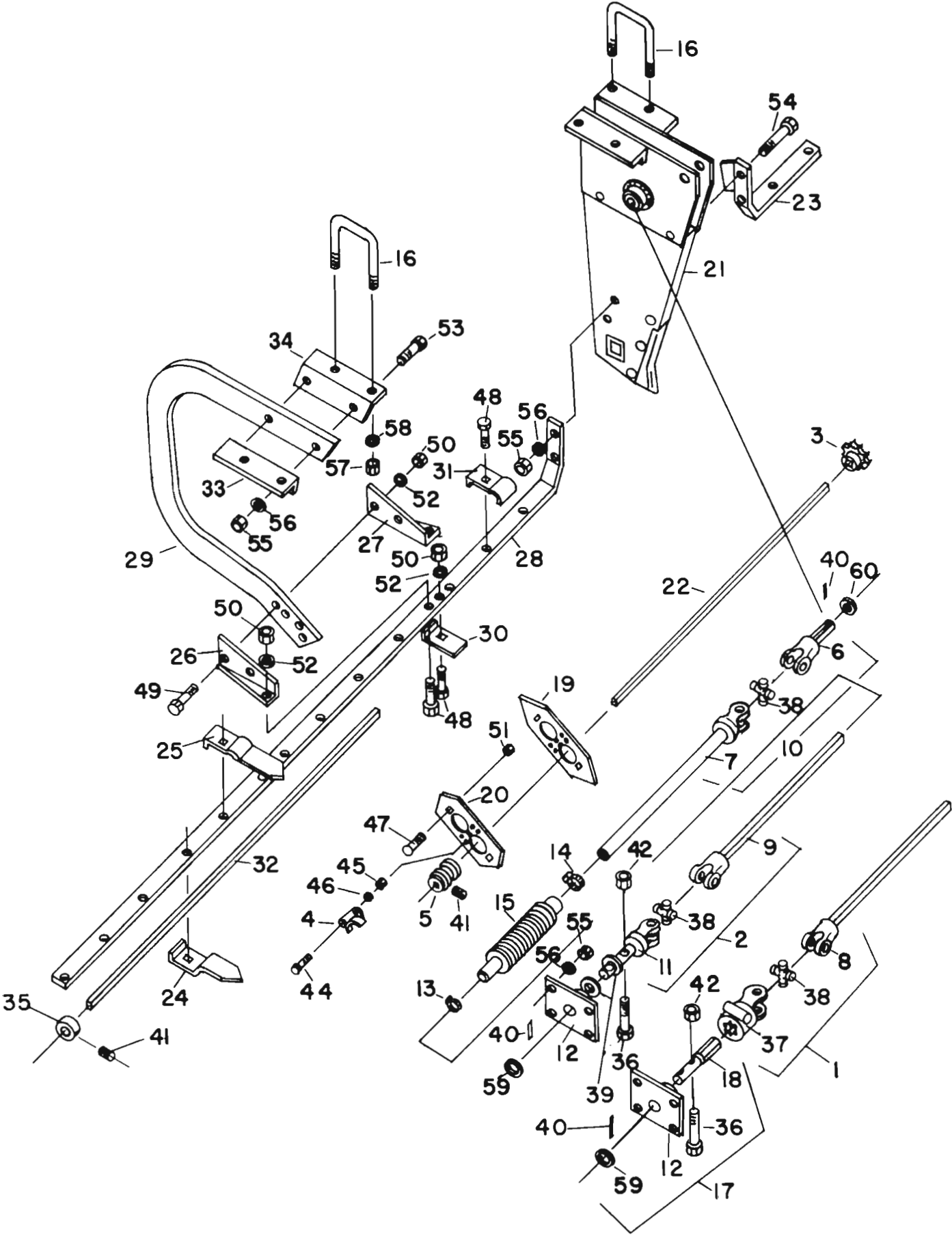


RIGID BOOT ASSEMBLY

(5-SECTION FOLDING)

KEY	PART NO.	DESCRIPTION
1	D10073	Bearing
2	D10075	Lower Sprocket, 7/8"
	D10072	Lower Sprocket, 1"
3	D10081	Boot Point
4	D10235	Idler Sprocket
5	D10236	Bearing
6	D10240	Flangette
7	D10241	Spacer
8	D10251	Sprocket, 12-1/2 Teeth
9	D10252	Rigid Boot
10	D10253	Spacer
11	D10286	R. H. Angle
12	D10287	L. H. Angle
13	D10288	Rigid Lower Side
14	D10289	Rigid Boot Top Plate
15	D10292	Connecting Link
16	D10293	Offset Link
17	D10329	Rigid Boot Chain Assembly
18		3/8-16 UNC x 5/8 Cap Screw
19		3/8-16 UNC x 1 Carriage Screw
20		3/8-16 UNC x 2 Carriage Screw
21		3/8-16 UNC Whiz Nut
22		3/8 External Tooth Lock Washer
23		1/2-13 UNC x 2-3/4 Cap Screw
24		1/2-13 UNC Hex Nut
25		1/2 Lock Washer
26		5/8-11 UNC x 3 Cap Screw
27		5/8-11 UNC x 4 Cap Screw
28		5/8-11 UNC Hex Nut
29		5/8 Flat Washer
30		5/8 Lock Washer

RIGID PENDANT, DRIVES & SHOES



RIGID PENDANT, DRIVES & SHOES

(5-SECTION FOLDING)

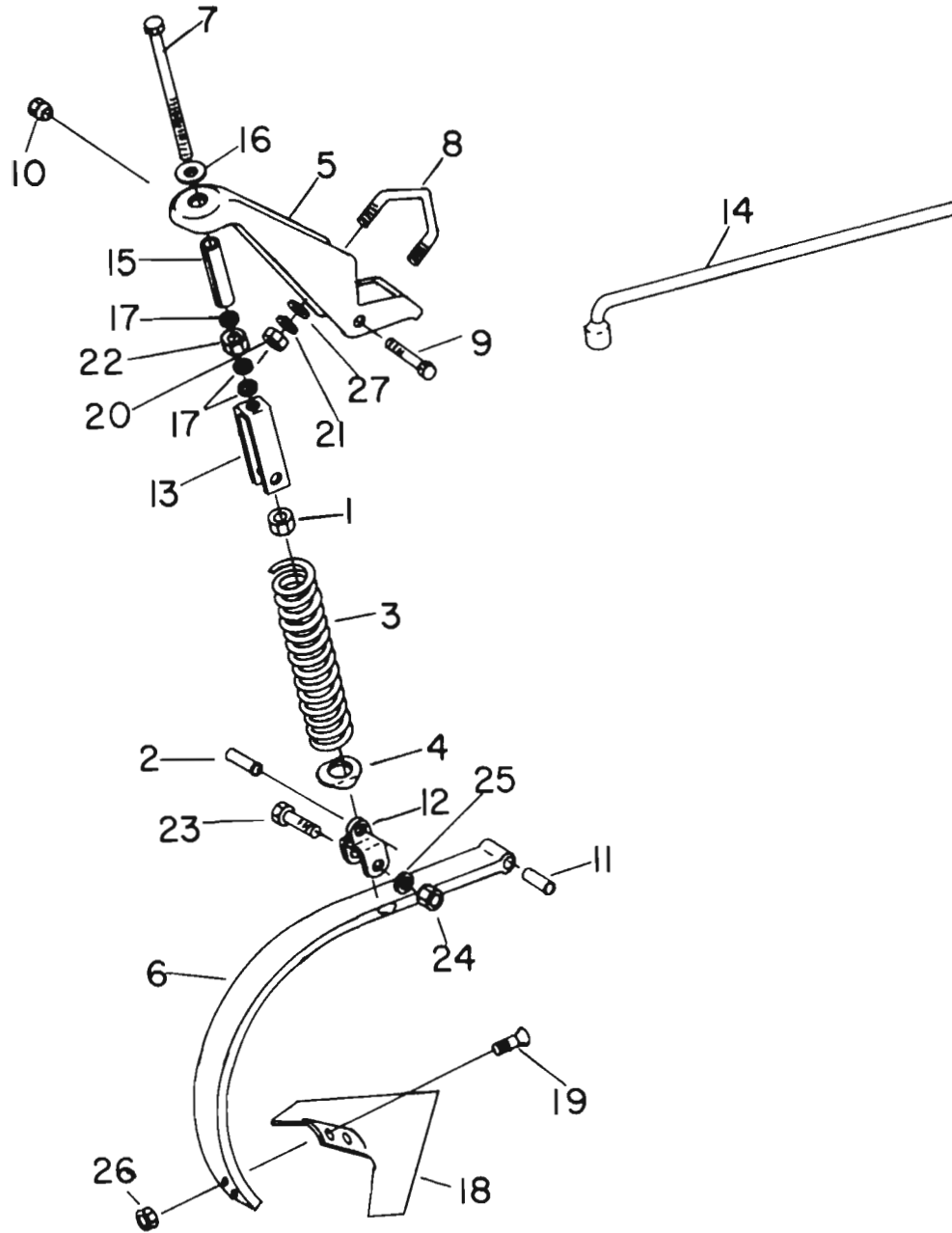
KEY PART NO. DESCRIPTION

1	D10022	Joint Assy., Q. D. to Rectangular Shaft
2	D10023	30" Joint Assembly
	D10373	48" Joint Assembly
	D10374	71" Joint Assembly
	D10385	40" Joint Assembly
3	D10072	Lower Sprocket, 1"
	D10075	Lower Sprocket, 7/8"
4	D10074	Bearing Block
5	D10077	1" Square Spool
6	D10112	Hex Shaft & Yoke
7	D10114	Yoke with Tube and Rectangular Sleeve
8	D10117	Yoke and Rectangular Shaft, 56"
9	D10370	Yoke and Rectangular Shaft, 30"
	D10371	Yoke and Rectangular Shaft, 48"
	D10372	Yoke and Rectangular Shaft, 71"
	D10384	Yoke and Rectangular Shaft, 40"
10	D10119	Joint Assembly Boot Input
11	D10120	Yoke and Shear Pin Shaft
12	D10122	Shear Pin Drive Plate
13	D10143	Hose Clamp
14	D10144	Hose Clamp
15	D10145	Rubber Boot
16	D10189	U-Bolt, 3/4
17	D10204	Power Shaft Assembly
18	D10205	Splined Shaft
19	D10245	Pointed Shoe
20	D10248	Stub Point Shoe
21	D10250	R. H. Rigid Boot Assembly
22	D10254	Rod, 1" x 81"
	D10255	Rod, 1" x 117"
	D10282	Rod, 1" x 156"
	D10320	Rod, 1" x 105"
	D10322	Rod, 1" x 144"
	D10324	Rod, 1" x 132"
23	D10259	L. H. Tiller Bar (12-1/2")
	D10258	R. H. Tiller Bar (12-1/2")
24	D10263	Bottom Chisel
25	D10264	Top Chisel
26	D10265	Tiller Bar Mounting Angle, R. H.
27	D10266	Tiller Bar Mounting Angle, L. H.
28	D10269	R. H. Tiller Bar (60-1/2")
	D10273	R. H. Tiller Bar (108-1/2")
	D10306	R. H. Tiller Bar (96-1/2")
	D10308	R. H. Tiller Bar (84-1/2")
	D10309	R. H. Tiller Bar (87-1/2")
	D10270	L. H. Tiller Bar (60-1/2")
	D10274	L. H. Tiller Bar (108-1/2")
	D10305	L. H. Tiller Bar (84-1/2")
	D10307	L. H. Tiller Bar (45-1/2")
	D10311	L. H. Tiller Bar (96-1/2")
29	D10275	Rigid Pendant
30	D10276	Bottom Clip
31	D10277	Top Clip

KEY PART NO. DESCRIPTION

32	D10278	Rod, 7/8" x 117"
	D10313	Rod, 7/8" x 81"
	D10314	Rod, 7/8" x 105"
	D10316	Rod, 7/8" x 132"
	D10317	Rod, 7/8" x 144"
	D10319	Rod, 7/8" x 156"
33	D10286	R. H. Angle
	D10360	Extended Pendant Mount Angle, R. H.
34	D10287	L. H. Angle
	D10359	Extended Pendant Mount Angle, L. H.
35	D10355	Set Collar
36	D10379	Shear Bolt and Nut
	D10464	Box of 10 Shear Bolts and Nuts
37	R812	Quick Disconnect Yoke
38	R816	Cross Kit
39	R4300SW	Washer
40		Spring Pin, 1/4 x 2
41		3/8-16 UNC x 1/2 Hex Socket Set Screw
42		5/16-18 UNC Hex Lock Nut
44		3/8-16 UNC x 1-1/4 Cap Screw
45		3/8-16 UNC Hex Nut
46		3/8 Lock Washer
47		1/2-13 UNC x 1-3/4 Grade 5 Carriage Screw
48		1/2-13 UNC x 1-3/4 Cap Screw
49		1/2-13 UNC x 2-1/2 Cap Screw
50		1/2-13 UNC Hex Nut
51		1/2-13 UNC Hex Self Lock Nut
52		1/2 Lock Washer
53		5/8-11 UNC x 2-3/4 Cap Screw
54		5/8-11 UNC x 3-3/4 Cap Screw
55		5/8-11 UNC Hex Nut
56		5/8 Lock Washer
57		3/4-10 UNC Hex Nut
58		3/4 Lock Washer
59		1-1/4 SAE Washer
60		Machinery Bushing, 0.060 x 1-5/32 x 1-3/4

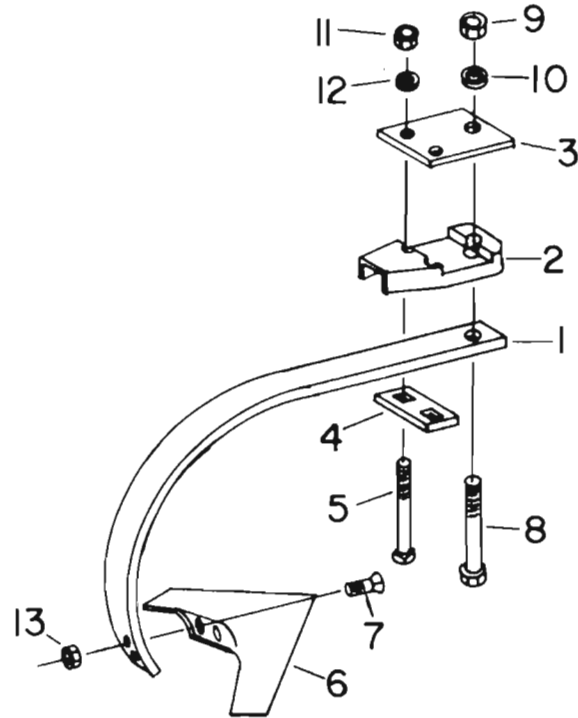
SPRING TRIP CHISEL STANDARD



SPRING TRIP CHISEL STANDARD

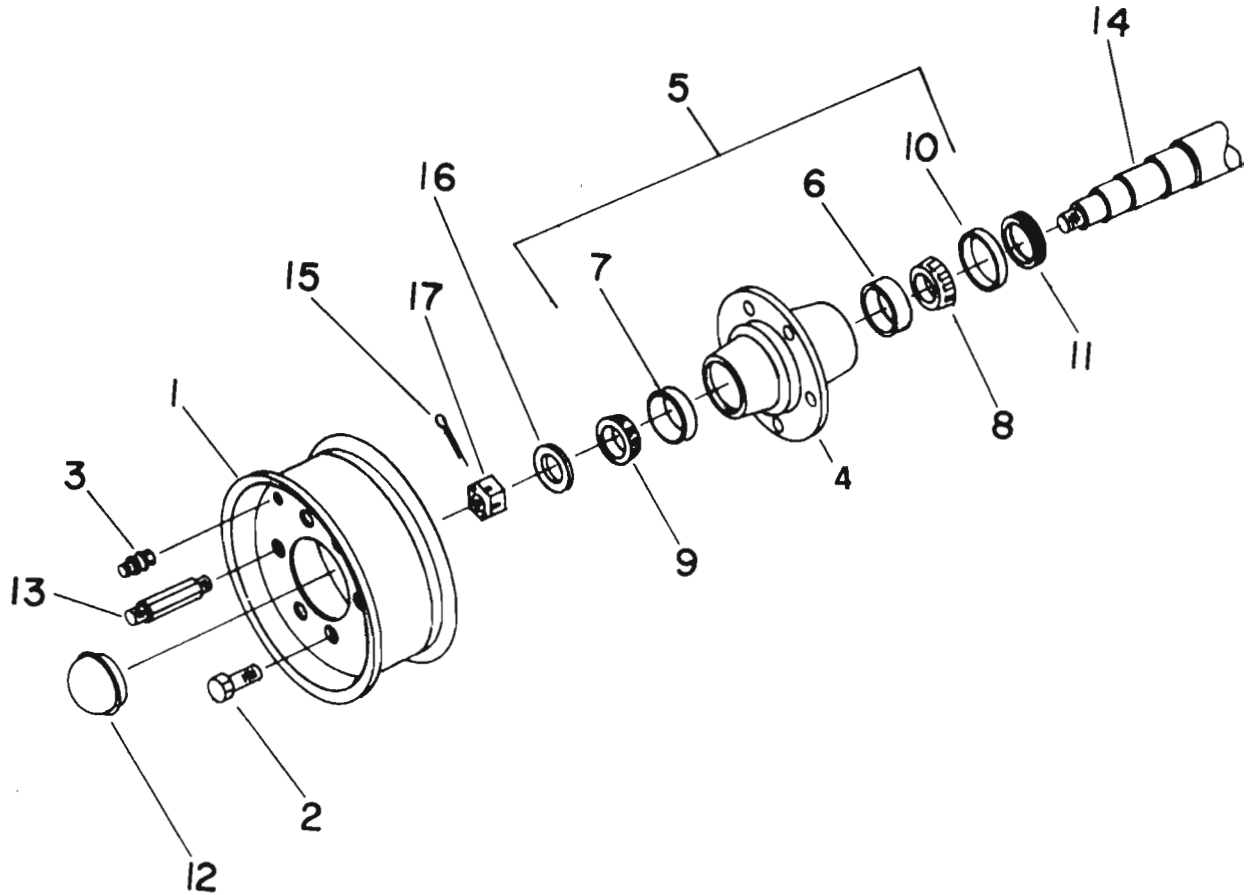
KEY	PART NO.	DESCRIPTION
1	D10219	3/4 Lock Nut
2	D10229	Pin
3	D10230	Compression Spring
4	D10232	Washer
5	D10337	Main Bracket
6	D10338	High Arc Spring Standard
7	D10339	Adjustment Bolt
8	D10340	U-Bolt, 7/8"
9	D10341	Pivot Bolt
10	D10342	Tapered Nut
11	D10343	Pivot Bushing
12	D10344	Clamp
13	D10345	U-Strap
14	D10350	Wrench
15	D10362	Sleeve
16	D10363	Washer
17	D10364	Bushing
18	K1029	16" Sweep
19	L320	Plow Bolt, 7/16
20		7/8-9 UNC Hex Nut
21		7/8 Lock Washer
22		3/4-10 UNC Hex Nut
23		5/8-11 UNC x 3-3/4 Cap Screw
24		5/8-11 UNC Hex Nut
25		5/8 Lock Washer
26		7/16-20 UNF Hex Nut
27		Washer, 7/8 I.D. x 1-3/4 O.D. x 0.134

RIGID CHISEL STANDARD



KEY	PART NO.	DESCRIPTION
1	D10351	Flat Spring Standard
2	D10346	Clamp
3	D10347	Cap
4	D10348	Strap
5	D10349	Carriage Bolt
6	K1029	16" Sweep
7	L320	Plow Bolt, 7/16"
8		3/4-10 UNC x 7-1/2 Cap Screw
9		3/4-10 UNC Hex Nut
10		3/4 Lock Washer
11		5/8-11 UNC Hex Nut
12		5/8 Lock Washer
13		7/16-20 UNF Hex Nut

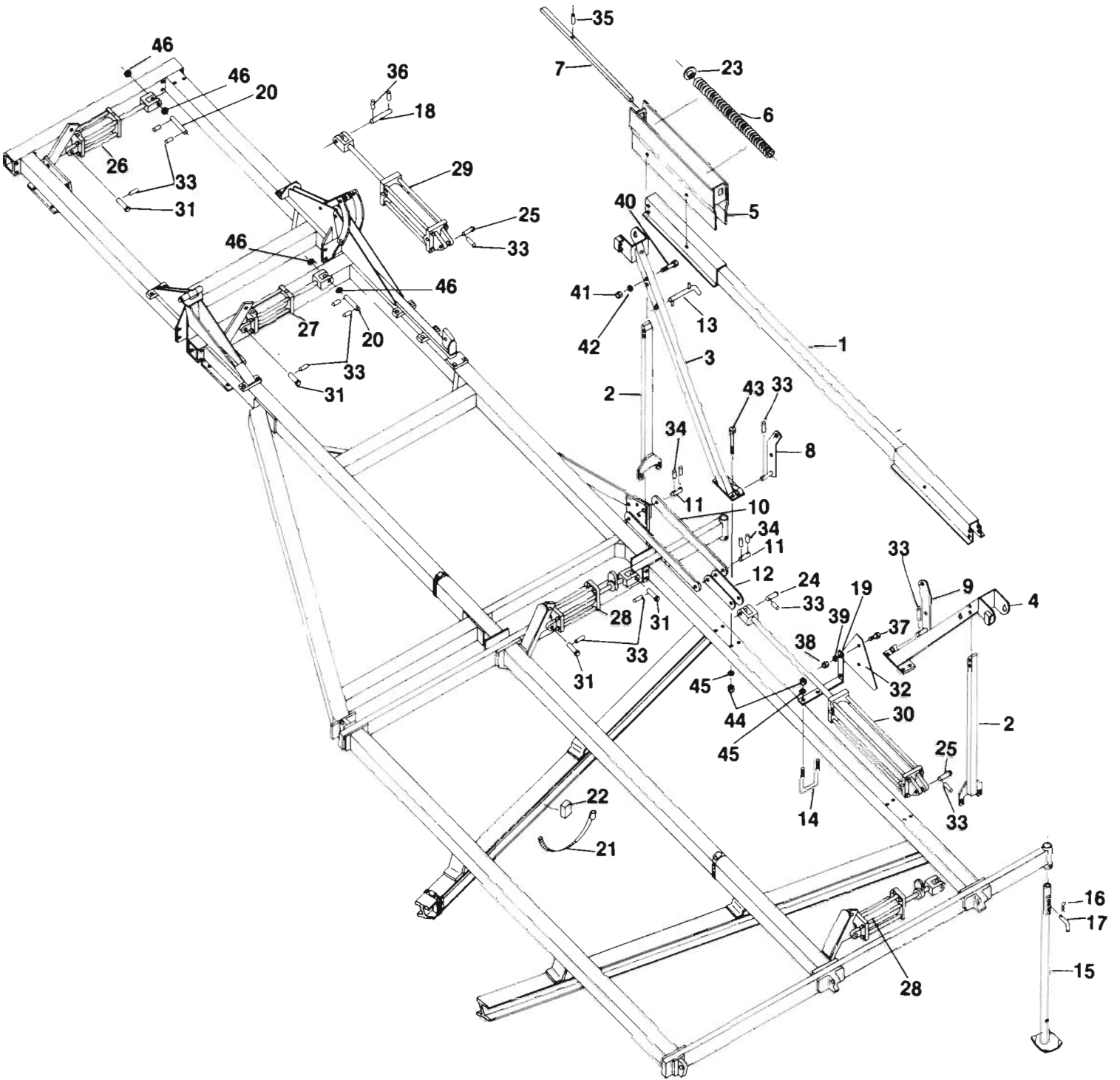
HUB, WHEELS, AND SPINDLES



KEY PART NO. DESCRIPTION

KEY	PART NO.	DESCRIPTION
1	A1574	Wheel, 16 x 5.50
	D10110	Wheel, 15 x 5
	K3073	Wheel, 15 x 10
2	B1616	Wheel Bolt
3	D10092	Valve Stem
4		Hub Only, Sub. D10124
5	D10124	Hub with Cups & Sleeve
6	D10125	Inner Cup
7	D10126	Outer Cup
8	D10127	Inner Bearing
9	D10128	Outer Bearing
10	D10129	Wear Sleeve
11	D10130	Seal
12	D10131	Hub Cap
13	D10142	Long Wheel Bolt
	D10146	Short Wheel Bolt
14	D10164	R.H. Wheel Spindle
	D10176	Spindle
	D10184	L.H. Wheel Spindle
15		5/32 x 1-1/4 Cotter Pin
16	D10369	"Special Hard" Washer
17		7/8-14 UNF Slotted Hex Nut

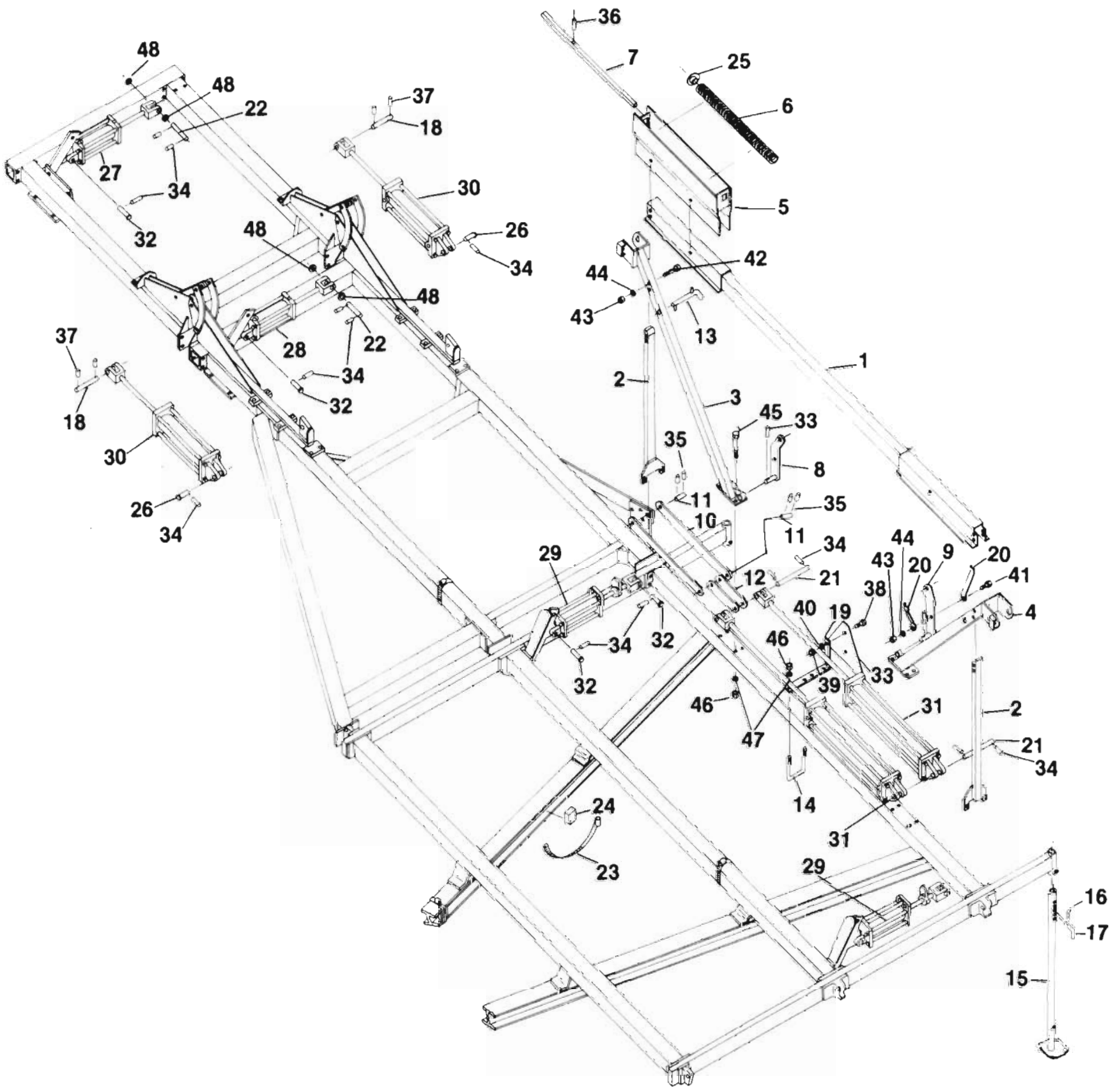
HIGH PRESSURE OUTRIGGER LIFT & WHEEL CYLINDERS (5-SECTION FOLDING)



HIGH PRESSURE OUTRIGGER LIFT AND WHEEL CYLINDERS (5-SECTION FOLDING)

KEY	PART NO.	DESCRIPTION
1	D10015	Outrigger Stop Member
2	D10045	Outrigger Support
3	D10046	R. H. Outrigger Stop
4	D10047	L. H. Outrigger Stop
5	D10056	Spring Support
6	D10057	Compression Spring
7	D10058	Rod Push
8	D10059	R. H. Lift Arm
9	D10060	L. H. Lift Arm
10	D10064	Lift Strap
11	D10065	Pin
12	D10066	Link Lift
13	D10067	Pin Assembly
14	D10068	U-Bolt
15	D10087	Rear Stand
16	D10137	Spring Locking Pin
17	D10139	Rear Stand Pin
18	D10154	Ram Pivot Pin
19	D10226	SMV Emblem Bracket
20	D10327	Outrigger Cylinder Pin
21	D10328	Hose Clamp
22	D10333	Hydraulic Hose Block
23	D10394	Spring Retainer
24	F10129	Clevis Pin
25	F10150	Clevis Pin
26	F10200	3 x 8 Cylinder
27	F10201	3-1/4 x 8 Cylinder
28	F10204	3-1/2 x 8 Cylinder
29	F10208	5 x 16 Cylinder
30	F10209	5 x 32 Cylinder
31	K1678	Clevis Pin
32	K2189	Slow Moving Vehicle Emblem
33		1/4 x 1-3/4 Spring Pin
34		5/16 x 2 Spring Pin
35		5/16 x 2-1/2 Spring Pin
36		3/8 x 1-7/8 Spring Pin
37		1/4-20 UNC x 3/4 Cap Screw
38		1/4-20 UNC Hex Nut
39		1/4 Lock Washer
40		1/2-13 UNC x 3-1/2 Cap Screw
41		1/2-13 UNC Hex Nut
42		1/2 Lock Washer
43		5/8-11 UNC x 5-1/2 Cap Screw
44		5/8-11 UNC Hex Nut
45		5/8 Lock Washer
46		1" SAE Washer

LOW PRESSURE OUTRIGGER LIFT AND WHEEL CYLINDERS (5-SECTION FOLDING)

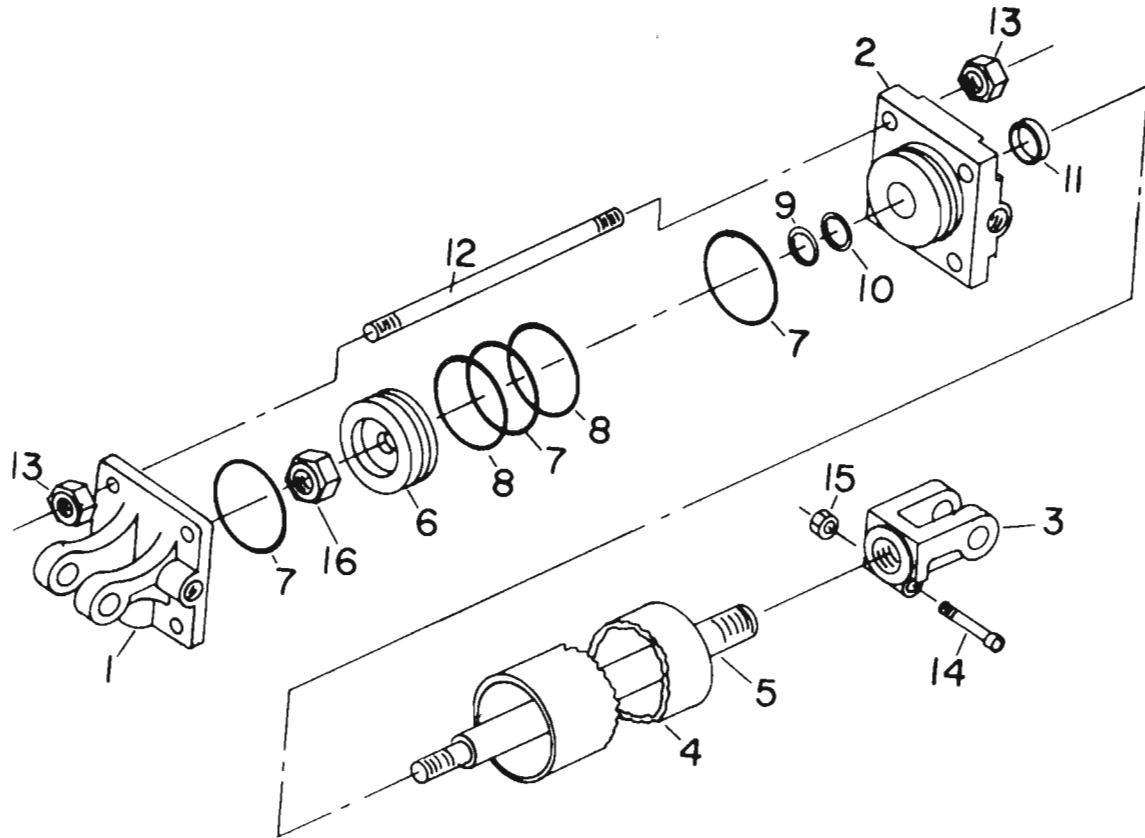


LOW PRESSURE OUTRIGGER LIFT AND WHEEL CYLINDERS (5-SECTION FOLDING)

KEY	PART NO.	DESCRIPTION
1	D10015	Outrigger Stop Number
2	D10045	Outrigger Support
3	D10046	R. H. Outrigger Stop
4	D10047	L. H. Outrigger Stop
5	D10056	Spring Support
6	D10057	Compression Spring
7	D10058	Push Rod
8	D10059	R. H. Lift Arm
9	D10060	L. H. Lift Arm
10	D10064	Lift Strap
11	D10065	Pin
12	D10066	Link Lift
13	D10067	Pin Assembly
14	D10068	U-Bolt
15	D10087	Rear Stand
16	D10137	Locking Pin
17	D10139	Rear Stand Pin
18	D10154	Ram Pivot Pin
19	D10226	SMV Emblem Bracket
20	D10298	Strap
21	D10299	Dual Cylinder Pin
22	D10327	Outrigger Cylinder Pin
23	D10328	Hose Clamp
24	D10333	Hydraulic Hose Block
25	D10394	Spring Retainer
26	F10148	Cylinder Pin
27	F10202	3-1/2 x 8 Cylinder
28	F10203	3-3/4 x 8 Cylinder
29	F10205	4 x 8 Cylinder
30	F10206	4 x 16 Cylinder
31	F10207	4 x 32 Cylinder
32	K1678	Clevis Pin
33	K2189	Slow Moving Vehicle Emblem
34		1/4 x 1-3/4 Spring Pin
35		5/16 x 2 Spring Pin
36		5/16 x 2-1/2 Spring Pin
37		3/8 x 1-7/8 Spring Pin
38		1/4-20 UNC x 3/4 Cap Screw
39		1/4-20 UNC Hex Nut
40		1/4 Lock Washer
41		1/2-13 UNC x 1-3/4 Cap Screw
42		1/2-13 UNC x 3-1/2 Cap Screw
43		1/2-13 UNC Hex Nut
44		1/2 Lock Washer
45		5/8-11 UNC x 5-1/2 Cap Screw
46		5/8-11 UNC Hex Nut
47		5/8 Lock Washer
48		1" SAE Washer

HYRADULIC CYLINDERS, TIE ROD

F10206 (4 x 16), F10207 (4 x 32), F10208 (5 x 16), F10209 (5 x 32)



HYDRAULIC CYLINDERS, TIE ROD

F10206 (4 x 16)

F10207 (4 x 32)

F10208 (5 x 16)

F10209 (5 x 32)

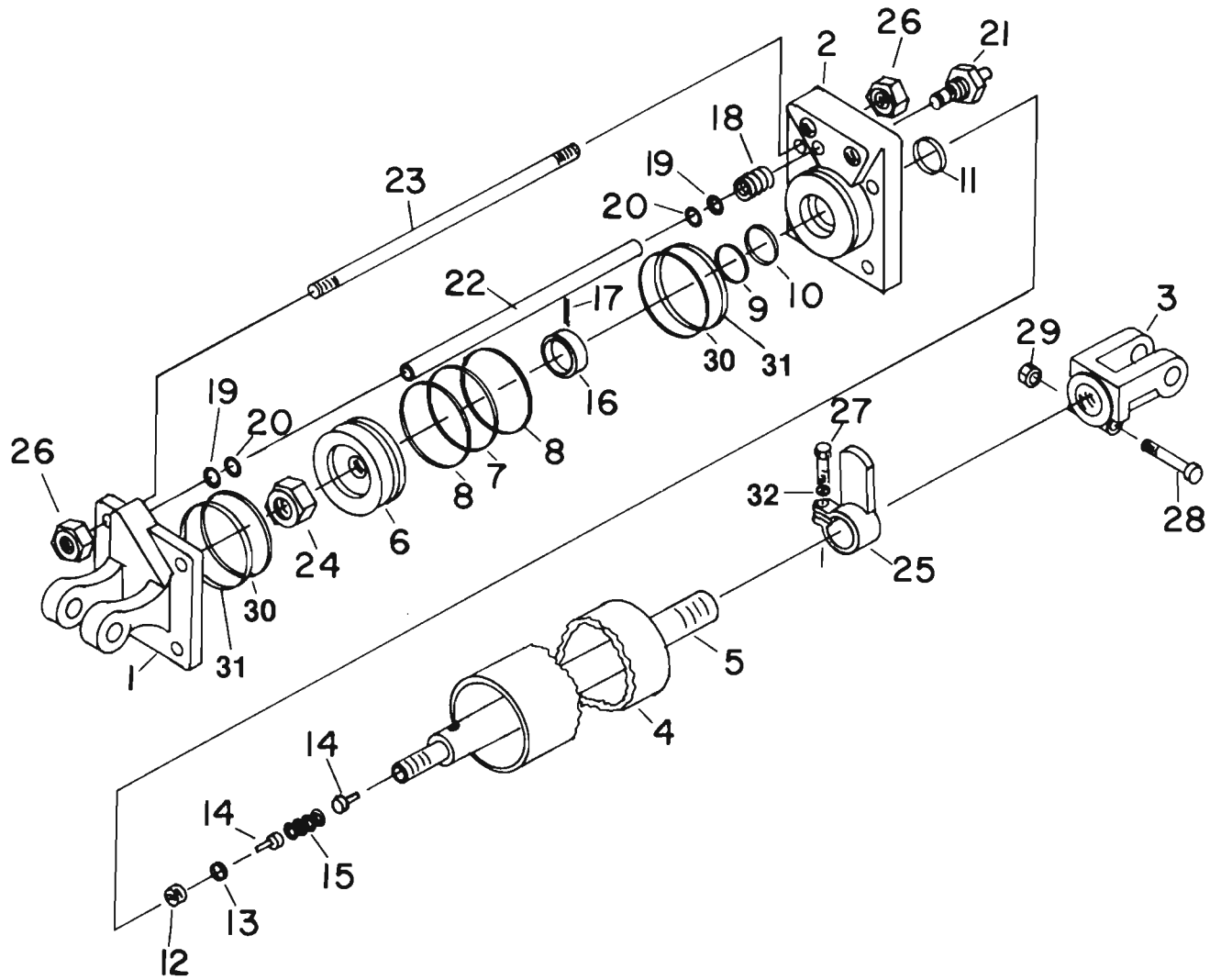
KEY	PART NO.	DESCRIPTION	CYL. SIZE
1	F10086	Base	4 x 16 & 4 x 32
	F10139		5 x 16 & 5 x 32
2	F10090	Head	4 x 16
	F10130		4 x 32
	F10142		5 x 16 & 5 x 32
3	F10092	Rod Clevis	4 x 16 & 5 x 16
	F10133		4 x 32
	F10152		5 x 32
4	F10094	Tube	4 x 16
	F10135		4 x 32
	F10146		5 x 16
	F10154		5 x 32
5	F10093	Rod	4 x 16
	F10134		4 x 32
	F10145		5 x 16
	F10153		5 x 32
6	K1633	Piston	4 x 16 & 4 x 32
	F10140		5 x 16 & 5 x 32
▶ 7	F10075	O-Ring	4 x 16 & 4 x 32
	F10141		5 x 16 & 5 x 32
▶ 8	F10073	Backup	4 x 16 & 4 x 32
	F10137		5 x 16 & 5 x 32
▶ 9	F10089	O-Ring	4 x 16, 5 x 16 & 5 x 32
	F10030		4 x 32
▶ 10	F10088	Back-up	4 x 16, 5 x 16, 5 x 32
	F10029		4 x 32
▶ 11	F10087	Wiper	4 x 16, 5 x 16 & 5 x 32
	F10028		4 x 32
12	F10091	Tie Rod	4 x 16
	F10131		4 x 32
	F10144		5 x 16
	F10151		5 x 32
13	F10054	Nut	4 x 16 & 4 x 32
	F10143		5 x 16 & 5 x 32
14	F10034	Cap Screw	4 x 16 & 5 x 16
	F10132		4 x 32 & 5 x 32
15	F10035	Nut	4 x 16, 4 x 32, 5 x 16 & 5 x 32
16	K1636	Nut	4 x 16 & 4 x 32
	F10138		5 x 16 & 5 x 32
--	F10095	Seal Kit	4 x 16
	F10136		4 x 32
	F10147		5 x 16 & 5 x 32

▶ Included in Seal Kit

HYDRAULIC CYLINDERS, TIE ROD, MASTER

F10204 (3-1/2 x 8)

F10205 (4 x 8)



HYDRAULIC CYLINDERS, TIE ROD, MASTER

Serial No. D038 Up Except D048 to D053

F10304 (3-1/2 x 8) F10305 (4 x 8)

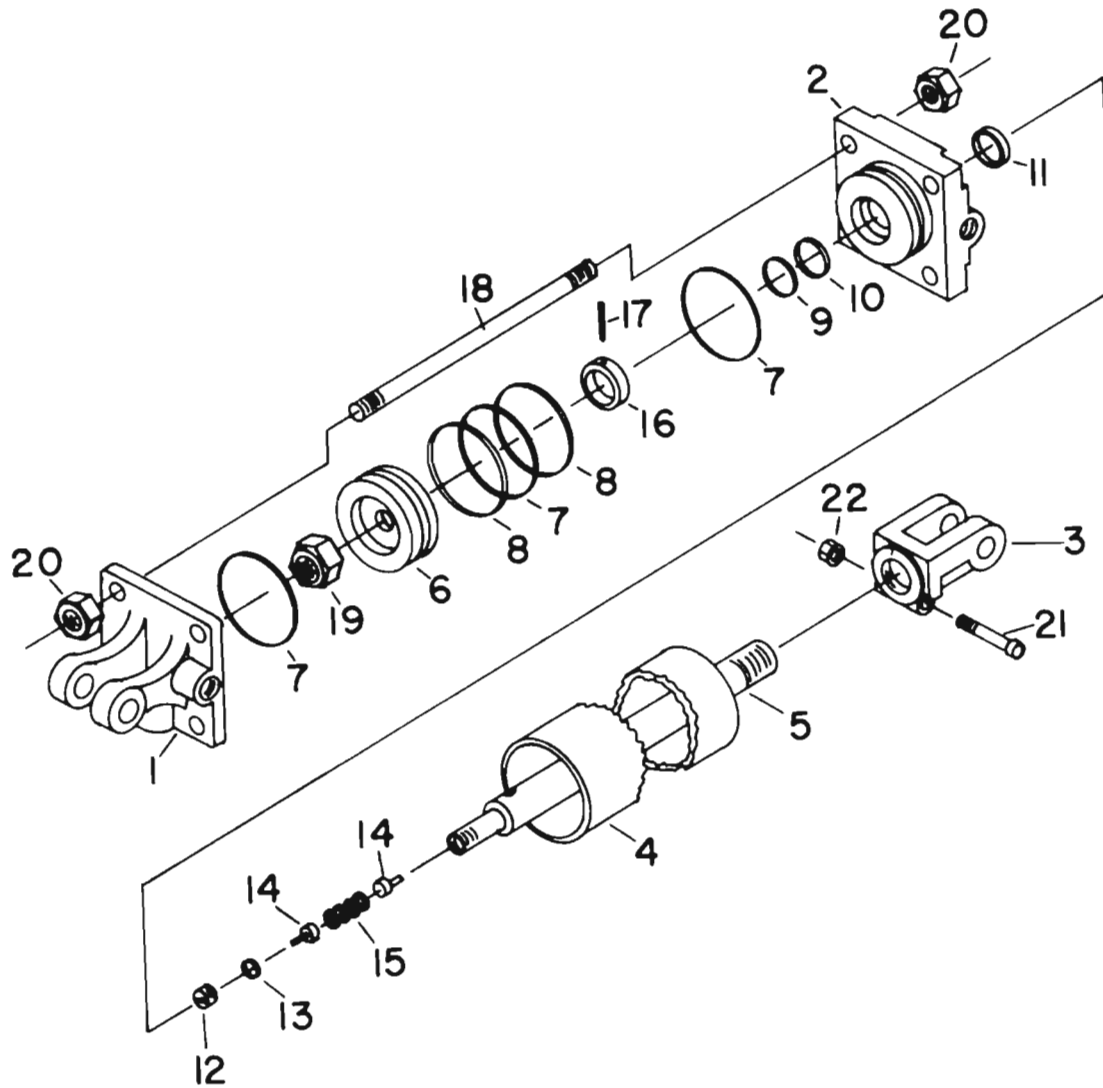
KEY	PART NO.	DESCRIPTION	CYL. SIZE
1	F10069	Base	3-1/2 x 8
	K1634		4 x 8
2	F10070	Head	3-1/2 x 8
	F10082		4 x 8
3	K1630	Rod Clevis	3-1/2 x 8 & 4 x 8
4	F10335	Tube	3-1/2 x 8
	F10338		4 x 8
5	F10329	Rod	3-1/2 x 8
	F10331		4 x 8
6	F10345	Piston	3-1/2 x 8
	F10347		4 x 8
▶ 7	F10298	Teflon Ring	3-1/2 x 8
	F10311		4 x 8
▶ 8	F10314	Wear Ring	3-1/2 x 8
	F10316		4 x 8
▶ 9	F10030	O-Ring	3-1/2 x 8
	F10076		4 x 8
▶ 10	F10029	Back-Up	3-1/2 x 8
	F10074		4 x 8
▶ 11	F10028	Wiper	3-1/2 x 8
	F10077		4 x 8
▶ 12	F10320	O-Ring (Preload)	3-1/2 x 8
	F10322		4 x 8
18	F10191	Spring	3-1/2 x 8 & 4 x 8
▶ 19	F10062	O-Ring	3-1/2 x 8 & 4 x 8
▶ 20	F10061	Back-Up	3-1/2 x 8 & 4 x 8
21	K1677	Cartridge Assembly	3-1/2 x 8 & 4 x 8
22	K1635	Feed Tube	3-1/2 x 8 & 4 x 8
23	F10066	Tie Rod	3-1/2 x 8
	K1631		4 x 8
24	K1636	Piston Nut	3-1/2 x 8 & 4 x 8
25	F10068	Stop Actuator	3-1/2 x 8
	F10079		4 x 8
26	F10032	Tie Rod Nut	3-1/2 x 8
	F10054		4 x 8
27	F10064	Cap Screw	3-1/2 x 8 & 4 x 8
28	F10034	Cap Screw, Clamp	3-1/2 x 8 & 4 x 8
29	F10035	Nut	3-1/2 x 8 & 4 x 8
30	F10192	O-Ring	3-1/2 x 8
	F10194		4 x 8
31	F10193	Back-Up	3-1/2 x 8
	F10195		4 x 8
32		5/16 Lock Washer	3-1/2 x 8 & 4 x 8
—	F10308	Seal Kit	3-1/2 x 8
	F10310		4 x 8

▶ Included in Seal Kit

HYDRAULIC CYLINDERS, TIE ROD, SLAVE

Serial No. D001 to D037, D048 to D053

F10200 (3 x 8), F10201 (3-1/4 x 8), F10202 (3-1/2 x 8), F10203 (3-3/4 x 8)



HYDRAULIC CYLINDER, TIE ROD, SLAVE

Serial No. D001 to D037, D048 to D053

F10200 (3 x 8)

F10201 (3-1/4 x 8)

F10202 (3-1/2 x 8)

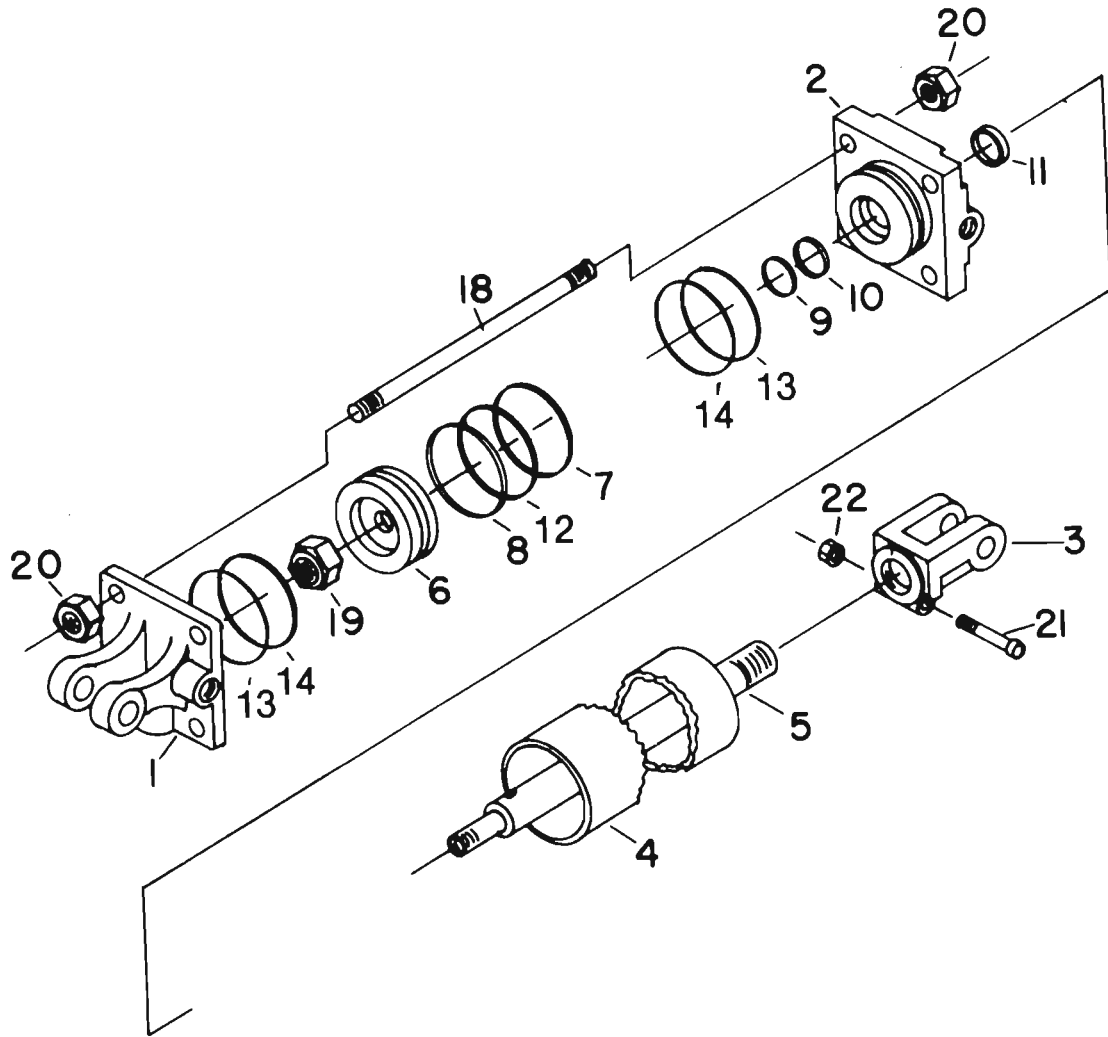
F10203 (3-3/4 x 8)

KEY	PART NO.	DESCRIPTION	CYL. SIZE
1	F10167	Base	3 x 8
	F10025		3-1/4 x 8
	F10040		3-1/2 x 8
	F10049		3-3/4 x 8
2	F10163	Head	3 x 8
	F10031		3-1/4 x 8
	F10046		3-1/2 x 8
	F10053		3-3/4 x 8
3	F10036	Rod Clevis Tube	3 x 8, 3-1/4 x 8, 3-1/2 x 8 & 3-3/4 x 8
4	F10011		3 x 8
	F10038		3-1/4 x 8
	F10047		3-1/2 x 8
	F10057		3-3/4 x 8
5	F10161	Rod	3 x 8
	F10037		3-1/4 x 8 & 3-1/2 x 8
	F10056		3-3/4 x 8
6	F10164	Piston	3 x 8
	F10026		3-1/4 x 8
	F10044		3-1/2 x 8
	F10051		3-3/4 x 8
▶ 7	F10166	O-Ring	3 x 8
	F10027		3-1/4 x 8
	F10045		3-1/2 x 8
	F10052		3-3/4 x 8
▶ 8	F10165	Back-up	3 x 8
	F10024		3-1/4 x 8
	F10041		3-1/2 x 8
	F10050		3-3/4 x 8
▶ 9	F10030	O-Ring	3 x 8, 3-1/4 x 8, 3-1/2 x 8 & 3-3/4 x 8
▶ 10	F10029	Back-up	3 x 8, 3-1/4 x 8, 3-1/2 x 8 & 3-3/4 x 8
▶ 11	F10028	Wiper	3 x 8, 3-1/4 x 8, 3-1/2 x 8 & 3-3/4 x 8
12	F10023	Seat	3 x 8, 3-1/4 x 8, 3-1/2 x 8 & 3-3/4 x 8
▶ 13	F10022	O-Ring	3 x 8, 3-1/4 x 8, 3-1/2 x 8 & 3-3/4 x 8
14	F10021	Poppet	3 x 8, 3-1/4 x 8, 3-1/2 x 8 & 3-3/4 x 8
15	F10043	Spring	3 x 8, 3-1/2 x 8 & 3-3/4 x 8
	F10020		3-1/4 x 8
16	F10017	Collar	3 x 8, 3-1/4 x 8, 3-1/2 x 8 & 3-3/4 x 8
17	F10018	Roll Pin	3 x 8, 3-1/4 x 8, 3-1/2 x 8 & 3-3/4 x 8
18	F10162	Tie Rod	3 x 8
	F10033		3-1/4 x 8 & 3-1/2 x 8
	F10055		3-3/4 x 8
19	K1636	Nut	3 x 8, 3-1/4 x 8, 3-1/2 x 8, 3-3/4 x 8
20	F10103	Nut, Tie Rod	3 x 8
	F10032		3-1/4 x 8 & 3-1/2 x 8
	F10054		3-3/4 x 8
21	F10034	Cap Screw	3 x 8, 3-1/4 x 8, 3-1/2 x 8 & 3-3/4 x 8
22	F10035	Nut	3 x 8, 3-1/4 x 8, 3-1/2 x 8 & 3-3/4 x 8
--	F10019	Seal Kit	3 x 8
	F10039		3-1/4 x 8
	F10048		3-1/2 x 8
	F10058		3-3/4 x 8

▶ Included in Seal Kit.

HYDRAULIC CYLINDERS, TIE ROD, SLAVE

Serial No. D038 Up Except D048 to D053
F10300 (3 x 8), F10301 (3-1/4 x 8), F10302 (3-1/2 x 8), F10303 (3-3/4 x 8)



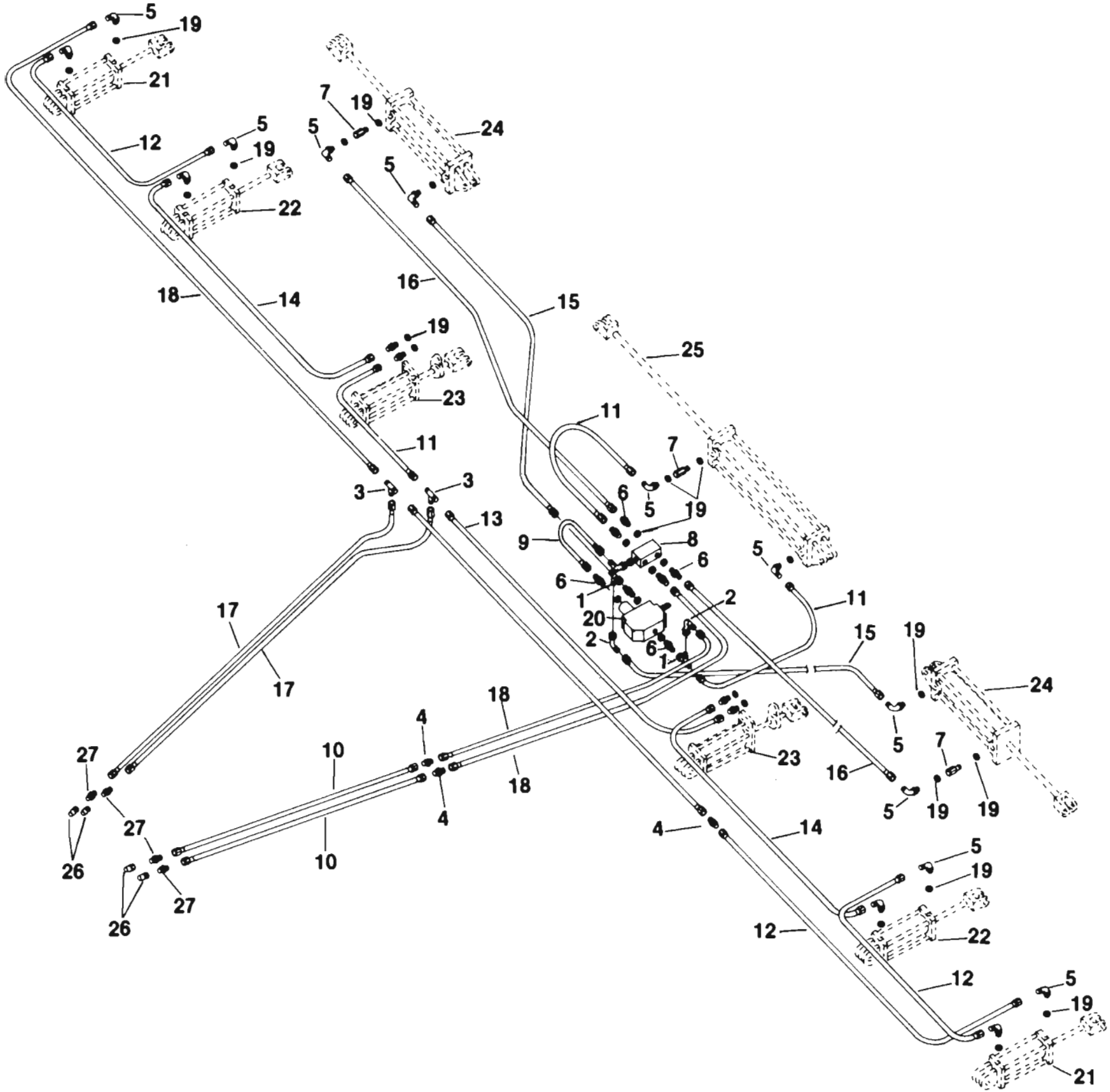
HYDRAULIC CYLINDER, TIE ROD, SLAVE

Serial No. D038 Up Except D048 to D053

F10300 (3 x 8), F10301 (3-1/4 x 8), F10302 (3-1/2 x 8), F10303 (3-3/4 x 8)

KEY	PART NO.	DESCRIPTION	CYL. SIZE
1	F10348	Base	3 x 8
	F10349		3-1/4 x 8
	F10350		3-1/2 x 8
	F10351		3-3/4 x 8
2	F10339	Head	3 x 8
	F10340		3-1/4 x 8
	F10341		3-1/2 x 8
	F10342		3-3/4 x 8
3	K1630	Rod Clevis	3 x 8, 3-1/4 x 8, 3-1/2 x 8 & 3-3/4 x 8
4	F10333	Tube	3 x 8
	F10344		3-1/4 x 8
	F10336		3-1/2 x 8
	F10337		3-3/4 x 8
5	F10328	Rod	3 x 8
	F10330		3-1/4 x 8 & 3-1/2 x 8
	F10332		3-3/4 x 8
6	F10343	Piston	3 x 8
	F10344		3-1/4 x 8
	F10345		3-1/2 x 8
	F10346		3-3/4 x 8
▶ 7	F10296	Teflon Ring	3 x 8
	F10297		3-1/4 x 8
	F10298		3-1/2 x 8
	F10299		3-3/4 x 8
▶ 8	F10312	Wear Ring	3 x 8
	F10313		3-1/4 x 8
	F10314		3-1/2 x 8
	F10315		3-3/4 x 8
▶ 9	F10030	O-Ring	3 x 8, 3-1/4 x 8, 3-1/2 x 8
	F10076		3-3/4 x 8
▶ 10	F10029	Back-Up	3 x 8, 3-1/4 x 8, 3-1/2 x 8
	F10074		3-3/4 x 8
▶ 11	F10028	Wiper	3 x 8, 3-1/4 x 8, 3-1/2 x 8
	F10077		3-3/4 x 8
▶ 12	F10318	O-Ring (Preload)	3 x 8
	F10319		3-1/4 x 8
	F10320		3-1/2 x 8
	F10321		3-3/4 x 8
▶ 13	F10293	Back-Up Ring	3 x 8
	F10294		3-1/4 x 8
	F10193		3-1/2 x 8
	F10295		3-3/4 x 8
▶ 14	F10323	O-Ring	3 x 8
	F10324		3-1/4 x 8
	F10192		3-1/2 x 8
	F10325		3-3/4 x 8
18	F10326	Tie Rod	3 x 8
	F10327		3-1/4 x 8 & 3-1/2 x 8
	F10055		3-3/4 x 8
19	F10317	Nut	3 x 8
	K1636		3-1/4 x 8, 3-1/2 x 8, 3-3/4 x 8
20	F10103	Nut, Tie Rod	3 x 8
	F10032		3-1/4 x 8 & 3-1/2 x 8
	F10054		3-3/4 x 8
21	F10034	Cap Screw	3 x 8, 3-1/4 x 8, 3-1/2 x 8, 3-3/4 x 8
22	F10035	Nut	3 x 8, 3-1/4 x 8, 3-1/2 x 8, 3-3/4 x 8
—	F10306	Seal Kit	3 x 8
	F10307		3-1/4 x 8
	F10308		3-1/2 x 8
	F10309		3-3/4 x 8

HYDRAULIC HOSES & FITTING HIGH PRESSURE (5-SECTION, 46')



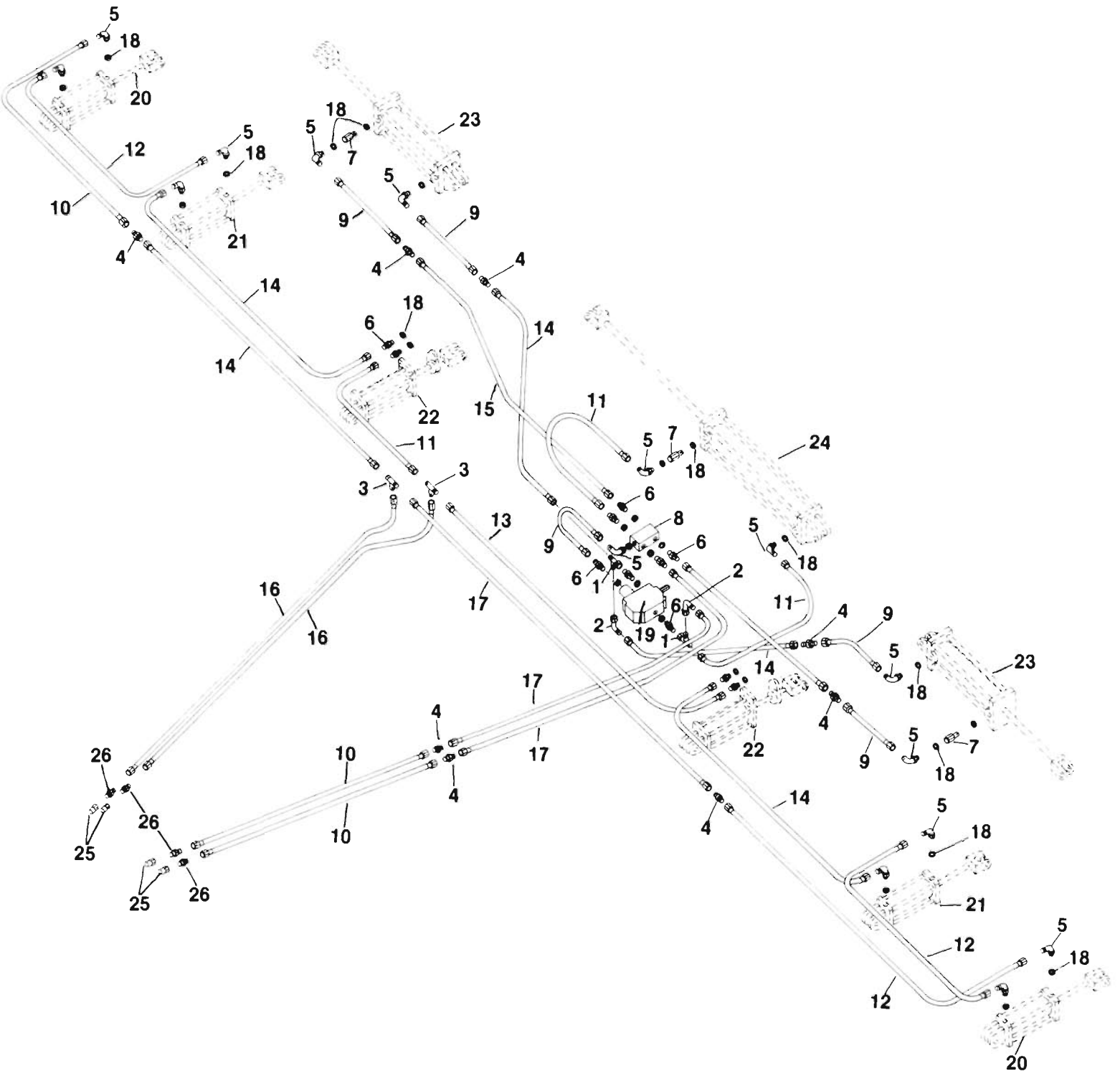
HYDRAULIC HOSES & FITTINGS HIGH PRESSURE (5-SECTION, 46')

KEY	PART NO.	DESCRIPTION
1	F1211	Tee Coupling
2	F1615	Swivel Nut 90° Elbow
3	F1628	Union Tee
4	F1629	Union
5	F10096	Straight Thread, O-Ring, 90° Elbow
6	F10098	Straight Thread Connector
7	F10100	Restrictor
8	F10101	Manifold
9	F10127	Hose Assembly, 28''
10	F10128	Hose Assembly, 88''
11	F10168	Hose Assembly, 48''
12	F10170	Hose Assembly, 104''
13	F10171	Hose Assembly, 124''
14	F10172	Hose Assembly, 156''
15	F10173	Hose Assembly, 180''
16	F10174	Hose Assembly, 200''
17	F10175	Hose Assembly, 216''
18	F10176	Hose Assembly, 240''
● 19	F10186	O-Ring
20	F10188	Sequence Valve
21	F10200	3 x 8 Cylinder
22	F10201	3-1/4 x 8 Cylinder
23	F10204	3-1/2 x 8 Cylinder with Stop
24	F10208	5 x 16 Cylinder
25	F10209	5 x 32 Cylinder
26		Coupling, Breakaway, not furnished
▶ 27		Hose Adapter, not furnished

● Included in F10096 & F10098.

▶ Note: Use F10098 with ORB Body Coupling.
Use F1207 with NPT Body Coupling.

HYDRAULIC HOSES AND FITTINGS HIGH PRESSURE (5-SECTION, 50')



HYDRAULIC HOSES & FITTINGS

HIGH PRESSURE

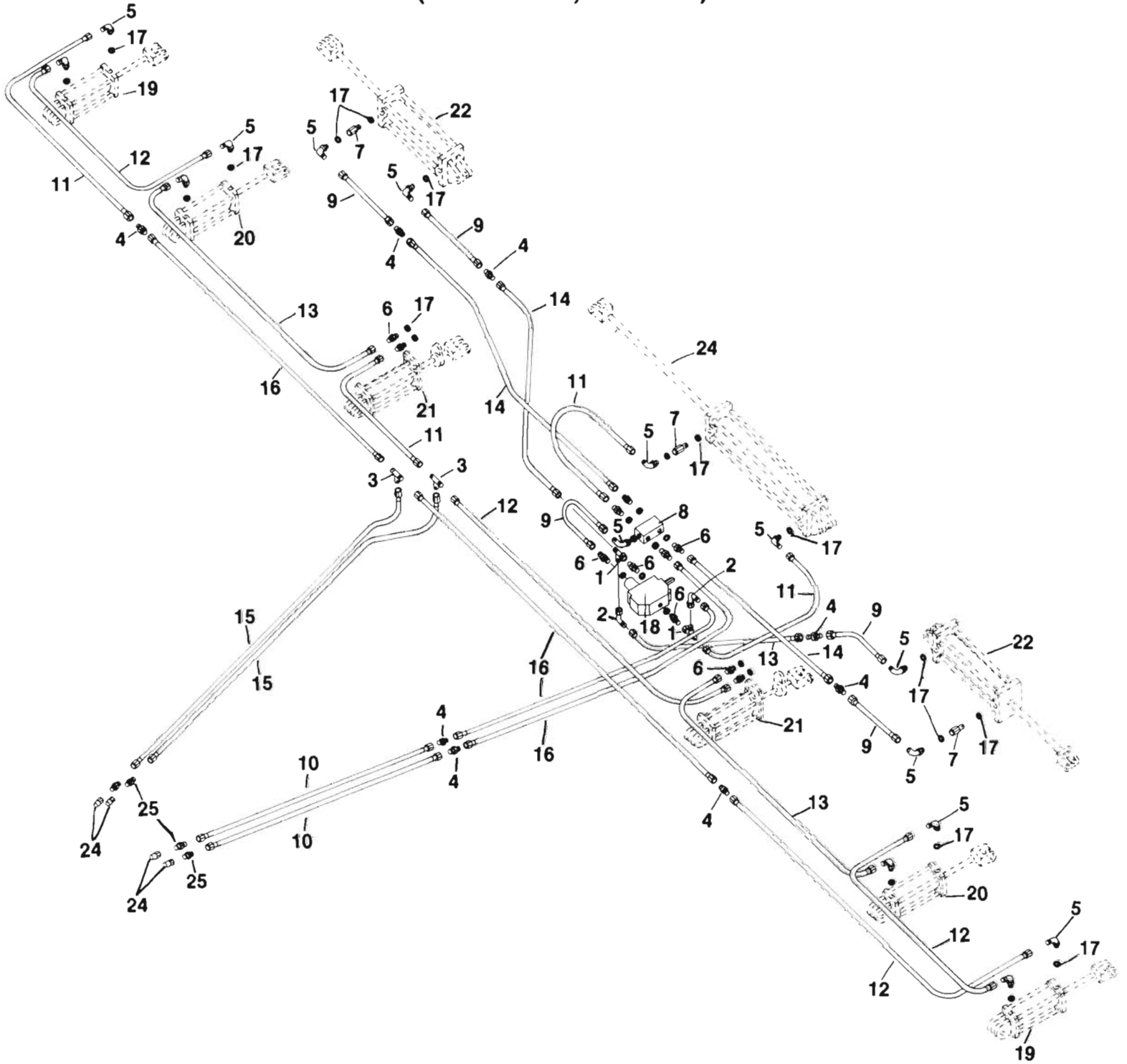
(5-SECTION, 50')

KEY	PART NO.	DESCRIPTION
1	F1211	Tee Coupling
2	F1615	Swivel Nut 90° Elbow
3	F1628	Union Tee
4	F1629	Union
5	F10096	Straight Thread, O-Ring 90° Elbow
6	F10098	Straight Thread Connector
7	F10100	Restrictor
8	F10101	Manifold
9	F10127	Hose Assembly, 28"
10	F10128	Hose Assembly, 88"
11	F10168	Hose Assembly, 48"
12	F10170	Hose Assembly, 104"
13	F10171	Hose Assembly, 124"
14	F10173	Hose Assembly, 180"
15	F10174	Hose Assembly, 200"
16	F10175	Hose Assembly, 216"
17	F10176	Hose Assembly, 240"
● 18	F10186	O-Ring
19	F10188	Sequence Valve
20	F10200	3 x 8 Cylinder
21	F10201	3-1/4 x 8 Cylinder
22	F10204	3-1/2 x 8 Cylinder with Stop
23	F10208	4 x 16 Cylinder
24	F10209	5 x 32 Cylinder
25		Coupling, Breakaway, not furnished
▶ 26		Hose Adapter, not furnished

● Included in F10096 & F10098.

▶ Note: Use F10098 with ORB Body Coupling.
Use F1207 with NPT Body Coupling.

HYDRAULIC HOSES & FITTINGS HIGH PRESSURE (5-SECTION, 54' & 56')



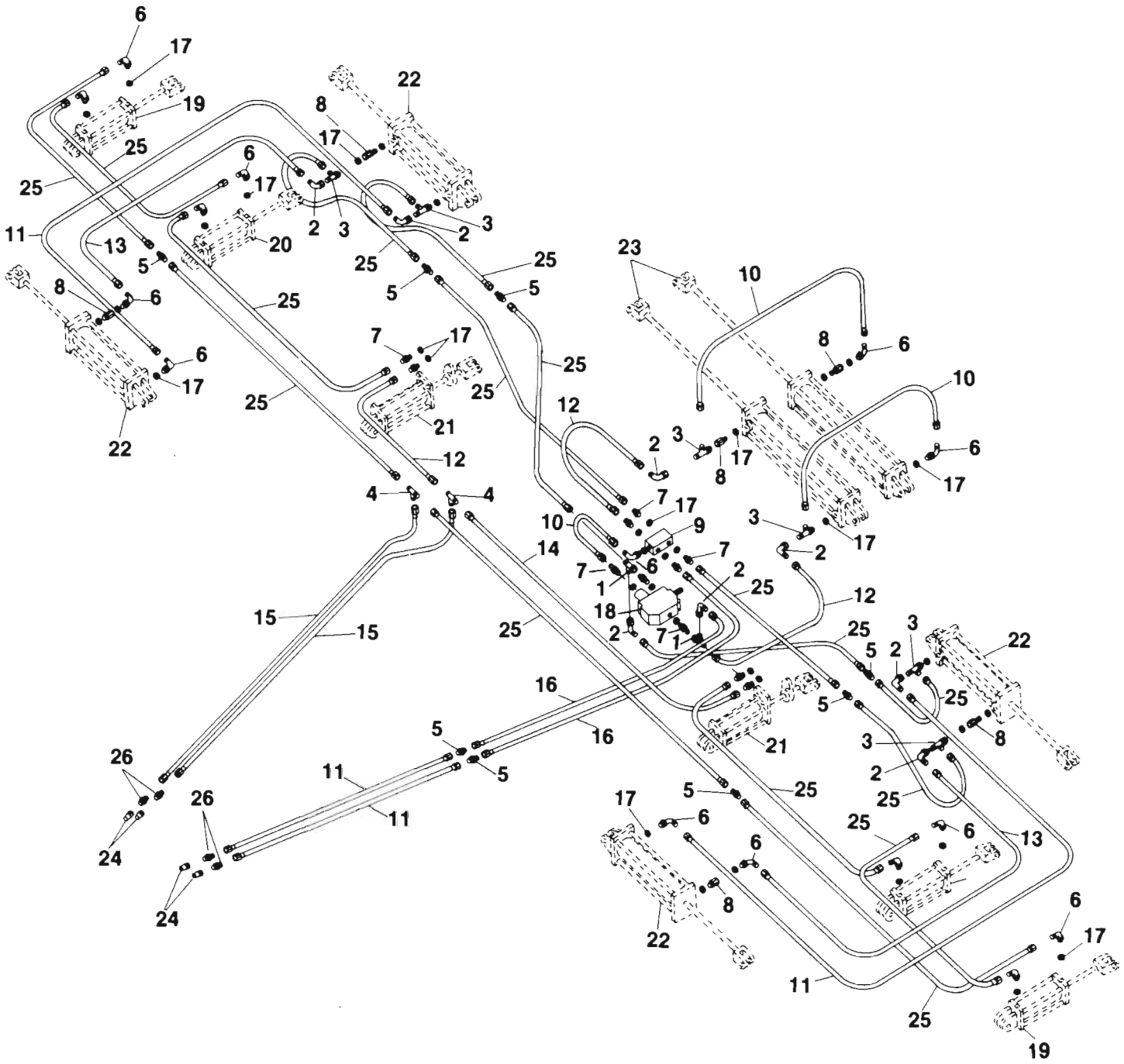
HYDRAULIC HOSES & FITTINGS HIGH PRESSURE (5-SECTION, 54' & 56')

KEY	PART NO.	DESCRIPTION
1	F1211	Tee Coupling
2	F1615	Swivel Nut 90° Elbow
3	F1628	Union Tee
4	F1629	Union
5	F10096	Straight Thread, O-Ring 90° Elbow
6	F10098	Straight Thread Connector
7	F10100	Restrictor
8	F10101	Manifold
9	F10127	Hose Assembly, 28"
10	F10128	Hose Assembly, 88"
11	F10168	Hose Assembly, 48"
12	F10171	Hose Assembly, 124"
13	F10173	Hose Assembly, 180"
14	F10174	Hose Assembly, 200"
15	F10175	Hose Assembly, 216"
16	F10176	Hose Assembly, 240"
● 17	F10186	O-Ring
18	F10188	Sequence Valve
19	F10200	3 x 8 Cylinder
20	F10201	3-1/4 x 8 Cylinder
21	F10204	3-1/2 x 8 Cylinder with Stops
22	F10208	5 x 16 Cylinder
23	F10209	5 x 32 Cylinder
24		Coupling, Breakaway, not furnished
▶ 25		Hose Adapter, not furnished

● Included in F10096 & F10098.

▶ Note: Use F10098 with ORB Body Coupling.
Use F1207 with NPT Body Coupling.

HYDRAULIC HOSES & FITTINGS LOW PRESSURE (5-SECTION FOLDING)



HYDRAULIC HOSES & FITTINGS

LOW PRESSURE

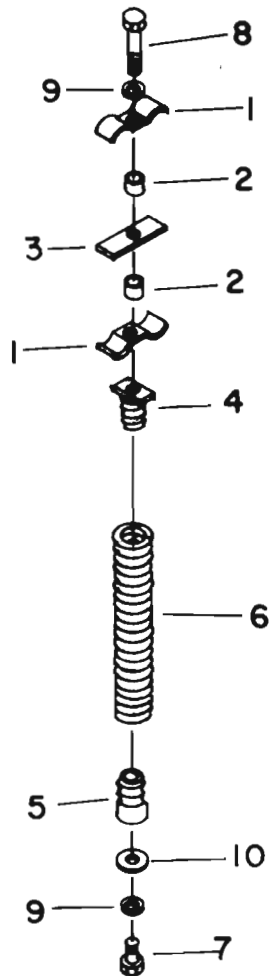
(5-SECTION FOLDING)

KEY	PART NO.	DESCRIPTION
1	F1211	Tee Coupling
2	F1615	Swivel Nut 90° Elbow
3	F1627	Straight Thread Run Tee
4	F1628	Union Tee
5	F1629	Union
6	F10096	Straight Thread, O-Ring 90° Elbow
7	F10098	Straight Thread Connector
8	F10100	Restrictor
9	F10101	Manifold
10	F10127	Hose Assembly, 28''
11	F10128	Hose Assembly, 88''
12	F10168	Hose Assembly, 48''
13	F10169	Hose Assembly, 54''
14	F10171	Hose Assembly, 124''
15	F10175	Hose Assembly, 216''
16	F10176	Hose Assembly, 240''
● 17	F10186	O-Ring
18	F10188	Sequence Valve
19	F10202	3-1/2 x 8 Cylinder
20	F10203	3-3/4 x 8 Cylinder
21	F10205	4 x 8 Cylinder with Stop
22	F10206	4 x 16 Cylinder
23	F10207	4 x 32 Cylinder
24		Coupling, Breakaway, not furnished
25		47' Hoses, refer to page 33
		50' Hoses, refer to page 35
		54' & 56' Hoses, refer to page 37
▶ 26		Hose Adapter, not furnished

● Included in F1627, F10096 & F10098.

▶ Note: Use F10098 with ORB Body Coupling.
Use F1207 with NPT Body Coupling.

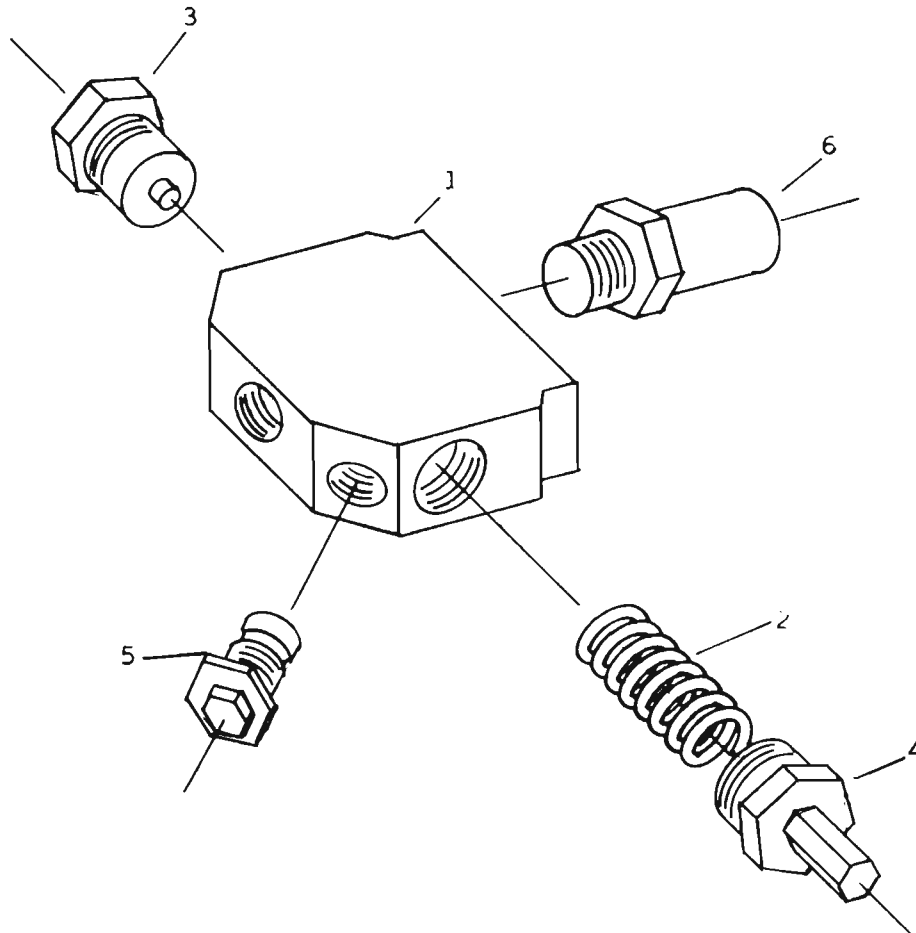
HOSE SUPPORT



KEY	PART NO.	DESCRIPTION
1	D10300	Hose Clamp
2	D10301	Spacer
3	D10302	Spacer Plate
4	D10303	Upper Spring Plug
5	D10304	Lower Spring Plug
6	K1005	Spring
7		7/16-14 UNC x 1-1/2 Cap Screw
8		7/16-14 UNC x 2-3/4 Cap Screw
9		7/16 Lock Washer
10		7/16 Flat Washer

SEQUENCE VALVE

(F10188)



KEY	PART NO.	DESCRIPTION
1	F10210	Body & Metering Spool
2	F10217	Metering Spring
3	F10236	Pilot Plug Assembly
4	F10237	Adjusting Plug
5	F10238	Internal Check Valve Cartridge
6	F10239	External Check Valve
--	F10240	Seal Kit

DECALS

PART NO.	MESSAGE
D1	"J. E. LOVE COMPANY"
D80	"WARNING To prepare machine for safe transport: 1. Stop machine and raise O. R. to transport position. 2. Secure raised O. R. with locking pins before transporting. 3. Pin transport wheels in raised position using locks provided. 4. Disconnect rod universal line."
D81	"DANGER Serious injury or death can result from contact with electric lines. Use care when moving or operating this machine near electric lines to avoid contact."
D82	"WARNING To prevent possible injury due to uncontrolled upward tongue movement when unhitching from tractor: 1. Lower jackstands provided at rear of machine, or 2. Unfold O. R. to field position and lower machine to ground."
D83	"WARNING To avoid possible bodily injury, always install transport wheel locks before: 1. Attaching or detaching rod drive line, or 2. Servicing rod drive lines or rod drive chains."
D84	"CAUTION To avoid possible bodily injury, always: 1. Stand clear of machine O. R. and hinge areas when raising, lowering or folding O. R. 2. Stop machine to raise or lower O. R. 3. Lower rear jackstands before unhitching tractor."

NUMERICAL CROSS REFERENCE

(5-SECTION FOLDING)

PART NO.	DESCRIPTION	PAGE	PART NO.	DESCRIPTION	PAGE
A1574	Wheel, 16 x 5.50	7, 21	D10073	Bearing	11, 15
B1616	Wheel Bolt	7, 21	D10074	Bearing Block	13, 17
D1	"LOVE"-Decal	42	D10075	Lower Sprocket 7/8"	11, 13, 15, 17
D80	"WARNING"-Decal	42	D10077	1" Square Spool	13, 17
D81	"DANGER"-Decal	42	D10078	Hitch Link	7
D82	"WARNING"-Decal	42	D10079	Main Frame Hinge	9
D83	"WARNING"-Decal	42	D10080	Outrigger Hinge	7
D84	"CAUTION"-Decal	42	D10081	Boot Point	11, 15
D10001	Stop Assembly	9	D10087	Rear Stand	23, 25
D10002	Main Frame Front Tube	7	D10088	Jack Assembly	7
D10003	Main Frame Center Tube	7	D10089	Quick-Lock Pin	7
D10004	Main Frame Rear Tube	7	D10090	Jack Pin	7
D10006	R. H. Main Frame End	7	D10091	Jack Support	7
D10007	L. H. Main Frame End	7	D10092	Valve Stem	21
D10008	Hitch Beam	7	D10110	Wheel 15 x 5	21
D10015	Outrigger Stop Member	23, 25	D10112	Hex Shaft and Yoke	13, 17
D10016	"A" Frame	9	D10114	Yoke with Tube and Rectangular Sleeve	13, 17
D10018	Outrigger, 6'	9	D10117	Yoke and Rectangular Shaft, 56"	13, 17
D10019	Outrigger, 8'	9	D10119	Joint Assembly Boot Input	13, 17
D10020	Outrigger, 10'	9	D10120	Yoke and Shear Pin Shaft	13, 17
D10021	Outrigger, 12'	9	D10122	Shear Pin Drive Plate	13, 17
D10022	Joint Assembly, Q. D. to Rectangular Shaft	13, 17	D10124	Hub with Cups and Sleeve	21
D10023	30" Joint Assembly	13, 17	D10125	Inner Cup	21
D10030	10' Truss Rod	9	D10126	Outer Cup	21
D10038	Stabilizer Wheel Support	9	D10127	Inner Bearing	21
D10045	Outrigger Support	23, 25	D10128	Outer Bearing	21
D10046	R. H. Outrigger Stop	23, 25	D10129	Wear Sleeve	21
D10047	L. H. Outrigger Stop	23, 25	D10130	Seal	21
D10050	Hitch Bracket (4 WF)	7	D10131	Hub Cap	21
D10051	Front Tongue Support (4 WF)	7	D10133	Hinge Pin	9
D10052	Shim (4 WF)	7	D10134	Front Outer Hinge	9
D10053	Center Tongue Support	7	D10135	Front Inside Hinge	9
D10054	Anchor, 4 x 4	9	D10136	Front Hinge Pin	9
D10055	Anchor, 2 x 4	9	D10137	Spring Locking Pin	9, 23, 25
D10056	Spring Support	23, 25	D10139	Rear Stand Pin	23, 25
D10057	Compression Spring	23, 25	D10142	Long Wheel Bolt	21
D10058	Rod Push	23, 25	D10143	Hose Clamp	13, 17
D10059	R. H. Lift Arm	23, 25	D10144	Hose Clamp	13, 17
D10060	L. H. Lift Arm	23, 25	D10145	Rubber Boot	13, 17
D10061	R. H. Angle	9	D10146	Short Wheel Bolt	21
D10062	L. H. Angle	9	D10147	Rear Inside Hinge	9
D10063	O. R. Lift Strap	9	D10148	12' Truss Rod	9
D10064	Lift Strap	23, 25	D10149	Rear Outer Hinge	9
D10065	Pin	23, 25	D10150	Spacer	9
D10066	Link Lift	23, 25	D10151	Rear Hinge Pin	9
D10067	Pin Assembly	23, 25	D10152	Curved Link	9
D10068	U-bolt	9, 23, 25	D10153	Lift Link	9
D10070	Truss Rod Support	9	D10154	Ram Pivot Pin	9, 23, 25
D10071	Truss Rod Stand	9	D10155	Lift Link Pin	9
D10072	Lower Sprocket 1"	11, 13, 15, 17	D10156	Axle Rockshaft, 5-Section	7
			D10157	Live Axle Hub	7
			D10158	Ball Bearing	7

PART NO.	DESCRIPTION	PAGE	PART NO.	DESCRIPTION	PAGE
D10159	Spacer	7	D10252	Rigid Boot	15
D10160	Live Axle	7	D10253	Spacer	15
D10161	Thrust Washer	7	D10254	Rod, 1" x 81"	13, 17
D10162	R. H. Wheel Support	5, 9	D10255	Rod, 1" x 117"	13, 17
D10163	Outrigger Hinge Bushing	5, 9	D10256	Short Pendant	13
D10164	Right Hand Wheel Spindle	5, 9, 21	D10257	Long Pendant	13
D10165	Eye Bolt, 1"	5	D10258	R. H. Tiller Bar (12-1/2")	13, 17
D10176	Spindle	21	D10259	L. H. Tiller Bar (12-1/2")	13, 17
D10177	Lock-up Strut	7	D10263	Bottom Chisel	13, 17
D10178	Lock-up Anchor	7	D10264	Top Chisel	13, 17
D10179	Long Pin	7	D10265	Tiller Bar Mounting Angle R. H.	13, 17
D10180	Short Pin	7	D10266	Tiller Bar Mounting Angle L. H.	13, 17
D10181	L. H. Wheel Support	5, 9	D10269	R. H. Tiller Bar (60-1/2")	13, 17
D10183	O. R. Support Strap	5, 9	D10270	L. H. Tiller Bar (60-1/2")	13, 17
D10184	L. H. Wheel Spindle	5, 9, 21	D10273	R. H. Tiller Bar (108-1/2")	13, 17
D10185	Eye Bolt, 5/8	9, 11, 13	D10274	L. H. Tiller Bar (108-1/2")	13, 17
D10187	Stabilizer Wheel Spindle	9, 21	D10275	Rigid Pendant	17
D10188	Stabilizer Wheel Support	9	D10276	Bottom Clip	13, 17
D10189	U-Bolt, 3/4	9, 17	D10277	Top Clip	13, 17
D10190	Eye Bolt, 5/8	9	D10278	Rod, 7/8 x 117"	13, 17
D10191	U-Bolt, 5/8	9	D10282	Rod, 1" x 156"	13, 17
D10192	Stabilizer Wheel Pin	9	D10286	R. H. Angle	15, 17
D10193	7" Stub Member	9	D10287	L. H. Angle	15, 17
D10194	11" Stub Member	9	D10288	Rigid Lower Side	15
D10204	Power Shaft Assembly	13, 17	D10289	Rigid Boot Top Plate	15
D10205	Splined Shaft	13, 17	D10292	Connecting Link	11, 15
D10206	36" Rockshaft	11, 13	D10293	Offset Link	11, 15
D10208	42" Rockshaft	11, 13	D10298	Strap	25
D10209	48" Rockshaft	11, 13	D10299	Dual Cylinder Pin	25
D10211	Trunion	11, 13	D10300	Clamp	40
D10212	Boot Support	11	D10301	Spacer	40
D10213	R. H. Rockshaft Strap	11, 13	D10302	Spacer Plate	40
D10214	L. H. Rockshaft Strap	11, 13	D10303	Upper Spring Plug	40
D10217	Anchor Support	11, 13	D10304	Lower Spring Plug	40
D10218	Spring Mounting Bracket	11, 13	D10305	L. H. Tiller Bar, (84-1/2")	13, 17
D10219	Locknut	11, 13, 19	D10306	R. H. Tiller Bar (96-1/2")	13, 17
D10220	U-Strap	11, 13	D10307	L. H. Tiller Bar, (45-1/2")	13, 17
D10223	Sleeve	7	D10308	R. H. Tiller Bar, (84-1/2")	13, 17
D10225	Pivot Bushing	7	D10309	R. H. Tiller Bar, (87-1/2")	13, 17
D10226	SMV Emblem Bracket	23, 25	D10311	L. H. Tiller Bar, (96-1/2")	13, 17
D10227	Drive Shaft Hanger	7	D10313	Rod, 7/8 x 81"	13, 17
D10228	Main Frame Support Strap	7	D10314	Rod, 7/8 x 105"	13, 17
D10229	Pin	11, 13, 19	D10316	Rod, 7/8 x 132"	13, 17
D10230	Compression Spring	11, 13, 19	D10317	Rod, 7/8 x 144"	13, 17
D10231	Bolt	11, 13	D10319	Rod, 7/8 x 156"	13, 17
D10232	Washer	11, 13, 19	D10320	Rod, 1" x 105"	13, 17
D10233	Spacer	11, 13	D10322	Rod, 1" x 144"	13, 17
D10235	Idler Sprocket	11, 15	D10324	Rod, 1" x 132"	13, 17
D10236	Bearing	11, 15	D10327	Outrigger Cylinder Pin	5, 23, 25
D10237	Spring Trip Boot Chain Assembly	11	D10328	Hose Clamp	23, 25
D10238	Sprocket 16-1/2 Tooth	11	D10329	Rigid Boot Chain Assembly	15
D10239	Spring Trip Boot	11	D10331	Red Reflector	9
D10240	Flangette	11, 15	D10332	Amber Reflector	7
D10241	Spacer	11, 15	D10333	Hydraulic Hose Block	23, 25
D10242	Spring Trip Boot Top Plate	11	D10337	Main Bracket	19
D10243	Spring Trip Lower Side	11	D10338	High Arc Spring Standard	19
D10245	Pointed Shoe	13, 17	D10339	Adjustment Bolt	19
D10248	Stub Point Shoe	13, 17	D10340	U-Bolt, 7/8 Diamond	19
D10250	R. H. Rigid Boot Assembly	17	D10341	Pivot Bolt	19
D10251	Sprocket—12-1/2 Tooth	15	D10342	Tapered Nut	19

PART NO.	DESCRIPTION	PAGE	PART NO.	DESCRIPTION	PAGE
D10343	Pivot Bushing	19	F10043	Spring	29, 31
D10344	Clamp	19	F10044	Piston	29, 31
D10345	U-Strap	19	F10045	O-Ring	29, 31
D10346	Clamp, Flat Spring Standard	20	F10046	Head	31
D10347	Cap, Flat Spring Standard	20	F10047	Tube	31
D10348	Strap, Flat Spring Standard	20	F10048	Seal Kit	31
D10349	Carriage Bolt, 5/8 x 7-3/4	20	F10049	Base	31
D10350	Wrench	19	F10050	Back-up	31
D10351	Flat Spring Standard	20	F10051	Piston	31
D10355	Set Collar	13, 17	F10052	O-Ring	31
D10359	Extended Pendant Mount Angle, L. H.	17	F10053	Head	31
D10360	Extended Pendant Mount Angle, R. H.	17	F10054	Nut	27, 29, 31
D10362	Sleeve	19	F10055	Tie Rod	31
D10363	Washer	19	F10056	Rod	31
D10364	Bushing	19	F10057	Tube	31
D10369	Special Hard Washer	21	F10058	Seal Kit	31
D10370	Yoke and Rectangular Shaft, 30"	13, 17	F10061	Back-up	29
D10371	Yoke and Rectangular Shaft, 48"	13, 17	F10062	O-Ring	29
D10372	Yoke and Rectangular Shaft, 71"	13, 17	F10063	Feed Tube	29
D10373	48" Joint Assembly	13, 17	F10064	Cap Screw, Actuator	29
D10374	71" Joint Assembly	13, 17	F10066	Tie Rod	29
D10379	Shear Bolt	13, 17	F10068	Actuator Stop	29
D10384	Yoke and Rectangular Shaft, 40"	13, 17	F10069	Base	29
D10385	40" Joint Assembly	13, 17	F10070	Head	29
D10394	Spring Retainer	23, 25	F10071	Seal Kit	29
D10464	Box of 10 Shear Bolts & Nuts	13, 17	F10072	Collar	29
F1207	Hose Adapter	33, 35, 37, 39	F10073	Back-up	27, 29
F1211	Tee Coupling	33, 35, 37, 39	F10074	Back-up	29
F1615	Swivel Nut 90° Elbow	33, 35, 37, 39	F10075	O-Ring	27
F1627	Straight Thread Run Tee, 1/2"	39	F10076	O-Ring	29
F1628	Union Tee, 1/2"	33, 35, 37, 39	F10077	Wiper	29
F1629	Union, 1/2"	33, 35, 37, 39	F10078	Tie Rod	29
F10011	Tube	31	F10079	Actuator Stop	29
F10017	Collar	29, 31	F10082	Head	29
F10018	Roll Pin	29, 31	F10083	Rod	29
F10019	Seal Kit	31	F10084	Tube	29
F10020	Srping	31	F10085	Seal Kit	29
F10021	Poppet	29, 31	F10086	Base	27
F10022	O-Ring	29, 31	F10087	Wiper	27
F10023	Seat	29, 31	F10088	Back-up	27
F10024	Back-up	31	F10089	O-Ring	27
F10025	Base	31	F10090	Head	27
F10026	Piston	31	F10091	Tie Rod	27
F10027	O-Ring	31	F10092	Rod Clevis	27
F10028	Wiper	27, 29, 31	F10093	Rod	27
F10029	Back-up	27, 29, 31	F10094	Tube	27
F10030	O-Ring	27, 29, 31	F10095	Seal Kit	27
F10031	Head	31	F10096	Straight Thread O-Ring 90° Elbow	33, 35, 37, 39
F10032	Nut	29, 31	F10098	Straight Thread O-Ring Connector	33, 35, 37, 39
F10033	Tie Rod	31	F10100	Hydraulic Restrictor	33, 35, 37, 39
F10034	Cap Screw	27, 29, 31	F10101	Manifold	33, 35, 37, 39
F10035	Nut	27, 29, 31	F10103	Nut	31
F10036	Rod Clevis	31	F10127	Hose Assembly, 3/8 x 28"	33, 35, 37, 39
F10037	Rod	29, 31	F10128	Hose Assembly, 3/8 x 88"	33, 35, 37, 39
F10038	Tube	31	F10129	Cylinder Pin	23
F10039	Seal Kit	31	F10130	Head	27
F10040	Base	31	F10131	Tie Rod	27
F10041	Back-up	29, 31	F10132	Cap Screw	27
			F10133	Rod Clevis Assembly	27

PART NO.	DESCRIPTION	PAGE	PART NO.	DESCRIPTION	PAGE
F10134	Rod.....	27	K1005	Spring	40
F10135	Tube.....	27	K1029	16" Sweep.....	19, 20
F10136	Seal Kit, 4 x 32	27	K1630	Rod Clevis	29
F10137	Back-up	27	K1633	Piston.....	27, 29
F10138	Nut	27	K1634	Base.....	29
f10139	Base.....	27	K1636	Nut	27, 29, 31
F10140	Piston	27	K1677	Cartridge Assembly	29
F10141	O-Ring.....	27	K1678	Cylinder Pin	23, 25
F10142	Head	27	K2189	Slow Moving Vehicle Emblem	23, 25
F10143	Nut.....	27	K3031	Safety Stop Snapper Pin Assembly.....	7
F10144	Tie Rod	27	K3073	Wheel, 15 x 10	21
F10145	Rod.....	27	L320	Plow Bolt, 7/16.....	19, 20
F10146	Tube.....	27	R812	Quick Disconnect Yoke	13, 17
F10147	Seal Kit, 5 x 16	27	R816	Cross Kit.....	13, 17
F10148	Cylinder Pin.....	25	R4300SW	Washer.....	13, 17
F10150	Cylinder Pin.....	23			
F10151	Tie Rod	27			
F10152	Rod Clevis Assembly.....	27			
F10153	Rod.....	27			
F10154	Tube.....	27			
F10161	Rod.....	31			
F10162	Tie Rod	31			
F10163	Head	31			
F10164	Piston	31			
F10165	Back-up.....	31			
F10166	O-Ring	31			
F10167	Base.....	31			
F10168	Hose Assy., 3/8 100R2 x 48"	33, 35, 37, 39			
F10169	Hose Assy., 3/8 100R2 x 54"	39			
F10170	Hose Assy., 3/8 100R2 x 104"	33, 35, 37			
F10171	Hose Assy., 3/8 100R2 x 124"	33, 35, 37, 39			
F10172	Hose Assy., 3/8 100R2 x 156"	33			
F10173	Hose Assy., 3/8 100R2 x 180"	33, 35, 37			
F10174	Hose Assy., 3/8 100R2 x 200"	33, 35, 37			
F10175	Hose Assy., 3/8 100R2 x 216"	33, 35, 37, 39			
F10176	Hose Assy., 3/8 100R2 x 240"	33, 35, 37, 39			
F10186	O-Ring.....	33, 35, 37, 39			
F10187	Tube.....	29			
F10188	Sequence Valve	33, 35, 37, 39, 41			
F10191	Spring	29			
F10192	O-Ring	29			
F10193	Back-up Ring.....	29			
F10194	O-Ring	29			
F10195	Back-up Ring.....	29			
F10200	3 x 8 Cylinder.....	23, 31, 33, 35, 37			
F10201	3-1/4 x 8 Cylinder	23, 31, 33, 35, 37			
F10202	3-1/2 x 8 Cylinder	31, 39			
F10203	3-3/4 x 8 Cylinder	31, 39			
F10204	3-1/2 x 8 Cylinder with Stop..	23, 29, 33, 35, 37			
F10205	4 x 8 Cylinder w/stop.....	29, 39			
F10206	4 x 16 Cylinder.....	27, 39			
F10207	4 x 32 Cylinder.....	27, 39			
F10208	5 x 16 Cylinder	23, 27, 33, 35, 37			
F10209	5 x 32 Cylinder	23, 27, 33, 35, 37			
F10210	Body and Metering Spool.....	41			
F10217	Metering Spring	41			
F10236	Pilot Plug Assembly	41			
F10237	Adjusting Plug.....	41			
F10238	Internal Check Valve Cartridge.....	41			
F10239	External Check Valve	41			
F10240	Sequence Valve Seal Kit.....	41			