

PARTS CATALOG

D300

ROD TILLER

Serial No. 001 to _____

revised 4/81



Tillage Tool Group

Garfield, WA
(509) 635-1321

Windom, Minn.
(507) 831-4381

New Albany, Miss.
(601) 534-9541

CAUTION

BLOCK SECURELY

Do not place yourself under any equipment suspended hydraulically, with mechanical stops, jacks or hoists, without blocking securely.

Make sure machine cannot roll.

J. E. LOVE CO. WARRANTY

The J. E. Love Company warrants that it will repair F.O.B. its factory or furnish without charge F.O.B. its factory, a similar part to replace any material in its machinery which within one year after date of retail delivery is proved to the satisfaction of the Company to have been defective at the time it was delivered. Provided that all parts claimed defective shall be returned, properly identified, to the Company's branch having jurisdiction over the territory, charges prepaid.

This warranty to repairs applies only to new and unused machinery, which after shipment from the factory of the Company, has not been altered, changed, repaired or treated in any manner whatsoever, and does not extend to equipment or implements not manufactured by the J. E. Love Company, although sold or operated with the Company's machinery.

THIS WARRANTY TO REPAIR IS THE ONLY WARRANTY EITHER EXPRESS, IMPLIED OR STATUTORY, UPON WHICH SAID MACHINERY IS SOLD. SPECIFICALLY, THE J. E. LOVE COMPANY DISCLAIMS ANY IMPLIED WARRANTY OF MERCHANTABILITY OR IMPLIED WARRANTY OF FITNESS FOR PURPOSE.

The Company's liability in connection with this transaction is expressly limited to the repair or replacement of defective parts; all other damages and warranties, statutory or otherwise, being hereby expressly waived by the purchaser.

No representative of the Company has the authority to change this warranty or this contract in any manner whatsoever, and no attempt to repair or promise to repair or improve the machinery covered by this contract by any representative of the Company shall waive any consideration of the contract or change or extend this warranty in any manner whatsoever.

The J. E. Love Company shall in no event be responsible or liable in damages for losses, delays or nonperformance caused by or due to current energy, fuel or material shortages or due to Labor Contracts beyond the control of the Company.



FEMA SEAL OF QUALITY

J. E. Love Company products carry the Farm Equipment Manufacturers Association "Seal of Quality" shown above. This seal identifies the J. E. Love Company as a manufacturer who has met the rigid manufacturing and service qualifying standards set by the Association, so is privileged to apply the "Seal of Quality" to its products.

TABLE OF CONTENTS

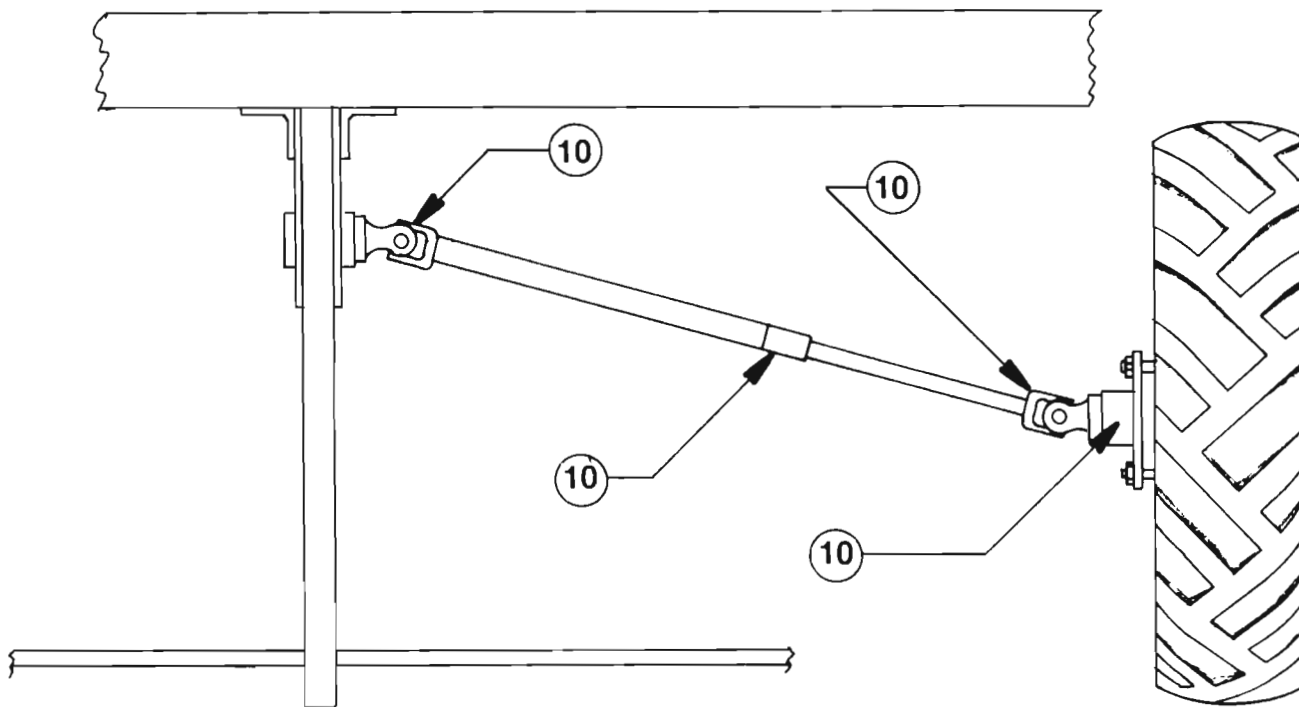
D300 ROD TILLER

Page	Item
1	Caution Warning
2	Warranty and FEMA Seal
3	Table of Contents
4	Lubrication Chart
5	Outrigger Wheel Package Parts
7	Main Frame
9	Outrigger Lift and Wheel Cylinders
11	Spring Trip Boot Assembly
13	Spring Trip Pendant, Drives and Shoes
15	Rigid Boot Assembly
17	Rigid Pendant, Drives and Shoes
19	Spring Trip Chisel Standard
20	Rigid Chisel Standard
21	Hub, Wheel and Spindles
23	Hydraulic Cylinders, Tie Rod
25	Hydraulic Cylinders, Tie Rod, Master
27	Hydraulic Cylinders, Tie Rod, Slave
29	Hydraulic Hose and Fittings, 29'
31	Hydraulic Hose and Fittings, 32' and 36'
32	Hose Support
33	Decals
35	Numerical Cross Reference

Lubrication

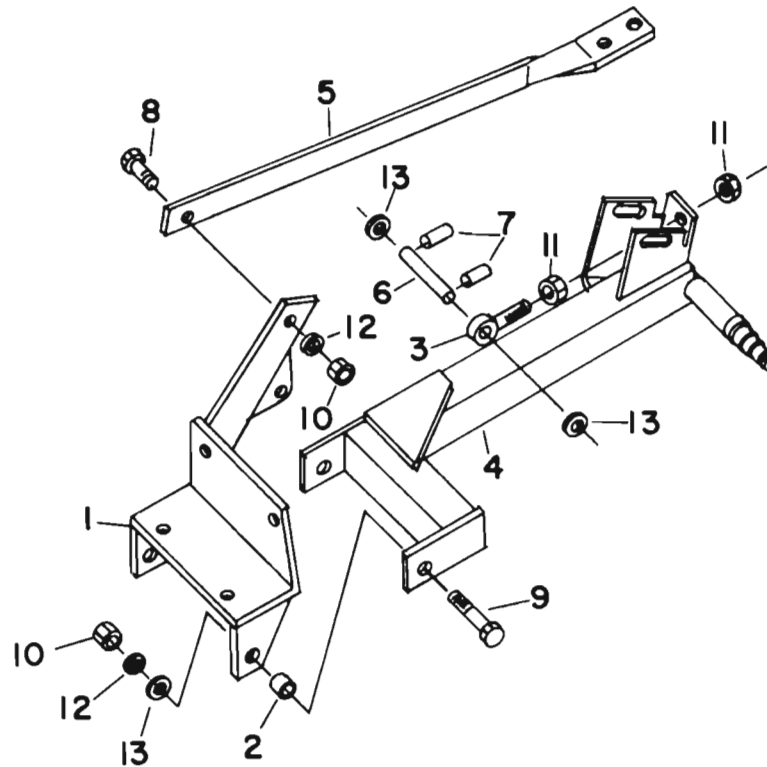
⚠ CAUTION: To avoid injury, always stop tractor, lower rod weeder, and stop tractor engine before lubricating implement.

TYPICAL GREASE LOCATIONS: The lubrication points shown below are the only areas that need lubrication on this implement. Make sure grease fittings are firmly installed and free of dirt before lubricating.



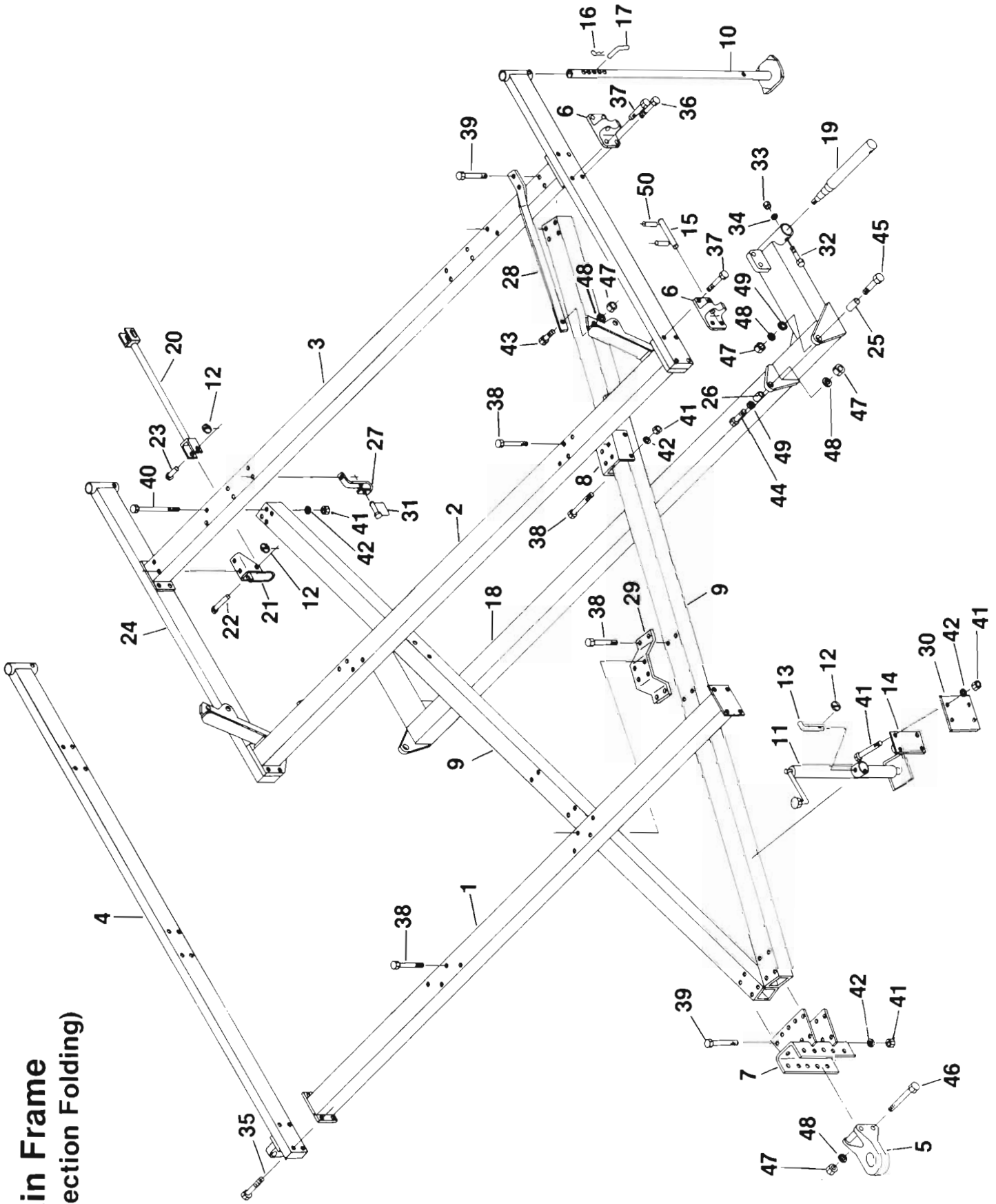
Lubricate with multi-purpose type grease at hourly intervals indicated.

OUTRIGGER WHEEL PACKAGE PARTS



KEY	PART NO.	DESCRIPTION
1	D10162	R.H. Wheel Support
	D10181	L.H. Wheel Support
2	D10163	O.R. Hinge Bushing
3	D10165	Eyebolt, 1"
4	D10164	R.H. Wheel Spindle
	D10184	L.H. Wheel Spindle
5	D10183	O.R. Support Strap
6	D10327	Outrigger Cylinder Pin
7		Spring Pin, 1/4 x 1-3/4
8		1-8 UNC x 2-1/2 Cap Screw
9		1-8 UNC x 3-1/4 Cap Screw
10		1-8 UNC Hex Nut
11		1-8 Hex Jam Nut
12		1" Lock Washer
13		1" SAE Washer

Main Frame (3-Section Folding)

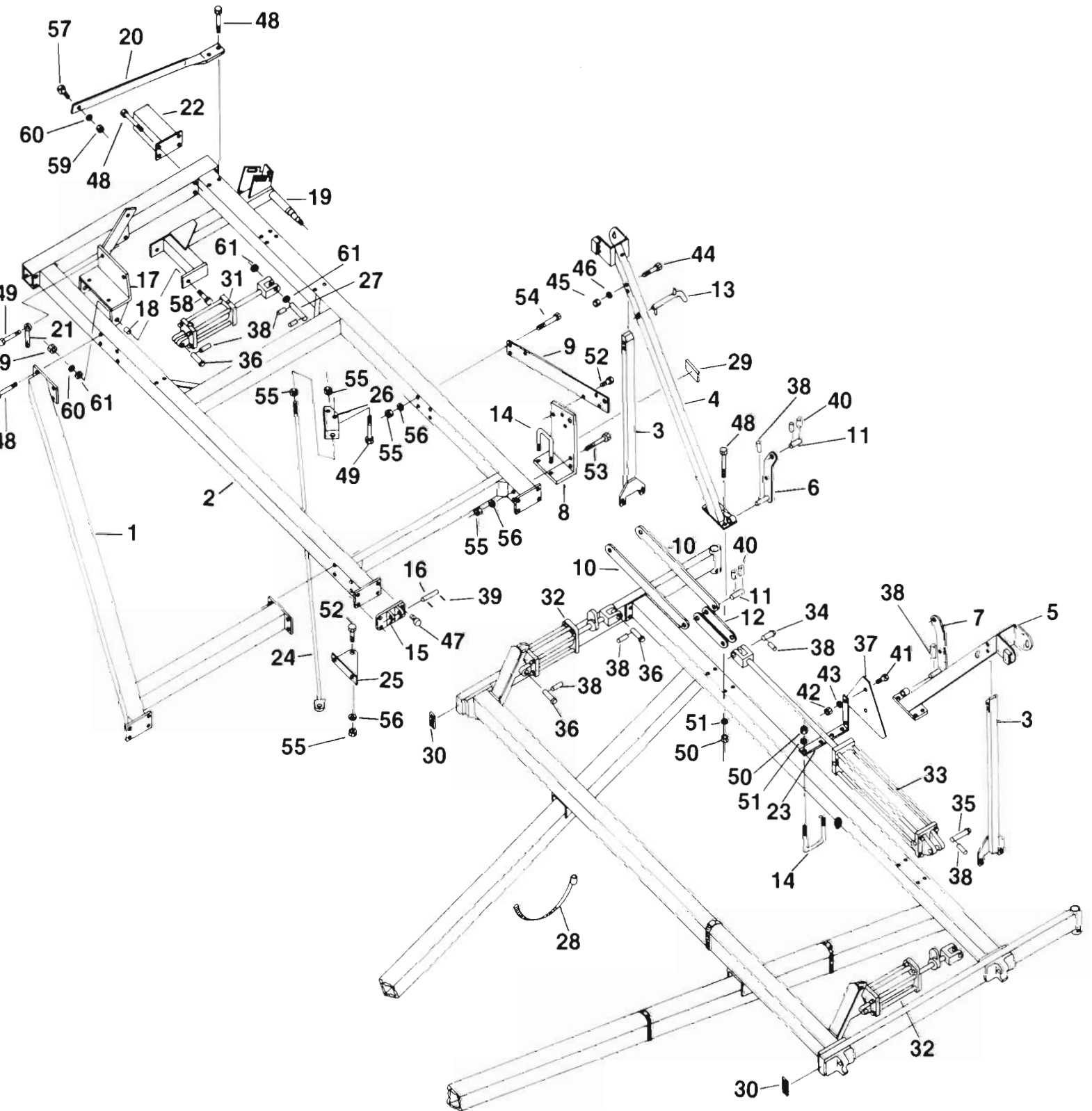


MAIN FRAME

(3 SECTION FOLDING)

KEY	PART NO.	DESCRIPTION
1	D10002	Main Frame Front Tube
2	D10003	Main Frame Center Tube
3	D10004	Main Frame Rear Tube
4	D10006	Right Hand Main Frame End
	D10007	Left Hand Main Frame End
5	D10078	Hitch Link
6	D10080	Outrigger Hinge
7	D10083	Hitch Bracket, 4 x 4
8	D10084	Hitch Channel
9	D10085	Tube Hitch, 4 x 4
10	D10087	Rear Stand
11	D10088	Jack Assembly
12	D10089	Quick Lock Pin
13	D10090	Jack Pin
14	D10091	Jack Support
15	D10133	Hinge Pin
16	D10137	Locking Pin
17	D10139	Rear Stand Pin
18	D10175	Axle Rockshaft
19	D10176	Spindle
20	D10177	Lock-up Strut
21	D10178	Lock-up Anchor
22	D10179	Long Pin
23	D10180	Short Pin
24	D10203	Main Frame End
25	D10223	Sleeve
26	D10225	Pivot Bushing
27	D10227	Drive Shaft Hanger
28	D10228	Main Frame Support Strap
29	D10326	Front Tongue Support, 4 x 4
30	D10382	Jack Attaching Plate
31	K3031	Snapper Pin
32		1/2-13 UNC x 3-1/2 Cap Screw
33		1/2-13 UNC Hex Nut
34		1/2 Lock Washer
35		5/8-11 UNC x 3-1/2 Cap Screw
36		5/8-11 UNC x 4 Cap Screw
37		5/8-11 UNC x 4-1/2 Cap Screw
38		5/8-11 UNC x 5-1/2 Cap Screw
39		5/8-11 UNC x 6 Cap Screw
40		5/8-11 UNC x 9 Cap Screw
41		5/8-11 UNC Hex Nut
42		5/8 Lock Washer
43		1-8 UNC x 2-1/2 Cap Screw
44		1-8 UNC x 3-1/4 Cap Screw
45		1-8 UNC x 3-3/4 Cap Screw
46		1-8 UNC x 7 Cap Screw
47		1-8 UNC Hex Nut
48		1" Lock Washer
49		1" SAE Washer
50		Spring Pin, 5/16 x 1-3/4

Outrigger Lift & Wheel Cylinders (3-Section Folding)

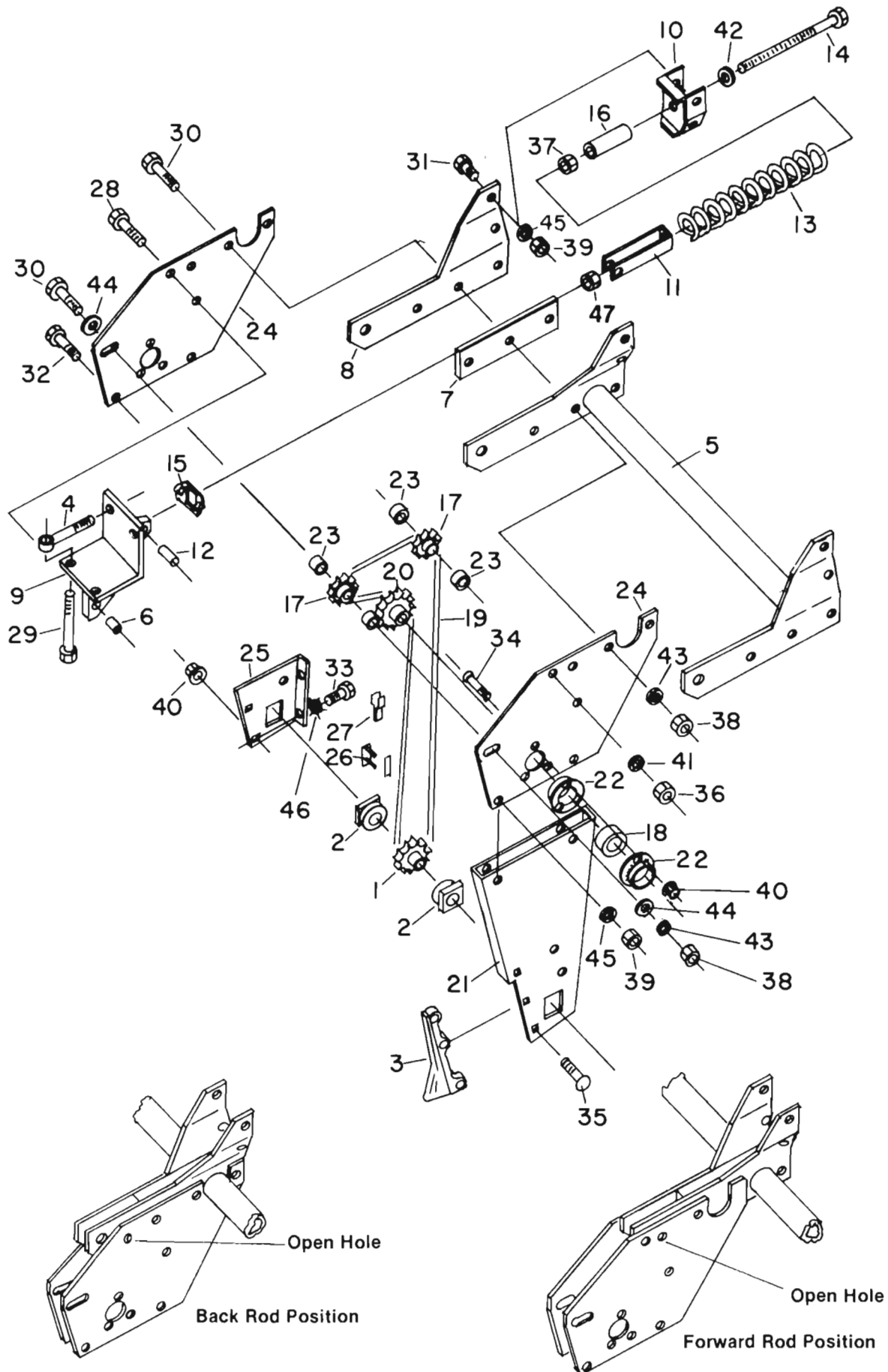


OUTRIGGER LIFT & WHEEL CYLINDERS

(3 SECTION FOLDING)

KEY	PART NO.	DESCRIPTION	KEY	PART NO.	DESCRIPTION
1	D10016	A Frame	40		Spring Pin, 5/16 x 2
2	D10019	Outrigger, 8'	41		1/4-20 UNC x 3/4 Cap Screw
	D10020	Outrigger, 10'	42		1/4-20 UNC Hex Nut
3	D10045	Outrigger Support	43		1/4 Lock Washer
4	D10046	Right Hand Outrigger Stop	44		1/2-13 UNC x 3-1/4 Cap Screw
5	D10047	Left Hand Outrigger Stop	45		1/2-13 UNC Hex Nut
6	D10059	Right Hand Lift Arm	46		1/2 Lock Washer
7	D10060	Left Hand Lift Arm	47		5/8-11 UNC x 2 Cap Screw
8	D10061	Right Hand Angle	48		5/8-11 UNC x 5-1/2 Cap Screw
	D10062	Left Hand Angle	49		5/8-11 UNC x 6 Cap Screw
9	D10063	O.R. Lift Strap	50		5/8-11 UNC Hex Nut
10	D10064	Lift Strap	51		5/8 Lock Washer
11	D10065	Pin	52		3/4-10 UNC x 2 Cap Screw
12	D10066	Lift Link	53		3/4-10 UNC x 5-1/2 Cap Screw
13	D10067	Pin Assembly	54		3/4-10 UNC x 6 Cap Screw
14	D10068	U-Bolt	55		3/4-10 UNC Hex Nut
15	D10079	Main Frame Hinge	56		3/4 Lock Washer
16	D10133	Hinge Pin	57		1-8 UNC x 2-1/2 Cap Screw
17	D10162	R.H. Wheel Support	58		1-8 UNC x 3-1/4 Cap Screw
	D10181	L.H. Wheel Support	59		1-8 UNC Hex Nut
18	D10163	Outrigger Hinge Bushing	60		1" Lock Washer
19	D10164	Right Hand Wheel Spindle	61		1" SAE Washer
	D10184	Left Hand Wheel Spindle			
20	D10183	O.R. Support Strap			
21	D10185	Eye Bolt, 5/8			
22	D10193	7" Stub Member			
	D10194	11" Stub Member			
23	D10226	SMV Emblem Bracket			
24	D10284	Truss Rod			
25	D10295	Front Right Hand Anchor			
	D10294	Front Left Hand Anchor			
26	D10297	Rear Right Hand Anchor			
	D10296	Rear Left Hand Anchor			
27	D10327	Outrigger Cylinder Pin			
28	D10328	Hose Clamp			
29	D10331	Red Reflector			
30	D10332	Amber Reflector			
31	F10201	3-1/4 x 8 Cylinder			
32	F10204	3-1/2 x 8 Cylinder with Stop			
33	F10207	4 x 32 Cylinder			
	F10209	5 x 32 Cylinder			
34	F10129	Clevis Pin			
35	F10150	Clevis Pin			
	F10129	Clevis Pin			
36	K1678	Clevis Pin			
37	K2189	Slow Moving Vehicle Emblem			
38		Spring Pin, 1/4 x 1-3/4			
39		Spring Pin, 5/16 x 1-3/4			

SPRING TRIP BOOT ASSEMBLY

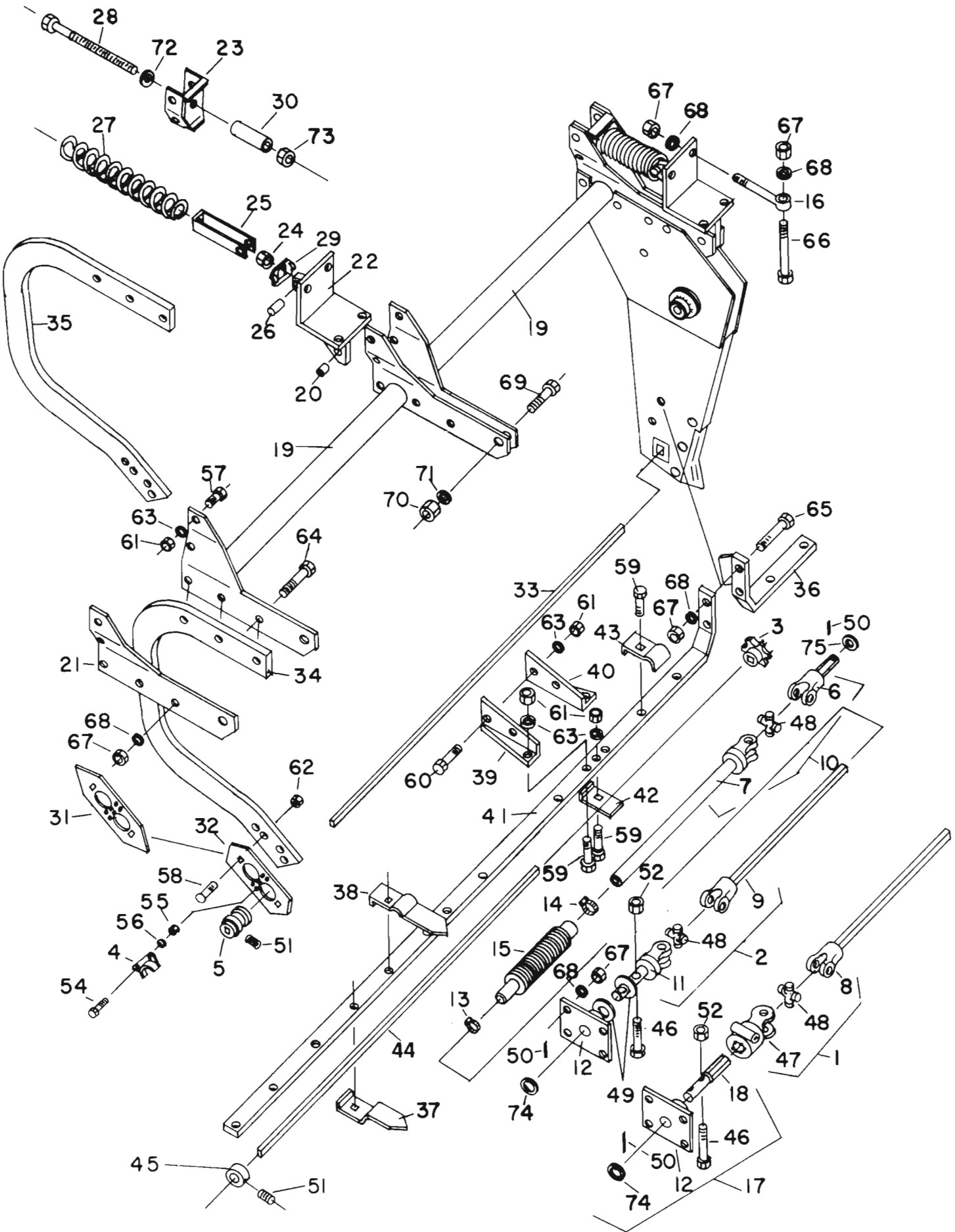


SPRING TRIP BOOT ASSEMBLY

(3 SECTION FOLDING)

KEY	PART NO.	DESCRIPTION
1	D10072	Lower Sprocket, 1"
	D10075	Lower Sprocket, 7/8"
2	D10073	Bearing
3	D10081	Boot Point
4	D10185	Eye Bolt, 5/8"
5	D10206	36" Rockshaft
	D10208	42" Rockshaft
	D10209	48" Rockshaft
6	D10211	Trunion
7	D10212	Boot Support
8	D10213	R.H. Rockshaft Strap
	D10214	L.H. Rockshaft Strap
9	D10217	Anchor Support
10	D10218	Spring Mounting Bracket
11	D10220	U-Strap
12	D10229	Pin
13	D10230	Compression Spring
14	D10231	Bolt
15	D10232	Washer
16	D10233	Spacer
17	D10235	Idler Sprocket, 1" Hex Bore
18	D10236	Bearing
19	D10237	Spring Trip Boot Chain Assembly
20	D10238	Sprocket, 16-1/2 Tooth
21	D10239	Spring Trip Boot
22	D10240	Flangette
23	D10241	Spacer
24	D10242	Spring Trip Boot Top Plate
25	D10243	Spring Trip Boot Lower Side
26	D10292	Connecting Link
27	D10293	Offset Link
28		3/4-10 UNC x 3 Cap Screw
29		5/8-11 UNC x 6 Cap Screw
30		5/8-11 UNC x 3 Cap Screw
31		1/2-13 UNC x 1-1/4 Cap Screw
32		1/2-13 UNC x 2-3/4 Cap Screw
33		3/8-16 UNC x 5/8 Cap Screw
34		3/8-16 UNC x 1 Carriage Screw
35		3/8-16 UNC x 2 Carriage Screw
36		3/4-10 UNC Hex Nut
37		3/4-10 UNC Hex Jam Nut
38		5/8-11 UNC Hex Nut
39		1/2-13 UNC Hex Nut
40		3/8-16 UNC Whiz Nut
41		3/4 Lock Washer
42		3/4 Standard Flat Washer
43		5/8 Lock Washer
44		5/8 Standard Flat Washer
45		1/2 Lock Washer
46		3/8 External Tooth Lock Washer
47	D10219	Locknut

SPRING TRIP PENDANT, DRIVES & SHOES

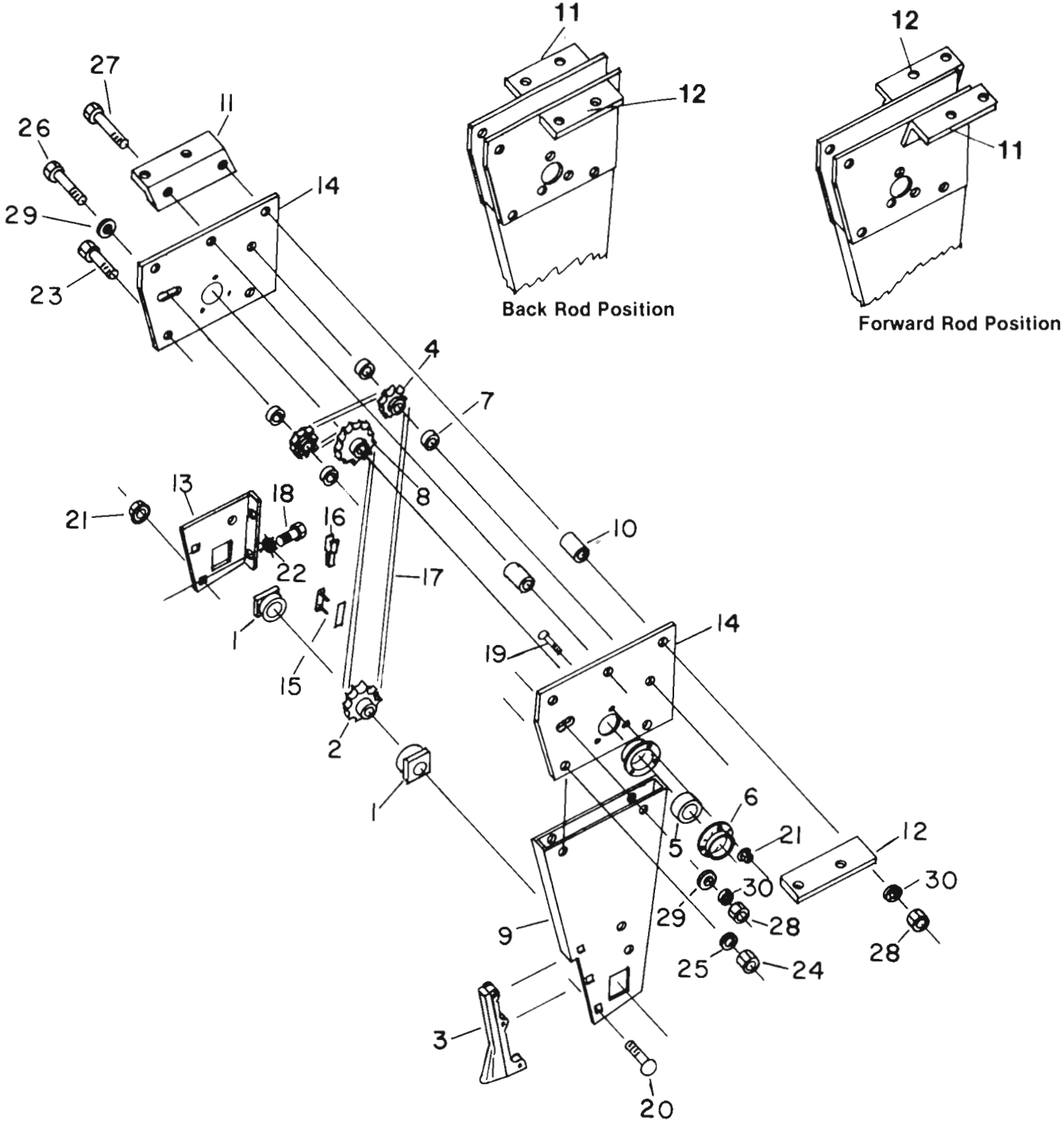


SPRING TRIP PENDANT, DRIVE & SHOES

(3 SECTION FOLDING)

KEY	PART NO.	DESCRIPTION	KEY	PART NO.	DESCRIPTION
1	D10022	Joint Assy., Q.D. to Rectangular Shaft	41	D10267	R. H. Tiller Bar, (48-1/2")
2	D10374	71" Joint Assembly		D10271	R. H. Tiller Bar, (90-1/2")
	D10385	40" Joint Assembly		D10308	R. H. Tiller Bar, (84-1/2")
3	D10072	Lower Sprocket, 1"		D10309	R. H. Tiller Bar, (87-1/2")
	D10075	Lower Sprocket, 7/8"		D10310	R. H. Tiller Bar, (102-1/2")
4	D10074	Bearing Block		D10268	L. H. Tiller Bar, (48-1/2")
5	D10077	1" Square Spool		D10272	L. H. Tiller Bar, (90-1/2")
6	D10112	Hex Shaft & Yoke		D10305	L. H. Tiller Bar, (84-1/2")
7	D10114	Yoke with Tube & Rectangular Sleeve		D10307	L. H. Tiller Bar, (45-1/2")
8	D10117	Yoke & Rectangular Shaft, 56'		D10312	L. H. Tiller Bar, (102-1/2")
9	D10372	Yoke & Rectangular Shaft, 71"	42	D10276	Bottom Clip
	D10384	Yoke & Rectangular Shaft, 40"	43	D10277	Top Clip
10	D10119	Joint Assembly, Boot Input	44	D10279	Rod, 7/8 x 147"
11	D10120	Yoke & Shear Pin Shaft		D10314	Rod, 7/8 x 105"
12	D10122	Shear Pin Drive Plate		D10315	Rod, 7/8 x 123"
13	D10143	Hose Clamp		D10317	Rod, 7/8 x 144"
14	D10144	Hose Clamp	45	D10355	Set Collar
15	D10145	Rubber Boot	46	D10379	Shear Bolt and Nut
16	D10185	Eye Bolt, 5/8"		D10464	Box of 10 Sheer Bolts and Nuts
17	D10204	Shaft Assembly	47	R812	Quick Disconnect Yoke
18	D10205	Splined Shaft	48	R816	Cross Kit
19	D10206	36" Rockshaft	49	R4300SW	Washer
	D10208	42" Rockshaft	50		Spring Pin, 1/4 x 2
	D10209	48" Rockshaft	51		3/8-16 UNC x 1/2 Hex Socket Set Screw
20	D10211	Trunion	52		5/16-18 UNC Hex Locknut
21	D10213	R.H. Rockshaft Strap	54		3/8-16 UNC x 1-1/4 Cap Screw
	D10214	L.H. Rockshaft Strap	55		3/8-16 UNC Hex Nut
22	D10217	Anchor Support	56		3/8 Lock Washer
23	D10218	Spring Mounting Bracket	57		1/2-13 UNC x 1-1/4 Cap Screw
24	D10219	Locknut	58		1/2-13 UNC x 1-3/4 Grade 5 Carriage Screw
25	D10220	U-Strap			
26	D10229	Pin	59		1/2-13 UNC x 1-3/4 Cap Screw
27	D10230	Compression Spring	60		1/2-13 UNC x 2-1/2 Cap Screw
28	D10231	Bolt	61		1/2-13 UNC Hex Nut
29	D10232	Washer	62		1/2-13 UNC Hex Self Locknut
30	D10233	Spacer	63		1/2 Lock Washer
31	D10245	Pointed Shoe	64		5/8-11 UNC x 2-1/2 Cap Screw
32	D10248	Stub Point Shoe	65		5/8-11 UNC x 3-3/4 Cap Screw
33	D10320	Rod, 1 x 105"	66		5/8-11 UNC x 6 Cap Screw
	D10321	Rod, 1 x 123"	67		5/8-11 UNC Hex Nut
	D10322	Rod, 1 x 144"	68		5/8 Lock Washer
	D10323	Rod, 1 x 147"	69		3/4-10 UNC x 2-1/2 Cap Screw, Rear Position
34	D10256	Short Pendant			
35	D10257	Long Pendant			
36	D10259	L.H. Tiller Bar (12-1/2")			
	D10258	R.H. Tiller Bar (12-1/2")	70		3/4-10 UNC Hex Nut
37	D10263	Bottom Chisel	71		3/4 Lock Washer
38	D10264	Top Chisel	72		3/4 Flat Washer
39	D10265	Tiller Bar Mounting Angle, R.H.	73		3/4-10 UNC Hex Jam Nut
40	D10266	Tiller Bar Mounting Angle, L.H.	74		1-1/4 SAE Washer
			75		Machinery Bushing, 0.060 x 1-5/32 x 1-3/4

RIGID BOOT ASSEMBLY

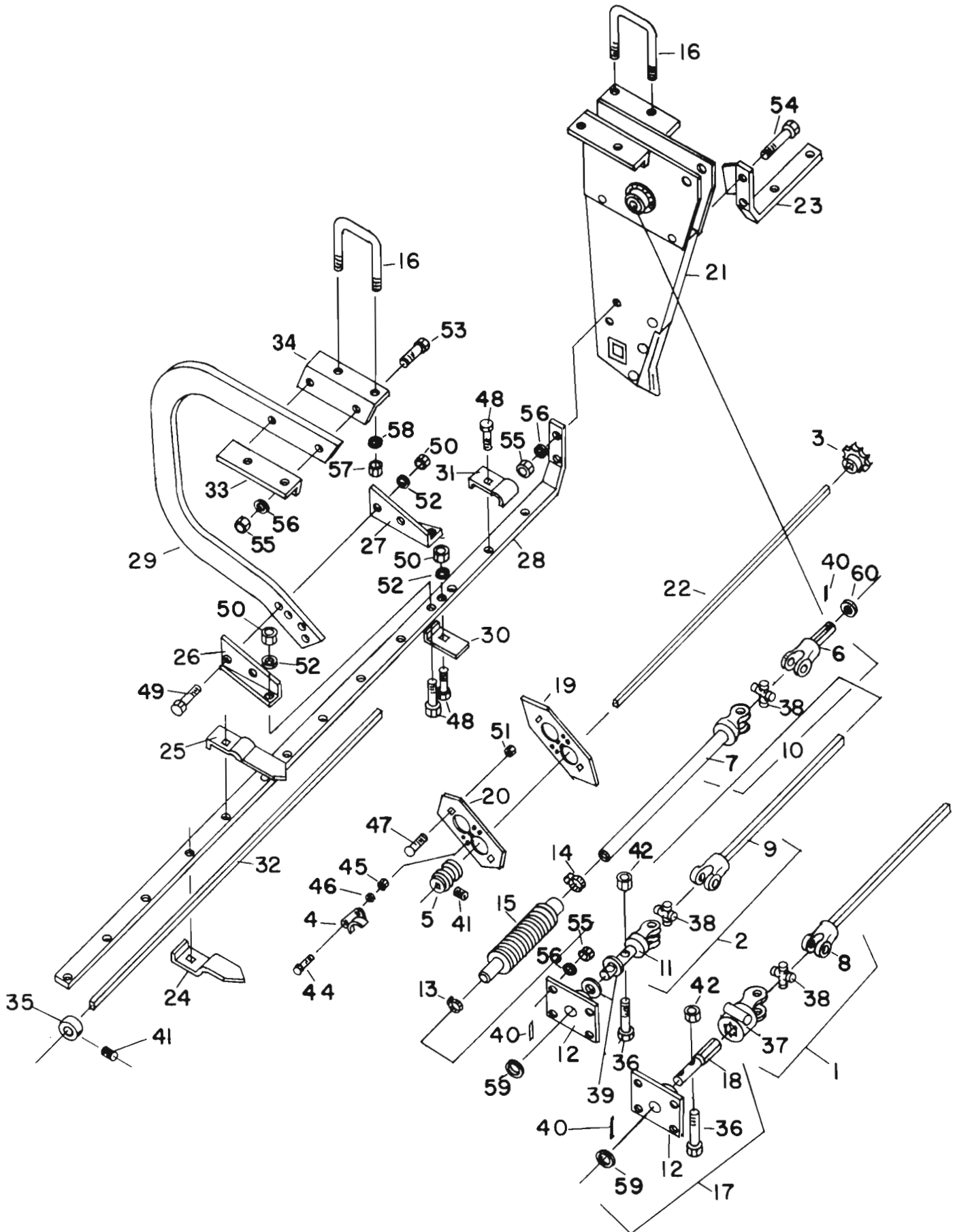


RIGID BOOT ASSEMBLY

(3 SECTION FOLDING)

KEY	PART NO.	DESCRIPTION
1	D10073	Bearing
2	D10075	Lower Sprocket, 7/8"
	D10072	Lower Sprocket, 1"
3	D10081	Boot Point
4	D10235	Idler Sprocket, 1" Hex Bore
5	D10236	Bearing
6	D10240	Flangette
7	D10241	Spacer
8	D10251	Sprocket, 12-1/2 Teeth
9	D10252	Rigid Boot
10	D10253	Spacer
11	D10286	R. H. Angle
12	D10287	L. H. Angle
13	D10288	Rigid Lower Side
14	D10289	Rigid Boot Top Plate
15	D10292	Connecting Link
16	D10293	Offset Link
17	D10329	Rigid Boot Chain Assembly
18		3/8-16 UNC x 5/8 Cap Screw
19		3/8-16 UNC x 1 Carriage Screw
20		3/8-16 UNC x 2 Carriage Screw
21		3/8-16 UNC Whiz Nut
22		3/8 External Tooth Lock Washer
23		1/2-13 UNC x 2-3/4 Cap Screw
24		1/2-13 UNC Hex Nut
25		1/2 Lock Washer
26		5/8-11 UNC x 3 Cap Screw
27		5/8-11 UNC x 4 Cap Screw
28		5/8-11 UNC Hex Nut
29		5/8 Flat Washer
30		5/8 Lock Washer

RIGID PENDANT, DRIVES & SHOES

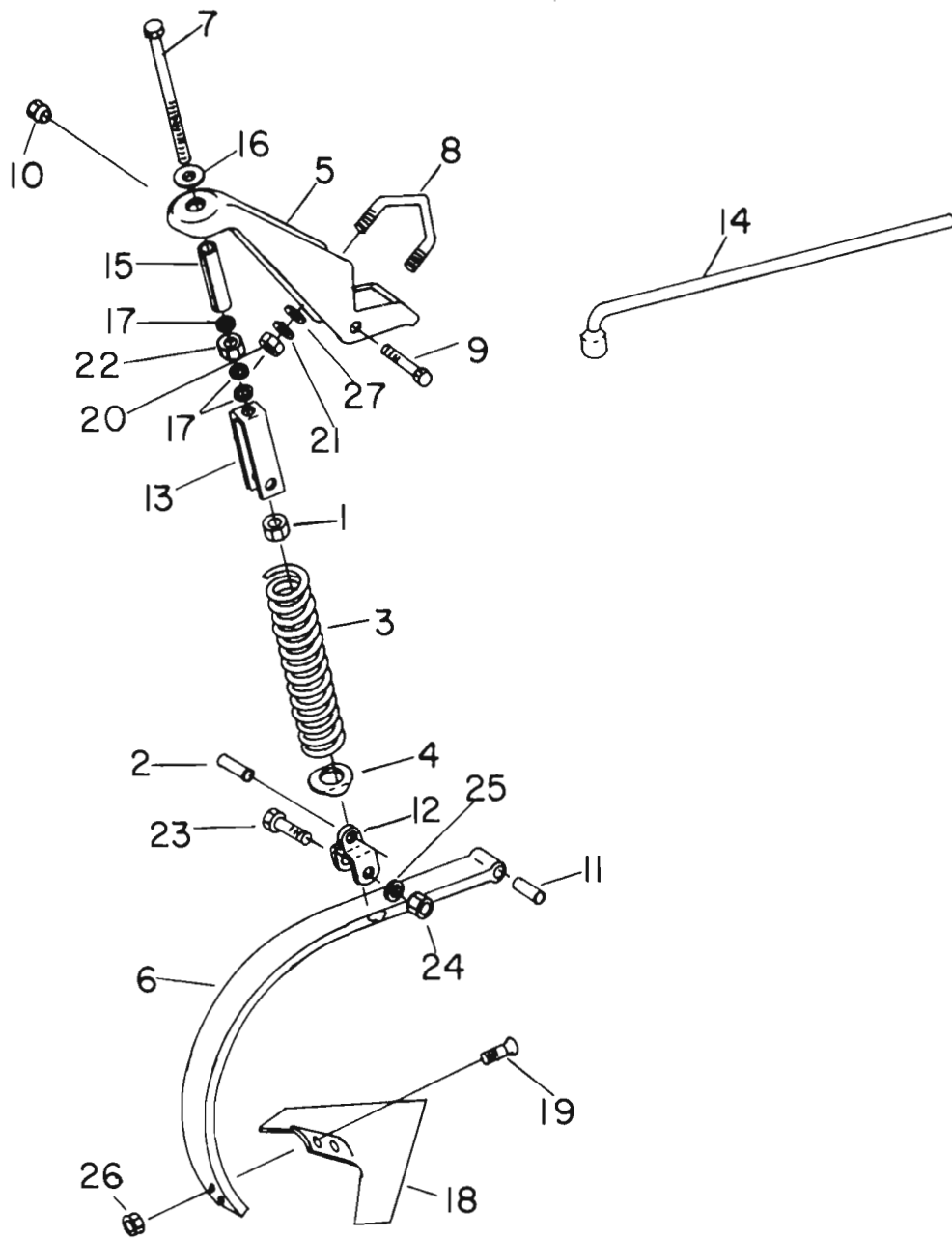


RIGID PENDANT, DRIVES & SHOES

(3 SECTION FOLDING)

KEY	PART NO.	DESCRIPTION	KEY	PART NO.	DESCRIPTION
1	D10022	Joint Assy., Q.D. to Rectangular Shaft	34	D10287	L.H. Angle
2	D10374	71" Joint Assembly		D10359	Extended Pendant Mount Angle, L.H.
	D10385	40" Joint Assembly	35	D10355	Set Collar
3	D10072	Lower Sprocket, 1"	36	D10379	Shear Bolt and Nut
	D10075	Lower Sprocket, 7/8"		D10464	Box of 10 Shear Bolts and Nuts
4	D10074	Bearing Block	37	R812	Q. D. Yoke
5	D10077	1" Square Spool	38	R816	Cross Kit
6	D10112	Hex Shaft & Yoke	39	R4300SW	Washer
7	D10114	Yoke with Tube & Rectangular Sleeve	40		Spring Pin, 1/4 x 2
8	D10117	Yoke & Rectangular Shaft, 56"	41		3/8-16 UNC x 1/2 Hex Socket Set Screw
9	D10372	Yoke & Rectangular Shaft, 71"	42		5/16-18 UNC Hex Locknut
	D10384	Yoke & Rectangular Shaft, 40"	43		1/4 Lock Washer
10	D10119	Joint Assembly Boot Input	44		3/8-16 UNC x 1-1/4 Cap Screw
11	D10120	Yoke & Shear Pin Shaft	45		3/8-16 UNC Hex Nut
12	D10122	Shear Pin Drive Plate	46		3/8 Lock Washer
13	D10143	Hose Clamp	47		1/2-13 UNC x 1-3/4 Grade 5 Carriage Screw
14	D10144	Hose Clamp	48		1/2-13 UNC x 1-3/4 Cap Screw
15	D10145	Rubber Boot	49		1/2-13 UNC x 2-1/2 Cap Screw
16	D10189	U-Bolt, 3/4	50		1/2-13 UNC Hex Nut
17	D10204	Power Shaft Assembly	51		1/2-13 UNC Hex Self Lock Nut
18	D10205	Splined Shaft	52		1/2 Lock Washer
19	D10245	Pointed Shoe	53		5/8-11 UNC x 2-3/4 Cap Screw
20	D10248	Stub Point Shoe	54		5/8-11 UNC x 3-3/4 Cap Screw
21	D10250	R.H. Rigid Boot Assembly	55		5/8-11 UNC Hex Nut
22	D10320	Rod, 1 x 105"	56		5/8 Lock Washer
	D10321	Rod, 1 x 123"	57		3/4-10 UNC Hex Nut
	D10322	Rod, 1 x 144"	58		3/4 Lock Washer
	D10323	Rod, 1 x 147"	59		1-1/4 SAE Washer
23	D10259	L.H. Tiller Bar (12-1/2")	60		Machinery Bushing, 0.060 x 1-5/32 x 1-3/4
	D10258	R.H. Tiller Bar (12-1/2")			
24	D10263	Bottom Chisel			
25	D10264	Top Chisel			
26	D10265	Tiller Bar Mounting Angle, R.H.			
27	D10266	Tiller Bar Mounting Angle, L.H.			
28	D10267	R. H. Tiller Bar (48-1/2")			
	D10271	R. H. Tiller Bar (90-1/2")			
	D10308	R. H. Tiller Bar (84-1/2")			
	D10309	R. H. Tiller Bar (87-1/2")			
	D10310	R. H. Tiller Bar (102-1/2")			
	D10268	L. H. Tiller Bar (48-1/2")			
	D10272	L. H. Tiller Bar (90-1/2")			
	D10305	L. H. Tiller Bar (84-1/2")			
	D10307	L. H. Tiller Bar (45-1/2")			
	D10312	L. H. Tiller Bar (102-1/2")			
29	D10275	Rigid Pendant			
30	D10276	Bottom Clip			
31	D10277	Top Clip			
32	D10279	Rod, 7/8 x 147"			
	D10314	Rod, 7/8 x 105"			
	D10315	Rod, 7/8 x 123"			
	D10317	Rod, 7/8 x 144"			
33	D10286	R.H. Angle			
	D10360	Extended Pendant Mount Angle, R.H.			

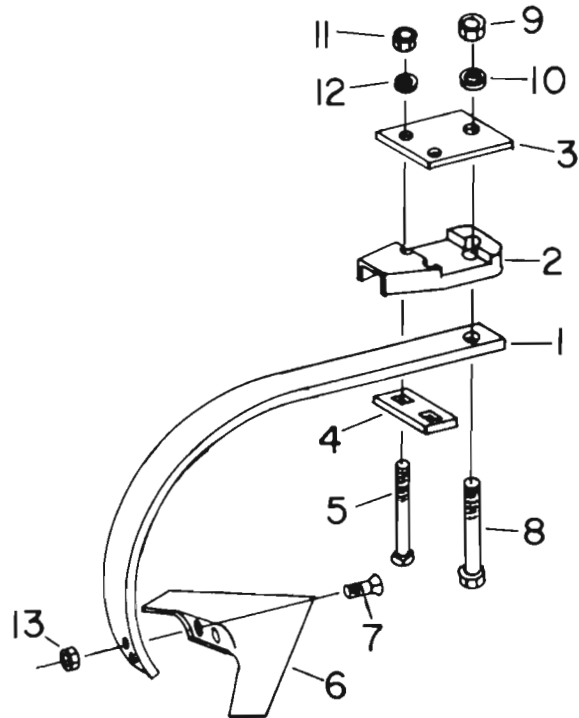
SPRING TRIP CHISEL STANDARD



SPRING TRIP CHISEL STANDARD

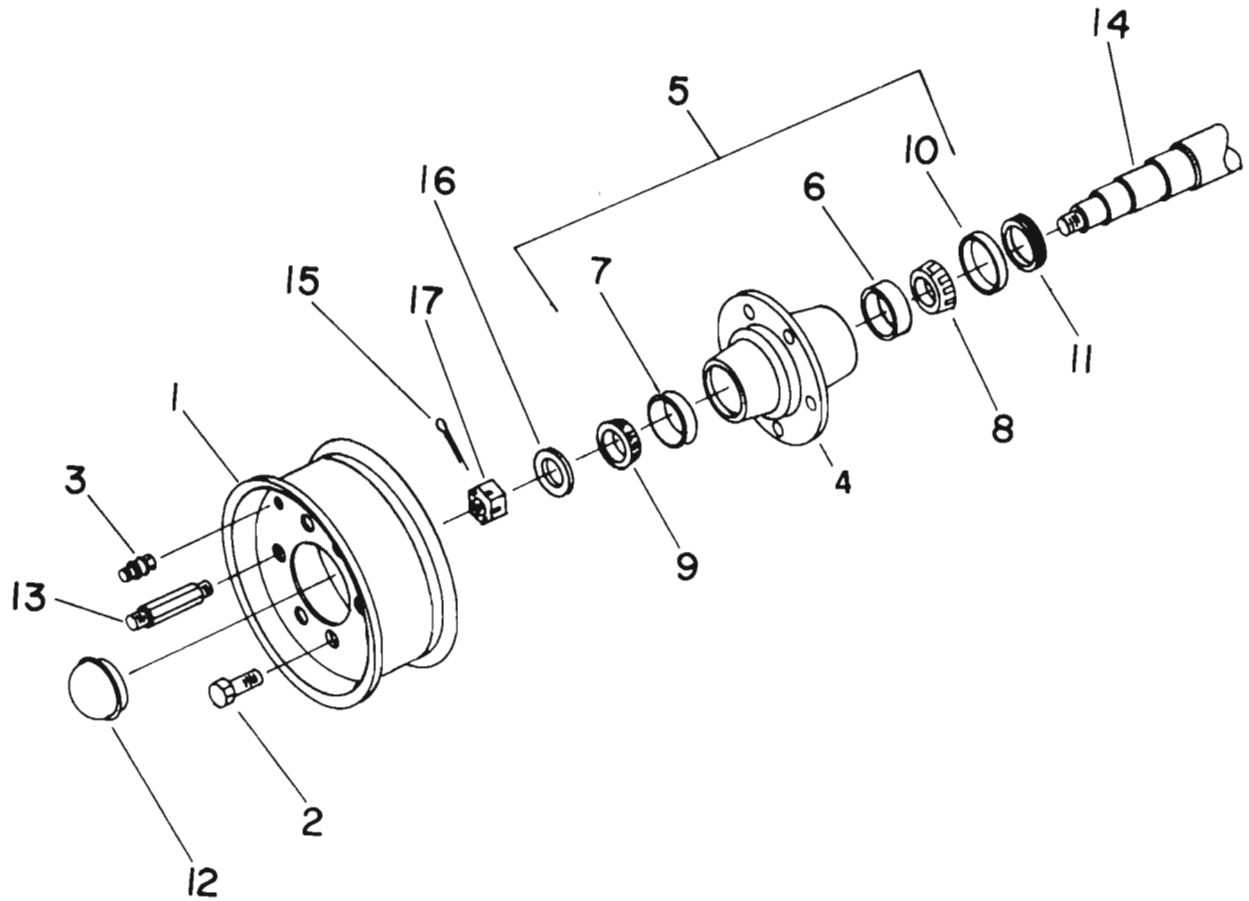
KEY	PART NO.	DESCRIPTION
1	D10219	3/4 Lock Nut
2	D10229	Pin
3	D10230	Compression Spring
4	D10232	Washer
5	D10337	Main Bracket
6	D10338	High Arc Spring Standard
7	D10339	Adjustment Bolt
8	D10340	U-Bolt, 7/8"
9	D10341	Pivot Bolt
10	D10342	Tapered Nut
11	D10343	Pivot Bushing
12	D10344	Clamp
13	D10345	U-Strap
14	D10350	Wrench
15	D10362	Sleeve
16	D10363	Washer
17	D10364	Bushing
18	K1029	16" Sweep
19	L320	Plow Bolt, 7/16
20		7/8-9 UNC Hex Nut
21		7/8 Lock Washer
22		3/4-10 UNC Hex Nut
23		5/8-11 UNC x 3-3/4 Cap Screw
24		5/8-11 UNC Hex Nut
25		5/8 Lock Washer
26		7/16-20 UNF Hex Nut
27		Washer, 7/8 I.D. x 1-3/4 O.D. x 0.134

RIGID CHISEL STANDARD



KEY	PART NO.	DESCRIPTION
1	D10351	Flat Spring Standard
2	D10346	Clamp
3	D10347	Cap
4	D10348	Strap
5	D10349	Carriage Bolt
6	K1029	16" Sweep
7	L320	Plow Bolt, 7/16"
8		3/4-10 UNC x 7-1/2 Cap Screw
9		3/4-10 UNC Hex Nut
10		3/4 Lock Washer
11		5/8-11 UNC Hex Nut
12		5/8 Lock Washer
13		7/16-20 UNF Hex Nut

HUB, WHEELS, AND SPINDLES

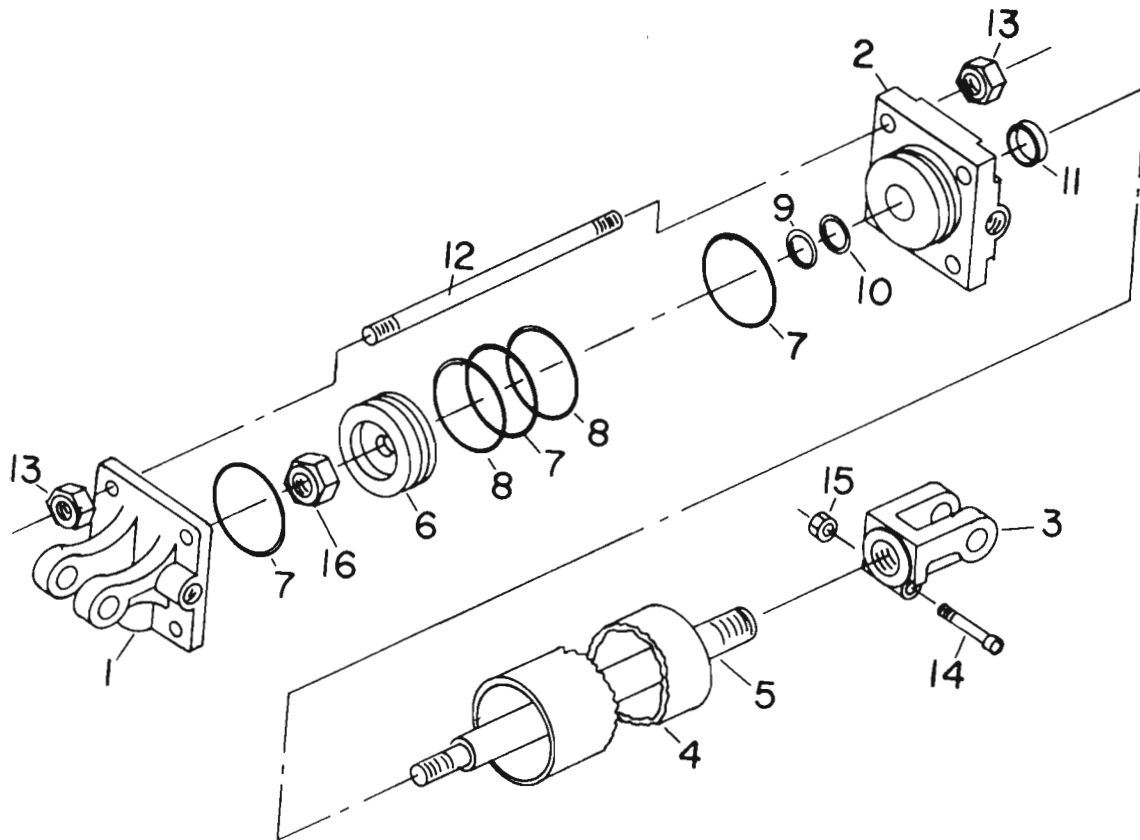


KEY PART NO. DESCRIPTION

KEY	PART NO.	DESCRIPTION
1	A1574	Wheel, 16 x 5.50
	D10110	Wheel, 15 x 5
	K3073	Wheel, 15 x 10
2	B1616	Wheel Bolt
3	D10092	Valve Stem
4		Hub Only, Sub. D10124
5	D10124	Hub with Cups & Sleeve
6	D10125	Inner Cup
7	D10126	Outer Cup
8	D10127	Inner Bearing
9	D10128	Outer Bearing
10	D10129	Wear Sleeve
11	D10130	Seal
12	D10131	Hub Cap
13	D10142	Long Wheel Bolt
	D10146	Short Wheel Bolt
14	D10164	R.H. Wheel Spindle
	D10176	Spindle
	D10184	L.H. Wheel Spindle
15		5/32 x 1-1/4 Cotter Pin
16	D10369	"Special Hard" Washer
17		7/8-14 UNF Slotted Hex Nut

HYRADULIC CYLINDERS, TIE ROD

F10207 (4 x 32) F10209 (5 x 32)



HYDRAULIC CYLINDERS, TIE ROD

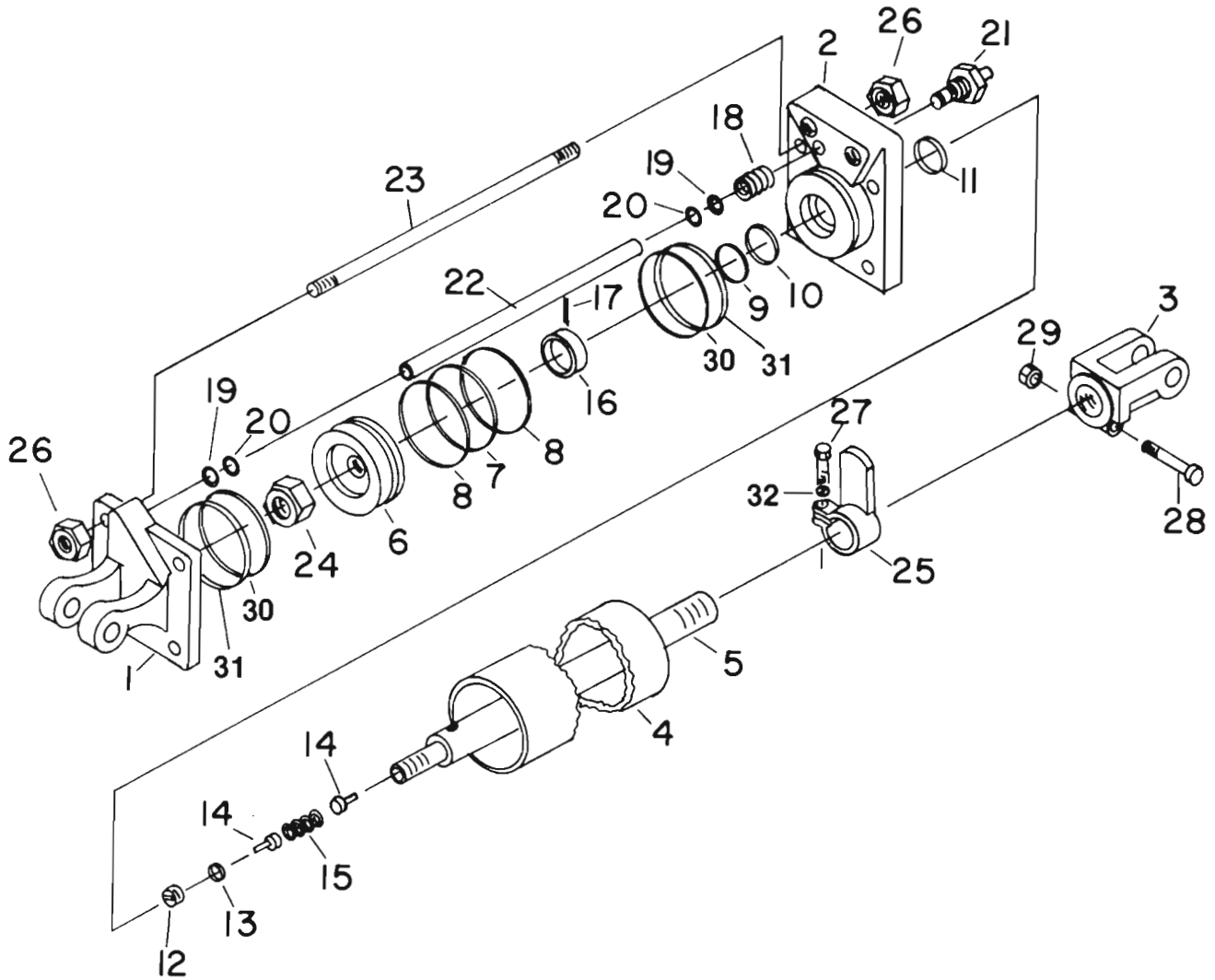
F10207 (4 x 32) F10209 (5 x 32)

KEY	PART NO.	DESCRIPTION	CYLINDER SIZE
1	F10086	Base	4 x 32
	F10139		5 x 32
2	F10130	Head	4 x 32
	F10142		5 x 32
3	F10133	Rod Clevis	4 x 32
	F10152		5 x 32
4	F10135	Tube	4 x 32
	F10154		5 x 32
5	F10134	Rod	4 x 32
	F10153		5 x 32
6	K1633	Piston	4 x 32
	F10140		5 x 32
▶ 7	F10075	O-Ring	4 x 32
	F10141		5 x 32
▶ 8	F10073	Back-up	4 x 32
	F10137		5 x 32
▶ 9	F10089	O-Ring	5 x 32
	F10030		4 x 32
▶ 10	F10088	Back-up	5 x 32
	F10029		4 x 32
▶ 11	F10087	Wiper	5 x 32
	F10028		4 x 32
12	F10131	Tie Rod	4 x 32
	F10151		5 x 32
13	F10054	Nut	4 x 32
	F10143		5 x 32
14	F10132	Cap Screw	4 x 32 & 5 x 32
15	F10035	Nut	4 x 32 & 5 x 32
16	K1636	Nut	4 x 32
	F10138		5 x 32
--	F10136	Seal Kit	4 x 32 & 5 x 32

▶ Included in Seal Kit

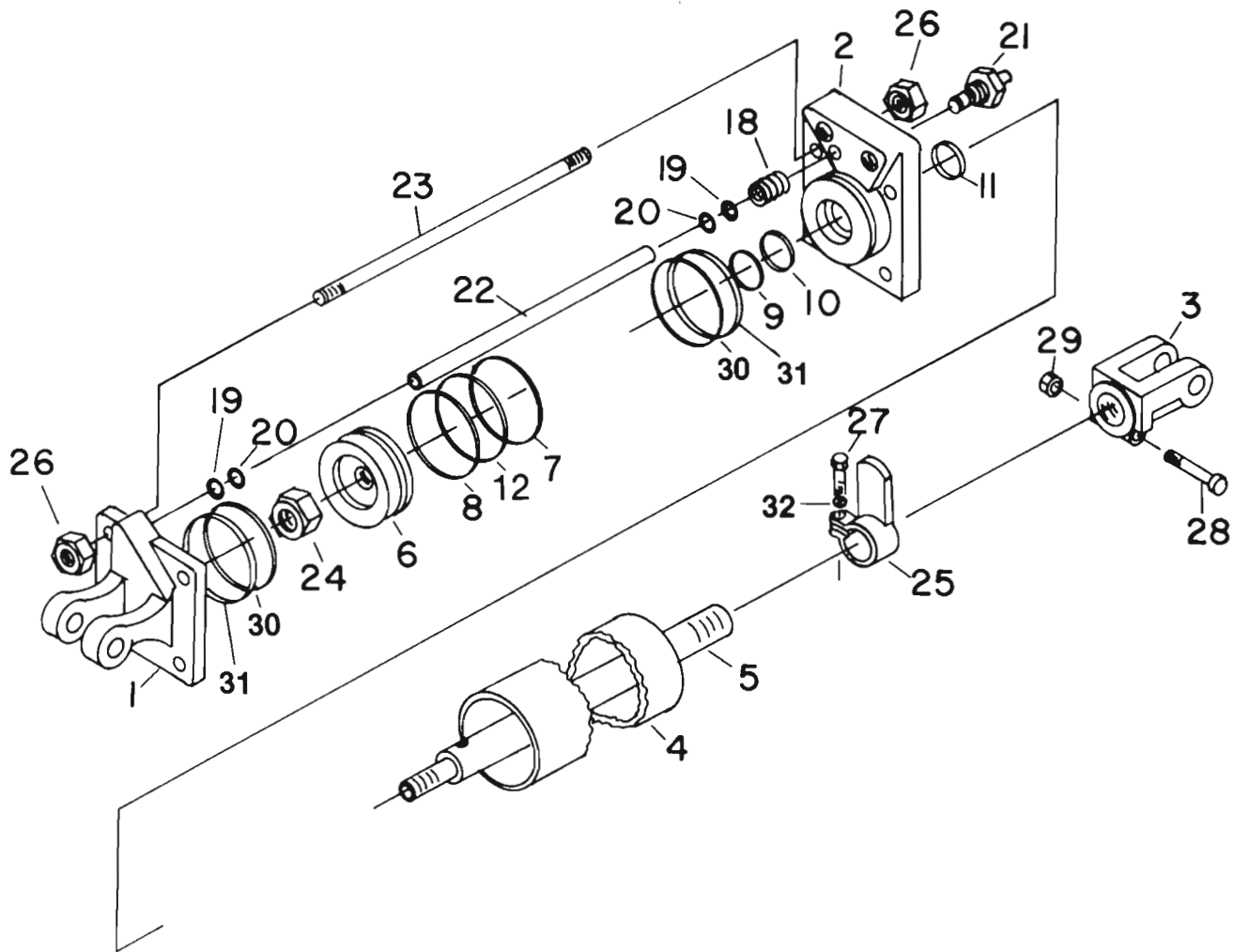
HYDRAULIC CYLINDERS, TIE ROD, MASTER

F10204 (3-1/2 x 8)



HYDRAULIC CYLINDERS, TIE ROD, MASTER

Serial No. D038 up Except D048 to D053
F10304 (3-1/2 x 8)



HYDRAULIC CYLINDERS, TIE ROD, MASTER

Serial No. D001 to D037 plus D052 and D053
F10204 (3-1/2 x 8)

KEY	PART NO.	DESCRIPTION
1	F10069	Base
2	F10070	Head
3	K1630	Rod Clevis
4	F10187	Tube
5	F10037	Rod
6	F10044	Piston
▶ 7	F10045	O-Ring
▶ 8	F10041	Back-up
▶ 9	F10030	O-Ring
▶ 10	F10029	Back-up
▶ 11	F10028	Wiper
12	F10023	Seat
▶ 13	F10022	O-Ring
14	F10021	Poppet
15	F10043	Spring
16	F10017	Collar
17	F10018	Roll Pin
18	F10191	Spring
▶ 19	F10062	O-Ring
▶ 20	F10061	Back-up
21	K1677	Cartridge Assembly
22	F10063	Feed Tube
23	F10066	Tie Rod
24	K1636	Piston Nut
25	F10068	Stop Actuator
26	F10032	Tie Rod Nut
27	F10064	Cap Screw
28	F10034	Cap Screw, Clamp
29	F10035	Nut
▶ 30	F10192	O-Ring
▶ 31	F10193	Back-up
32		5/16 Lock Washer
--	F10071	Seal Kit

▶ Included in Seal Kit

HYDRAULIC CYLINDERS, TIE ROD, MASTER

Serial No. D038 up, Except D048 to D053
F10304 (3-1/2 x 8)

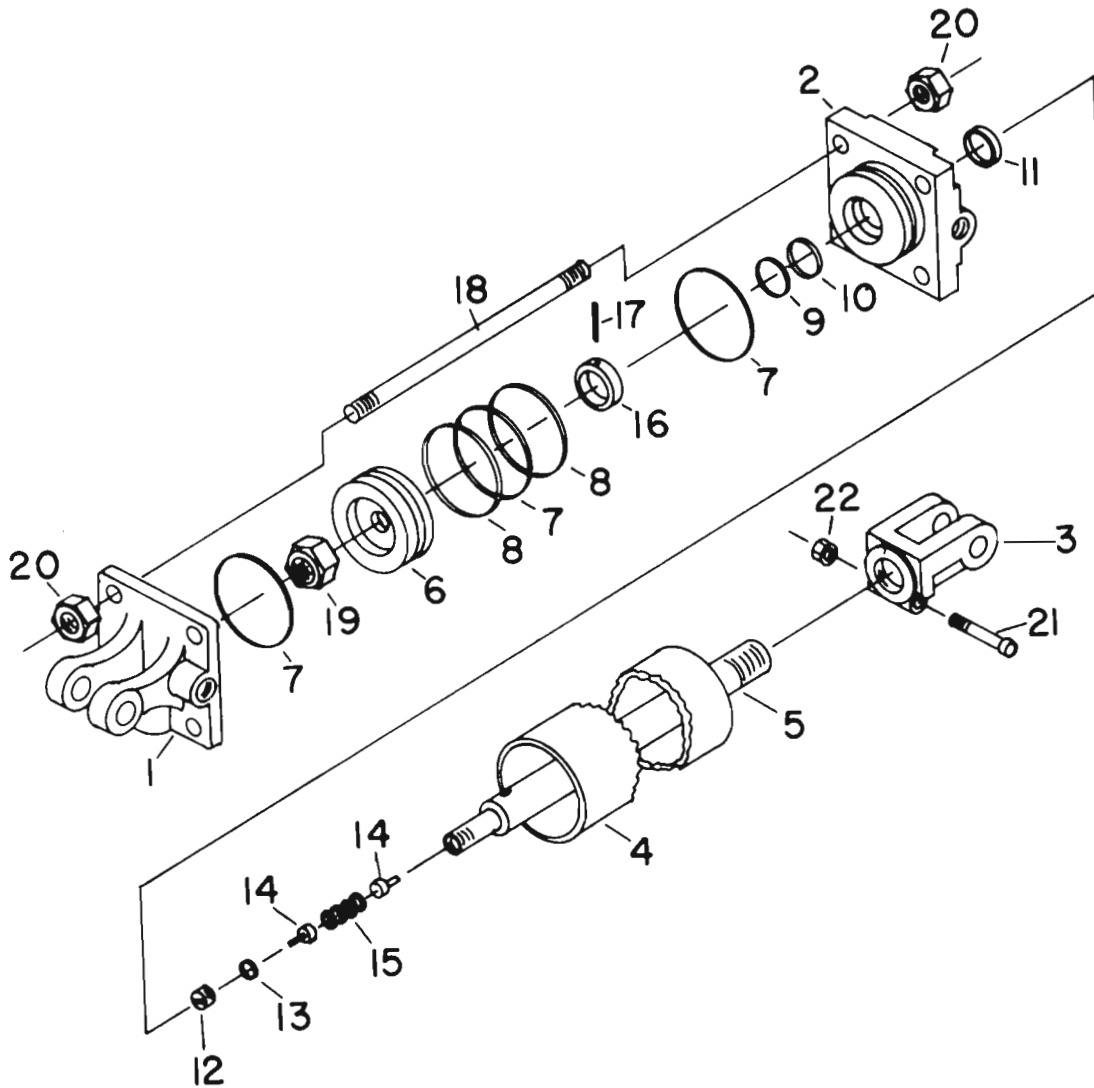
KEY	PART NO.	DESCRIPTION
1	F10069	Base
2	F10070	Head
3	K1630	Rod Clevis
4	F10335	Tube
5	F10329	Rod
6	F10345	Piston
▶ 7	F10298	Teflon Ring
▶ 8	F10314	Wear Ring
▶ 9	F10030	O-Ring
▶ 10	F10029	Back-Up
▶ 11	F10028	Wiper
▶ 12	F10320	O-Ring (Preload)
18	F10191	Spring
▶ 19	F10062	O-Ring
▶ 20	F10061	Back-Up
21	K1677	Cartridge Assembly
22	K1635	Feed Tube
23	F10066	Tie Rod
24	K1636	Piston Nut
25	F10068	Stop Actuator
26	F10032	Tie Rod Nut
27	F10064	Cap Screw
28	F10034	Cap Screw, Clamp
29	F10035	Nut
▶ 30	F10192	O-Ring
▶ 31	F10193	Back-Up
32		5/16 Lock Washer
—	F10308	Seal Kit

▶ Included in Seal Kit

HYDRAULIC CYLINDERS, TIE ROD, SLAVE

Serial No. D001 to D037 Plus D052 and D053

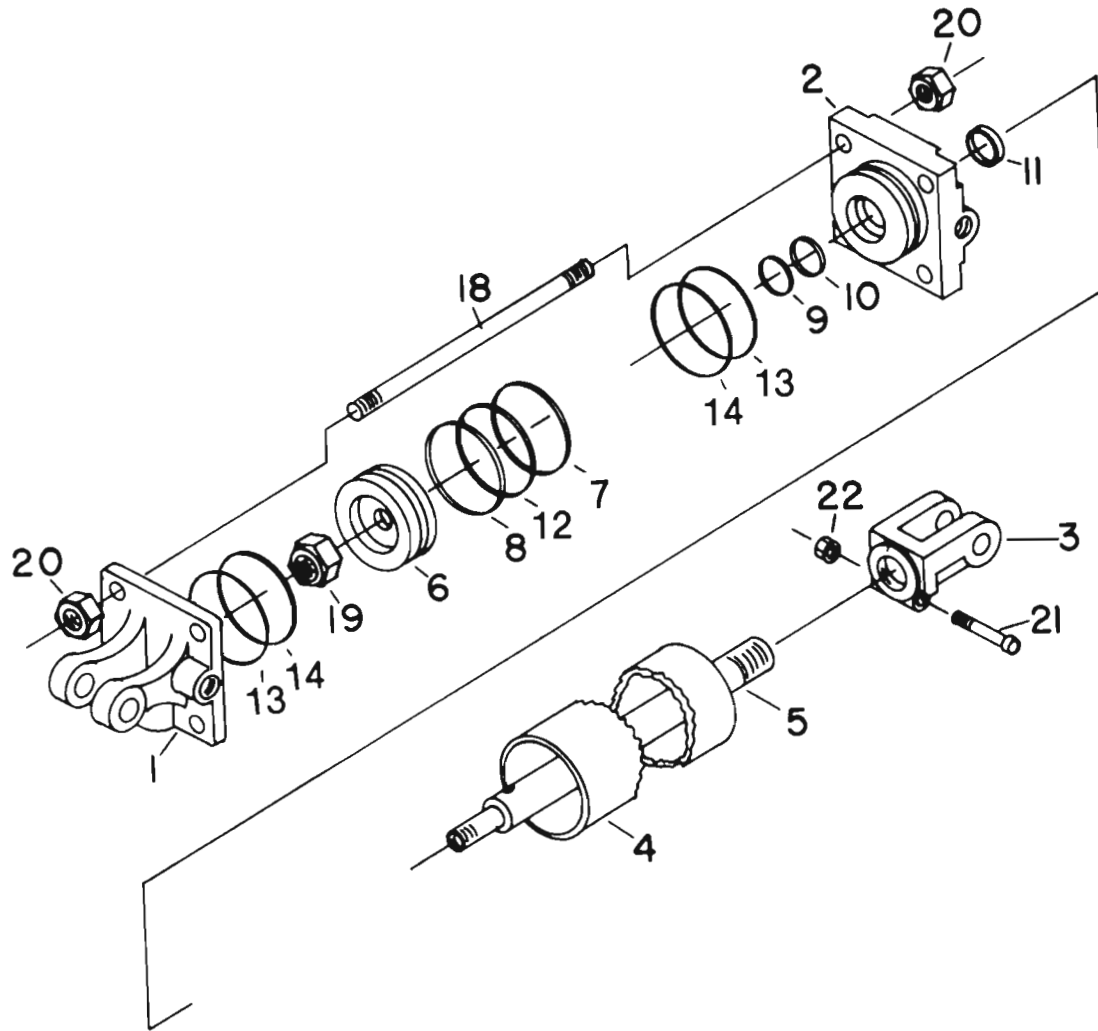
F10201 (3-1/4 x 8)



HYDRAULIC CYLINDERS, TIE ROD, SLAVE

Serial No. D038 Up Except D048 to D053

F10301 (3-1/4 x 8)



HYDRAULIC CYLINDER, TIE ROD, SLAVE

Serial No. D001 to D037 Plus D052 and D053
F10201 (3-1/4 x 8)

KEY	PART NO.	DESCRIPTION
1	F10025	Base
2	F10031	Head
3	F10036	Rod Clevis
4	F10038	Tube
5	F10037	Rod
6	F10026	Piston
▶ 7	F10027	O-Ring
▶ 8	F10024	Back-up
▶ 9	F10030	O-Ring
▶ 10	F10029	Back-up
▶ 11	F10028	Wiper
12	F10023	Seat
▶ 13	F10022	O-Ring
14	F10021	Poppet
15	F10020	Spring
16	F10017	Collar
17	F10018	Roll Pin
18	F10033	Tie Rod
19	K1636	Nut
20	F10032	Nut, Tie Rod
21	F10034	Cap Screw
22	F10035	Nut
--	F10039	Seal Kit

▶ Included in Seal Kit

HYDRAULIC CYLINDER, TIE ROD, SLAVE

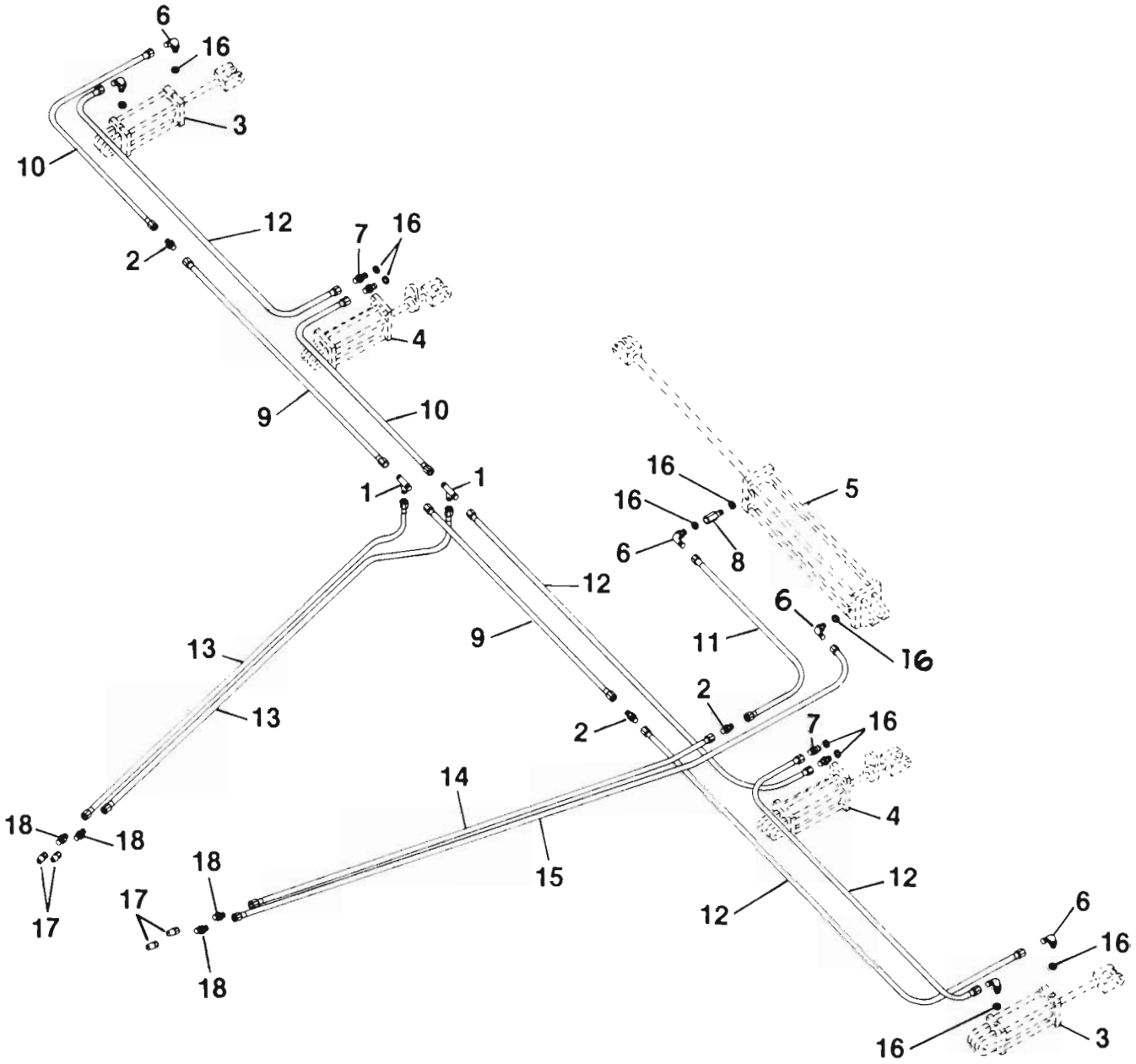
Serial No. D038 Up Except D048 to D053
F10301 (3-1/4 x 8)

KEY	PART NO.	DESCRIPTION
1	F10349	Base
2	F10390	Head
3	K1630	Rod Clevis
4	F10344	Tube
5	F10330	Rod
6	F10344	Piston
▶ 7	F10297	Teflon Ring
▶ 8	F10313	Wear Ring
▶ 9	F10030	O-Ring
▶ 10	F10029	Back-Up
▶ 11	F10028	Wiper
▶ 12	F10319	O-Ring (Preload)
▶ 13	F10294	Back-Up
▶ 14	F10324	O-Ring
18	F10327	Tie Rod
19	K1636	Nut
20	F10032	Nut, Tie Rod
21	F10034	Cap Screw
22	F10035	Nut
—	F10307	Seal Kit

▶ Included in Seal Kit

HYDRAULIC HOSES & FITTINGS

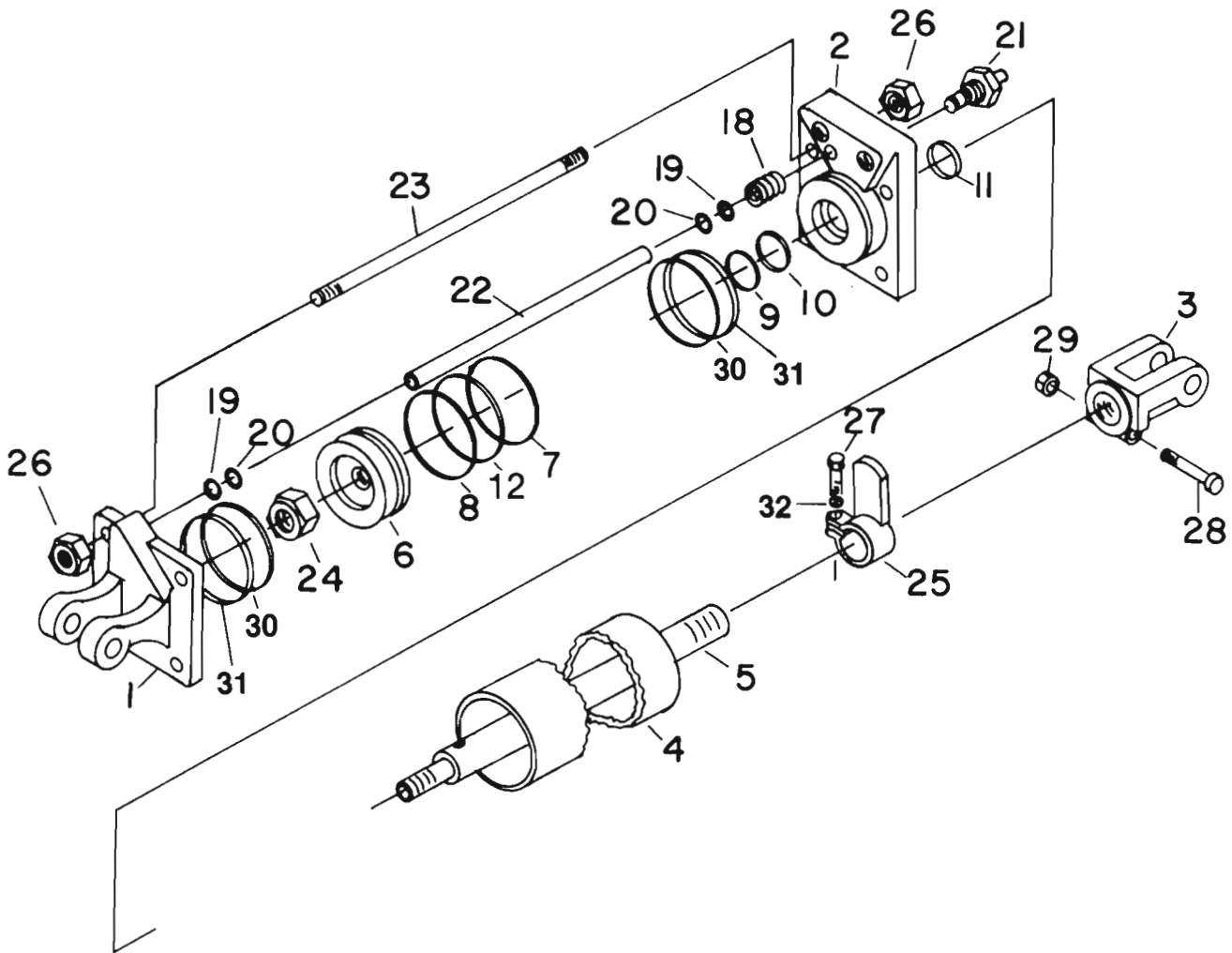
3-Section, 29'



HYDRAULIC CYLINDERS, TIE ROD, MASTER

Serial No. D038 Up Except D048 to D053

F10304 (3-1/2 x 8) F10305 (4 x 8)



HYDRAULIC CYLINDERS, TIE ROD, MASTER

Serial No. D001 to D037, D048 to D053

F10204 (3-1/2 x 8) F10205 (4 x 8)

KEY	PART NO.	DESCRIPTION	CYL. SIZE
1	F10069	Base	3-1/2 x 8
	K1634		4 x 8
2	F10070	Head	3-1/2 x 8
	F10082		4 x 8
3	K1630	Rod Clevis	3-1/2 x 8 & 4 x 8
4	F10187	Tube	3-1/2 x 8
	F10084		4 x 8
5	F10037	Rod	3-1/2 x 8
	F10083		4 x 8
6	F10044	Piston	3-1/2 x 8
	K1633		4 x 8
▶ 7	F10045	O-Ring	3-1/2 x 8
	F10194		4 x 8
▶ 8	F10041	Back-up	3-1/2 x 8
	F10073		4 x 8
▶ 9	F10030	O-Ring	3-1/2 x 8
	F10076		4 x 8
▶ 10	F10029	Back-up	3-1/2 x 8
	F10074		4 x 8
▶ 11	F10028	Wiper	3-1/2 x 8
	F10077		4 x 8
12	F10023	Seat	3-1/2 x 8 & 4 x 8
▶ 13	F10022	O-Ring	3-1/2 x 8 & 4 x 8
14	F10021	Poppet	3-1/2 x 8 & 4 x 8
15	F10043	Spring	3-1/2 x 8 & 4 x 8
16	F10017	Collar	3-1/2 x 8
	F10072		4 x 8
17	F10018	Roll Pin	3-1/2 x 8 & 4 x 8
18	F10191	Spring	3-1/2 x 8 & 4 x 8
▶ 19	F10062	O-Ring	3-1/2 x 8 & 4 x 8
▶ 20	F10061	Back-up	3-1/2 x 8 & 4 x 8
21	K1677	Cartridge Assembly	3-1/2 x 8 & 4 x 8
22	F10063	Feed Tube	3-1/2 x 8 & 4 x 8
23	F10066	Tie Rod	3-1/2 x 8
	F10078		4 x 8
24	K1636	Piston Nut	3-1/2 x 8 & 4 x 8
25	F10068	Stop Actuator	3-1/2 x 8
	F10079		4 x 8
26	F10032	Tie Rod Nut	3-1/2 x 8
	F10054		4 x 8
27	F10064	Cap Screw	3-1/2 x 8 & 4 x 8
28	F10034	Cap Screw, Clamp	3-1/2 x 8 & 4 x 8
29	F10035	Nut	3-1/2 x 8 & 4 x 8
30	F10192	O-Ring	3-1/2 x 8
	F10194		4 x 8
31	F10193	Back-up	3-1/2 x 8
	F10195		4 x 8
32		5/16 Lock Washer	3-1/2 x 8 & 4 x 8
--	F10071	Seal Kit	3-1/2 x 8
	F10085		4 x 8

▶ Included in Seal Kit

HYDRAULIC HOSES & FITTINGS

3 SECTION, 29'

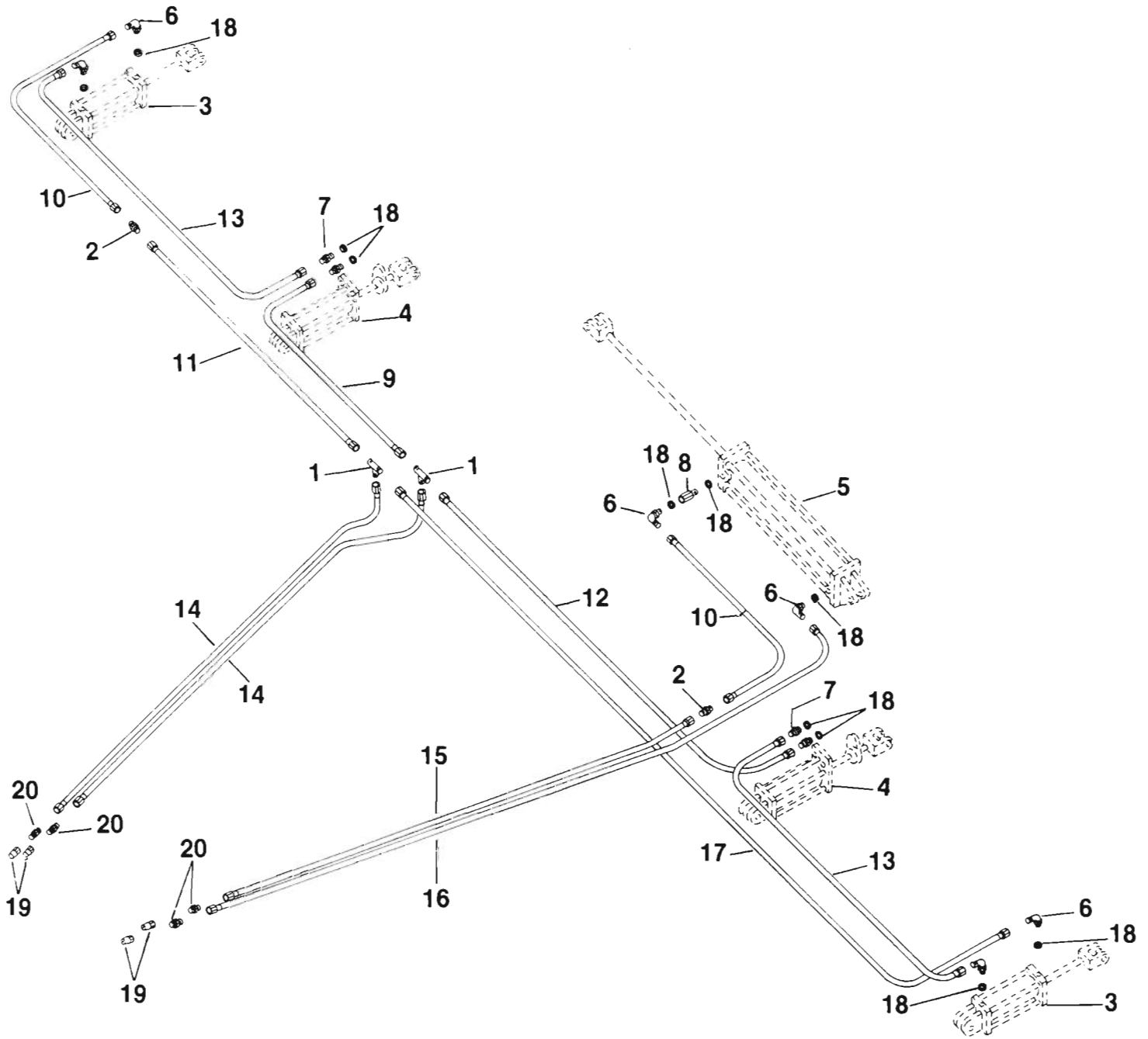
KEY	PART NO.	DESCRIPTION
1	F1628	Union Tee
2	F1629	Union
3	F10201	3-1/4 x 8 Cylinder
4	F10204	3-1/2 x 8 Cylinder with Stop
5	F10207	4 x 32 Cylinder
	F10209	5 x 32 Cylinder
6	F10096	Straight Thread O-Ring 90° Elbow
7	F10098	Straight Thread Connector
8	F10100	Hydraulic Restrictor
9	F10128	Hose Assembly, 88"
10	F10168	Hose Assembly, 48"
11	F10169	Hose Assembly, 54"
12	F10171	Hose Assembly, 124"
13	F10173	Hose Assembly, 180"
14	F10174	Hose Assembly, 200"
15	F10175	Hose Assembly, 216"
▶ 16	F10186	O-Ring, Hydraulic Fitting
17		Coupling, Breakaway, Not Furnished
● 18		Hose Adapter, Not Furnished

▶ Included in F10096 and F10098

● Note: Use F10098 for ORB Body Coupling
Use F1207 for NPT Body Coupling.

Hydraulic Hoses & Fittings

3-Section, 32' & 36'



HYDRAULIC HOSES & FITTINGS

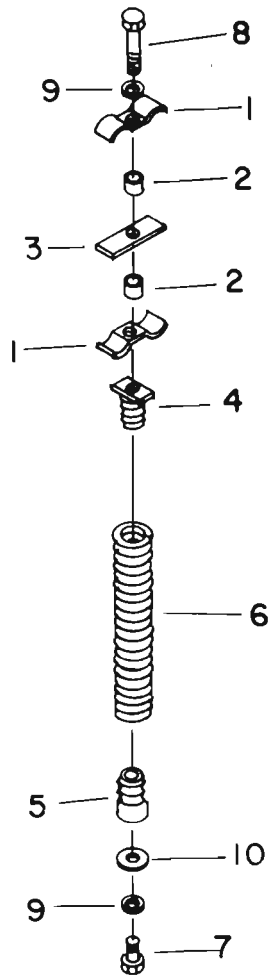
3 SECTION, 32' & 36'

KEY	PART NO.	DESCRIPTION
1	F1628	Union Tee
2	F1629	Union
3	F10201	3-1/4 x 8 Cylinder
4	F10204	3-1/2 x 8 Cylinder with Stop
5	F10207	4 x 32 Cylinder
	F10209	5 x 32 Cylinder
6	F10096	Straight Thread O-Ring 90° Elbow
7	F10098	Straight Thread Connector
8	F10100	Hydraulic Restrictor
9	F10168	Hose Assembly, 48"
10	F10169	Hose Assembly, 54"
11	F10170	Hose Assembly, 104"
12	F10171	Hose Assembly, 124"
13	F10172	Hose Assembly, 156"
14	F10173	Hose Assembly, 180"
15	F10174	Hose Assembly, 200"
16	F10175	Hose Assembly, 216"
17	F10176	Hose Assembly, 240"
▶ 18	F10186	O-Ring, Hydraulic Fitting
19		Coupling, Breakaway, Not furnished
● 20		Hose Adapter, Not Furnished

▶ Included in F10096 & F10098

- Note: Use F10098 for ORB Coupling.
Use F1207 for NPT Body Fitting.

HOSE SUPPORT



KEY	PART NO.	DESCRIPTION
1	D10300	Hose Clamp
2	D10301	Spacer
3	D10302	Spacer Plate
4	D10303	Upper Spring Plug
5	D10304	Lower Spring Plug
6	K1005	Spring
7		7/16-14 UNC x 1-1/2 Cap Screw
8		7/16-14 UNC x 2-3/4 Cap Screw
9		7/16 Lock Washer
10		7/16 Flat Washer

DECALS

PART NO.	MESSAGE
D1	"J. E. LOVE COMPANY"
D80	"WARNING To prepare machine for safe transport: 1. Stop machine and raise O. R. to transport position. 2. Secure raised O. R. with locking pins before transporting. 3. Pin transport wheels in raised position using locks provided. 4. Disconnect rod universal line."
D81	"DANGER Serious injury or death can result from contact with electric lines. Use care when moving or operating this machine near electric lines to avoid contact."
D82	"WARNING To prevent possible injury due to uncontrolled upward tongue movement when unhitching from tractor: 1. Lower jackstands provided at rear of machine, or 2. Unfold O. R. to field position and lower machine to ground."
D83	"WARNING To avoid possible bodily injury, always install transport wheel locks before: 1. Attaching or detaching rod drive line, or 2. Servicing rod drive lines or rod drive chains."
D84	"CAUTION To avoid possible bodily injury, always: 1. Stand clear of machine O. R. and hinge areas when raising, lowering or folding O. R. 2. Stop machine to raise or lower O. R. 3. Lower rear jackstands before unhitching tractor."

NUMERICAL CROSS REFERENCE

(3 SECTION FOLDING)

PART NO.	DESCRIPTION	PAGES	PART NO.	DESCRIPTION	PAGES
A1574	Wheel, 16 x 5.5	21	D10122	Shear Pin Drive Plate	13, 17
B1616	Wheel Bolt	21	D10124	Hub with Cups and Sleeve	21
D1	"LOVE"—Decal	33	D10125	Inner Cup	21
D80	"WARNING"—Decal	33	D10126	Outer Cup	21
D81	"DANGER"—Decal	33	D10127	Inner Bearing	21
D82	"WARNING"—Decal	33	D10128	Outer Bearing	21
D83	"WARNING"—Decal	33	D10129	Wear Sleeve	21
D84	"CAUTION"—Decal	33	D10130	Seal	21
D10002	Main Frame Front Tube	7	D10131	Hub Cap	21
D10003	Main Frame Center Tube	7	D10133	Hinge Pin	7, 9
D10004	Main Frame Rear Tube	7	D10137	Spring Locking Pin	7
D10006	R. H. Main Frame End	7	D10139	Rear Stand Pin	7
D10007	L. H. Main Frame End	7	D10142	Long Wheel Bolt	21
D10016	"A" Frame	9	D10143	Hose Clamp	13, 17
D10019	Outrigger, 8'	9	D10144	Hose Clamp	13, 17
D10020	Outrigger, 10'	9	D10145	Rubber Boot	13, 17
D10022	Joint Assembly, Q. D. to Rect. Shaft	13, 17	D10146	Short Wheel Bolt	21
D10045	Outrigger Support	9	D10162	R. H. Wheel Support	5, 9, 21
D10046	R. H. Outrigger Stop	9	D10163	Outrigger Hinge Bushing	5, 9
D10047	L. H. Outrigger Stop	9	D10164	Right Hand Wheel Spindle	5, 9, 21
D10059	R. H. Lift Arm	9	D10165	Eye Bolt, 1"	5
D10060	L. H. Lift Arm	9	D10175	Axle Rockshaft	7
D10061	R. H. Angle	9	D10176	Spindle	7, 21
D10062	L. H. Angle	9	D10177	Lock-up Strut	7
D10063	O. R. Lift Strap	9	D10178	Lock-up Anchor	7
D10064	Lift Strap	9	D10179	Long Pin	7
D10065	Pin	9	D10180	Short Pin	7
D10066	Link Lift	9	D10181	L. H. Wheel Support	5, 9
D10067	Pin Assembly	9	D10183	O. R. Support Strap	5, 9
D10068	U-Bolt	9	D10184	L. H. Wheel Spindle	5, 9, 21
D10072	Lower Sprocket 1"	11, 13, 15, 17	D10185	Eye Bolt, 5/8	9, 11, 13
D10073	Bearing	11, 15	D10189	U-Bolt, 3/4	17
D10074	Bearing Block	13, 17	D10193	7" Stub Member	9
D10075	Lower Sprocket 7/8"	11, 13, 15, 17	D10194	11" Stub Member	9
D10077	1" Square Spool	13, 17	D10203	Main Frame End	7
D10078	Hitch Link	7	D10204	Power Shaft Assembly	13, 17
D10079	Main Frame Hinge	9	D10205	Splined Shaft	13, 17
D10080	Outrigger Hinge	7	D10206	36" Rockshaft	11, 13
D10081	Boot Point	11, 15	D10208	42" Rockshaft	11, 13
D10083	Hitch Bracket, 4 x 4	7	D10209	48" Rockshaft	11, 13
D10084	Hitch Channel	7	D10211	Trunion	11, 13
D10085	Tube Hitch, 4 x 4	7	D10212	Boot Support	11
D10087	Rear Stand	7	D10213	R. H. Rockshaft Strap	11, 13
D10088	Jack Assembly	7	D10214	L. H. Rockshaft Strap	11, 13
D10089	Quick-Lock Pin	7	D10217	Anchor Support	11, 13
D10090	Jack Pin	7	D10218	Spring Mounting Bracket	11, 13
D10091	Jack Support	7	D10219	Locknut	11, 13, 19
D10092	Valve Stem	21	D10220	U-Strap	11, 13
D10110	Wheel, 15 x 5	21	D10223	Sleeve	7
D10112	Hex Shaft and Yoke	13, 17	D10225	Pivot Bushing	7
D10114	Yoke with Tube and Rect. Sleeve	13, 17	D10226	SMV Emblem Bracket	9
D10117	Yoke and Rectangular Shaft, 56"	13, 17	D10227	Drive Shaft Hanger	7
D10119	Joint Assembly Boot Input	13, 17	D10228	Main Frame Support Strap	7
D10120	Yoke and Shear Pin Shaft	13, 17	D10229	Pin	11, 13, 19
			D10230	Compression Spring	11, 13, 19
			D10231	Bolt	11, 13

PART NO.	DESCRIPTION	PAGES	PART NO.	DESCRIPTION	PAGES
D10232	Washer	11, 13, 19	D10322	Rod, 1 x 144"	13, 17
D10233	Spacer	11, 13	D10323	Rod, 1 x 147"	13, 17
D10235	Idler Sprocket, 1" Hex Bore	11, 15	D10326	Front Tongue Support, 4 x 4	7
D10236	Bearing	11, 15	D10327	Outrigger Cylinder Pin	5, 9
D10237	Spring Trip Boot Chain Assembly	11	D10328	Hose Clamp	9
D10238	Sprocket, 16-1/2 Tooth	11	D10329	Rigid Boot Chain Assembly	15
D10239	Spring Trip Boot	11	D10331	Red Reflector	9
D10240	Flangette	11, 15	D10332	Amber Reflector	9
D10241	Spacer	11, 15	D10337	Main Bracket	19
D10242	Spring Trip Boot Top Plate	11	D10338	High Arc Spring Standard	19
D10243	Spring Trip Lower Side	11	D10339	Adjustment Bolt	19
D10245	Pointed Shoe	13, 17	D10340	U-Bolt, 7/8 Diamond	19
D10248	Stub Point Shoe	13, 17	D10341	Pivot Bolt	19
D10250	R. H. Rigid Boot Assembly	17	D10342	Tapered Nut	19
D10251	Sprocket, 12-1/2 Tooth	15	D10343	Pivot Bushing	19
D10252	Rigid Boot	15	D10344	Clamp	19
D10253	Spacer	15	D10345	U-Strap	19
D10256	Short Pendant	13	D10346	Clamp, Flat Spring Standard	20
D10257	Long Pendant	13	D10347	Cap, Flat Spring Standard	20
D10258	R. H. Tiller Bar (12-1/2")	13, 17	D10348	Strap, Flat Spring Standard	20
D10259	L. H. Tiller Bar (12-1/2")	13, 17	D10349	Carriage Bolt, 5/8 x 7-3/4	20
D10263	Bottom Chisel	13, 17	D10350	Wrench	19
D10264	Top Chisel	13, 17	D10351	Flat Spring Standard	20
D10265	Tiller Bar Mounting Angle R. H.	13, 17	D10355	Set Collar	13, 17
D10266	Tiller Bar Mounting Angle L. H.	13, 17	D10359	Extended Pendant Mount Angle, L. H.	17
D10267	R. H. Tiller Bar (48-1/2")	13, 17	D10360	Extended Pendant Mount Angle, R. H.	17
D10268	L. H. Tiller Bar (48-1/2")	13, 17	D10362	Sleeve	19
D10271	R. H. Tiller Bar (90-1/2")	13, 17	D10363	Washer	19
D10272	L. H. Tiller Bar (90-1/2")	13, 17	D10364	Bushing	19
D10275	Rigid Pendant	17	D10369	Special Hard Washer	21
D10276	Bottom Clip	13, 17	D10372	Yoke and Rectangular Shaft, 71"	13, 17
D10277	Top Clip	13, 17	D10374	71" Joint Assembly	13, 17
D10279	Rod, 7/8 x 147"	13, 17	D10379	Shear Bolt	13, 17
D10284	Truss Rod	9	D10382	Jack Attaching Plate	7
D10286	R. H. Angle	15, 17	D10384	Yoke and Rectangular Shaft, 40"	13, 17
D10287	L. H. Angle	15, 17	D10385	40" Joint Assembly	13, 17
D10288	Rigid Lower Side	15	D10464	Box of 10 Shear Bolts and Nuts	13, 17
D10289	Rigid Boot Top Plate	15	F1628	Union Tee, 1/2"	29, 31
D10292	Connecting Link	11, 15	F1629	Union, 1/2"	29, 31
D10293	Offset Link	11, 15			
D10294	Front L. H. Anchor	9	F10021	Poppet	25, 27
D10295	Front R. H. Anchor	9	F10022	O-Ring	25, 27
D10296	Rear L. H. Anchor	9	F10023	Seat	25, 27
D10297	Rear R. H. Anchor	9	F10024	Back-up	27
D10300	Clamp	32	F10025	Base	27
D10301	Spacer	32	F10026	Piston	27
D10302	Spacer Plate	32	F10027	O-Ring	27
D10303	Upper Spring Plug	32	F10028	Wiper	23, 25, 27
D10304	Lower Spring Plug	32	F10029	Back-up	23, 25, 27
D10305	L. H. Tiller Bar, (84-1/2")	13, 17	F10030	O-Ring	23, 25, 27
D10307	L. H. Tiller Bar, (45-1/2")	13, 17	F10031	Head	27
D10308	R. H. Tiller Bar, (84-1/2")	13, 17	F10032	Nut	25, 27
D10309	R. H. Tiller Bar, (87-1/2")	13, 17	F10033	Tie Rod	27
D10310	R. H. Tiller Bar, (102-1/2")	13, 17	F10034	Cap Screw	23, 25
D10312	L. H. Tiller Bar, (102-1/2")	13, 17	F10035	Nut	23, 25, 27
D10314	Rod, 7/8 x 105"	13, 17	F10036	Rod Clevis	27
D10315	Rod, 7/8 x 123"	13, 17	F10037	Rod	25, 27
D10317	Rod, 7/8 x 144"	13, 17	F10038	Tube	27
D10320	Rod, 1 x 105"	13, 17	F10039	Seal Kit	27
D10321	Rod, 1 x 123"	13, 17	F10041	Backup	25

PART NO. DESCRIPTION	PAGES	PART NO. DESCRIPTION	PAGES		
F10043	Spring	25	K1005	Spring	32
F10044	Piston	25	K1029	16" Sweep.....	19, 20
F10045	O-Ring	25	K1630	Rod Clevis	25
F10054	Nut	23	K1633	Piston	23
F10061	Back-up.....	25	K1636	Nut	23, 25, 27
F10062	O-Ring	25	K1677	Cartridge Assembly	25
F10063	Feed Tube	25	K1678	Clevis Pin	9
F10064	Cap Screw, Actuator	25	K2189	Slow Moving Vehicle Emblem.....	9
F10066	Tie Rod	25	K3031	Snapper Pin.....	7
F10068	Actuator Stop.....	25	K3073	Wheel, 15 x 10	21
F10069	Base.....	25			
F10070	Head	25	L320	Plow Bolt, 7/16.....	19, 20
F10071	Seal Kit	25			
F10073	Back-up.....	23	R812	Quick Disconnect Yoke	13, 17
F10075	O-Ring	23	R816	Cross Kit	13, 17
F10086	Base.....	23	R4300SW	Washer.....	13, 17
F10087	Wiper.....	23			
F10088	Back-up.....	23			
F10089	O-Ring	23			
F10096	Straight Thread O-Ring 90° Elbow	29, 31			
F10098	Straight Thread O-Ring Connector	29, 31			
F10100	Hydraulic Restrictor	29, 31			
F10128	Hose Assembly, 3/8 x 88".....	29			
F10129	Clevis Pin.....	9			
F10130	Head	23			
F10131	Tie Rod	23			
F10132	Cap Screw	23			
F10133	Rod Clevis Assembly	23			
F10134	Rod.....	23			
F10135	Tube.....	23			
F10136	Seal Kit, 4 x 32	23			
F10137	Back-up.....	23			
F10138	Nut	23			
F10139	Base.....	23			
F10140	Piston	23			
F10141	O-Ring.....	23			
F10142	Head	23			
F10143	Nut	23			
F10150	Clevis Pin.....	9			
F10151	Tie Rod	23			
F10152	Rod Clevis Assembly	23			
F10153	Rod.....	23			
F10154	Tube.....	23			
F10168	Hose Assy., 3/8 100R2 x 48"	29, 31			
F10169	Hose Assy., 3/8 100R2 x 54"	29, 31			
F10170	Hose Assy., 3/8 100R2 x 104"	31			
F10171	Hose Assy., 3/8 100R2 x 124"	29, 31			
F10172	Hose Assy., 3/8 100R2 x 156"	31			
F10173	Hose Assy., 3/8 100R2 x 180"	29, 31			
F10174	Hose Assy., 3/8 100R2 x 200"	29, 31			
F10175	Hose Assy., 3/8 100R2 x 216"	29, 31			
F10176	Hose Assy., 3/8 100R2 x 240"	31			
F10186	O-Ring	29, 31			
F10187	Tube.....	25			
F10191	Spring	25			
F10192	O-Ring.....	25			
F10193	Back-up Ring.....	25			
F10201	3-1/4 x 8 Cylinder.....	9, 27, 29, 31			
F10204	3-1/2 x 8 Cylinder with stop	9, 29, 31			
F10207	4 x 32 Cylinder.....	9, 23, 29, 31			
F10209	5 x 32 Cylinder.....	9, 23, 29, 31			