

PARTS MANUAL



CALKINS CHISEL PLOW

11,22,25, AND 29 FT

1989



CALKINS MANUFACTURING COMPANY

SPOKANE INDUSTRIAL PARK, BLDG. 15, SPOKANE, WA 99214

Phone (509) 928-7420

ALL NEW CALKINS PRODUCTS ARE SOLD
SUBJECT TO THE FOLLOWING WARRANTY

LIMITED WARRANTY

The Calkins Manufacturing Company, hereafter called Company, warrants new Calkins products to the original purchaser for one season's use after the date of purchase.

Normal procedure for a warranty request will be for the item in question to be returned to the Company freight prepaid. If determined defective by the Company, it will be repaired or replaced and returned freight collect.

It is understood that this type program may not always be practical from the standpoint of distance and/or time. At the Company's option, if workmanship and/or material is determined to be defective, the Company will arrange for the dealer to make repairs at the dealer's business location. (It is understood that the purchaser will pay dealer for travel and expenses if purchaser chooses to have dealer repair said product at another location.)

This warranty shall not apply to any part of said product which in the judgment of the Company has been subjected to misuse, negligence, alteration, or accident, or which has served its normal wear life. In no event shall the Company be liable for consequential damage of any kind or nature. The Company makes no warranty whatsoever with respect to tires and tubes, and trade accessories not manufactured by the Company, although these items may be warranted by their respective manufacturers.

The placing upon any Calkins product of any attachment or equipment not manufactured and sold by the Company, or authorized by it, shall operate to void and waive any warranty whatsoever by the Company. This warranty is in lieu of all other warranties and conditions, express, implied, or statutory, and all other obligations or liabilities on the part of the Dealer and Company. No representative of the Company has authority to change the terms of this warranty in any manner whatsoever and no assistance to Purchaser by the Company in the repair or operation of the product shall constitute a waiver of the conditions of this warranty, nor shall such assistance extend or revive it. This warranty does not apply to used or second-hand machines.

Except as set forth above, Calkins shall not be liable for injuries or damages of any kind or nature, direct, consequential, or contingent, to person or property. Warranty does not apply to loss of crop, or loss of time, rental, substitute machinery, or for any other reason.



CALKINS MANUFACTURING COMPANY

SPOKANE INDUSTRIAL PARK, BLDG. 15, SPOKANE, WA 99214

Phone (509) 928-7420

Printed in U.S.A.

PARTS MANUAL

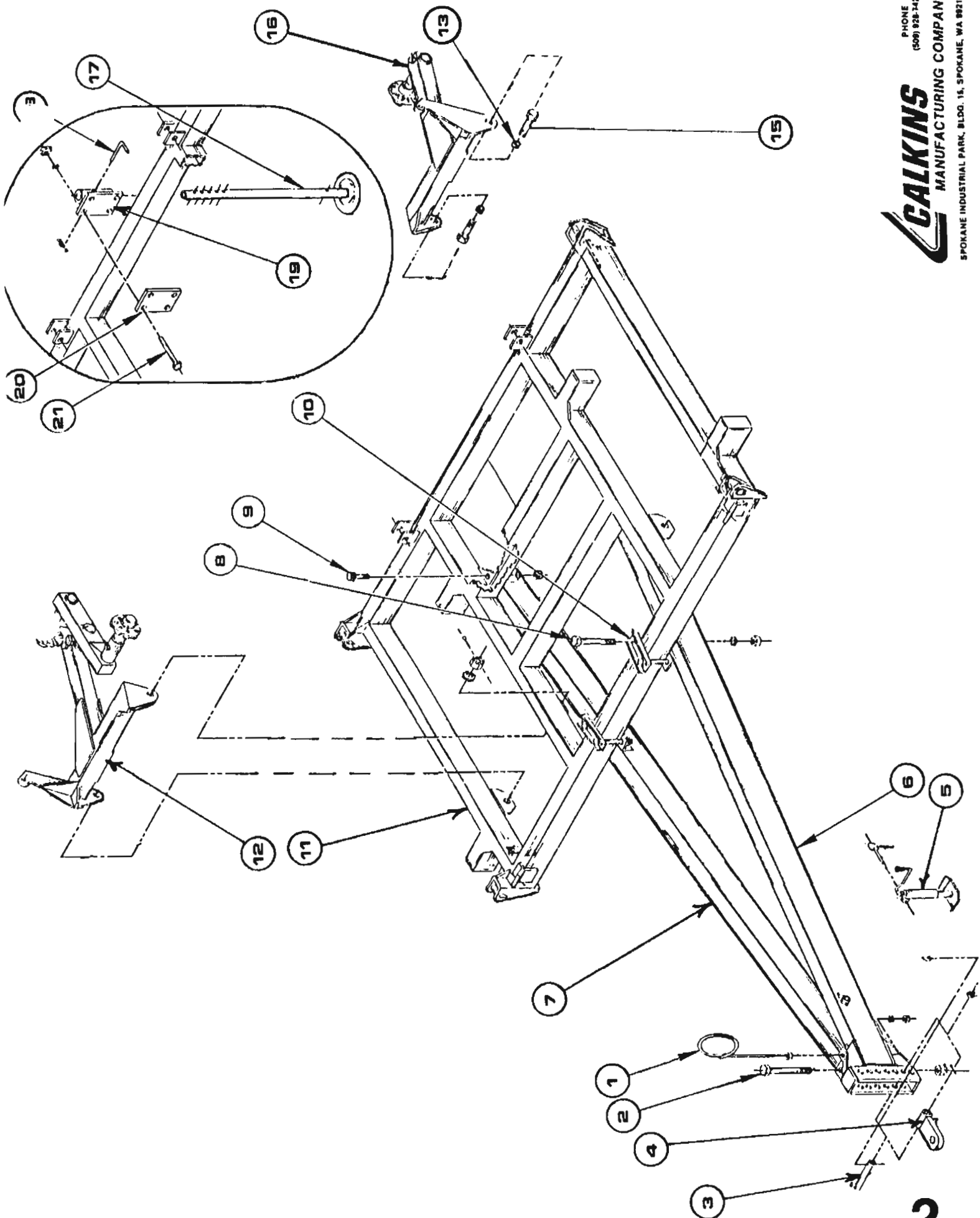
1600 SERIES CHISEL PLOW 11,22,25 AND 29 FT.

CONTENTS

	PAGE
11 FT. CHISEL PLOW MATERIAL LISTING	1
11 FT. CHISEL PLOW MAJOR COMPONENTS LAYOUT	2
3-SECTION CHISEL PLOW MATERIAL LISTING	3
3-SECTION CHISEL PLOW MAJOR COMPONENTS BREAKDOWN	4
HYDRAULIC MAIN LIFT MATERIAL LIST 11 FT. CHISEL PLOW	5
HYDRAULIC MAIN LIST BREAKDOWN LAYOUT 11 FT. CHISEL PLOW	7
HYDRAULIC MAIN LIFT 3-SECTION MATERIAL LIST	8
HYDRAULIC MAIN LIFT 3-SECTION BREAKDOWN	9
HYDRAULIC MAIN LIFT CYLINDER LAYOUT	10
HYDRAULIC WINGLIFT 3-SECTION MATERIAL LIST	11
HYDRAULIC WINGLIFT 3-SECTION BREAKDOWN	13
TANDEM WHEEL LEG ASSEMBLY BREAKDOWN	14
TANDEM WHEEL LEG ASSEMBLY MATERIAL LIST	15
SINGLE WHEEL LEG ASSEMBLY BREAKDOWN	17
SINGLE WHEEL LEG ASSEMBLY MATERIAL LIST	18
SHANK LAYOUT 11 FT. CHISEL	19
SHANK LAYOUT 22 FT. CHISEL	20
SHANK LAYOUT 25 FT. CHISEL	21
SHANK LAYOUT 29 FT. CHISEL	22
SHANK EXTENSION SHIM INSTALLATION	23
SHANK EXTENSION KIT BREAKDOWNS	24
STIFF SHANK LAYOUT	25
STIFF SHANK MATERIAL LIST	26
SPRING TRIPPED SHANK LAYOUT	27
SPRING TRIPPED SHANK MATERIAL LIST	28

11' CHISEL
MATERIAL LISTING
1600 SERIES CHISEL PLOW

<u>REF. NO.</u>	<u>DESCRIPTION</u>	<u>PART NO.</u>
1	HOSE MAST LOCK WASHER MEDIUM NUT, HEX, $\frac{1}{2}$ - 13NC	101-037 7-843-015 7-723-015
2	BOLT, $1\frac{1}{4}$ - 12 NF x 10 $\frac{1}{8}$, TONGUE NUT, HEX, SLOTTED $1\frac{1}{4}$ - 12NF COTTER PIN, $\frac{3}{16}$ x $1\frac{3}{4}$	8-116-006 7-717-240 7-910-175
3	PULL EYE PIN 1 - $\frac{1}{2}$ x 5 $\frac{13}{16}$ MACHINE BUSHING 1 - $\frac{1}{2}$ 10 GA. NRMB KLINK PIN (PULL EYE)	8-036-025 7-896-500 7-920-006
4	PULL EYE STD	5-919-900
5	TONGUE JACK	410-512
6	LH TONGUE	420-016
7	RH TONGUE	420-017
8	CAPSCREW, $\frac{3}{4}$ - 10NC x 8 LOCKWASHER, $\frac{3}{4}$ MEDIUM NUT, HEX, $\frac{3}{4}$ - 10MC	7-115-080 7-845-020 7-725-001
9	CAP SCREW 1 x 3 NC 1" MEDIUM LOCKWASHER 1" NC HEX NUT	7-116-115 7-846-020 7-726-005
10	CLAMP PLATE	206-031
11	11' FRAME	420-030
12	WHEEL LEG ASSY W/WALKING BEAM RH LH	420-335 420-330
13	BUSHING $1\frac{3}{4}$ x $1\frac{17}{32}$ ID x $1\frac{7}{16}$	6-136-675
15	BOLT, 1 - $\frac{1}{2}$ x $3\frac{5}{8}$ NF 1 $\frac{1}{2}$ SLOTTED NUT NF $\frac{3}{16}$ x 2 COTTER PIN	8-116-803 7-717-552 7-910-180
16	WHEEL LEG ASSY, SINGLE LH RH	420-332 420-333
17	REAR STAND	420-102
18	L - PIN #8 HITCH PIN	8-023-007 7-920-002
19	REAR STAND MOUNT	420-103
20	REAR STD CLAMP PLATE	420-936
21	$\frac{5}{8}$ x 5 $\frac{1}{2}$ NC CS $\frac{5}{8}$ MED LOCKWASHER $\frac{5}{8}$ NC HEX NUT	7-114-055 7-844-020 7-724-005



MATERIAL LISTING
1600 SERIES CHISEL PLOW
22, 25 AND 29 FT.

PAGE 1 OF 2

FORM: 1188-13

REF. NO	DESCRIPTION	22 FT	25 FT	29 FT
		8 FT CNTR 7 FT WING	11 FT CNTR 7 FT WING	11 FT CNTR 9 FT WING
1	TONGUE LT	420-018	420-009	420-009
	TONGUE RT	420-019	420-010	420-010
2	CROSS TONGUE		1/A 420-015	420-015
3	WING PULL LT		1/A 420-023	420-021
	WING PULL RT		1/A 420-024	420-022
4	CENTER FRAME	420-031	420-030	
5	WING FRAME LT	420-041		420-035
	WING FRAME RT	420-042		420-036
6	WHEEL LEG, CENTER FRAME FOR USE W/SINGLE WHEELS			
	ASSEMBLED WITH 6 BOLT HUB LT	420-340	420-332	
	RT	420-345	420-333	
	WHEEL LEG CENTER FRAME FOR USE W/TANDEM WHEELS			
	ASSEMBLED WITH WALKING BEAM AND 6 BOLT HUB LT	N/A	420-330	
	RT	N/A	420-335	
7	WHEEL LEG, WING FRAME FOR USE W/SINGLE WHEELS			
	ASSEMBLED WITH 6 BOLT HUB LT		420-332	
	RT		420-333	
	WHEEL LEG, WING FRAME FOR USE W/TANDEM WHEELS			
	ASSEMBLED WITH WALKING BEAM AND 6 BOLT HUB LT		420-330	
	RT		420-335	
8	TRANSPORT LATCH		420-100	
9	SPRING ASSIST ASSEMBLY STANDARD 20 FT, OPTIONAL 23 AND 29		420-475	
10	SPRING, SPRING ASSIST ASSY		5-114-001	
11	CYLINDER, SPRING ASSIST ASSY		420-106	
12	SPRING RETAINER, SPRING ASSIST ASSY		420-105	
	LOCKWASHER, 1/2 MED		7-843-015	
	NUT, HEX 1/2-13NC		7-723-015	
13	SPACER 1-1/8 IN FLAT WASHER (6 REQD)		7-816-022	
14	SPRING GUIDE		420-107	
15	MOUNTING PLATE (TRANSPORT LATCH)		420-293	
16	SHANK MOUNT, 9 INCH		420-083	
17	MOUNTING PLATE (SHANK MOUNT)		420-082	
18	REAR STAND		420-102	
19	ADJUSTMENT BRACKET (REAR STAND)		420-103	
20	MOUNTING PLATE (REAR STAND)		420-936	
21	HOSE MAST		101-037	
	LOCKWASHER 1/2 MEDIUM		7-843-015	
	NUT, HEX, 1/2-13NC		7-723-015	
22	PULL EYE		5-919-900	
23	TONGUE JACK ASSEMBLY		410-512	
24	TONGUE JACK		5-329-051	
25	CLAMP PLATE		206-031	
26	BOLT, 1-1/4-12NF x 10-1/8, TONGUE		8-116-006	
	NUT, HEX, SLOTTED, 1-1/4-12NF		7-717-240	
	COTTER PIN, 3/16 x 1-3/4		7-910-175	

MATERIAL LISTING
1600 SERIES CHISEL PLOW
22, 25 AND 29 FT.

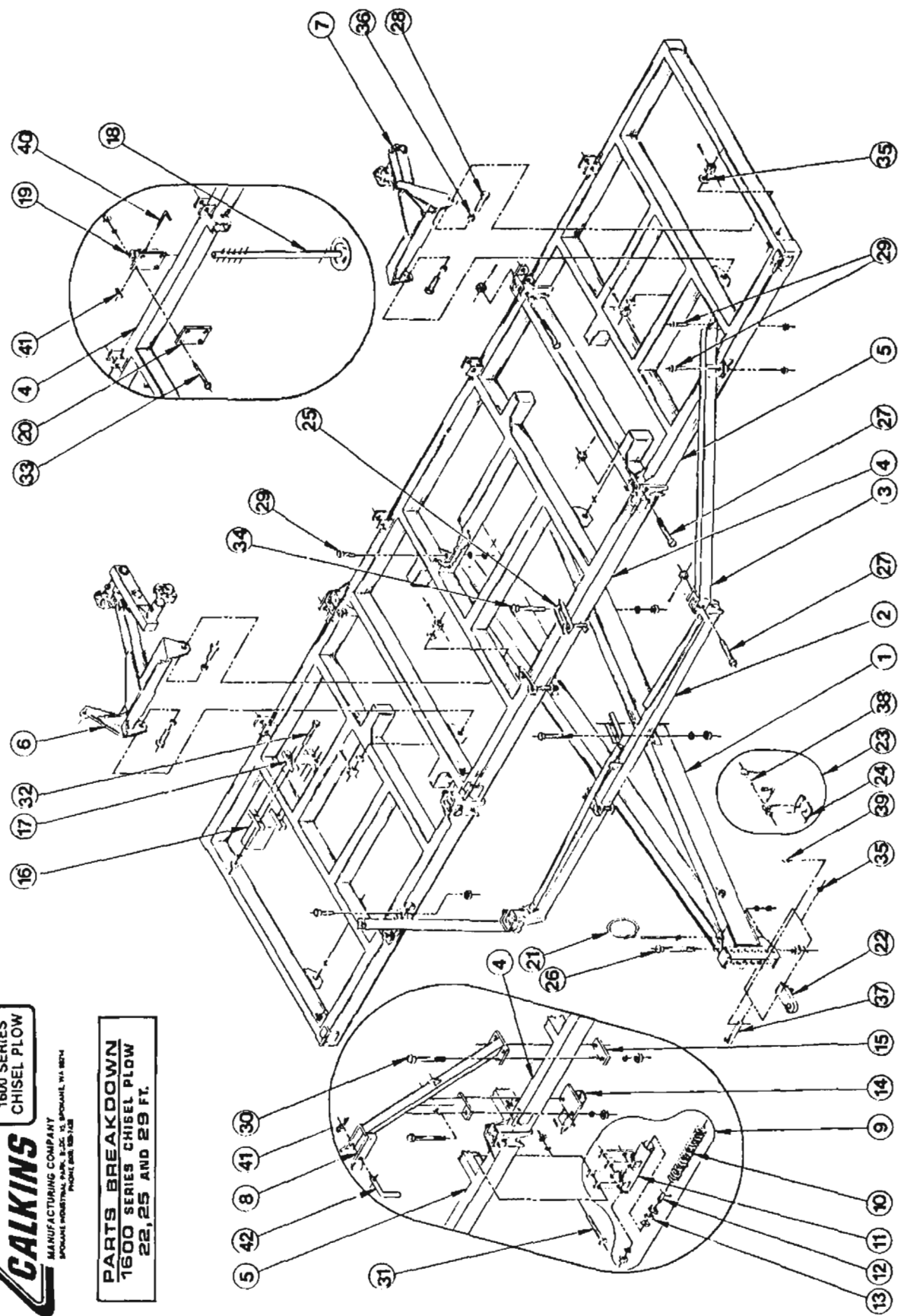
PAGE 2 OF 2

FORM: 1084-04

REF. NO	DESCRIPTION	22 FT	25 FT	29 FT
		8 FT CNTR 7 FT WING	11 FT CNTR 7 FT WING	11 FT CNTR 9 FT WING
27	BOLT, 1-1/4-12NF x 6-5/8 (CROSS TONGUE & HINGE POINTS)		8-116-032	
	NUT, HEX, SLOTTED, 1-1/4-12NF		7-717-240	
	COTTER PIN, 3/16 x 1-3/4		7-910-175	
28	BOLT, 1-1/2-12NF x 3-5/8, (WHEEL LEGS)		8-116-803	
	NUT, HEX, SLOTTED, 1-1/2-12NF		7-717-552	
	COTTER PIN, 3/16 x 2		7-910-180	
29	CAPSCREW, 1-8NC x 3		7-116-030	
	LOCKWASHER, 1" MEDIUM		7-846-020	
	NUT, HEX, 1-8NC		7-726-005	
30	CAPSCREW, 5/8-11NC x 8		7-114-080	
	LOCKWASHER, 5/8 MEDIUM		7-844-020	
	NUT, HEX, 5/8-11NC		7-724-005	
31	CAPSCREW, 5/8-11NC x 6		7-114-056	
	LOCKWASHER, 5/8 MEDIUM		7-844-020	
	NUT, HEX, 5/8-11NC		7-724-005	
32	CAPSCREW, 5/8-11NC x 5		7-114-050	
	LOCKWASHER, 5/8 MEDIUM		7-844-020	
	NUT, HEX, 5/8-11NC		7-724-005	
33	CAPSCREW, 5/8-11NC x 5-1/2		7-114-055	
	LOCKWASHER, 5/8 MEDIUM		7-844-020	
	NUT, HEX, 5/8-11NC		7-724-005	
34	CAPSCREW, 3/4-10NC x 8		7-115-080	
	LOCKWASHER, 3/4 MEDIUM		7-845-020	
	NUT, HEX, 3/4-10NC		7-725-001	
35	MACHINE BUSHING, 1-1/2", 10 GA NAR RIM		7-896-500	
36	BUSHING, 1-3/4 OD x 1-17/32 ID x 1-7/16		6-136-675	
37	PIN, PULL EYE 1-1/2 x 5-13/16		8-036-025	
38	PIN, TONGUE JACK W/CHAIN 5/8 x 3-9/16		7-036-010	
39	PIN, PULL EYE BOLT (CLICK PIN)		7-920-006	
40	PIN, REAR STAND		8-023-007	
41	PIN, HITCH, NO. 8		7-920-002	
42	PIN, WING LOCK		8-036-801	
			7-920-010	

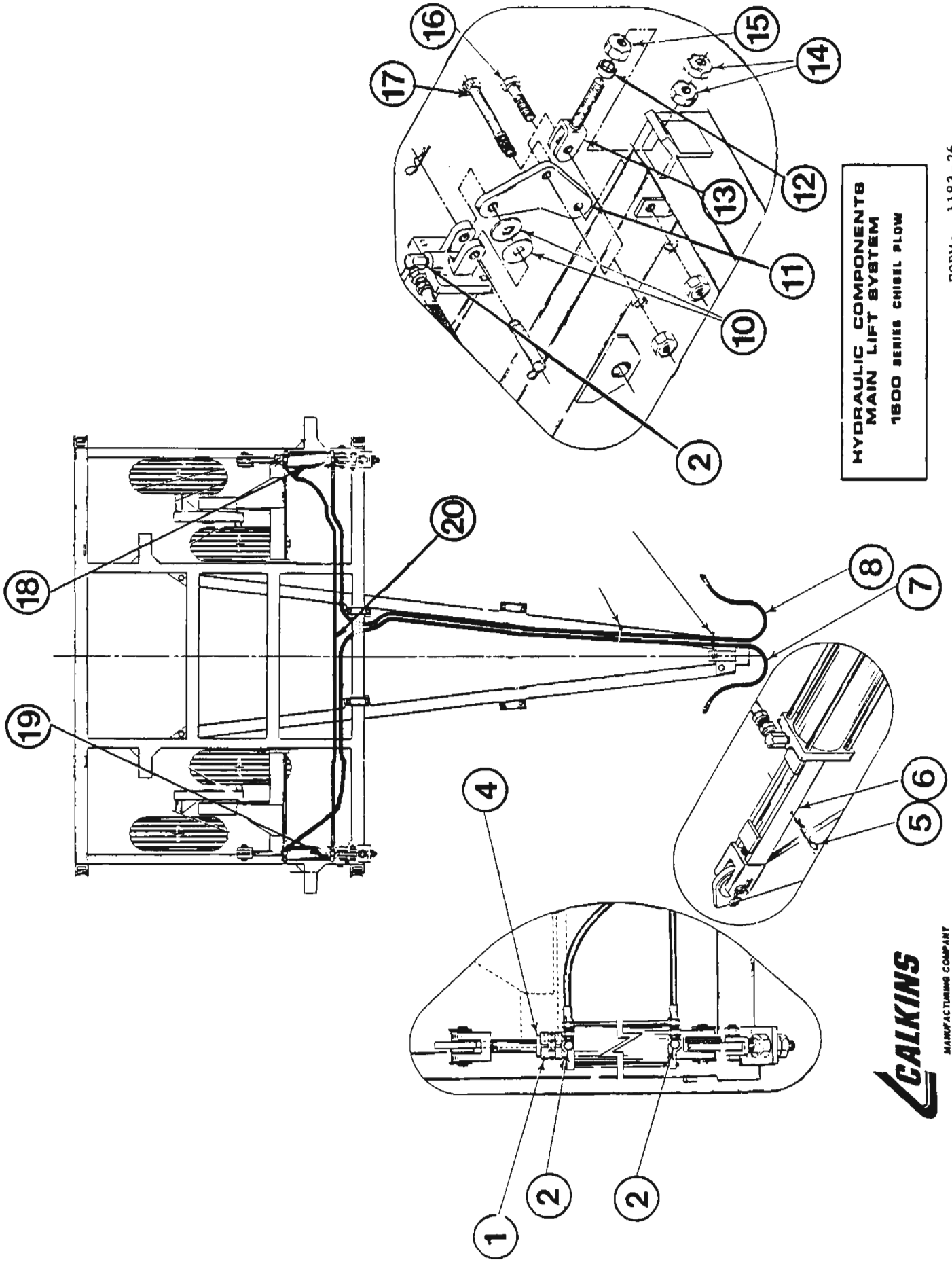
CALKINS
 MANUFACTURING COMPANY
 1600 SERIES CHISEL PLOW
 800 EAST INDUSTRIAL PARK, E.C.C. 15, BRIDGEVILLE, PA 15004
 PHONE 412-838-1228

PARTS BREAKDOWN
 1600 SERIES CHISEL PLOW
 22, 25 AND 29 FT.



11' CHISEL
MATERIAL LISTING
MAIN LIFT SYSTEM
1600 SERIES CHISEL PLOW

<u>REF. NO.</u>	<u>DESCRIPTION</u>	<u>PART NO.</u>
1.	DEPTH STOPS KIT OF FIVE (SIZES 1 THRU 2 INCH) DEPTH STOP 1" (WHITE) DEPTH STOP 1½" (WHITE) DEPTH STOP 1½" (LIME) DEPTH STOP 1 ¾" (RUSSET) DEPTH STOP 2" (YELLOW)	6-899-402 6-896-100 6-896-125 6-896-150 6-896-175 6-896-200
2.	SWIVEL UNION, ½" 90 - O-RING	5-846-095
4.	SPACER BUSHING	6-146-014
5.	PIN, CYLINDER LOCK (#8 HITCH PIN)	7-920-002
6.	CYLINDER LOCK (FOR HYD. CYL. AB 1252) CYLINDER LOCK (FOR HYD. CYL. AB 1270)	420-101 420-108
7.	3/8" HOSE, ½" MM, 22 FT IN	6-822-449
8.	3/8" HOSE, ½" MM, 19 FT INS	6-822-421
10.	WASHERS, 1 INCH CUT	7-810-020
11.	PIVOT ARM (FOR 32" SHANK) PIVOT ARM (FOR 26" SHANK)	420-295 400-025
12.	BUSHING ADV. LINK (1" ID X 1.3150D X 0.5625)	6-146-002
13.	ADJUSTABLE LINK (410-581 ASSY)	410-121
14.	NUT, ADJ. LINK, 7/8-9 NC JAM	7-725-138
15.	NUT, ADJ. LINK, 7/8-9 NC HEX	7-715-871
16.	CAPSCREW, ¾-10NC X 2½ LOCKWASHER, ¾ MEDIUM NUT, HEX. ¾-10NC	7-115-025 7-845-020 7-725-001
17.	CAPSCREW, ¾-10 NC X 5 LOCKWASHER, ¾ MEDIUM NUT, HEX. ¾-10 NC	7-115-050 7-845-020 7-725-001
18.	HYDRAULIC CYLINDER, AB 1252 (4 x 12) HYDRAULIC CYLINDER, AB 1258 (3 ¾ x 12)	5-818-065 5-818-064
	OR	
19.	HYDRAULIC CYLINDER AB 1270 (3 ¼ x 12) HYDRAULIC CYLINDER AB 1264 (3 ½ x 12)	5-818-062 5-818-063
20.	3/8 X 12' 10" X 1/2 MM, HOSE	6-822-353



HYDRAULIC COMPONENTS
 MAIN LIFT SYSTEM
 1800 SERIES CHISEL PLOW



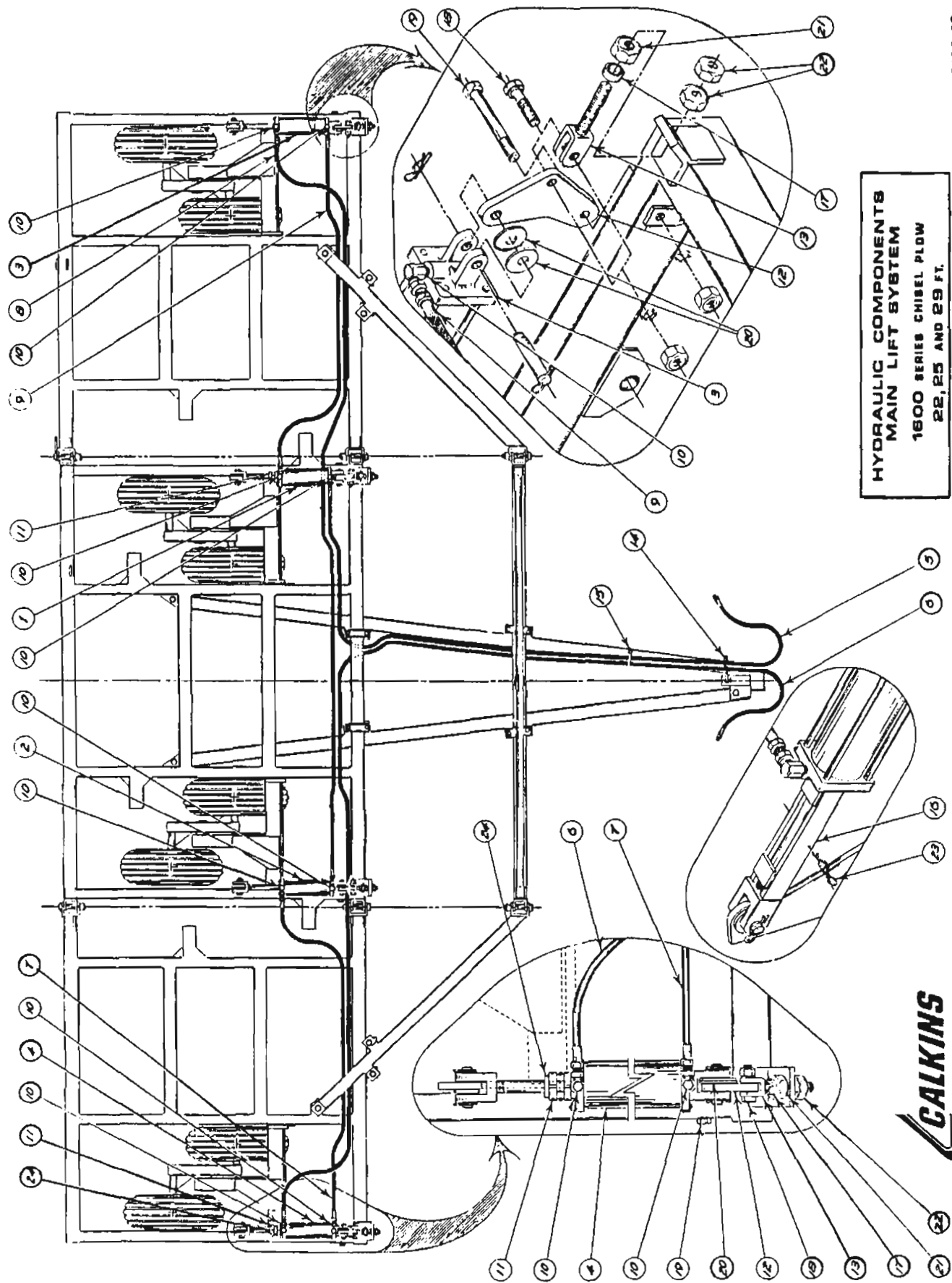
MANUFACTURING COMPANY
 SPOKANE INDUSTRIAL PARK, BLDG. 15, SPOKANE, WA 99214

FORM: 1183-26

MATERIAL LISTING
HYDRAULIC COMPONENTS
MAINLIFT SYSTEM

1600 SERIES CHISEL PLOW
22, 25 AND 29 FT

REF. NO.	DESCRIPTION	22 FT	25 FT	29 FT
		8 FT CNTR 7 FT WGS	11 FT CNTR 7 FT WGS	11 FT CNTR 9 FT WGS
1	HYDRAULIC CYLINDER, AB 1252 (4 x 12)		5-818-065	
2	HYDRAULIC CYLINDER, AB 1264 (3½ x 12)		5-818-063	
3	HYDRAULIC CYLINDER, AB 1258 (3 3/4 x 12)		5-818-064	
4	HYDRAULIC CYLINDER, AB 1270 (3½ x 12)		5-818-062	
5	3/8" HOSE, ½" MM, 17 FT 11 IN.	6-822-405	N/A	
	3/8" HOSE, ½" MM, 20 FT 11 INS	NA	6-822-443	NA
	3/8" HOSE, ½" MM, 23 FT 11 INS	N/A		6-822-475
6	3/8" HOSE, ½" MM, 29 FT 1 INS	6-822-544	N/A	
	3/8" HOSE, ½" MM, 32 FT 8 INS	NA	6-822-629	NA
	3/8" HOSE, ½" MM, 37 FT 10 INS	N/A		6-822-581
7	3/8" HOSE, ½" MM, 8 FT 8 INS	6-822-285		NA
	3/8" HOSE, ½" MM, 10 FT 8 INS	N/A		6-822-307
8	3/8" HOSE, ½" MM, 16 FT 7 INS	6-822-399	N/A	
	3/8" HOSE, ½" MM, 19 FT 9 INS	NA	6-822-423	NA
	3/8" HOSE, ½" MM, 21 FT 8 INS	N/A		6-822-422
9	3/8" HOSE, ½" MM, 8 FT 8 INS	6-822-285		NA
	3/8" HOSE, ½" MM, 10 FT 8 INS	N/A		6-822-307
10	SWIVEL UNION, ½" 90° O-RING	5-846-095		
11	DEPTH STOPS			
	KIT OF FIVE (SIZES 1 THRU 2 INCH)	6-899-402		
	DEPTH STOP 1" (WHITE)	6-896-100		
	DEPTH STOP 1½" (DARK GREEN)	6-896-125		
	DEPTH STOP 1½" (LIME)	6-896-150		
	DEPTH STOP 1½" (RUSSET)	6-896-175		
	DEPTH STOP 2" (YELLOW)	6-896-200		
12	PIVOT ARM (FOR 32" SHANK)	420-295		
	PIVOT ARM (FOR 26" SHANK)	400-025		
13	ADJUSTABLE LINK (ADJ. LINK ASSY 410-581)	410-121		
14	HOSE MAST	101-037		
	LOCKWASHER ½" MEDIUM	7-843-015		
	NUT, ½-13 NC, ½" HEX	7-723-015		
15	PLASTIC TIE STRAP	5-229-006		
16	CYLINDER LOCK (FOR CYL. AB-1252) (14 IN .LTH)	420-101		
	CYLINDER LOCK (FOR CYL. AB-1264) (14 1/2 IN .LTH)	420-108		
17	BUSHING ADV. LINK (1" ID X 1.3150D X 0.5625)	6-146-002		
18	CAPSCREW, 3/4-10NC X 2½	7-115-025		
	LOCKWASHER, 3/4 MEDIUM	7-845-020		
	NUT, HEX. 3/4-10NC	7-725-001		
19	CAPSCREW, 3/4-10 NC X 5	7-115-050		
	LOCKWASHER, 3/4 MEDIUM	7-845-020		
	NUT, HEX. 3/4-10 NC	7-725-001		
20	WASHERS, 1 INCH CUT	7-810-020		
21	NUT, ADJ. LINK, 7/8-9 NC HEX	7-715-871		
22	NUT, ADJ. LINK, 7/8-9 NC JAM	7-725-138		
23	PIN, CYLINDER LOCK (#8 HITCH PIN)	7-920-002		
24	SPACER BUSHING	6-146-014		



**HYDRAULIC COMPONENTS
MAIN LIFT SYSTEM
1800 SERIES CHISEL PLOW
22, 25 AND 29 FT.**

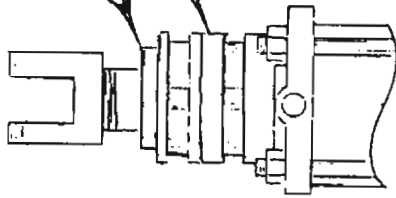


MANUFACTURING COMPANY
SPOKANE INDUSTRIAL PARK, BLDG. 15, SPOKANE, WA 99215

FORM 0186-09

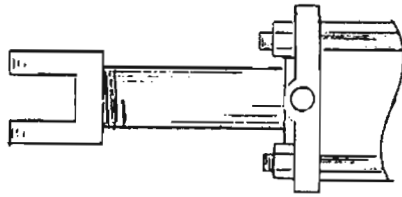
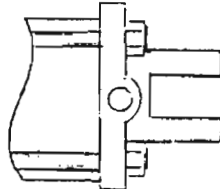
BUSHING 6-146-014

DEPTH CONTROL STOPS
COMPLETE KIT 6-899-402



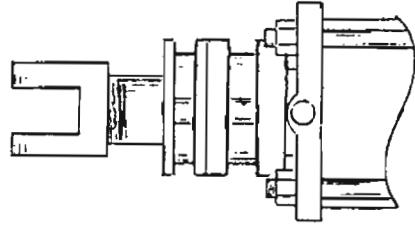
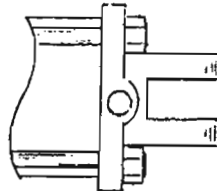
3 1/4" X 12

AB-1270



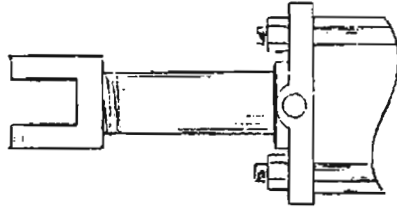
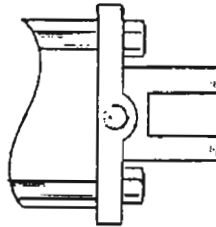
3 1/2" X 12

AB-1264



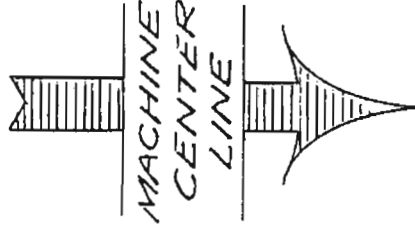
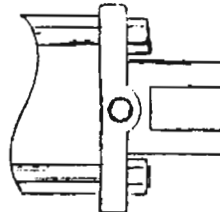
4 X 12

AB-1252



3 3/4" X 12

AB-1258



MACHINE
CENTER
LINE

DEPTH CONTROL STOPS	
COLOR CODE & SIZE	
1"	WHITE
1 1/4"	DARK GREEN
1 1/2"	LIME
1 3/4"	RUSSET
2"	YELLOW

DEPTH CONTROL STOPS

MAIN LIFT SYSTEM

3 SECTION

1600 SERIES CHISEL PLOW



FORM : 1188-1B

MANUFACTURING COMPANY

MATERIAL LISTING
 HYD. COMPONENTS
 AND WING LIFT EQUIPMENT
 1600 SERIES CHISEL PLOW
 22, 25 and 29 FT

REF. NO.	DESCRIPTION	22 FT	25 FT	29 FT
		8 FT CNTR 7 FT WGS	11 FT CNTR 7 FT WGS	11 FT CNTR 9 FT WGS
1	HYDRAULIC CYLINDER S 509, 4X24, (36 $\frac{1}{2}$ RC)		5-818-481	
2	3/8 IN. HOSE, $\frac{1}{2}$ IN. MM., 15 FT. 8 INS.	6-822-368		N/A
	3/8 IN. HOSE, $\frac{1}{2}$ IN. MM., 18 FT.	NA	6-822-416	NA
	3/8 IN. HOSE, $\frac{1}{2}$ IN. MM., 21 FT. 4 INS.		N/A	6-822-445
3	3/8 IN. HOSE, $\frac{1}{2}$ IN. MM., 44 INS.	6-822-244		N/A
	3/8 IN. HOSE, $\frac{1}{2}$ IN. MM., 7 FT.	NA		6-822-278
4	3/8 IN. HOSE, $\frac{1}{2}$ IN. MM., 34 INS.		6-822-234	
5	3/8 IN. HOSE, $\frac{1}{2}$ IN. MM., 32 INS.	6-822-232		N/A
	3/8 IN. HOSE, $\frac{1}{2}$ IN. MM., 6 FT.	NA		6-822-272
6	3/8 IN. HOSE, $\frac{1}{2}$ IN. MM., 25 INS.		6-822-225	
7	$\frac{1}{2}$ IN. 90 RESTRICTOR UNION, 1/16 INCH ORFICE (IDENTIFIED BY RUSSET COLOR) - O-RING		5-846-092	
8	$\frac{1}{2}$ IN., 90 SWIVEL UNION - O-RING		5-846-095	
9	$\frac{1}{2}$ X $\frac{1}{2}$ IN. TEE		5-833-100	
10	$\frac{1}{2}$ IN. STRAIGHT UNION		5-843-400	
11	WING LIFT ONLY		410-124	400-020
	WING LIFT ASSEMBLY INCLUDES: WING LIFT, STOPS, BUSHINGS AND FASTENERS		410-429	410-510
12	TOGGLES, WING LIFT		400-032	
13	STOP, WING LIFT		410-106	
	WING LIFT STOP ASSEMBLY INCLUDES: STOPS, BUSHINGS, FASTENERS		410-469	
14	CENTER SUPPORT, LT	NA		410-033
	CENTER SUPPORT, RT	NA		410-034
	CENTER SUPPORT	420-104		N/A
15	CENTER SUPPORT BARS	NA		420-296
16	TRANSPORT LATCH		420-100	
17	HOSE MAST		101-037	
	LOCKWASHER, $\frac{1}{2}$ IN. MEDIUM		7-843-015	
	NUT, HEX, $\frac{1}{2}$ -13NC		7-723-015	
18	MOUNTING PLATE		420-293	
19	BUSHING, WING LIFT STOP (0.510IDx3/4ODX 7/16)		6-133-007	
20	PIN, WING LOCK		8-036-006	
21	PIN, NO 8 HITCH		7-920-002	
30	CAPSCREW, $\frac{1}{2}$ -13NCx5		7-113-127	
	WASHER, $\frac{1}{2}$ IN FLAT		7-813-015	
	LOCKWASHER, $\frac{1}{2}$ IN MEDIUM		7-843-015	
	NUT, HEX $\frac{1}{2}$ -13NC		7-723-015	
31	BOLT, 1-14NFx6		8-116-003	
	NUT, 1-14NF SLOTTED		7-716-850	
	COTTER PIN, 3/16x1 $\frac{1}{2}$		7-910-170	

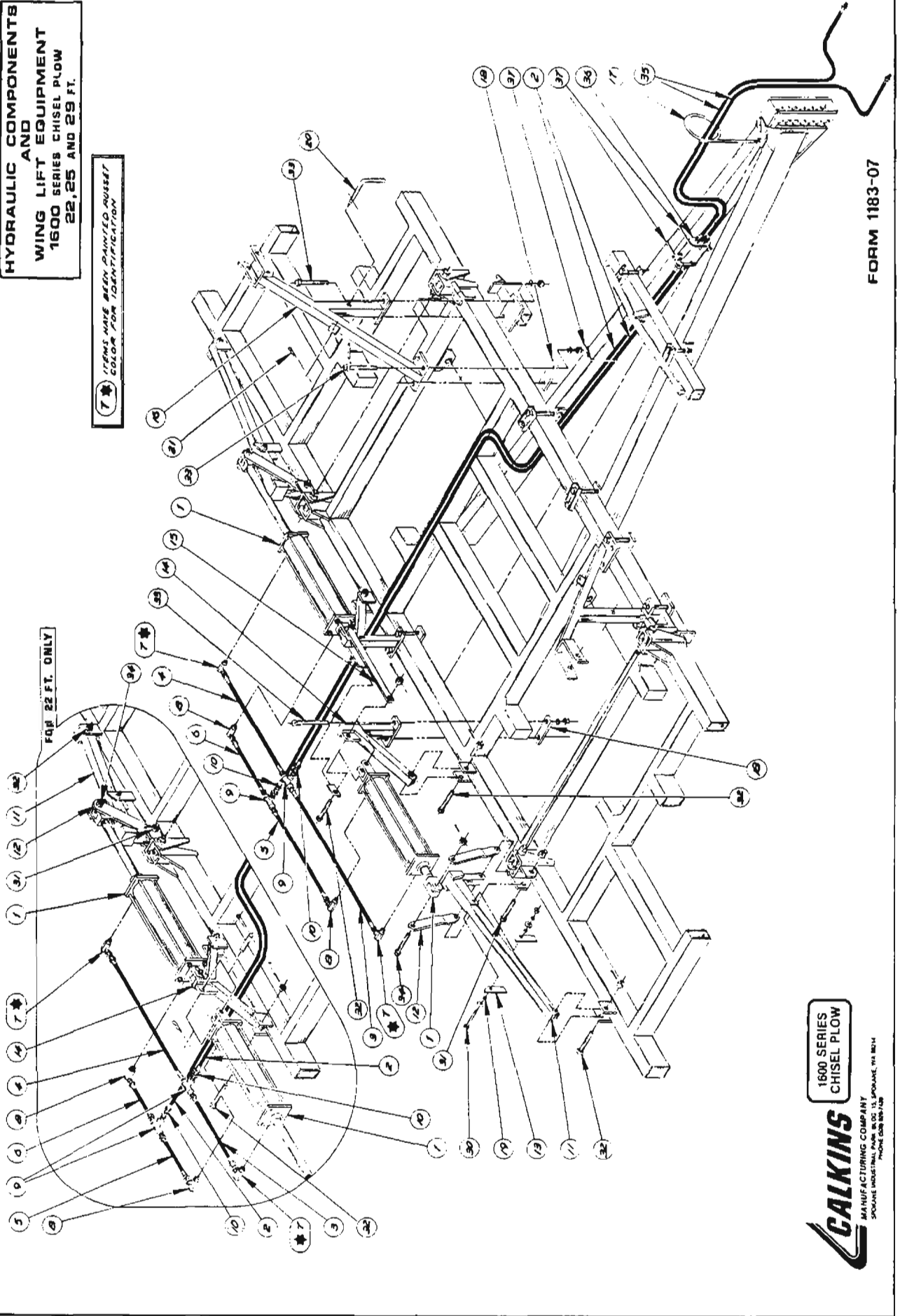
MATERIAL LISTING HYD. COMPONENTS AND WING LIFT EQUIPMENT 1600 SERIES CHISEL PLOW 22, 25 and 29 FT
--

REF. NO.	DESCRIPTION	22 FT	25 FT	29 FT
		8 FT CNTR 7 FT WGS	11 FT CNTR 7 FT WGS	11 FT CNTR 9 FT WGS
32	BOLT, 1-14NFx5		8-110-018	
	NUT, 1-14NF SLOTTED		7-716-850	
	COTTER PIN, 3/16x1½		7-910-170	
33	CAPSCREW, 5/8-11NCx8		7-114-080	
	LOCKWASHER, 5/8 IN. MEDIUM		7-844-020	
	NUT, HEX, 5/8-11NC		7-724-005	
34	BOLT 1-14NFx5½		8-116-601	
	NUT, 1-14NF SLOTTED		7-716-850	
	COTTER PIN, 3/16x1½		7-910-170	
35	3/8 x 72" x 1/2 MM HOSE		6-822-272	
36	CUSHION VALVE SRC 11Bd		5-859-045	
37	NYLON 1/2 x 21 TIE STRAP		5-229-006	

**HYDRAULIC COMPONENTS
AND
WING LIFT EQUIPMENT
1600 SERIES CHISEL PLOW
22, 25 AND 29 FT.**

7 * ITEMS HAVE BEEN PAINTED RUSSSET
COLOR FOR IDENTIFICATION

FOR 22 FT. ONLY

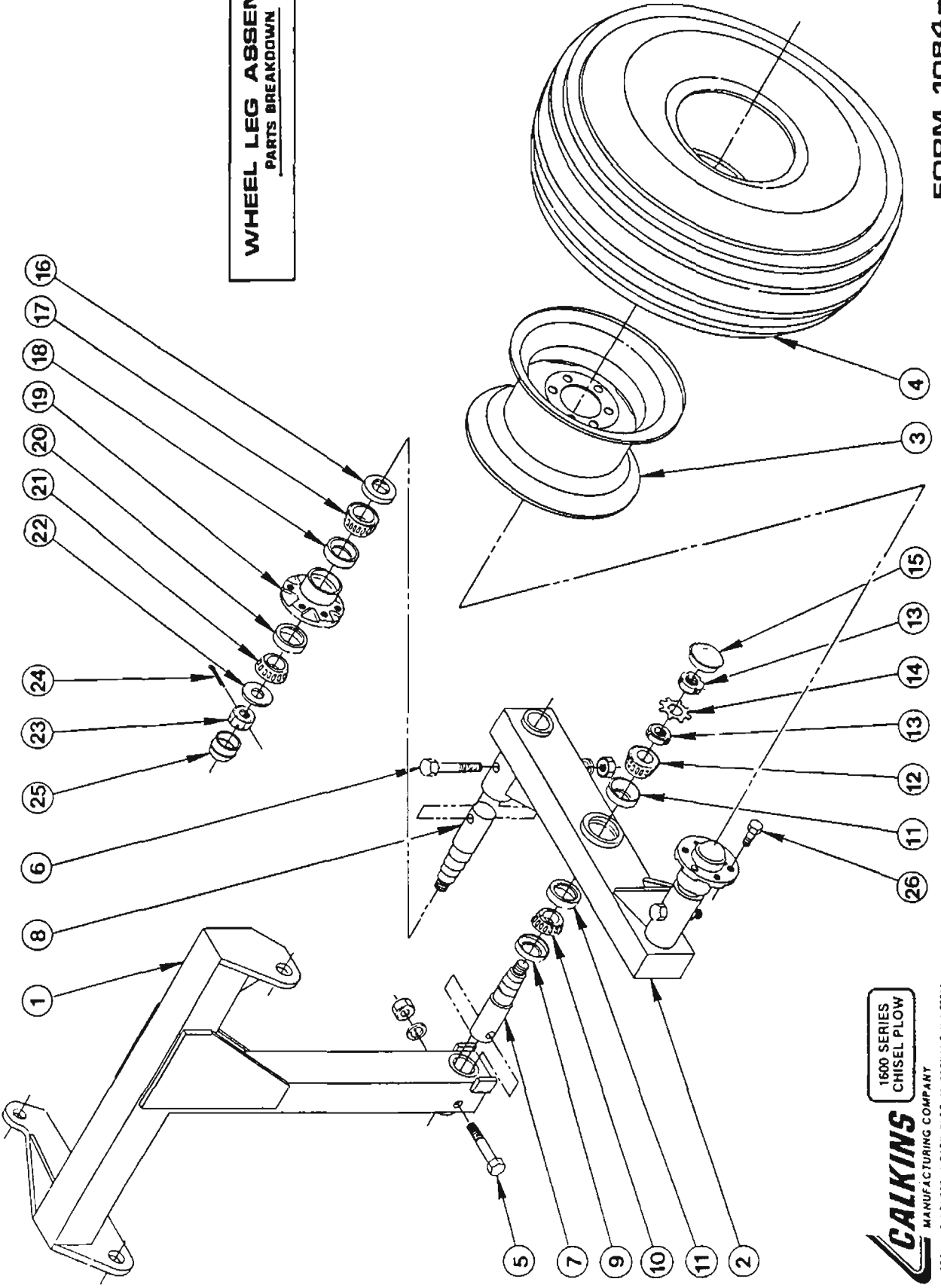


FORM 1183-07

**1600 SERIES
CHISEL PLOW**



WHEEL LEG ASSEMBLY
PARTS BREAKDOWN



CALKINS
 1600 SERIES
 CHISEL PLOW
 MANUFACTURING COMPANY
 SPOKANE INDUSTRIAL PARK, BLDG. 15, SPOKANE, WA 99214

* TANDEM WHEEL LEG
MATERIAL LISTING
1600 SERIES CHISEL PLOW
22, 25 AND 29 FT.

REF. NO.	DESCRIPTION	22 FT	25 FT	29 FT
		8 FT CNTR 7 FT WING	11 FT CNTR 7 FT WING	11 FT CNTR 9 FT WING
1A	WHEEL LEG CENTER FRAME FOR USE WITH TANDEM WHEELS LEG ONLY			
	LT	N/A	420-045	
	RT	N/A	420-046	
	ASSEMBLED W/WALKING BEAM & 6-BOLT HUB			
	LT	N/A	420-330	
	RT	N/A	420-335	
1B	WHEEL LEG, WING FRAME FOR USE WITH TANDEM WHEELS LEG ONLY			
	LT		420-045	
	RT		420-046	
	ASSEMBLED W/WALKING BEAM & 6-BOLT HUB			
	LT		420-330	
	RT		420-335	
2A	WALKING BEAM, CENTER FRAME WALKING BEAM ONLY			
	LT	N/A	420-480	
	RT	N/A	420-460	
	WALKING BEAM ASSEMBLED WITH 6 BOLT HUBS			
	LT	N/A	420-053	
	RT	N/A	420-054	
2B	WALKING BEAM WING FRAMES WALKING BEAM ONLY			
	LT		420-053	
	RT		420-054	
	WALKING BEAM ASSEMBLED WITH 6 BOLT HUBS			
	LT		420-480	
	RT		420-460	
3	RIM 15 X 10 6 BOLT		5-639-585	
	RIM 15 X 8 6 BOLT		5-639-421	
4A	TIRE, 9.5L X 15 6 PLY		5-649-060	
	TIRE, 9.5L X 15 8 PLY		5-649-062	
	TIRE, 11L X 15 8 PLY		5-649-503	
	TIRE, 11L X 15 6 PLY		5-649-504	
	TIRE, 12L X 15 8 PLY		5-649-035	
4B	RIM AND TIRE MOUNTED			
	9.5L X 15 6 PLY		5-639-583	
	9.5L X 15 8 PLY		5-639-584	
	11L X 15 6 PLY		5-639-588	
	11L X 15 8 PLY		5-639-589	
	12L X 15 8 PLY		5-639-035	
5	CAPSCREW, 5/8-11NC X 4		7-114-040	
	LOCKWASHER, 5/8 MEDIUM		7-844-020	
	NUT, HEX, 5/8-11NC		7-724-005	
6	CAPSCREW, 5/8-11NC X 5		7-114-050	
	LOCKWASHER, 5/8 MEDIUM		7-844-020	
	NUT, HEX, 5/8-11NC		7-724-005	
7	SPINDLE, WHEEL LEG, REPLACEABLE		6-628-018	

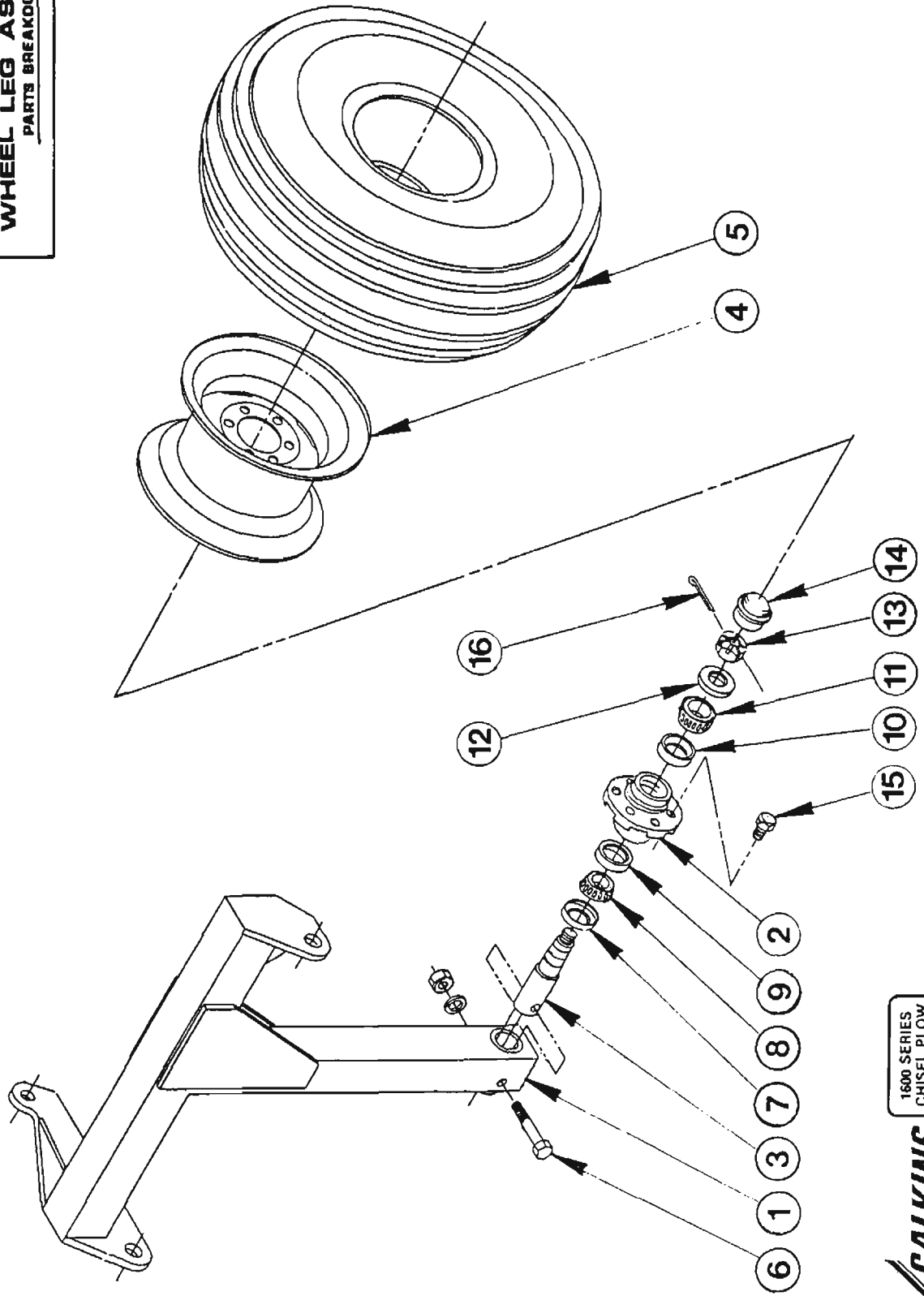
* TANDEM WHEEL LEG
MATERIAL LISTING
1600 SERIES CHISEL PLOW
22, 25 AND 29 FT.

PAGE 2 OF 2

REF. NO.	DESCRIPTION	22 FT	25 FT	29 FT
		8 FT CNTR 7 FT WING	11 FT CNTR 7 FT WING	11 FT CNTR 9 FT WING
8	SPINDLE, WALKING BEAM, REPLACEABLE		5-629-001	
9	SEAL, C/R-19400		5-439-020	
10	CONE BEARING TIMKEN #26886		5-419-127	
11	CUP, BEARING RACE TIMKEN #26822		5-419-125	
12	CONE, BEARING TIMKEN #26885		5-419-126	
13	LOCKNUT		7-701-001	
14	LOCKWASHER		7-807-001	
15	DUST CAP		5-469-020	
16	SEAL C/R #16284		5-439-141	
17	CONE BEARING TIMKEN JL #69349		5-419-142	
18	CUP, BEARING RACE TIMKEN JL #69310		5-419-141	
19	HUB WITHOUT BEARINGS Q-888 HUB ONLY		5-619-022	
	WITH BEARINGS Q-888 HUB ASSY		5-619-021	
20	CUP, BEARING RACE TIMKEN LM #67010		5-419-112	
21	CONE BEARING TIMKEN LM #67048 67049A		5-419-113	
22	7/8" FLAT WASHER		7-815-025	
23	7/8"-14 NF LIGHT SLOTTED NUT		7-715-875	
24	COTTER PIN 1/8 X 1-3/4		7-910-155	
25	DUST CAP		5-469-006	
26	LUG BOLT, 1-20NF X 1		7-333-006	

* TANDEM WHEEL LEG ASSEMBLIES ARE OPTIONAL ON 11' CHISEL PLOWS. THE OUTER WINGS ON 22' AND 25' CHISEL PLOWS ARE OPTIONAL ALSO.

WHEEL LEG ASSEMBLY
PARTS BREAKDOWN



* SINGLE WHEEL LEG
MATERIAL LISTING
1600 SERIES CHISEL PLOW
22, 25 AND 29 FT.

REF. NO.	DESCRIPTION	22 FT	25 FT	29 FT
		8 FT CNTR 7 FT WING	11 FT CNTR 7 FT WING	11 FT CNTR 9 FT WING
1	A) WHEEL LEG, CENTER FRAME FOR USE WITH SINGLE WHEELS			
	LEG ONLY LT	420-049	420-047	
	RT	420-050	420-048	
	ASSEMBLED W/6 BOLT HUB LT	420-340	420-332	
	RT	420-345	420-333	
	B) WHEEL LEG, WING FRAME FOR USE WITH SINGLE WHEELS			
	LEG ONLY LT		420-047	
	RT		420-048	
	ASSEMBLED W/6 BOLT HUB LT		420-332	
	RT		420-333	
2	HUB WITHOUT BEARINGS Q-888 HUB ONLY		5-619-022	
	WITH BEARINGS Q-888 HUB ASSY		5-619-021	
3	SPINDLE (F/WHEEL LEG)	5-629-001	5-628-018	
4	RIM 15 X 10 F/6-BOLT HUB		5-634-585	
	RIM 15 X 8 F/6-BOLT HUB		5-639-421	
5	TIRE 9.5L X 15, 6 PLY RIB IMPL. F/WING WHEEL LEGS		5-649-060	
	9.5L X 15, 8 PLY RIB IMPL. F/CNTR WHEEL LEGS		5-649-062	
	11L X 15, 6 PLY RIB IMPL. F/WING WHEEL LEGS		5-649-504	
	11L X 15, 8 PLY RIB IMPL. F/CNTR WHEEL LEGS		5-649-503	
	12L X 15, 8 PLY RIB IMPL. F/WING/CNTR		5-649-035	
5A	TIRE MOUNTED ON RIM (5-639-421) 9.5L X 15, 6 PLY RIB IMPL. F/WING WHEEL LEGS		5-639-583	
	9.5L X 15, 8 PLY RIB IMPL. F/CNTR WHEEL LEGS		5-639-584	
	11L X 15, 6 PLY RIB IMPL. F/WING WHEEL LEGS		5-639-588	
	11L X 15, 8 PLY RIB IMPL. F/CNTR WHEEL LEGS		5-639-589	
	12L X 15, 8 PLY RIB IMPL. F/WING AND CNTR.		5-639-035	
6	CAPSCREW 5/8 X 5 NCCS GRADE 5 (F/WHEEL LEG)		7-114-050	
	LOCKWASHER 5/8 MED.		7-844-020	
	NUT, HEX 5/8 NC		7-724-005	
7	SEAL C/R #16284		5-439-141	
8	CONE BEARING TIMKEN JL #69349		5-419-142	
9	CUP, BEARING RACE TIMKEN JL #69310		5-419-141	
10	CUP, BEARING RACE TIMKEN LM #67010		5-419-112	
11	CONE BEARING TIMKEN LM #67048		5-419-113	
12	7/8" FLAT WASHER		7-815-025	
13	7/8"-14 NF LIGHT SLOTTED NUT		7-715-875	
14	DUST CAP		5-469-006	
15	LUG BOLT 1/2-20NF X 1		7-333-006	
16	COTTER PIN 1/8 X 1-3/4		7-910-155	

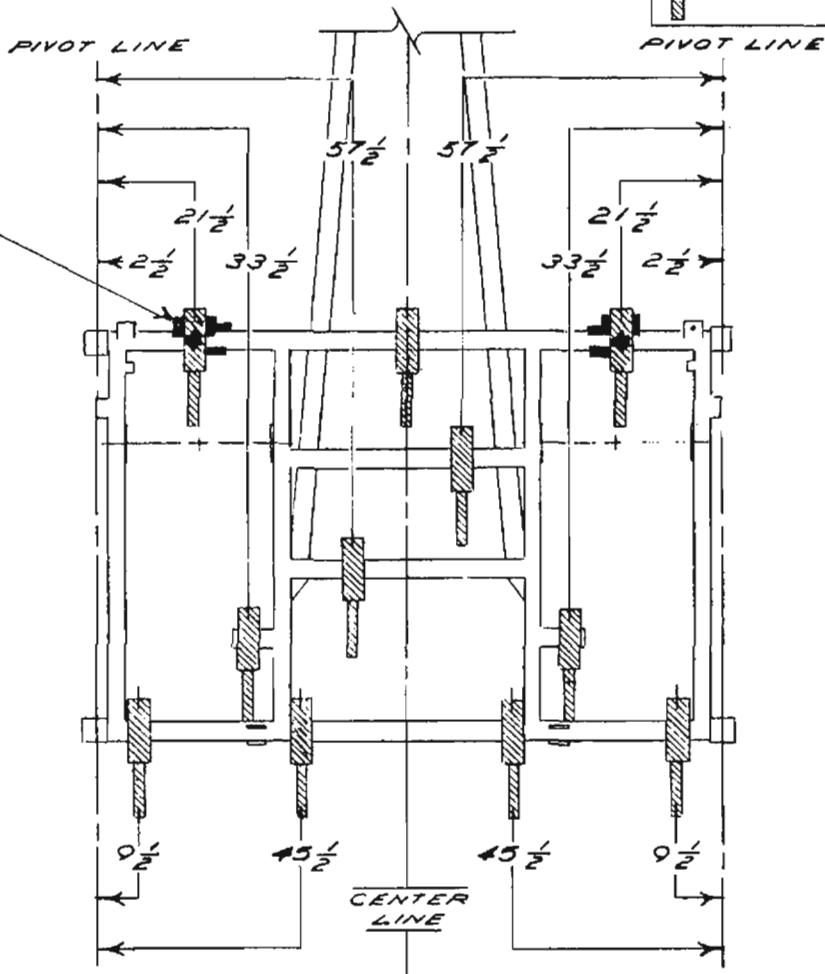
* SINGLE WHEEL LEG ASSEMBLIES ARE STANDARD EQUIPMENT ON 11' CHISEL PLOWS. THE NUMBERS ARE 420-332 LH AND 420-333 RH. THEY ARE SAME AS 11' CENTERS ON 25' & 29' CHISEL PLOWS.

SHANK LAYOUT
1600 SERIES CHISEL PLOW
11 FOOT



INDICATES SPECIAL
SWEEP REQD. WHEN
UTILIZING TANDEM
WHEELS.

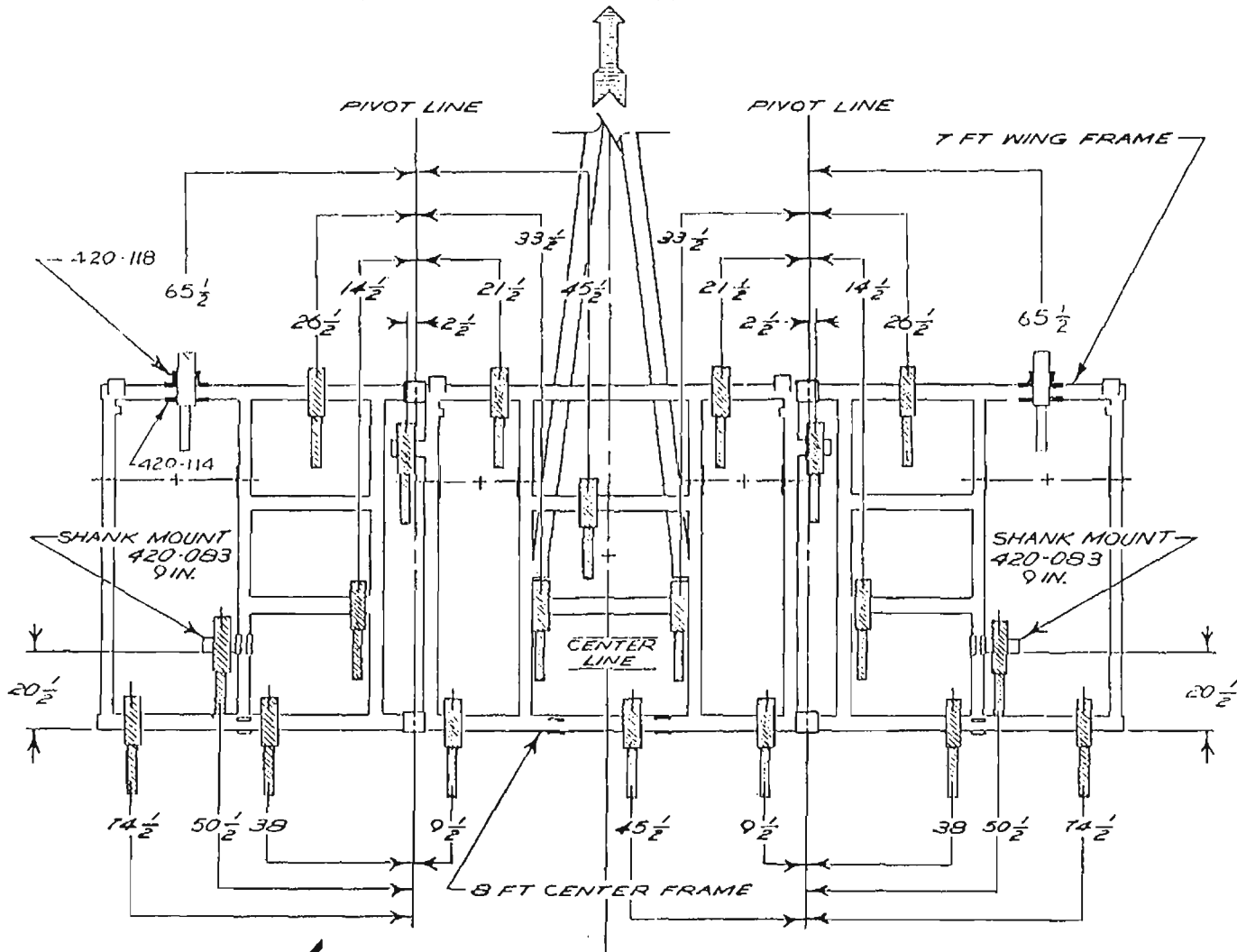
420-118



GALKINS MANUFACTURING COMPANY
SPOKANE INDUSTRIAL PARK, BLDG. 15, SPOKANE, WA 99214
PHONE (509) 926-7420

FORM: 0289-18m

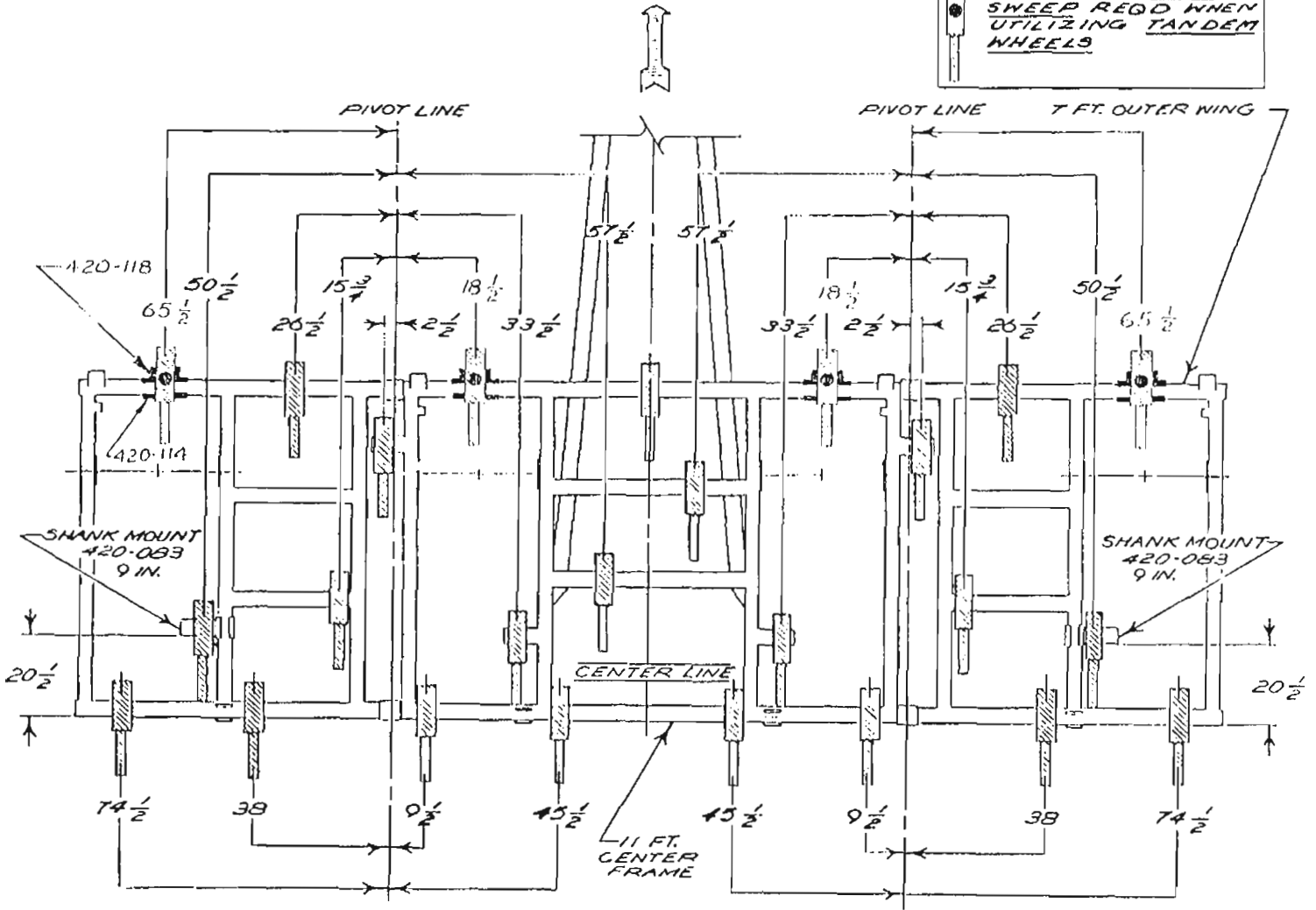
**SHANK LAYOUT
1600 SERIES CHISEL PLOW
22 FT.**



CALKINS MANUFACTURING COMPANY
SPOKANE INDUSTRIAL PARK, BLDG. 16, SPOKANE, WA 99214
PHONE (509) 928-7420

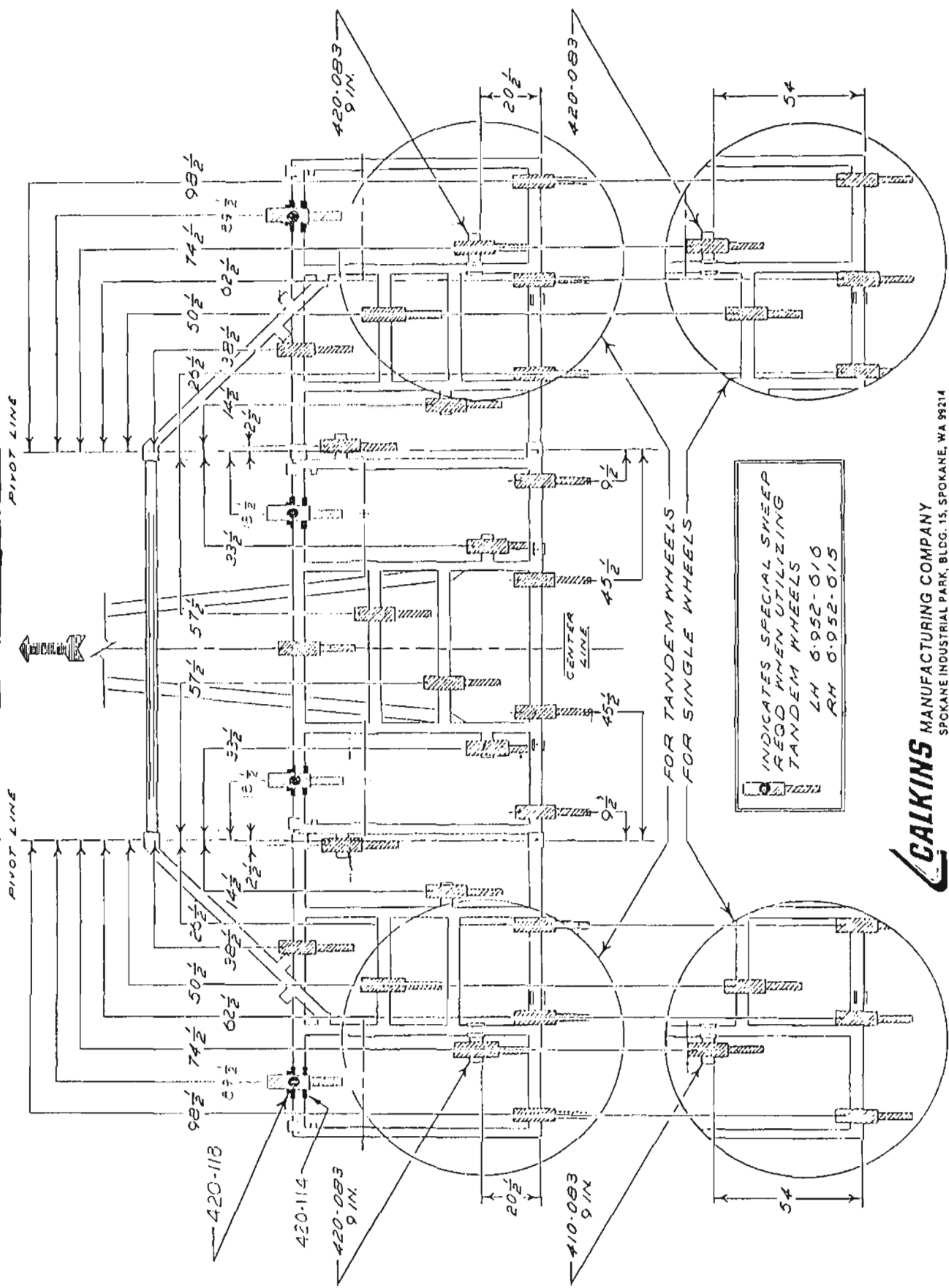
**SHANK LAYOUT
1600 SERIES CHISEL PLOW
28 FT.**

INDICATES SPECIAL
SWEEP REQD WHEN
UTILIZING TANDEM
WHEELS



CALKINS MANUFACTURING COMPANY
SPOKANE INDUSTRIAL PARK, BLDG. 16, SPOKANE, WA 99214
PHONE (509) 926-7420

**SHANK LAYOUT
1600 SERIES CHISEL PLOW
29 FT.**



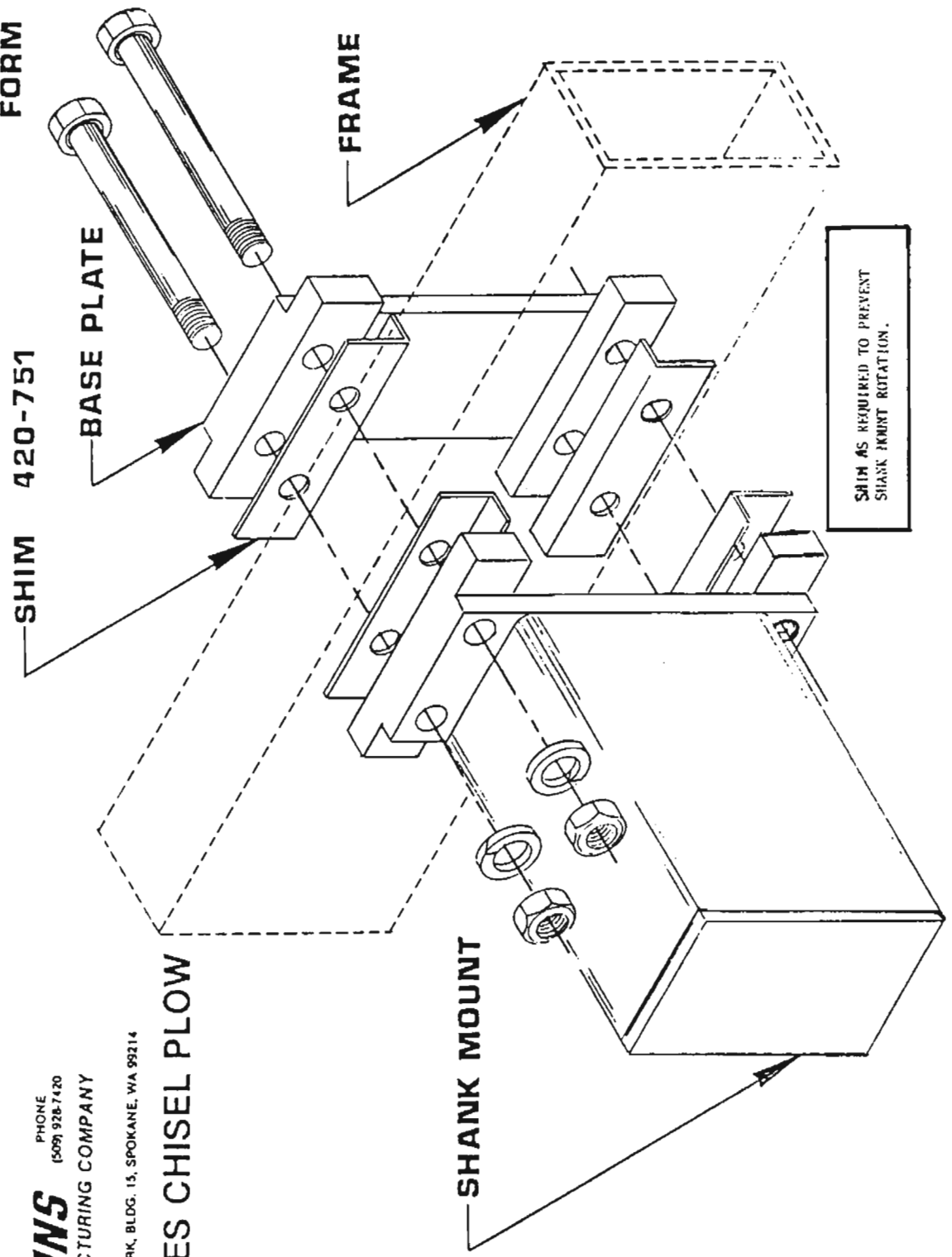
INDICATES SPECIAL SWEEP
LEGS WHEN UTILIZING
TANDEM WHEELS
LH 6:952-010
RH 6:952-015

CALKINS MANUFACTURING COMPANY
SPOKANE INDUSTRIAL PARK, BLDG. 15, SPOKANE, WA 99214
PHONE (509) 926-7420

FORM 0284-10

GALKINS PHONE
(509) 928-7420
MANUFACTURING COMPANY
SPOKANE INDUSTRIAL PARK, BLDG. 13, SPOKANE, WA 99214

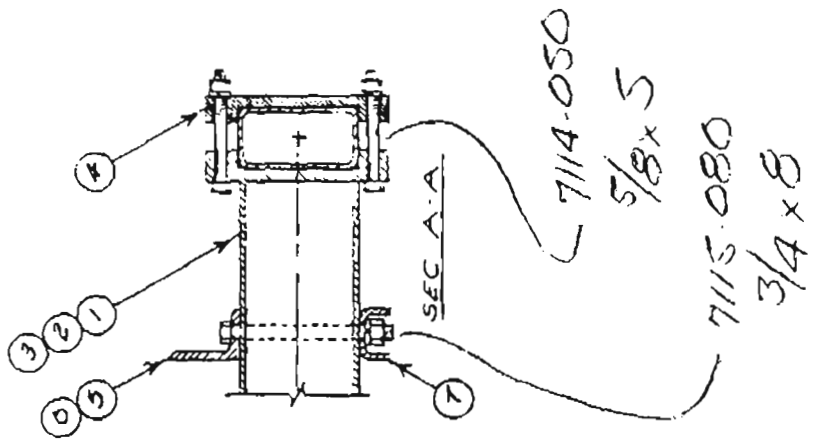
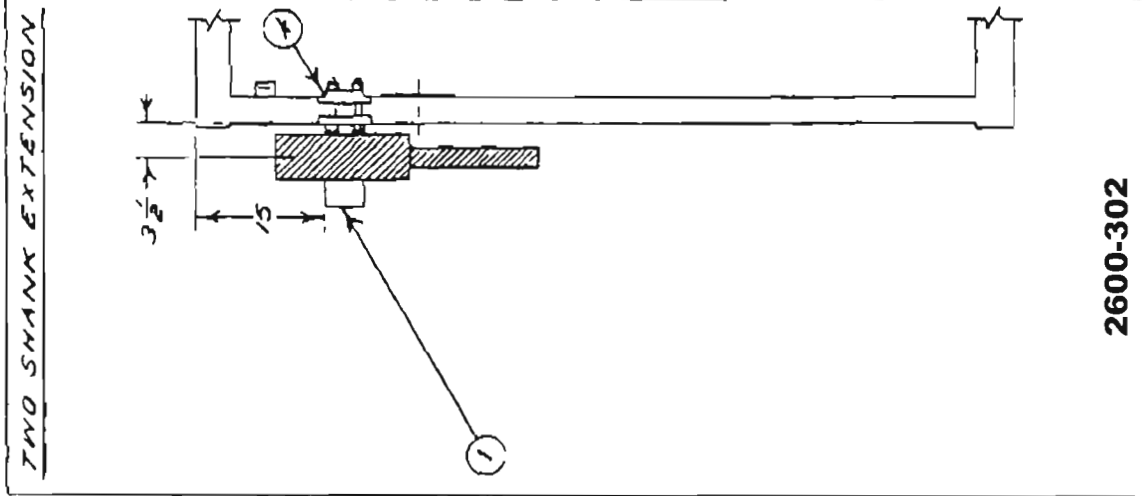
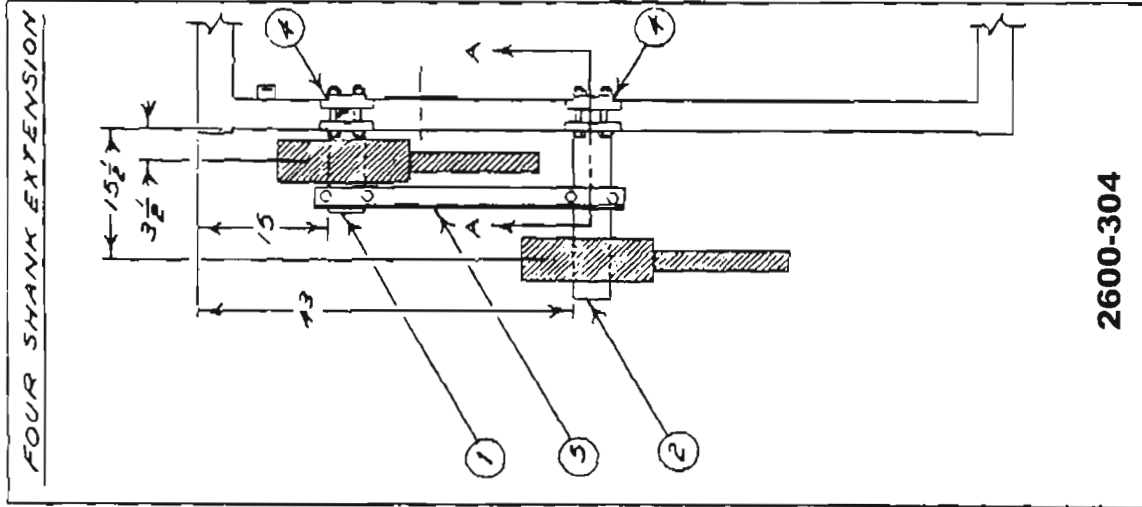
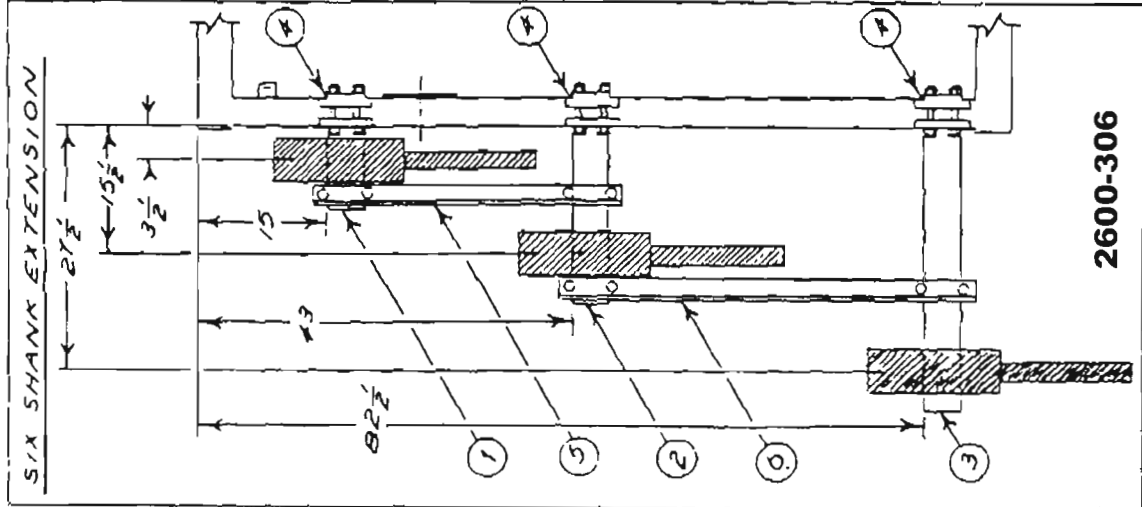
1600 SERIES CHISEL PLOW



SHANK MOUNT SHIM INSTALLATION

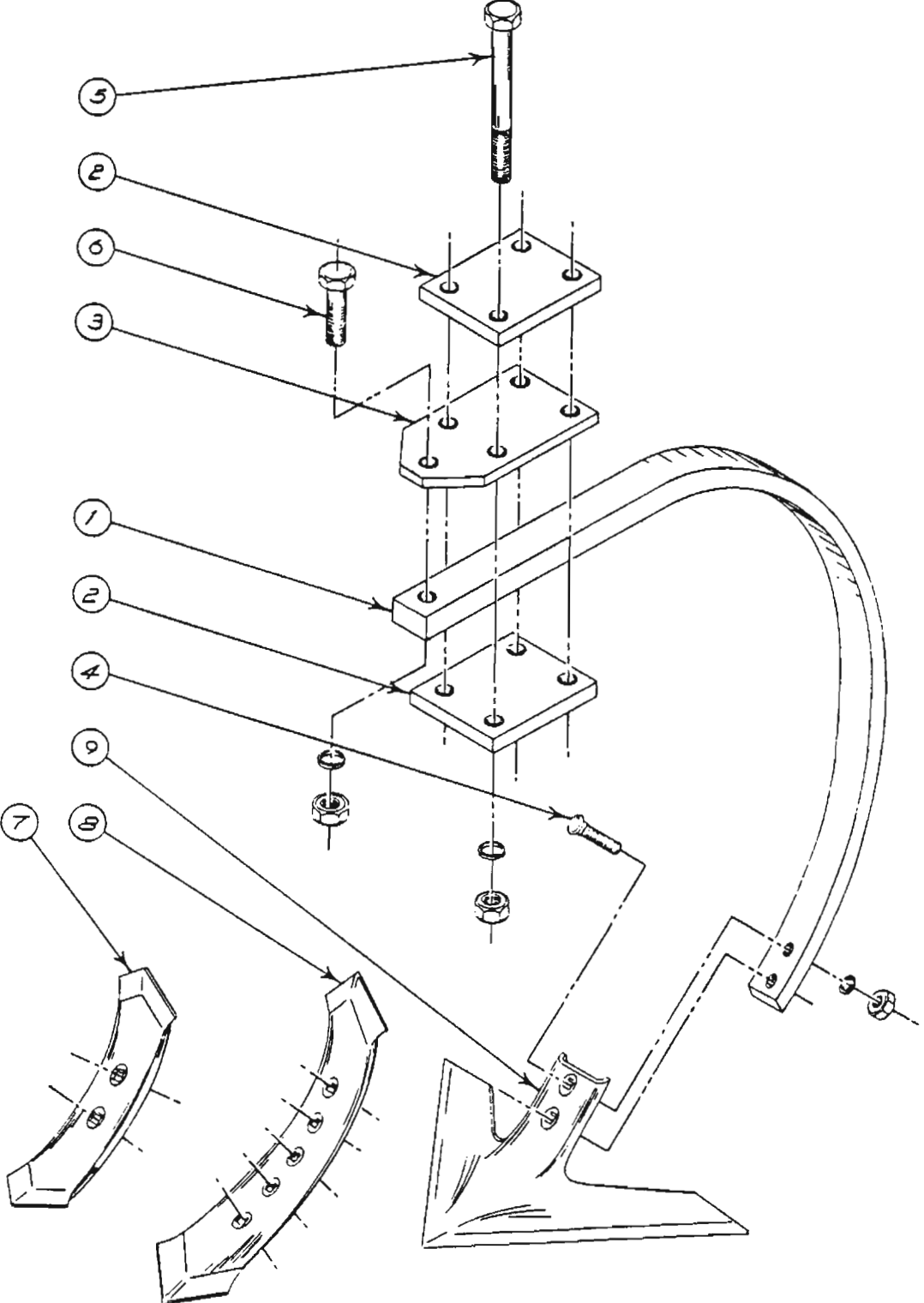
**WING EXTENSION KITS
12 IN. SPACING
1600 SERIES CHISEL PLOW**

CALKINS MANUFACTURING COMPANY
SPOKANE INDUSTRIAL PARK, BLDG. 15, SPOKANE, WA 99214
PHONE (509) 928-7420



REF. NO.	DESCRIPTION	PART NO.
1	SHANK MOUNT 9"	420-083
2	SHANK MOUNT 23 1/2"	420-085
3	SHANK MOUNT 32 1/2"	420-080
4	BASE PLATE	420-082
5	MOUNT SUPPORT	420-202
6	MOUNT SUPPORT	420-204
7	CLAMP	200-031

**SHANK ASSEMBLY
(STIFF)
1600 SERIES CHISEL PLOW**



MANUFACTURING COMPANY
SPOKANE INDUSTRIAL PARK, BLDG. 15, SPOKANE, WA 99214

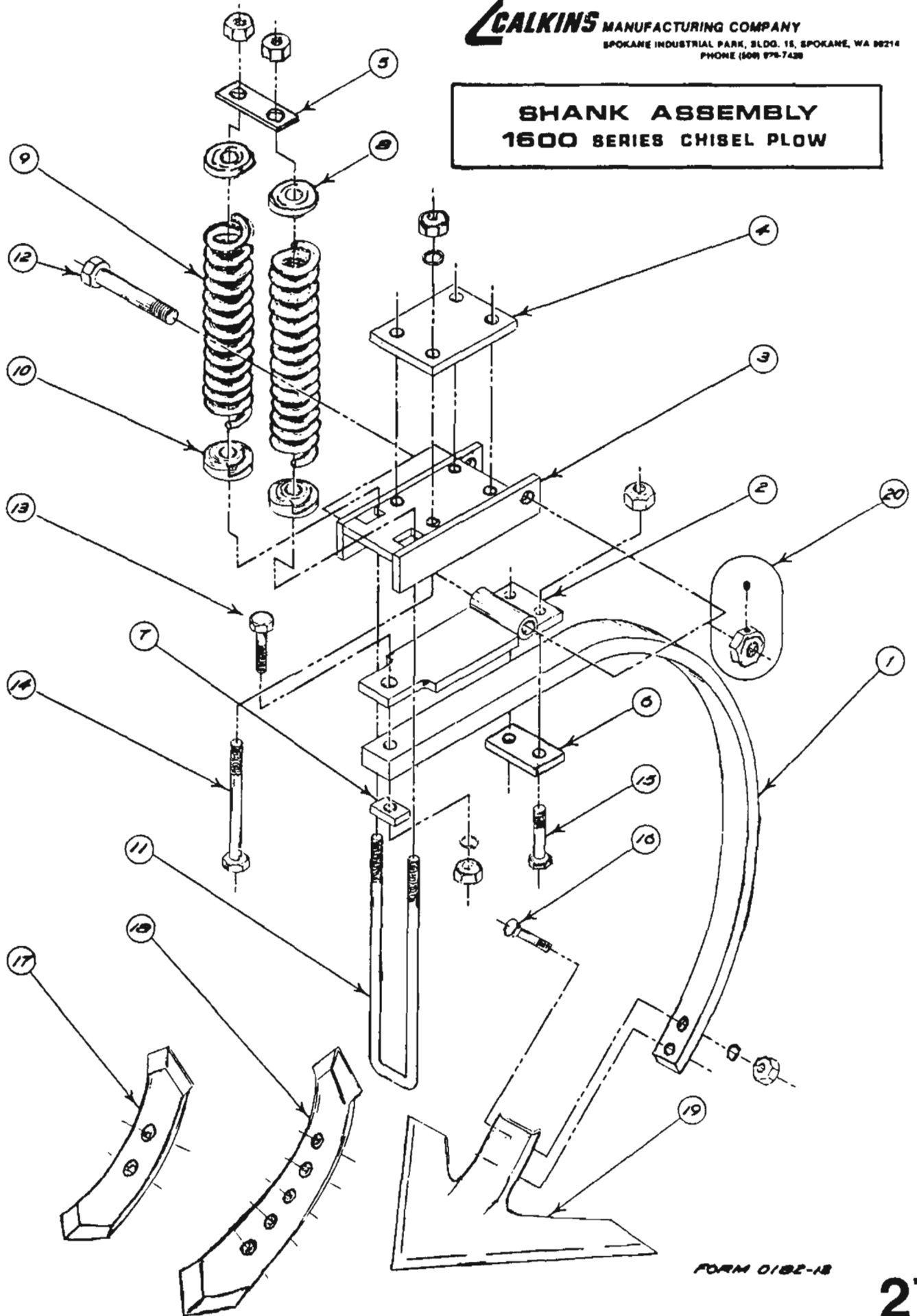
FORM 1080-15

SHANK ASSEMBLY
(STIFF)
1600 SERIES CHISEL PLOW

MATERIAL LISTING

REF. NO.	ITEM DESCRIPTION	PART NO.
	26" CHISEL SHANK ASSEMBLY	420-352
	32" CHISEL SHANK ASSEMBLY	420-353
1	26" SHANK	5-939-001
	32" SHANK	5-939-002
2	MOUNT PLATE	420-289
3	SHANK MOUNT PLATE	420-087
4	PLOW BOLT, 1/2 x 2 1/2 NC	7-273-001
	LOCKWASHER, 1/2 MEDIUM	7-843-015
	NUT, 1/2 NC HEX	7-723-001
5	CAPSCREW, 3/4-10 NC X 10	7-115-099
	LOCKWASHER, 3/4 MEDIUM	7-845-020
	NUT, 3/4-10 NC	7-725-001
6	CAPSCREW, 3/4-10 NC X 3	7-115-030
	LOCKWASHER, 3/4 MEDIUM	7-845-020
	NUT, 3/4-10 NC	7-725-001
7	REVERSIBLE POINT, 2" X 5/8" X 16"	5-952-609
8	TWISTED POINT 3" X 1/2" X 22"	
	LH	5-952-613
	RH	5-952-612
9	SWEEP, 5/16 X 16" HD	5-952-614
	MODIFIED LH	6-952-616
	MODIFIED RH	6-952-615
	SWEEP, 1/4 X 16	6-952-611
	MODIFIED LH	6-952-617
	MODIFIED RH	6-952-618

**SHANK ASSEMBLY
1600 SERIES CHISEL PLOW**



FORM 0182-18

SHANK ASSEMBLY
1600 SERIES CHISEL PLOW

REF. NO.	ITEM DESCRIPTION	PART NO.
	26" CHISEL SHANK ASSEMBLY	420-350
	32" CHISEL SHANK ASSEMBLY	420-355
1	26" SHANK	5-939-001
	32" SHANK	5-939-002
2	SHANK MOUNT HINGE	420-080
3	SHANK ASSEMBLY MOUNT	420-081
4	MOUNT PLATE	420-300
5	SUPPORT PLATE	420-297
6	MOUNT PLATE	420-298
7	SPACE PLATE	420-299
8	TOP SPRING INSERT	5-919-050
9	SPRING	5-113-001
10	BOTTOM SPRING INSERT	5-919-051
11	U-BOLT, 3/4-10 NC x 15-3/4	6-215-001
	NUT, 3/4-10NC HEX	7-725-001
12	CAPSCREW, SPECIAL, 7/8-10NC x 5-5/8	7-115-110
13	CAPSCREW, 3/4-10NC x 3	7-115-030
	LOCKWASHER, 3/4 MEDIUM	7-845-020
	NUT, 3/4-10NC, HEX	7-725-001
14	CAPSCREW, 3/4 x 10NC x 8	7-115-080
	LOCKWASHER, 3/4 MEDIUM	7-845-020
	NUT, 3/4-10NC, HEX	7-725-001
15	CAPSCREW, 5/8-11NC x 3-1/4	7-114-028
	NUT, CONELOCK 5/8-11NC	7-724-110
16	PLOW BOLT, 1/2" -14NC x 2-1/2 - #3	7-273-001
	LOCKWASHER, 1/2 MEDIUM	7-843-015
	NUT, 1/2 -14NC, HEX	7-723-015
17	REVERSIBLE POINT, 2" x 5/8" x 16"	5-952-609
18	TWISTED POINT 3" x 1/2" x 22" LH	5-952-613
	RH	5-952-612
19	SWEEP, 5/16 x 16" HD	5-952-614
	MODIFIED LH	6-952-616
	MODIFIED RH	6-952-615
	SWEEP, 1/4 x 16	6-952-611
	MODIFIED LH	6-952-617
	MODIFIED RH	6-952-618
20	LOCKING NUT W/SS 7/8-9NC HEX	450-511

STD.
5952-635