

J.E. LOVE CO.®

LOVE/ØYJORD SEEDER

J. E. LOVE COMPANY
P. O. BOX 188
GARFIELD, WA 99130
TELEPHONE: (509) 635-1321, FAX: (509) 635-1434

GENERAL SPECIFICATIONS

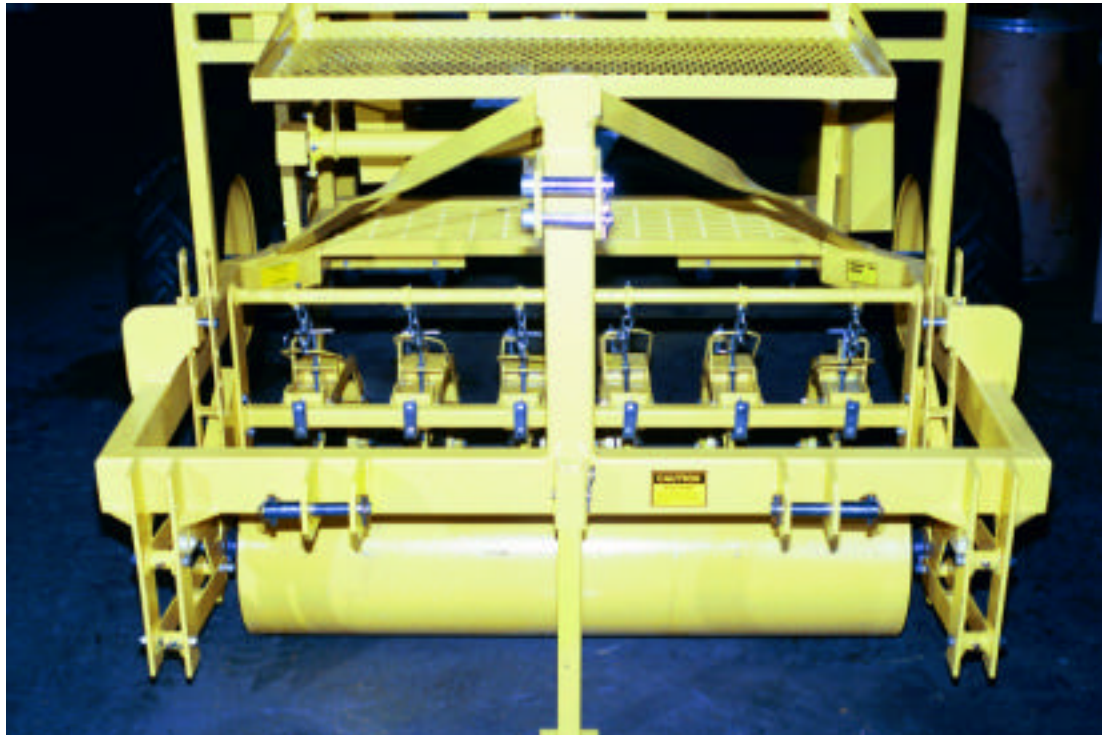
The intent of these specifications is to describe a complete seeding system including continuous full bed sowing utilizing a Bulk Seed Hopper refilling from separate containers, utilizing a Small Batch Funnel for individual seed lots, or the seeding of individual seed lots in bed lengths less than 10 feet with the Feeder Divider package.

The Seeder is to be semi-mounted, three point hitch agricultural seed metering implement. It shall feature a full width front packing roller, individual double disc openers, and trailing packing wheels. The seed metering and distribution system must facilitate ease of calibration and multiple plot sowing.

The Seeder shall be designed for use on prepared flat or raised seedbeds with a maximum seedbed height above the tire surface of 6 inches. The tires shall have an adjustable center to center tread width from 60 to 78 inches. The Seeder shall have a minimum center-to-center row spacing of 5 inches and shall operate at ground speeds from 2-1/2 to 4 miles per hour.

FRAME SPECIFICATIONS

- Structural steel tubing and steel flat bar welded joint construction.
- Category I and II 3 point hitch mounts as defined by A.S.A.E.

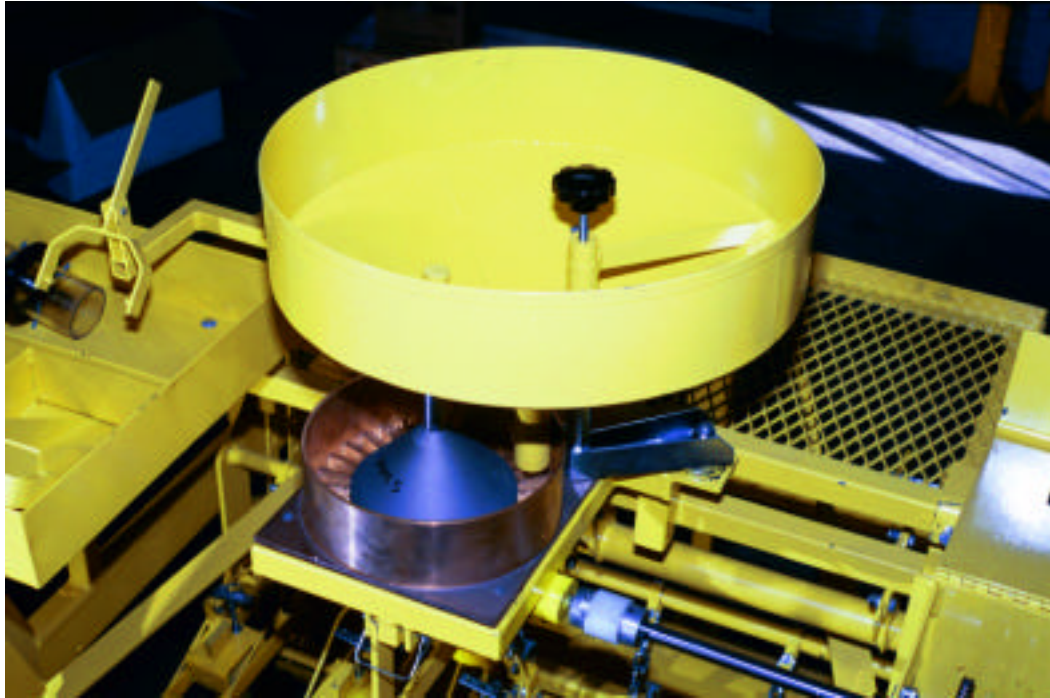


- Bearing mounted, high strength steel axle. 16 x 5.50f wheels mounted on adjustable wheels. 7.50 x 16 4-ply power implement tires.
- Padded low back operator seat, expanded steel decking for good ground

visibility.

SEEDING MECHANISM

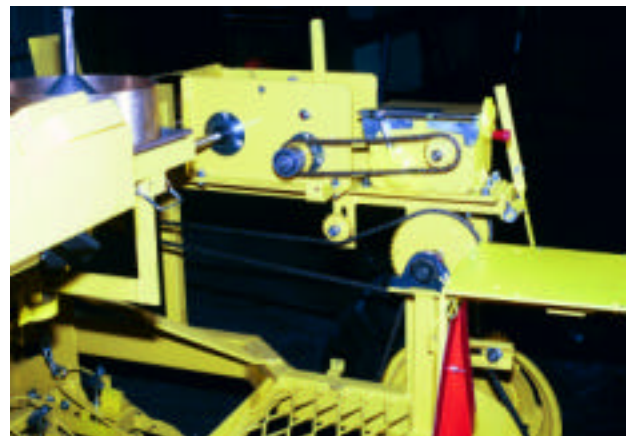
- Multi-element feeder and spinner distribution mechanism with mounts and drive, batch funnel and mounts, bulk seed hopper and mounts, and protective safety cover.



- Steel roller chain ground driven. Hand operated on-off overrunning clutch. Permanently lubricated variable speed drive couples with a three-speed chain transmission to insure accurate seeding rate on short and long beds. Torque overload protective device.
- Heavy-duty V-Belt and roller chain drive interconnected to feeder drive clutch. Spinner to start and stop with the feeder.



- Variable ratio transmission with torque overload protection device.



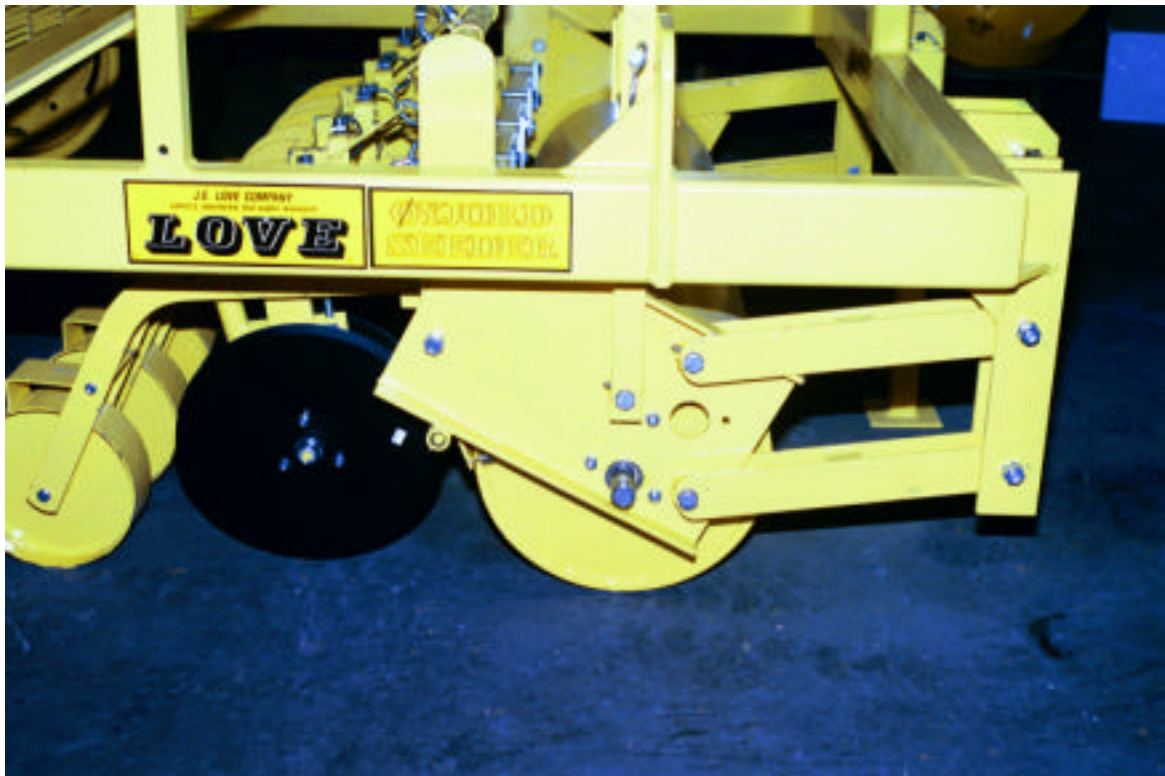
Ground driven heavy-duty chain drive.

- **GROUND CONTACT EQUIPMENT**

- 12-inch diameter front packing roller.

- Concave or flat trailing packing wheels.

- Double disc openers with individual row adjustable depth control. The double disc openers shall bridge between the front packing roller and the individual trailing packer wheels to allow them to follow the ground contour and seed at a uniform depth.



OPTIONAL EQUIPMENT

ORDER AS NECESSARY TO MEET SPECIAL SOWING NEEDS

S12003	FEEDER DIVIDER PACKAGE Bed lengths less than 10 feet
S12018	VERTICAL FLUTED FEEDER, Seed lots with 50,000 or more seeds per pound and low density sowing.
S12024	6 ROW SEED METERING MECHANISM (Use for Laboratory set up to aid calibrations, modify other drills, etc.)
S12025	7 ROW SEED METERING MECHANISM (See S12024)
S12026	8 ROW SEED METERING MECHANISM (See S12024)
S12012	3 ROW CONVERSION for 6 Row Seeder
S12013	3 ROW CONVERSION for 7 Row Seeder
S12014	4 ROW CONVERSION for 6 Row Seeder
S12015	4 ROW CONVERSION for 7 Row Seeder
S12016	3 ROW CONVERSION for 8 Row Seeder
S12017	4 ROW CONVERSION for 8 Row Seeder
S12047	LARGE SEED CONVERSION PACKAGE
S12006	CONCAVE GROUND OPENER ASSEMBLY
S12023	FLAT GROUND OPENER ASSEMBLY

J.E. LOVE CO.

P.O. BOX 188

GARFIELD, WASHINGTON 99130-0188

TELEPHONE: (509) 635-1321

FAX: (509) 635-1434